

LINCOLN COUNTY U.S. PUBLIC LAND SURVEY MONUMENT LOCATION RECORD

SECTION 8
TOWNSHIP 31 N
RANGE 8 E

I-9

NO.

LANDMARK BENCHMARK _____
CORNER IDENTITY: SOUTHEAST CORNER SECTION 8 (SNM-1 NAIL)
FOUND SET
RE-SET RE-TIED

LINCOLN COUNTY COORDINATE: N: 121506.7170
E: 439226.6970

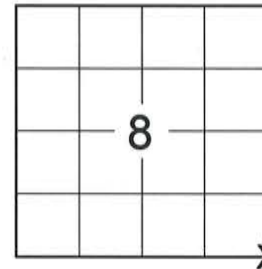
ELEVATION-(FEET): _____ DATUM: _____

WEATHER: CLEAR AND SUNNY

DATE OF SURVEY: 9/12/2014 TEMPERATURE: 65 °F

SURVEY PARTY: KEITH WALKOWSKI AND CHRIS FIERI

PINE RIVER
CITY, VILLAGE, TOWN
SECTION



LOCATION
(Indicated By)



BASIS FOR MONUMENT LOCATION:

(DESCRIBE METHOD OF SURVEY AND CORNER AUTHENTICATION)

10/25/1995 - E. Abendroth found no original evidence of the corner. He did not dig because the corner is located in a large fill area of State Highway "64". He used State of Wisconsin Division Job No. 7068 which stated that the centerline was located 0 feet North of section line. Used centerline of intersecting highways and stationing to re-establish the corner. Set witness monuments to perpetuate the corner location.

9/15/2014 - I visited the corner location prior to the resurfacing of Highway "64" and recovered a P.K. Nail. Also recovered all four (4) witness monuments from the previous corner restoration form. Distances checked well. Set four (4) Berntsen SDR-130 witness monuments and returned after construction to set a Berntsen SNM-1 Nail at the corner location.

CERTIFIED CORRECT:

Christopher L. Fieri
CHRISTOPHER L. FIERI S-2954
Registered Land Surveyor
DATE: 11-20-2014

FIELD BOOK NO. 41 PAGE NO. 18

COMPANY RIVERSIDE LAND SURVEYING LLC

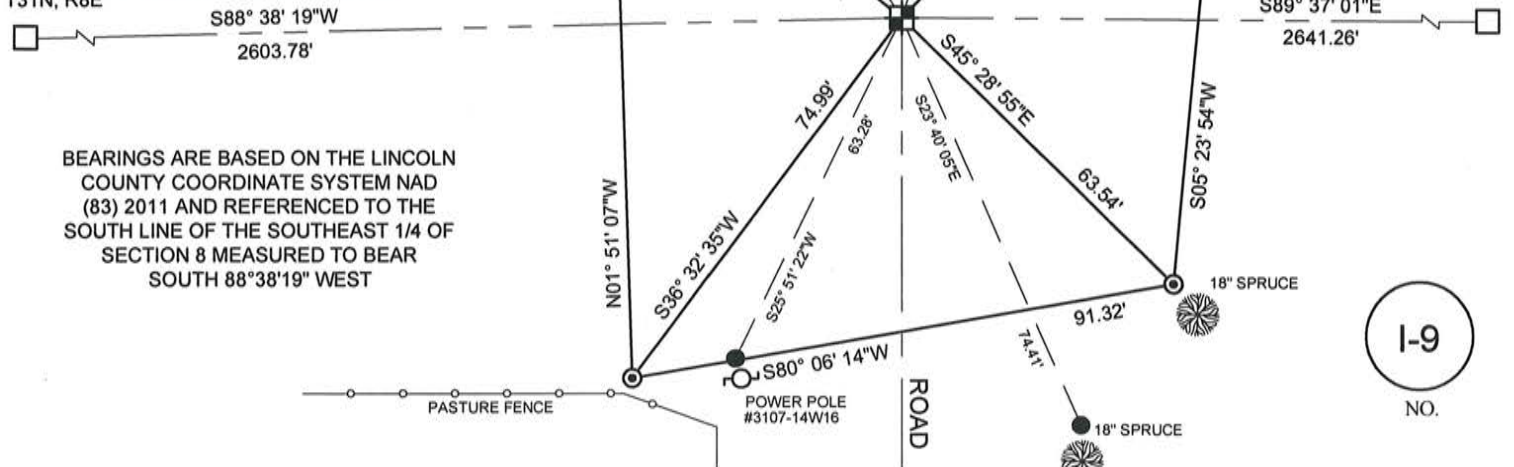
TIE SKETCH:

- BERNTSEN SNM-1 NAIL SET
- BERNTSEN SDR-130 MONUMENT SET
- 7/8" REBAR WITH LINCOLN COUNTY CAP FOUND
- VINYL T-POST SET

RECEIVED BY LINCOLN COUNTY
SURVEYOR THIS 4TH DAY
OF December, 20 14
Tom Dalt
COUNTY SURVEYOR STATE

S1/4 COR.
SECTION 8
T31N, R8E

S1/4 COR.
SECTION 9
T31N, R8E



BEARINGS ARE BASED ON THE LINCOLN COUNTY COORDINATE SYSTEM NAD (83) 2011 AND REFERENCED TO THE SOUTH LINE OF THE SOUTHEAST 1/4 OF SECTION 8 MEASURED TO BEAR SOUTH 88°38'19" WEST

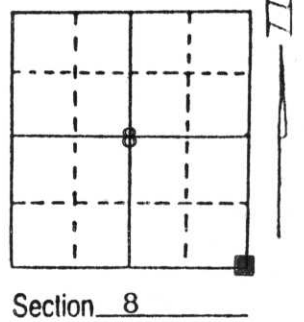
I-9

NO.

U.S. PUBLIC LAND SURVEY MONUMENT RECORD

Note: This form is intended and designed to fulfill all requirements of Wisconsin Administrative Code, Chapter A-E 5.02, U.S. Public Land Survey Monument Record (3) (a) (b) (c) (d) (e) (f) (g) (h) (i). An additional sheet may be added if necessary to conform with said requirements.

(a) Corner location: Township 31 North
 Range 8 East
 Town/City/Village PINE RIVER
 County LINCOLN

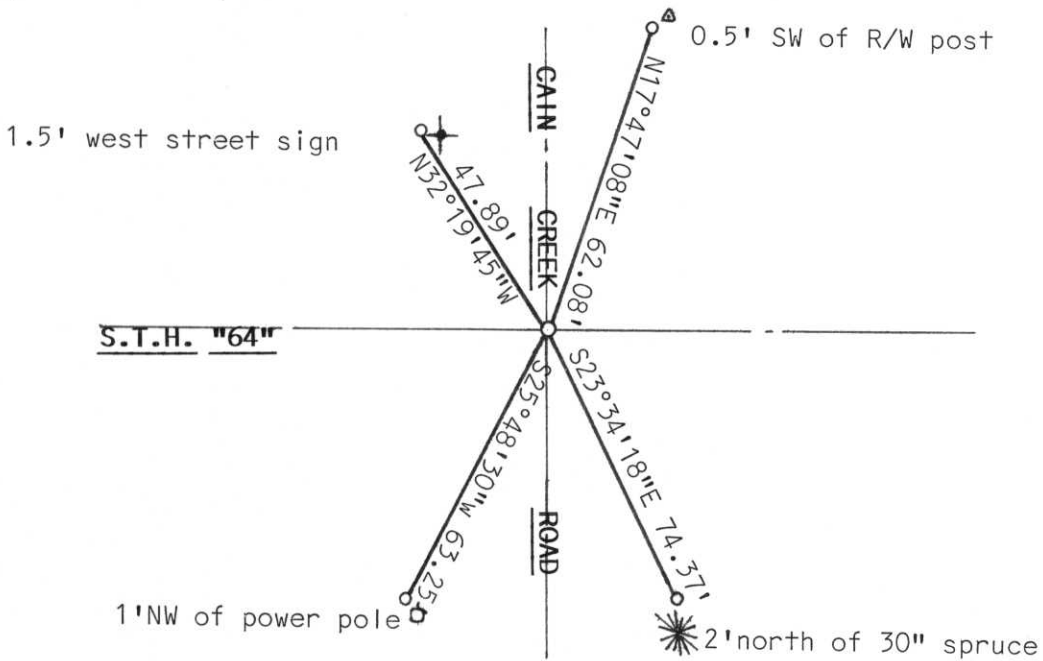


(b) (f) (g) (h) Description of monument found at this corner and if it was accepted, state all evidence (material, testimonial, occupational, plats, records, other monuments) used as a basis for accepting. If not accepted or if nothing was found, state evidence used as basis for establishing location. If reestablished through lost corner proportionate methods, indicate all monuments, distances and directions used to establish.

Original corner set was a wood post with bearing trees. Found no original evidence. Corner located in large fill area did not dig in State Hwy 64. Used State of Wisconsin Division Job NO. 7068. Which stated centerline located 0 feet north of Section line to establish corner location from stationing and centerline of intersecting highways.

**RECEIVED AT LINCOLN COUNTY
 COURTHOUSE THIS 26 DAY
 OF Oct 1995
[Signature]
TAX DESCRIPTION OFFICE**

(c) (d) (e) Plan view of corner with ties to at least 4 witness monuments. If in disagreement with previously established corner, show the distances between the two corners and also indicate the ties to the disputed corner.



(i) I, Edwin R. Abendroth
 (type or print name) certify that the corner location on this record was determined by me or under my direction and control and that this U.S. Public Land Survey Monument Record is correct and complete to the best of my knowledge and belief.



Index No. I-9

Edwin R. Abendroth October 25, 1995
 Signature Date





SEAN BERRY

DEAD
END

HOUSE
FOR SALE





