

LINCOLN COUNTY U.S. PUBLIC LAND SURVEY MONUMENT LOCATION RECORD

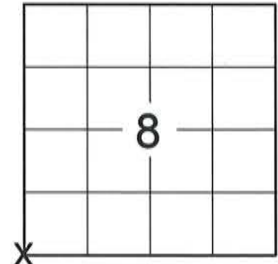
SECTION 8
TOWNSHIP 31 N
RANGE 8 E

1-5
NO.

LANDMARK BENCHMARK
CORNER IDENTITY: SOUTHWEST CORNER SECTION 8 (SNM-1 NAIL)
FOUND SET
RE-SET RE-TIED

PINE RIVER
CITY, VILLAGE, TOWN
SECTION

LINCOLN COUNTY COORDINATE: N: 121480.7590
E: 434005.8090



WEATHER: CLEAR AND SUNNY
DATE OF SURVEY: 9/12/2014 TEMPERATURE: 65 °F
SURVEY PARTY: KEITH WALKOWSKI AND CHRIS FIERI

BASIS FOR MONUMENT LOCATION:
(DESCRIBE METHOD OF SURVEY AND CORNER AUTHENTICATION)



2/1852 - A.G. & F.S. Ellis established the original corner.

11/13/2002 - Craig Keach re-established the corner with the use of Department of Transportation Right-of-Way Plat #7069 dated June of 1939. The Plat shows a stone monument ±10 feet South of the center line of the highway opposite fence lines North and South. He used a fence line to the North and set a 3" Survey Nail 10 feet South of the centerline of Highway "64". Set witness monuments to perpetuate the corner location.

6/6/2012 - A. Dallman PLS - 2405 visited the corner and found three (3) existing witness monuments and a nail hole with the bottom of a Berntsen Survey Marker Nail. The Northeast witness monument had been hit and pulled out and the Southwest reference monument had no tie bearing or distance to it. Shaft of Nail fit the two other existing witness monuments. He retied the corner as stated on his attachment to tie sheet I-5.

9/15/2014 - I visited the corner location prior to the resurfacing of Highway "64" and recovered the shaft of the Berntsen Survey Marker Nail of record. Also recovered all four (4) witness monuments from the previous corner restoration form. Distances checked well. Set four (4) Berntsen SDDR-130 witness monuments and returned after construction to set a Berntsen SNM-1 Nail at the corner location.

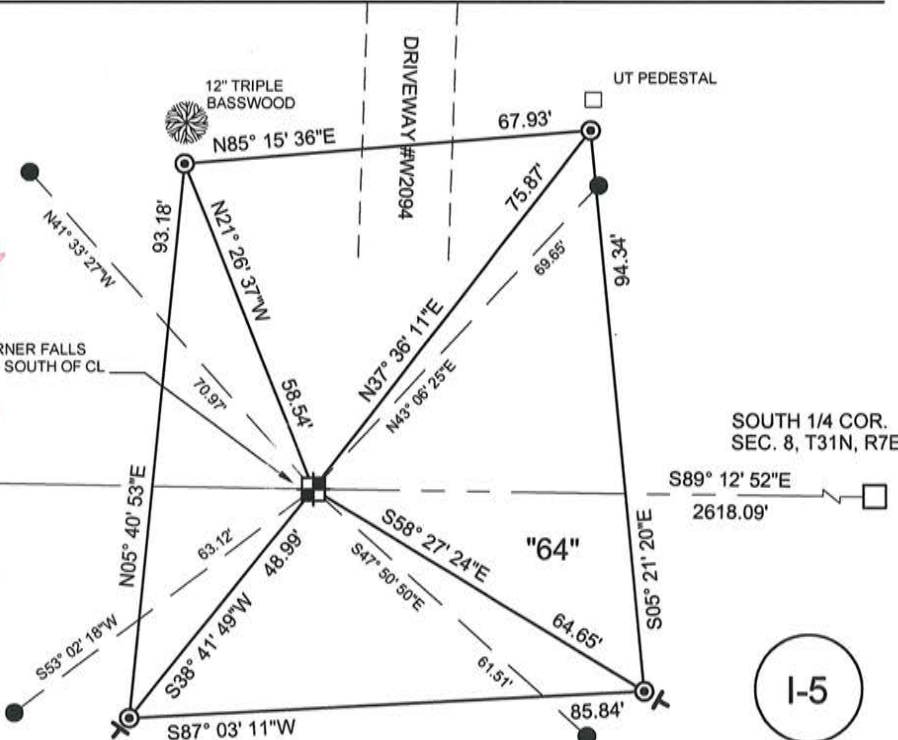
CERTIFIED CORRECT:
Christopher L. Fieri
CHRISTOPHER L. FIERI S-2954
Registered Land Surveyor
DATE: 11-18-2014

TIE SKETCH:

- BERNTSEN SNM-1 NAIL SET
- BERNTSEN SDDR-130 MONUMENT SET
- 7/8" REBAR WITH LINCOLN COUNTY CAP FOUND
- VINYL T-POST SET

RECEIVED BY LINCOLN COUNTY
SURVEYOR THIS 4TH DAY
OF December, 2014
Tony Datta
COUNTY SURVEYOR

SOUTH 1/4 COR.
SEC. 7, T31N, R8E





SOUTH 1/4 COR.
SEC. 8, T31N, R7E

BEARINGS ARE BASED ON THE LINCOLN COUNTY COORDINATE SYSTEM NAD (83) 2011 AND REFERENCED TO THE SOUTH LINE OF THE SOUTHWEST 1/4 OF SECTION 8 MEASURED TO BEAR SOUTH 89°12'52" EAST

1-5
NO.

Attachment to Tie Sheet I-5 T31N, R8E

Visited this corner on June 6, 2012 and found 3 Reference Monuments in good condition and a nail hole with the bottom part of the Berntsen Survey Marker Nail, top of pavement had been ground down to level the travel way. The Northeast Reference Monument (R.M. 2) had been hit and pulled out and the Southwest Reference Monument (R.M. 4) had no tie bearing or distance to it. The 2 existing Reference Monuments cross well to the nail and nail hole. Used the nail as the Corner position to reset the Northeast Reference Monument (R.M. 2) per the Tie Sheet and measure a tie bearing and distance to the Southwest Reference Monument (R.M. 4). Bearing and distance to the Southwest Reference Monument (R.M. 4) is; S50°W, 63.13'. Set a white "T" Post near the Southeast Reference Monument. Field Book #5 Page 144.

Anthony Dallman

Lincoln County Surveyor



INSTRUCTIONS: This record shall show the location of the corner and shall include all of the following 8 elements:

U.S. PUBLIC LAND SURVEY MONUMENT RECORD

1. Description of original government survey information:

A.G. & F.S. Ellis (February 1852)

2. List from research any record evidence, monument evidence, occupational evidence and any other material evidence related to subsequent restorations:

June of 1939 Highway Department recovers stone monument in place

3. Describe any material evidence found and/or considered by the surveyor and justification for positioning corner, giving the direction and distance to survey corners which were used as evidence or used for proportioning:

This corner was established with the use of the Department of Transportation Right of Way Plat #7069 dated June of 1939. This Plat shows a stone monument \pm 10 feet south of the computed centerline of the highway opposite fence lines north and south.

I reestablished the corner opposite a fence line to the north and 10 feet south of the computed centerline. (the computed centerline falls 1' south of the actual centerline). My distance to the S1/4 corner of section 7 is 2639.92' versus (GGS of 2640') and to the S1/4 corner of section 8 is 2617.88' versus (GGS of 2612.28') and to the W1/4 corner of section 8 is 2636.71' versus (GGS of 2640').

4. I, CRAIG A. KEACH, certify that the corner location shown on this record was determined by me or under my direction and control and that this U.S. Public Land Monument record is correct and complete to the best of my knowledge and belief.

Craig A. Keach

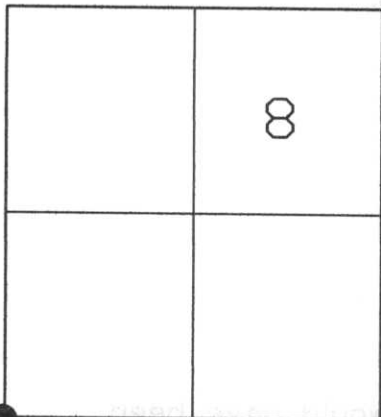
Signature

11/13/02

Date

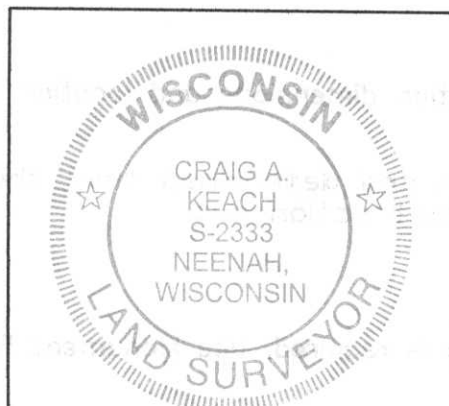
LINCOLN COUNTY

RECEIVED AT LINCOLN COUNTY
COURTHOUSE THIS 15TH DAY
OF November 20 02
Tommy Dallen
LAND INFORMATION OFFICE



SURVEYOR'S STAMP

REGISTER OF DEEDS STAMP



SECTION 8

T. 31 N., R. 8 E.

TOWN
OF PINE RIVER

L-2386

5. Plan view drawing showing a minimum of four reference ties with bearings (indicate bearing reference) and distances to the monument. Identify the reference ties in detail (ex. 7/8" re-bar 2.0' SW of 20" white oak), show improvements and natural features in the immediate vicinity such as roads, fences, buildings, lakes, streams, rock outcrops, etc. and their relation to the corner:

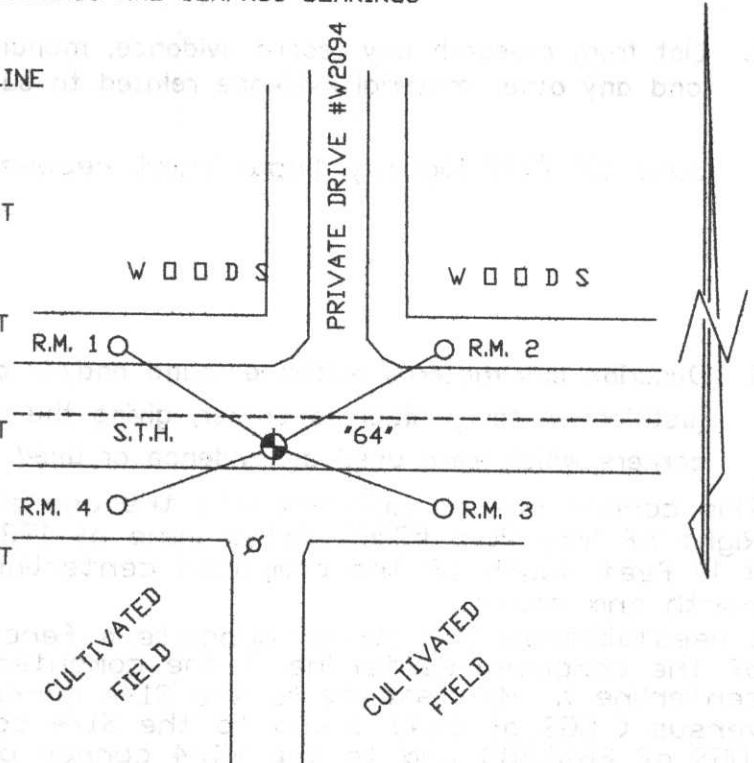
TIE SKETCH

Note: ALL BEARINGS ARE COMPASS BEARINGS

(Show at least four ties)

R.M. Descriptions

- R.M. 1 = 3/4" REBAR WITH WITNESS CAP ±25'
NORTH OF EDGE OF PAVEMENT AND ±63' WEST
OF CENTERLINE OF GRAVEL DRIVE #W2094
N42°W 70.92'
- R.M. 2 = 3/4" REBAR WITH WITNESS CAP ±25'
NORTH OF EDGE OF PAVEMENT AND ±33' EAST
OF CENTERLINE OF GRAVEL DRIVE #W2094
N43°E 69.57'
- R.M. 3 = 3/4" REBAR WITH WITNESS CAP ±36'
SOUTH OF EDGE OF PAVEMENT AND ±53' EAST
OF POWER POLE #3108 18E9
S48°E 61.55'
- R.M. 4 = 3/4" REBAR WITH WITNESS CAP ±33'
SOUTH OF EDGE OF PAVEMENT AND ±37' WEST
OF POWER POLE #3108 18E9



CORNER MONUMENTED WITH
A 3" SURVEY NAIL

WISCONSIN STATE PLANE COORDINATES: N 490365.50
(NAD 83/91) CENTRAL ZONE E 2090265.45

6. Describe any material discrepancy between the location of the corner as restored or re-established and location of that corner as previously restored or re-established:

7. Parol evidence concerning corner location. Give name and address.

STATE OF WISCONSIN
LAND INFORMATION OFFICE
REGISTERED PLAT
REGISTERED DEEDS STAMP

8. If excavated, give excavation dimensions and location.

We searched the area and determined that the corner would have been removed in highway construction cut.

If additional space is required, use Monument Record Continuation Sheet.

21