

# Attachment to Tie Sheet E-5 T31N, R8E

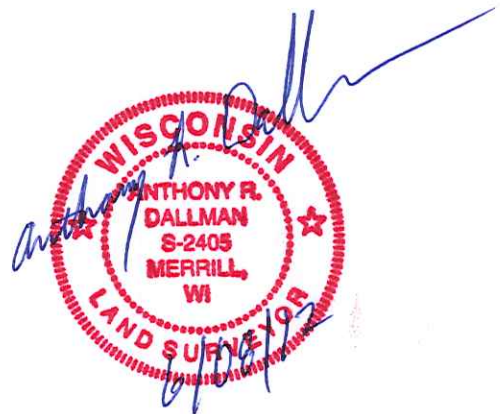
Visited this corner on May 17, 2012 and found the Granite Monument tipped and the Northeast Reference Monument lying on the ground. Reset the Granite Monument down 6" per Tie Sheet, reset the Northeast Reference Monument per the Tie Sheet and set a white "T" Post near the Northwest Reference Monument. Field Book #5 Page 132.

*Anthony Dallman* *6/08/12*

---

Anthony Dallman

Lincoln County Surveyor



# U.S. PUBLIC LAND SURVEY MONUMENT RECORD

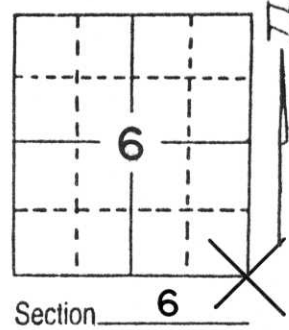
Note: This form is intended and designed to fulfill all requirements of Wisconsin Administrative Code, Chapter A-E 5.02, U.S. Public Land Survey Monument Record (3) (a) (b) (c) (d) (e) (f) (g) (h) (i). An additional sheet may be added if necessary to conform with said requirements.

(a) Corner location: Township 31 North

Range 8 East

Town/City/Village PINE RIVER

County LINCOLN

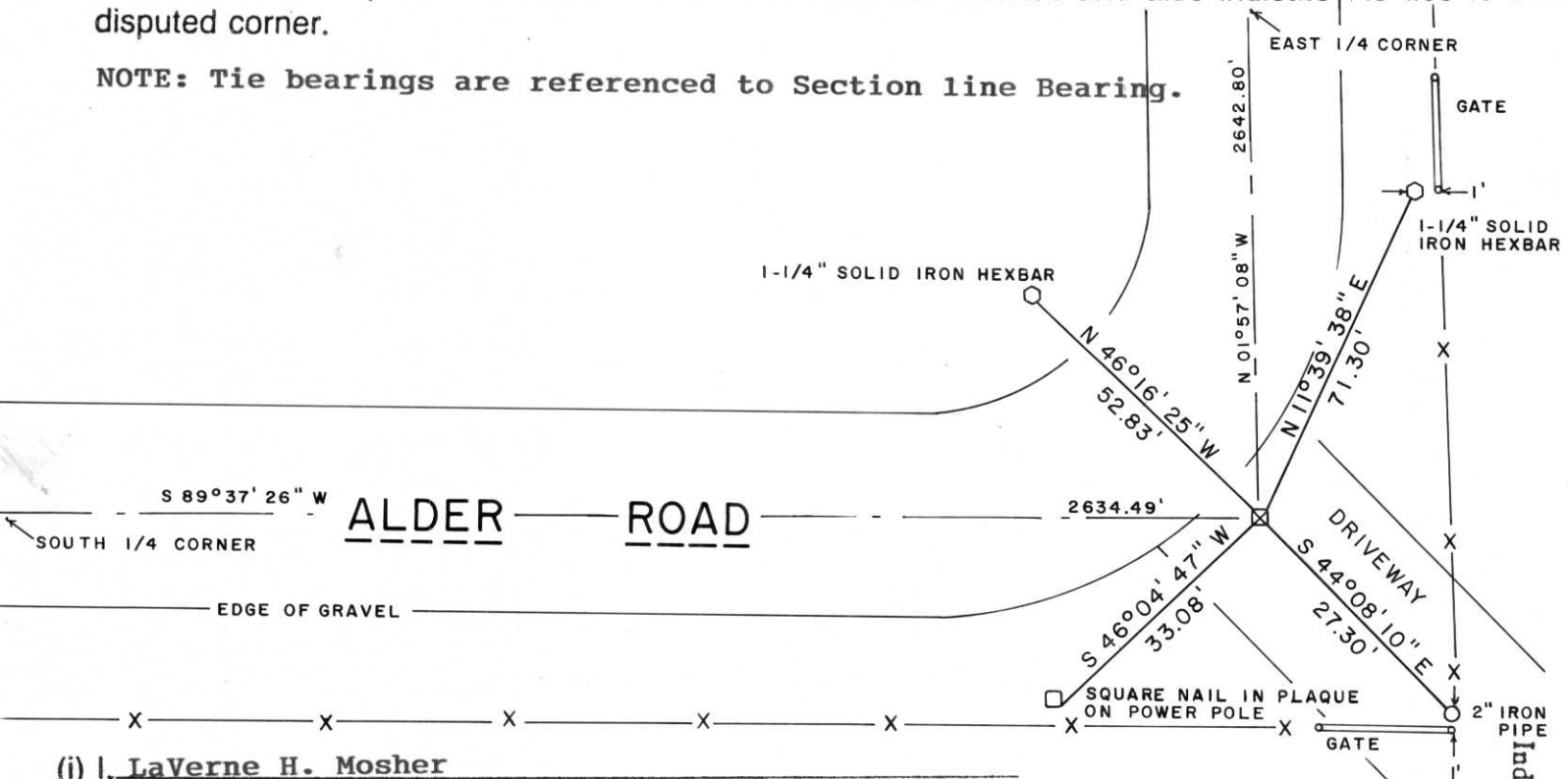


(b) (f) (g) (h) Description of monument found at this corner and if it was accepted, state all evidence (material, testimonial, occupational, plats, records, other monuments) used as a basis for accepting. If not accepted or if nothing was found, state evidence used as basis for establishing location. If reestablished through lost corner proportionate methods, indicate all monuments, distances and directions used to establish.

Excavated with backhoe and recovered a 6" x 6" Red Granite stone monument just below ground surface at road centerline intersection. Top of monument had been broken off but bottom portion is upright, intact and firmly anchored in position. Left stone in place, chiselled new "X" on top center of stone and set a 1" x 24" iron pipe along South face of stone to aid future detection.

(c) (d) (e) Plan view of corner with ties to at least 4 witness monuments. If in disagreement with previously established corner, show the distances between the two corners and also indicate the ties to the disputed corner.

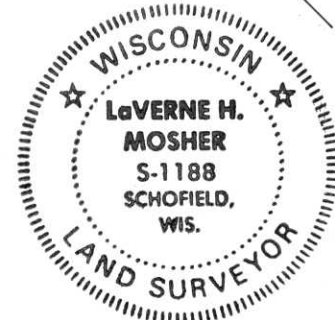
NOTE: Tie bearings are referenced to Section line Bearing.



(i) LaVerne H. Mosher  
 (type or print name) certify that the corner location on this record was determined by me or under my direction and control and that this U.S. Public Land Survey Monument Record is correct and complete to the best of my knowledge and belief.

LaVerne H. Mosher  
 Signature

AUGUST 7, 1992  
 Date



Index No. E-5

















55





