

# Attachment to Tie Sheet C-13, T31N, R8E

I visited corner on 12/10/2012; Book 6, pg. 24. The 6" X 6" Granite Stone Monument previously shown on tie sheet dated 01/03/2006 was found tipped in mud/water hole and susceptible to frost heave.

## NOTES

- I replaced the Stone with 60" long Berntsen Aluminum Swamp Rod w/ Aluminum Cap
- All ties from 2006 tie sheet match and remain the same.
- Granite Stone was laid on its side south of the new Aluminum Rod, by Ash tree.

Anthony R. Dallman 7/28/15

Anthony R. Dallman, PLS-2405

Lincoln County Surveyor



# LINCOLN COUNTY U.S. PUBLIC LAND SURVEY MONUMENT LOCATION RECORD

CORNER NUMBER 33184

SECTION 3

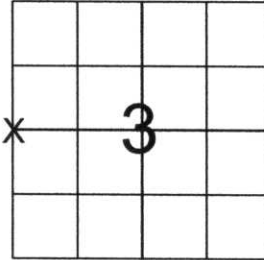
TOWNSHIP 31 NORTH

RANGE 8 EAST

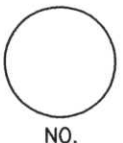
PINE RIVER

CITY, VILLAGE, TOWN

SECTION



LOCATION  
(Indicated By X)



LANDMARK  BENCHMARK  WEST 1/4 CORNER

FOUND  SET   
RESET   
RE-TIED

LINCOLN COUNTY COORDINATE: N: 129397.55  
E: 444569.79

ELEVATION-(FEET): \_\_\_\_\_ DATUM: \_\_\_\_\_

WEATHER: SNOWING

DATE OF SURVEY: 12-15-05 TEMPERATURE: 30 °F

SURVEY PARTY: NATHAN WINCENTSEN, KEITH WALKOWSKI

**BASIS FOR MONUMENT LOCATION:**  
(DESCRIBE METHOD OF SURVEY AND CORNER AUTHENTICATION)

SEARCHED FOR WEST 1/4 CORNER, FOUND LEANING RIPCO 2" IRON PIPE WITH ALUMINUM CAP MARKED 1/4 SEC. 3, CONTINUED SEARCHING AND FOUND GRANITE STONE LEANING IN SWAMP RESET GRANITE STONE AND ACCEPTED AS THE WEST 1/4 CORNER AND PERPETUATED AS SHOWN BELOW.



CERTIFIED CORRECT:  
Keith J. Walkowski  
KEITH J. WALKOWSKI  
Registered Land Surveyor  
DATE: Jan. 3RD, 2006

FIELD BOOK NO. PINE RIVER PAGE NO. 44

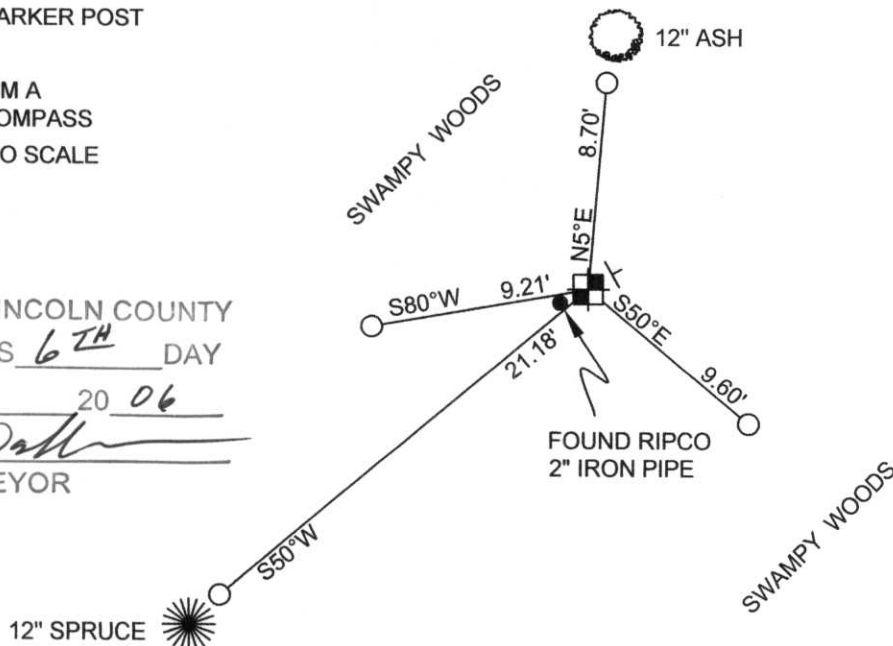
COMPANY RIVERSIDE LAND SURVEYING LLC

**TIE SKETCH:** SHOW MINIMUM OF FOUR (4) HORIZONTAL TIE DISTANCES TO FIXED WITNESS MONUMENTS. DESCRIBE ALL MONUMENTS FOUND OR SET. CORRECT ALL DISTANCES SHOWN TO STANDARD TEMPERATURE OF 68° F.

- FOUND GRANITE STONE
- SET 3/4" REBAR WITH ALUMINUM CAPS
- VINYL SURVEY MARKER POST

**NOTE**

- ALL BEARINGS ARE FROM A HAND HELD MAGNETIC COMPASS
- THIS DRAWING IS NOT TO SCALE



RECEIVED BY LINCOLN COUNTY SURVEYOR THIS 6TH DAY OF January 20 06  
Tommy Dalk  
COUNTY SURVEYOR



33184

