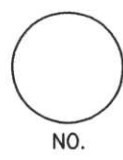
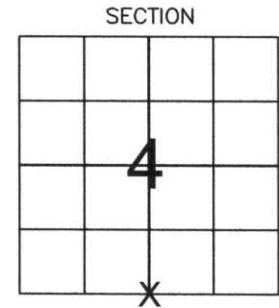


LINCOLN COUNTY U.S. PUBLIC LAND SURVEY MONUMENT LOCATION RECORD

CORNER NUMBER 43187
 SECTION 3
 TOWNSHIP 31 NORTH
 RANGE 8 EAST
PINE RIVER
 CITY, VILLAGE, TOWN



LANDMARK BENCHMARK _____
 CORNER IDENTITY: SOUTH 1/4 CORNER FOUND SET
 LINCOLN COUNTY COORDINATE: N: 126765.65 RESET
 E: 441916.07 RE-TIED
 ELEVATION-(FEET): _____ DATUM: _____
 WEATHER: SNOWING
 DATE OF SURVEY: 12-15-05 TEMPERATURE: 30 °F
 SURVEY PARTY: NATHAN WINCENTSEN, KEITH WALKOWSKI



SECTION
 LOCATION (Indicated By X)



BASIS FOR MONUMENT LOCATION:
 (DESCRIBE METHOD OF SURVEY AND CORNER AUTHENTICATION)

SEARCHED FOR SOUTH 1/4 CORNER, FOUND GRANITE STONE PROTRUDING 0.8 FEET ABOVE GRADE. ACCEPTED STONE AS SOUTH 1/4 CORNER AND PERPETUATED AS SHOWN BELOW.



CERTIFIED CORRECT:
Keith J. Walkowski
KEITH J. WALKOWSKI
 Registered Land Surveyor
 DATE: Jan. 3RD, 2006

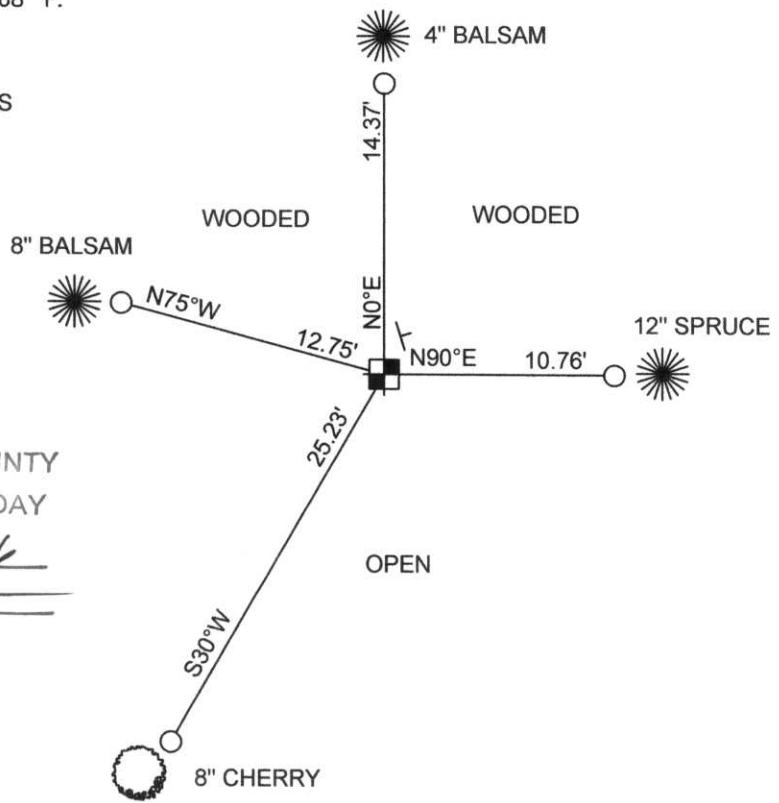
FIELD BOOK NO. PINE RIVER PAGE NO. 45
 COMPANY RIVERSIDE LAND SURVEYING LLC

TIE SKETCH: SHOW MINIMUM OF FOUR (4) HORIZONTAL TIE DISTANCES TO FIXED WITNESS MONUMENTS. DESCRIBE ALL MONUMENTS FOUND OR SET. CORRECT ALL DISTANCES SHOWN TO STANDARD TEMPERATURE OF 68° F.

- FOUND GRANITE STONE
- SET 3/4" REBAR WITH ALUMINUM CAPS
- VINYL SURVEY MARKER POST

NOTE

- ALL BEARINGS ARE FROM A HAND HELD MAGNETIC COMPASS
- THIS DRAWING IS NOT TO SCALE



RECEIVED BY LINCOLN COUNTY SURVEYOR THIS 6TH DAY OF January 20 06
Tony Dabbs
 COUNTY SURVEYOR

E-11

SM
UA
RR
VK
EE
YR

43187

