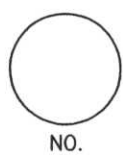
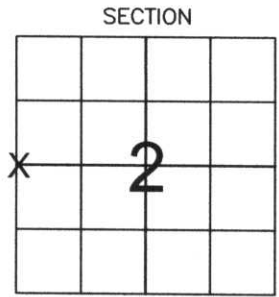


# LINCOLN COUNTY U.S. PUBLIC LAND SURVEY MONUMENT LOCATION RECORD

CORNER NUMBER 23184  
 SECTION 2  
 TOWNSHIP 31 NORTH  
 RANGE 8 EAST  
PINE RIVER  
 CITY, VILLAGE, TOWN



LANDMARK       BENCHMARK  
 FOUND  SET   
 RESET   
 RE-TIED   
 CORNER IDENTITY: WEST 1/4 CORNER  
 LINCOLN COUNTY COORDINATE: N: 129387.55  
 E: 449871.77  
 ELEVATION--(FEET): \_\_\_\_\_ DATUM: \_\_\_\_\_  
 WEATHER: PARTLY CLOUDY  
 DATE OF SURVEY: 10-11-05 TEMPERATURE: 50 °F  
 SURVEY PARTY: NATHAN WINCENTSEN, KEITH WALKOWSKI



LOCATION (Indicated By X)



## BASIS FOR MONUMENT LOCATION:

(DESCRIBE METHOD OF SURVEY AND CORNER AUTHENTICATION)

DUG FOR WEST 1/4 CORNER WITH COUNTY GRADALL, FOUND RAILROAD SPIKE IN PAVEMENT, CONTINUED DIGGING TO ORIGINAL SOIL AND FOUND NO EVIDENCE OF CORNER. ACCEPTED RAILROAD SPIKE WHICH FITS MEASUREMENTS FROM PREVIOUS SURVEYS AS BEST AVAILABLE EVIDENCE. PERPETUATED CORNER AS SHOWN BELOW.

CERTIFIED CORRECT:  
Keith J. Walkowski  
KEITH J. WALKOWSKI  
 Registered Land Surveyor  
 DATE: Jan. 3RD, 2006

FIELD BOOK NO. PINE RIVER PAGE NO. 13  
 COMPANY RIVERSIDE LAND SURVEYING LLC

## TIE SKETCH:

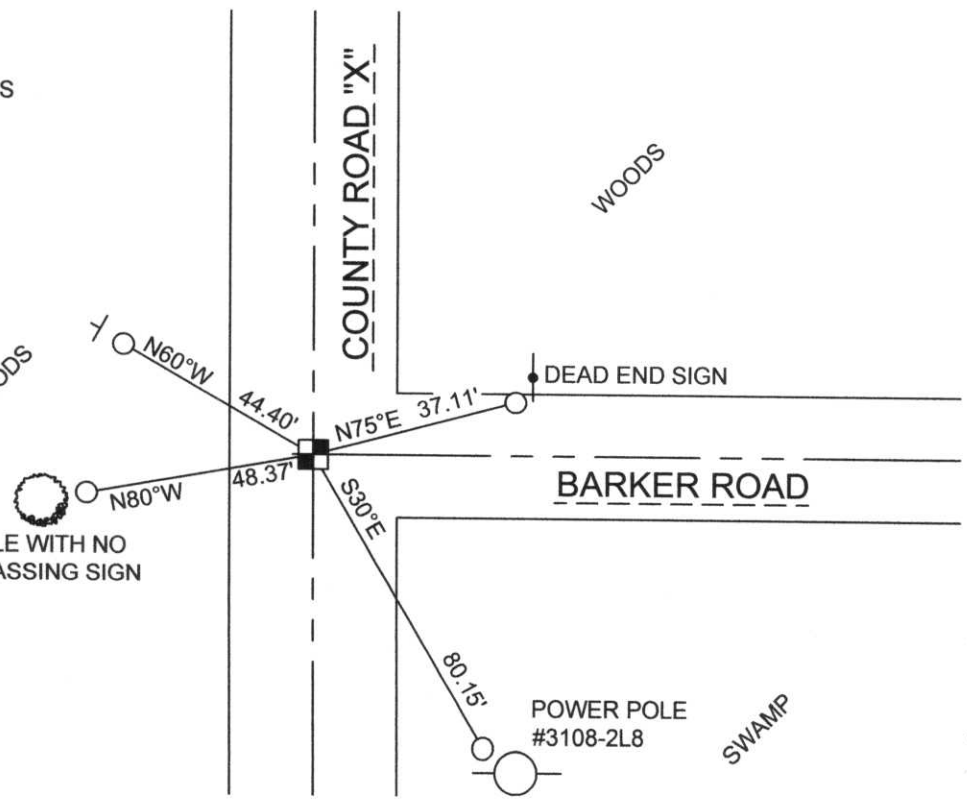
SHOW MINIMUM OF FOUR (4) HORIZONTAL TIE DISTANCES TO FIXED WITNESS MONUMENTS. DESCRIBE ALL MONUMENTS FOUND OR SET. CORRECT ALL DISTANCES SHOWN TO STANDARD TEMPERATURE OF 68° F.

- SET BERNSTEN
- SET 3/4" REBAR WITH ALUMINUM CAPS
- VINYL SURVEY MARKER POST

NOTE  
 - ALL BEARINGS ARE FROM A HAND HELD MAGNETIC COMPASS  
 - THIS DRAWING IS NOT TO SCALE

RECEIVED BY LINCOLN COUNTY SURVEYOR THIS 6TH DAY OF January 20 06  
Tony Dahn  
 COUNTY SURVEYOR

8" MAPLE WITH NO TRESPASSING SIGN



6-17