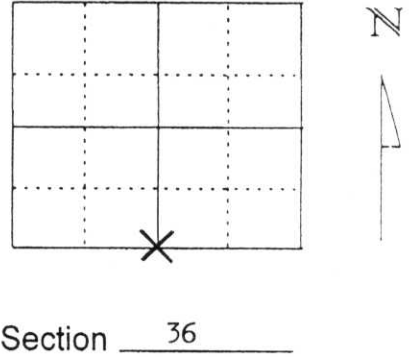


U.S. PUBLIC LAND SURVEY MONUMENT RECORD

Note: This form is intended and designed to fulfill all requirements of Wisconsin Administrative Code, Chapter A-E 5.02, U.S. Public Land Survey Monument Record (3) (a) (b) (c) (d) (e) (f) (g) (h) (l). An additional sheet may be added if necessary to conform with said requirements.

(a) Corner location: Township 31 North
 Range 7 East
 Town/City/Village PINE RIVER
 County Lincoln



(b) (f) (g) (h) Description of monument found at this corner and if it was accepted, state all evidence (material, testimonial, occupational, plats, records, other monuments) used as a basis for accepting. If not accepted or if nothing was found, state evidence used as basis for establishing location. If reestablished through lost corner proportionate methods, indicate all monuments, distances and directions used to establish.

Notes of the original government survey indicate wood posts were set at all Section and Quarter-Section Corners. Stone monuments were subsequently placed at all corners in this area during remonumentation surveys.

We excavated in blacktop road with Lincoln County grade-all. Found top of 6"x6" Granite Monument. Dug more and found base of stone. Set top 10" of stone on base and set three 1" iron pipes around stone. Top of stone is 1.6 feet below road surface. Accepted stone monument as correct location of South 1/4 corner and tied out as shown below.



(c) (d) (e) Plan view of corner with ties to at least 4 witness monuments. If in disagreement with previously established corner, show the distances between the two corners and also indicate the ties to the disputed corner.

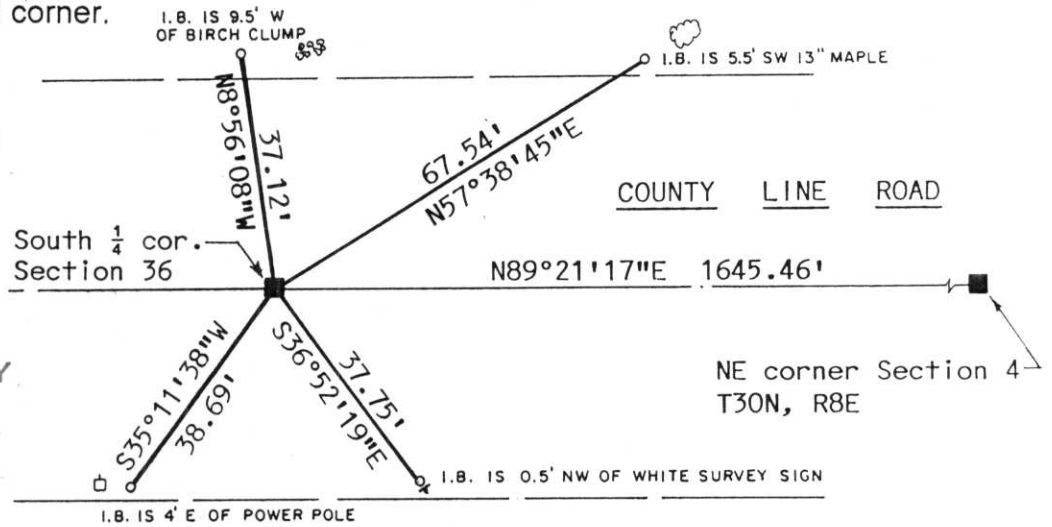
LEGEND

- Set 7/8"x30" re-bar with aluminum witness cap
- 6"x6" Granite Monument

Scale: 1"=30'

RECEIVED AT LINCOLN COUNTY COURTHOUSE THIS 24TH DAY OF October 20 03

Tom Dalko
 LAND INFORMATION OFFICER



(l) I, David J. Goslin
 (type or print name) certify that the corner location on this record was determined by me or under my direction and control and that this U.S. Public Land Survey Monument Record is correct and complete to the best of my knowledge and belief.

David J. Goslin _____
 Signature Date

March 28, 2003

Index No. Y-23