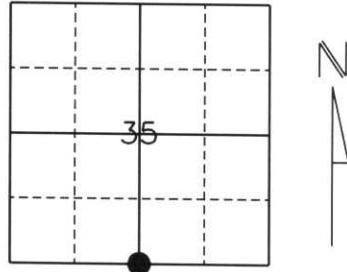


U.S. PUBLIC LAND SURVEY MONUMENT RECORD

Note: This form is intended and designed to fulfill all requirements of Wisconsin Administrative Code, Chapter A-E 5.02, U.S. Public Land Survey Monument Record (3) (a) (b) (c) (d) (e) (f) (g) (h) (i). An additional sheet may be added if necessary to conform with said requirements.

(a) Corner location: Township 31 North
 Range 7 East
 Town/City/Village Pine River
 County Lincoln



Section 35

(b) (f) (g) (h) Description of monument found at this corner and if it was accepted, state all evidence (material, testimonial, occupational, plats, records, other monuments) used as a basis for accepting. If not accepted or if nothing was found, state evidence used as a basis for establishing location. If reestablished through lost corner proportionate methods, indicate all monuments, distance and directions used to establish.

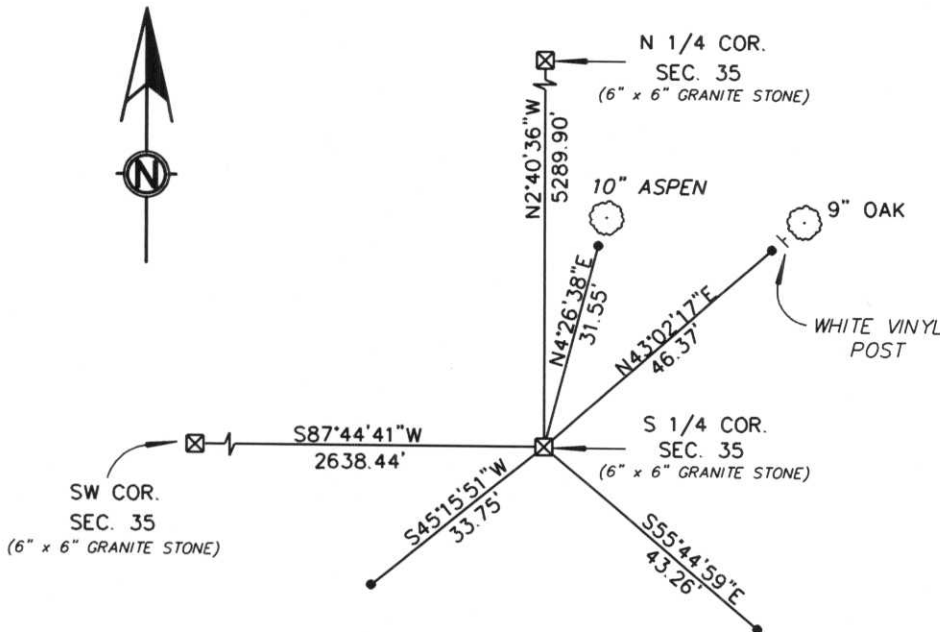
History of original corner establishment:

*Original Survey was June 25, 1851 by James Marsh. Original corner was a wooden post with bearing trees:
 18" Sugar Maple N68°E 64 lks.
 8" Ironwood N47°E 36 lks.
 16" Sugar Maple N9°W 31 lks.
 26" Sugar Maple N62°W 60 lks.
 Granite Stone was placed by unknown person and time.*

Description of corner evidence found:

We dug with a Backhoe where a downed fence line from the North intersected the center of County Line Road. We found a 6" x 6" Red Granite Stone located approximately 1 foot below the surface. We accepted this position and tied to 7/8" Rebars with Lincoln County Caps.

(c) (d) (e) Plan view of corner with ties to at least 4 witness monuments. If in disagreement with previously established corner, show the distances between the two corners and also indicate the ties to the disputed corner.



RECEIVED AT LINCOLN COUNTY COURTHOUSE THIS 1ST DAY OF November 20 02
Tony Dallen
LAND INFORMATION OFFICE

• NOTE: Drawing is not to scale. All ties with 7/8" Rebar with Lincoln County Caps approximately 2 feet from bearing trees.



(i) I, William W. Nutter RLS, S-2299
 (type or print name) certify that the corner location on this record was determined by me or under my direction and control and that this U.S. Public Land Survey Monument Record is correct and complete to the best of my knowledge and belief.

William W. Nutter, RLS

 Signature

10-24-2002

 Date

Index No. 4-19