

# U.S. PUBLIC LAND SURVEY MONUMENT RECORD

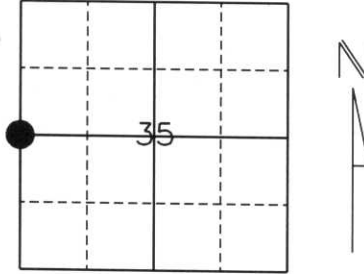
Note: This form is intended and designed to fulfill all requirements of Wisconsin Administrative Code, Chapter A-E 5.02, U.S. Public Land Survey Monument Record (3) (a) (b) (c) (d) (e) (f) (g) (h) (l). An additional sheet may be added if necessary to conform with said requirements.

(a) Corner location: Township 31 North

Range 7 East

Town/City/Village Pine River

County Lincoln



Section 35

(b) (f) (g) (h) Description of monument found at this corner and if it was accepted, state all evidence (material, testimonial, occupational, plats, records, other monuments) used as a basis for accepting. If not accepted or if nothing was found, state evidence used as a basis for establishing location. If reestablished through lost corner proportionate methods, indicate all monuments, distances and directions through to establish.

*History of original corner establishment:*

*Original Survey in 1852 by Albert Ellis and Fredrick Ellis. Original corner was a wooden post with bearing trees:*

*11" Sugar Maple S39°W 29 lks.*

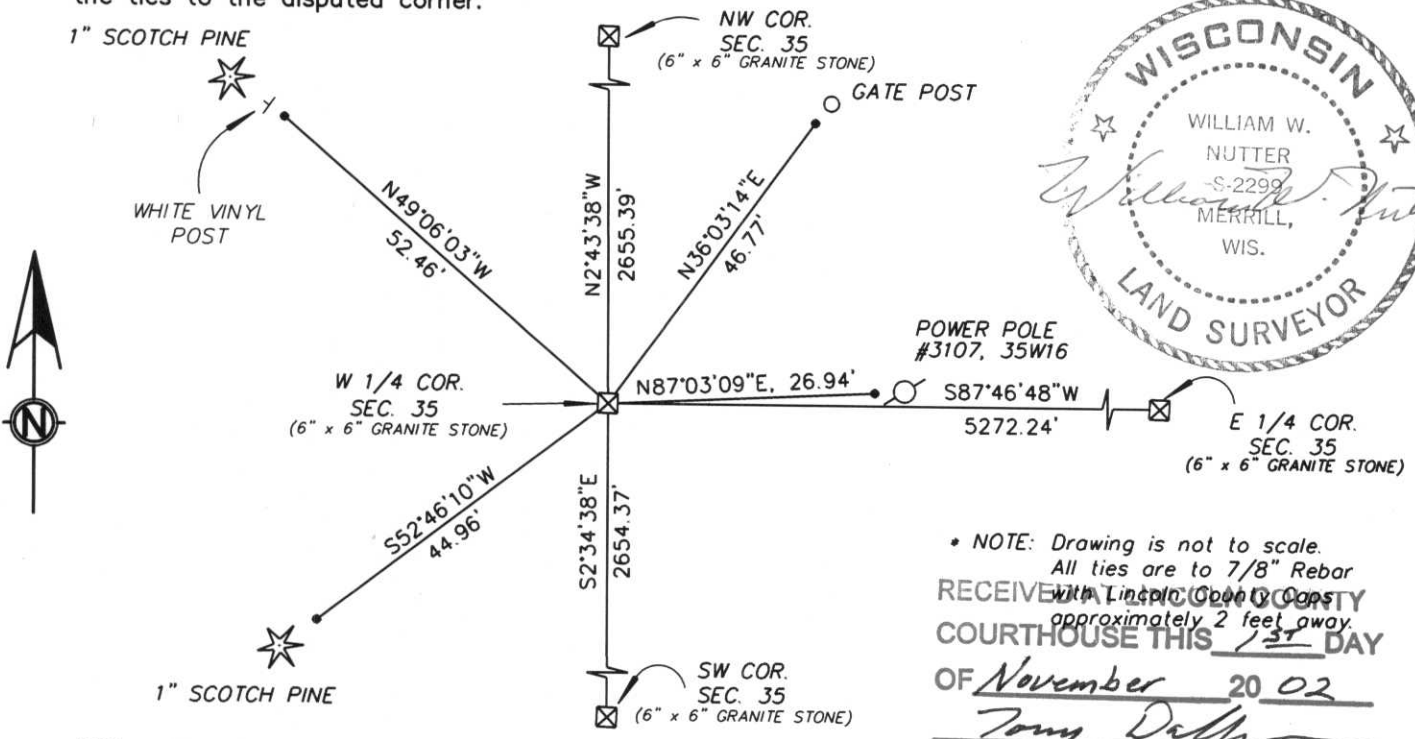
*15" Sugar Maple S57°E 12 lks.*

*Granite Stone was placed by unknown person and time.*

*Description of corner evidence found:*

*We dug with a Backhoe where a fence line intersected with Shady Lane Avenue and found a 6" x 6" Red Granite Stone located approximately 1 foot below the surface. We accepted this position and tied to 7/8" Iron Rebars with Lincoln County Caps.*

(c) (d) (e) Plan view of corner with ties to at least 4 witness monuments. If in disagreement with previously established corner, show the distances between the two corners and also indicate the ties to the disputed corner.



(l) I, William W. Nutter RLS, S-2299

(type or print name) certify that the corner location on this record was determined by me or under my direction and control and that this U.S. Public Land Survey Monument Record is correct and complete to the best of my knowledge and belief.

William W. Nutter RLS  
Signature

10-24-2002  
Date

RECEIVED IN LINCOLN COUNTY COURTHOUSE THIS 13 DAY OF November 20 02  
Tony Dehn  
LAND INFORMATION OFFICE

Index No.

11-17