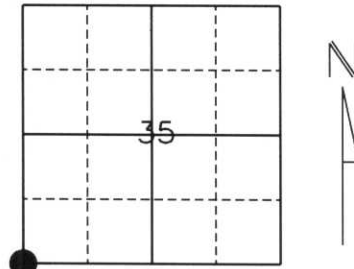


U.S. PUBLIC LAND SURVEY MONUMENT RECORD

Note: This form is intended and designed to fulfill all requirements of Wisconsin Administrative Code, Chapter A-E 5.02, U.S. Public Land Survey Monument Record (3) (a) (b) (c) (d) (e) (f) (g) (h) (i). An additional sheet may be added if necessary to conform with said requirements.

(a) Corner location: Township 31 North
 Range 7 East
 Town/City/Village Pine River
 County Lincoln



Section 35

(b) (f) (g) (h) Description of monument found at this corner and if it was accepted, state all evidence (material, testimonial, occupational, plats, records, other monuments) used as a basis for accepting. If not accepted or if nothing was found, state evidence used as a basis for establishing location. If reestablished through lost corner proportionate methods, indicate all monuments, distances and directions used to establish.

History of original corner establishment:

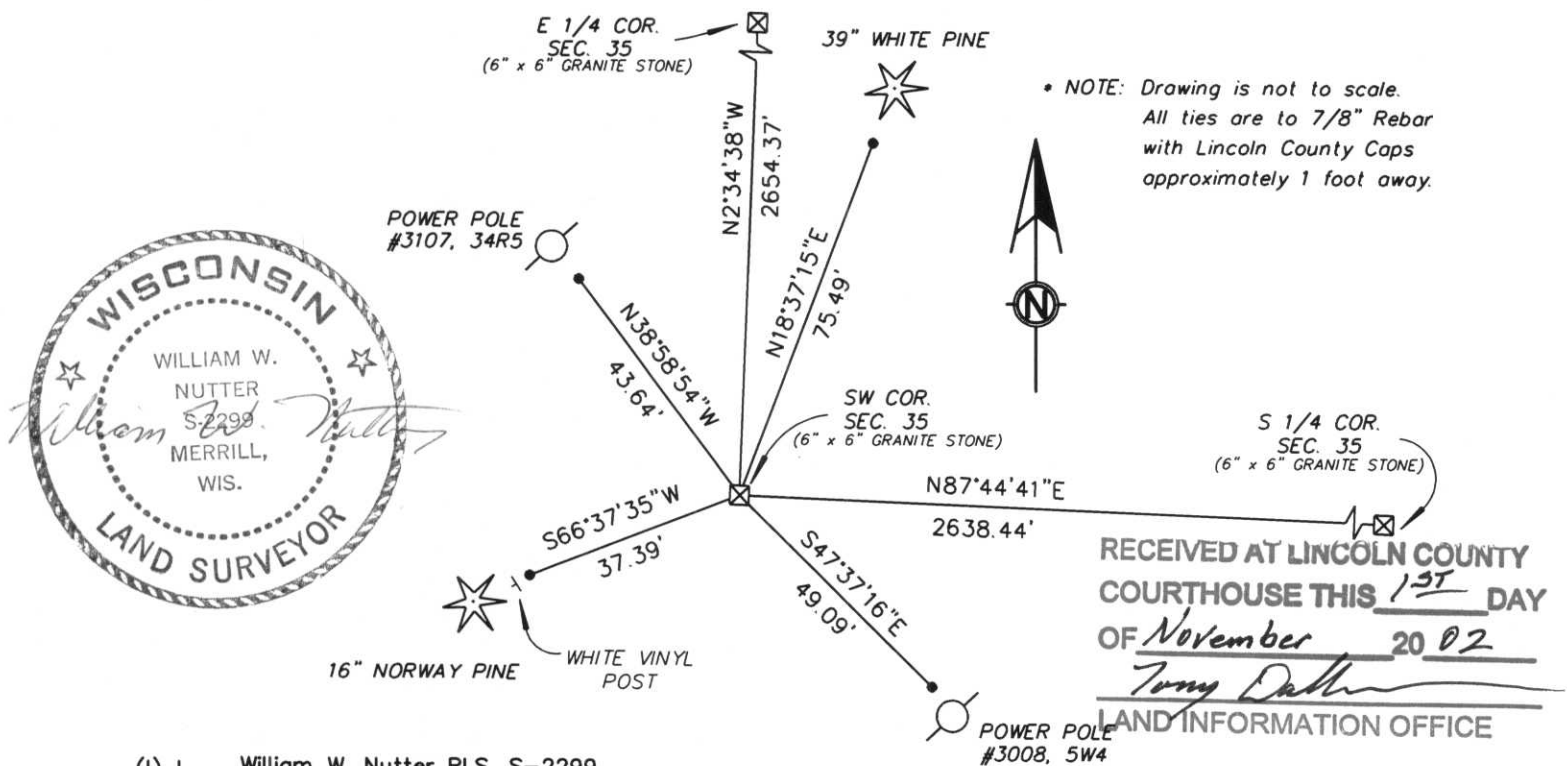
*Original Survey was June 25, 1851 by Jame Marsh. Original corner was a wooden post with bearing trees:
 12" Sugar Maple N44°E, 38 lks.
 14" Birch N26°E, 67 lks.
 12" Hemlock N10°W, 19 lks.
 14" Sugar Maple N68°W, 44 lks.*

Granite Stone was placed by unknown person and time.

Description of corner evidence found:

We dug with a Backhoe at the intersection of Shady Lane Avenue and County Line Road where we found a 6" x 6" Red Granite Stone located approximately 1 foot below the surface. We accepted this position and tied to 7/8" Rebars with Lincoln County Caps.

(c) (d) (e) Plan view of corner with ties to at least 4 witness monuments. If in disagreement with previously established corner, show the distances between the two corners and also indicate the ties to the disputed corner.



RECEIVED AT LINCOLN COUNTY
 COURTHOUSE THIS 19TH DAY
 OF November 20 02
Tony Dahn
 LAND INFORMATION OFFICE

(i) I, William W. Nutter RLS, S-2299
 (type or print name) certify that the corner location on this record was determined by me or under my direction and control and that this U.S. Public Land Survey Monument Record is correct and complete to the best of my knowledge and belief.

William W. Nutter, RLS
 Signature

10-24-2002
 Date

Index No.

1-17