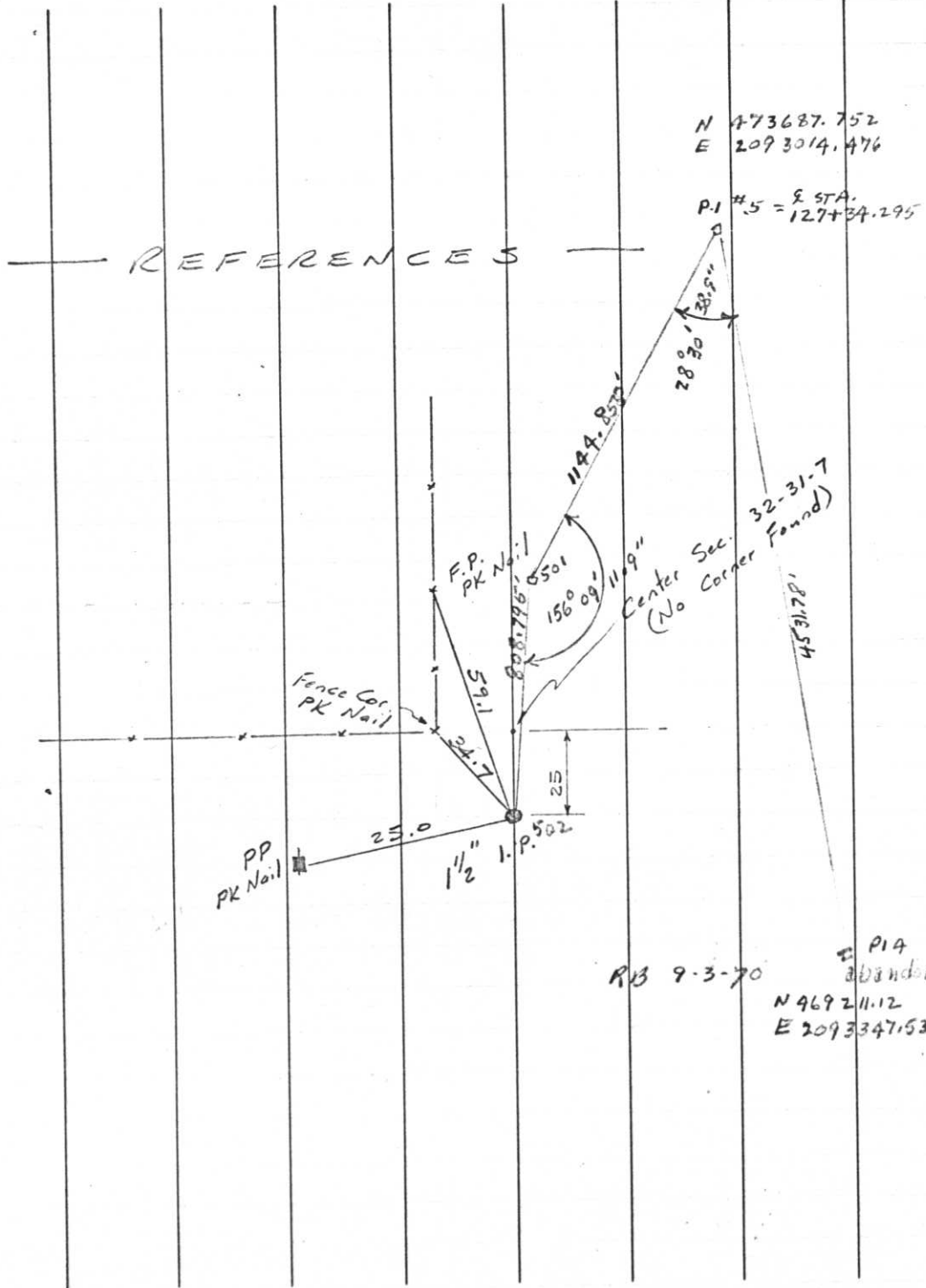


129.



RB 9-3-70

E P14 abandoned
N 969211.12
E 2093347.533

W-7

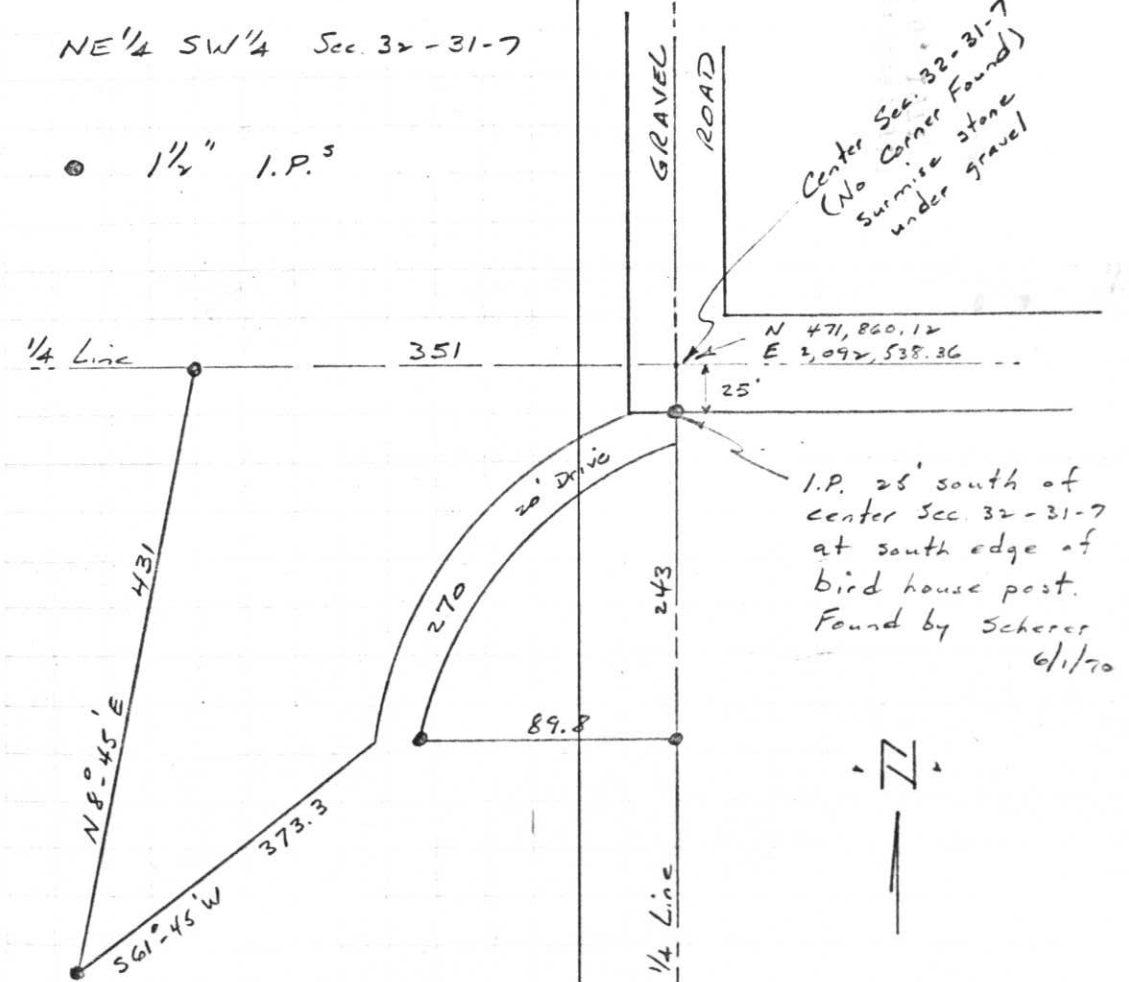
T31N, R7E

June 1, 1970

Note: Sketch taken from
survey by A.W. Kordick
W.L.S. 5/9/67

NE 1/4 SW 1/4 Sec. 32-31-7

1 1/2" I.P.



Project I.D. 1173-2-00 So. Co. Line
-1.4 Mi. N. Merrill U.S.H. 51
Freeway Lincoln County Wm. Scherer
Surveyor Received from Division of
Hwy's Jan. 11. 1973