

# U.S. PUBLIC LAND SURVEY MONUMENT RECORD

NOTE: THIS FORM IS INTENDED AND DESIGNED TO FULFILL ALL REQUIREMENTS OF WISCONSIN ADMINISTRATIVE CODE, CHAPTER A-E 7.08, U.S. PUBLIC LAND SURVEY MONUMENT RECORD (3)(a)(b)(c)(d)(e)(f)(g)(h)(i). ADDITIONAL SHEETS MAY BE NECESSARY TO CONFORM TO SAID REQUIREMENTS.

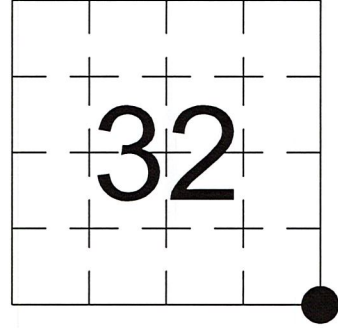
T 31 N, R 7 E

**(a) CORNER LOCATION:**

SOUTHEAST CORNER, SECTION 32  
 TOWNSHIP 31 NORTH  
 RANGE 7 EAST  
 TOWN OF PINE RIVER  
 LINCOLN COUNTY  
 WISCONSIN

**(b) HISTORY OF ORIGINAL CORNER:**

ORIGINAL SURVEYOR: See Previous Tie Sheet  
 COMMENCING DATE:  
 COMPLETION DATE:  
 ORIGINAL BEARING TREES:



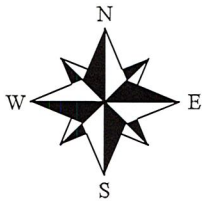
**(f)(g)(h) DESCRIPTION OF MONUMENT FOUND AT THIS CORNER AND IF IT WAS ACCEPTED. STATE ALL EVIDENCE (MATERIAL, TESTIMONIAL, OCCUPATIONAL, PLATS, RECORDS, OTHER MONUMENTS) USED AS A BASIS FOR ESTABLISHING LOCATION. IF RE-ESTABLISHING THROUGH LOST CORNER PROPORTIONATE METHODS, INDICATE ALL MONUMENTS, DISTANCES, AND DIRECTIONS USED TO ESTABLISH. INDICATE TYPE OF MONUMENTS FOUND OR SET.**

9/16/1971, Edwin Abendroth, found a 6" square Stone Monument 1.08' West of 6" square Concrete Monument marking the NE Corner of Section 2-30-7.

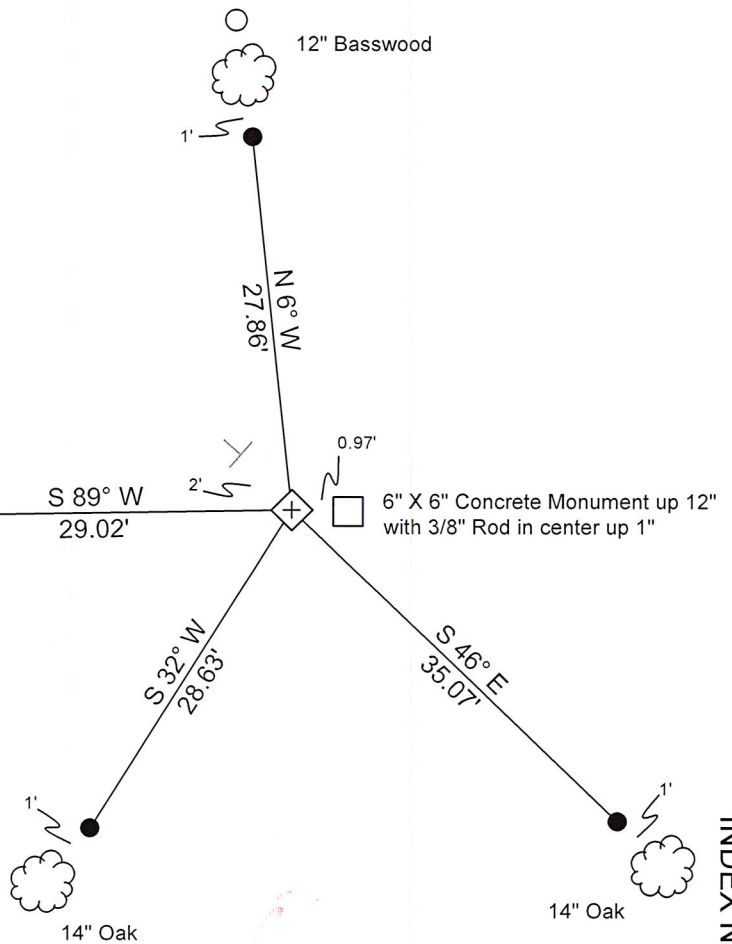
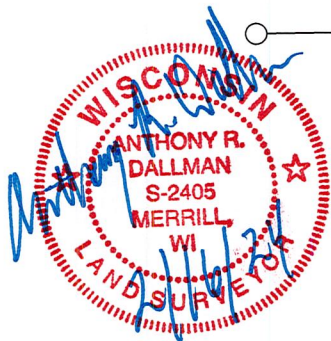
10/10/2023, I, Anthony R. Dallman, PLS-2405, found a 6" X 6" Granite Monument, up 6", and the 2 iron witness monuments. I accepted this location and set witness monuments, as shown in the sketch below, to further perpetuate the corner location.

**(c)(d)(e) PLAN VIEW OF THE CORNER WITH TIES TO AT LEAST FOUR WITNESSES. IF IN DISAGREEMENT WITH PREVIOUSLY ESTABLISHED CORNER, SHOW THE DISTANCES BETWEEN THE TWO CORNERS AND ALSO THE TIES TO THE DISPUTED CORNER.**

- Tie bearings by hand-held compass.
- Tie distances by steel tape.
- Not to scale.



- - 1 3/4" O.D. Iron Pipe
- - Set 3/4" Capped Rebar
- ⊥ - Set Vinyl Post



I, ANTHONY R. DALLMAN, WISCONSIN PROFESSIONAL LAND SURVEYOR, S-2405, HEREBY CERTIFY THAT THE CORNER LOCATION ON THIS RECORD WAS REFERENCED BY ME OR UNDER MY DIRECTION AND CONTROL AND THAT THIS U.S. PUBLIC LAND SURVEY MONUMENT RECORD IS COMPLETE TO THE BEST OF MY KNOWLEDGE AND BELIEF.

*Anthony R. Dallman* 02/16/24  
 ANTHONY R. DALLMAN, PLS S-2405

INDEX NO. Y-09



43107320000\_Mon-N





4310732000\_North





43107320000\_West





4310732000\_South





43107320000\_East





MARATHON COUNTY  
**SURVEY MONUMENT LOCATION RECORD**

SECTION 2  
 TOWNSHIP 30  
 RANGE 7  
 TEXAS  
 (CITY, VILLAGE, TOWN)

11  
 NO.

LANDMARK     BENCHMARK    FOUND   
 CORNER IDENTITY: NE COR SEC. 2-30-7    SET   
 STATE PLANE COORDINATE: N: \_\_\_\_\_    RE-SET   
 ZONE: \_\_\_\_\_ E: \_\_\_\_\_    RE-TIED   
 ELEVATION -(FEET): \_\_\_\_\_ DATUM: \_\_\_\_\_  
 THETA ANGLE: \_\_\_\_\_ WEATHER: \_\_\_\_\_  
 DATE OF SURVEY: SEPT. 16, 1971 TEMPERATURE: 65 °F  
 SURVEY PARTY: ABENDROTH, DENZINE, LOBNER



**BASIS FOR MONUMENT LOCATION:**  
 (DESCRIBE METHOD OF SURVEY AND CORNER AUTHENTICATION)

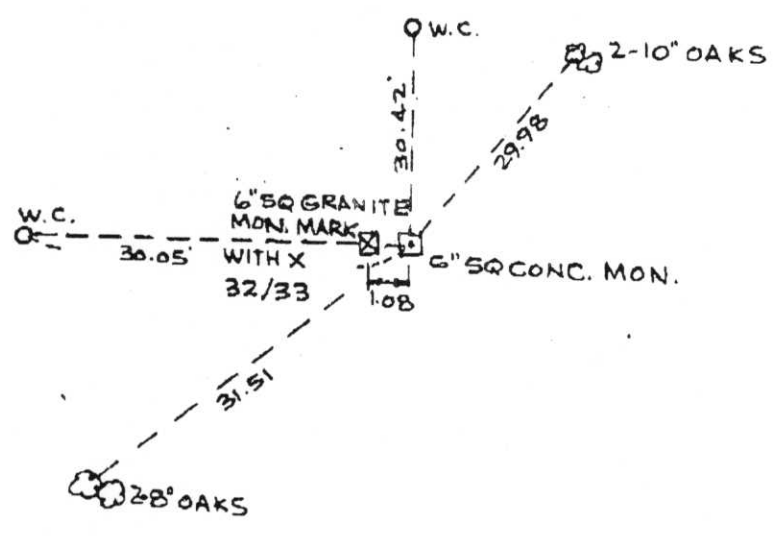
LOCATED STONE MONUMENT FOR SE COR SEC. 32-31-7 (LINCOLN COUNTY), ACCORDING TO THE ORIGINAL GOV'T. NOTES SET 6" SQ CONC. MON. 1.64 LINKS EAST OF EXISTING COR.    SEAL



(SE 32-31-7)

CERTIFIED CORRECT:  
Edwin R. Abendroth  
 5-798  
 REGISTERED LAND SURVEYOR  
 DATE: SEPT. 21, 1971

**TIE SKETCH:** SHOW MINIMUM OF THREE (3) HORIZONTAL TIE DISTANCES TO FIXED WITNESS MONUMENTS. DESCRIBE ALL MONUMENTS FOUND OR SET. CORRECT ALL DISTANCES SHOWN TO STANDARD TEMPERATURE OF 68° F.



NO. 205 001    MARATHON COUNTY PLNG ZNG LAND + 9121553660382    15:52    09/29/98

RECEIVED AT LINCOLN COUNTY  
 COURTHOUSE THIS 29 DAY  
 OF Sept 19 98  
 TAX DESCRIPTION OFFICE

6-9