

U.S. PUBLIC LAND SURVEY MONUMENT RECORD

NOTE: THIS FORM IS INTENDED AND DESIGNED TO FULFILL ALL REQUIREMENTS OF WISCONSIN ADMINISTRATIVE CODE, CHAPTER A-E 7.08, U.S. PUBLIC LAND SURVEY MONUMENT RECORD (3)(a)(b)(c)(d)(e)(f)(g)(h)(i). ADDITIONAL SHEETS MAY BE NECESSARY TO CONFORM TO SAID REQUIREMENTS.

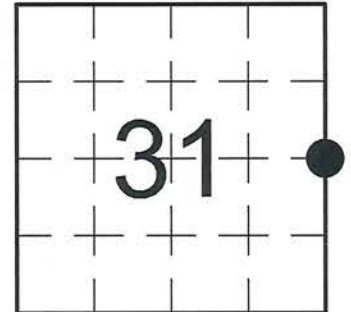
T 31 N, R 7 E

(a) CORNER LOCATION:

EAST QUARTER CORNER, SECTION 31
 TOWNSHIP 31 NORTH
 RANGE 7 EAST
 TOWN OF SCOTT
 LINCOLN COUNTY
 WISCONSIN

(b) HISTORY OF ORIGINAL CORNER:

ORIGINAL SURVEYOR: A.G. & F.S. Ellis; Set post
 COMMENCING DATE: February 26, 1852
 COMPLETION DATE: March 8, 1852
 ORIGINAL BEARING TREES:
 26" Pine; S 72° W; 13 links
 12" Hemlock; N 42° W; 39 links



(f)(g)(h) DESCRIPTION OF MONUMENT FOUND AT THIS CORNER AND IF IT WAS ACCEPTED. STATE ALL EVIDENCE (MATERIAL, TESTIMONIAL, OCCUPATIONAL, PLATS, RECORDS, OTHER MONUMENTS) USED AS A BASIS FOR ESTABLISHING LOCATION. IF RE-ESTABLISHING THROUGH LOST CORNER PROPORTIONATE METHODS, INDICATE ALL MONUMENTS, DISTANCES, AND DIRECTIONS USED TO ESTABLISH. INDICATE TYPE OF MONUMENTS FOUND OR SET.

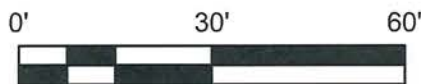
06/20/1903 - L. Kleinschmidt & H. Rusch, surveyors, set quarter stone during remonumentation project for the Town of Scott.

06/01/1970 - Wm. Scherer, for Highway Project I.D. 1173-2-00, found a 6" x 6" Granite Stone w/ chiseled "x", 1' west of fence corner. Made bearing trees to perpetuate corner location.

11/01/1979 - S. Schwark, RLS 1205, shows a 6" x 6" Granite Monument found in place on Lincoln County Map No. L51A.

08/05/2014 - I, Anthony R. Dallman, PLS 2405, found the 6" x 6" Granite Stone Monument, down 6" in gravel, leaning northwesterly, with an Iron Pipe along the northerly edge. I re-plumbed the Stone in place and re-set the Iron Pipe along the northerly edge to aid in relocation. I set three new ties and measured to an existing Iron Pipe to further perpetuate the corner location, as shown in the sketch below.

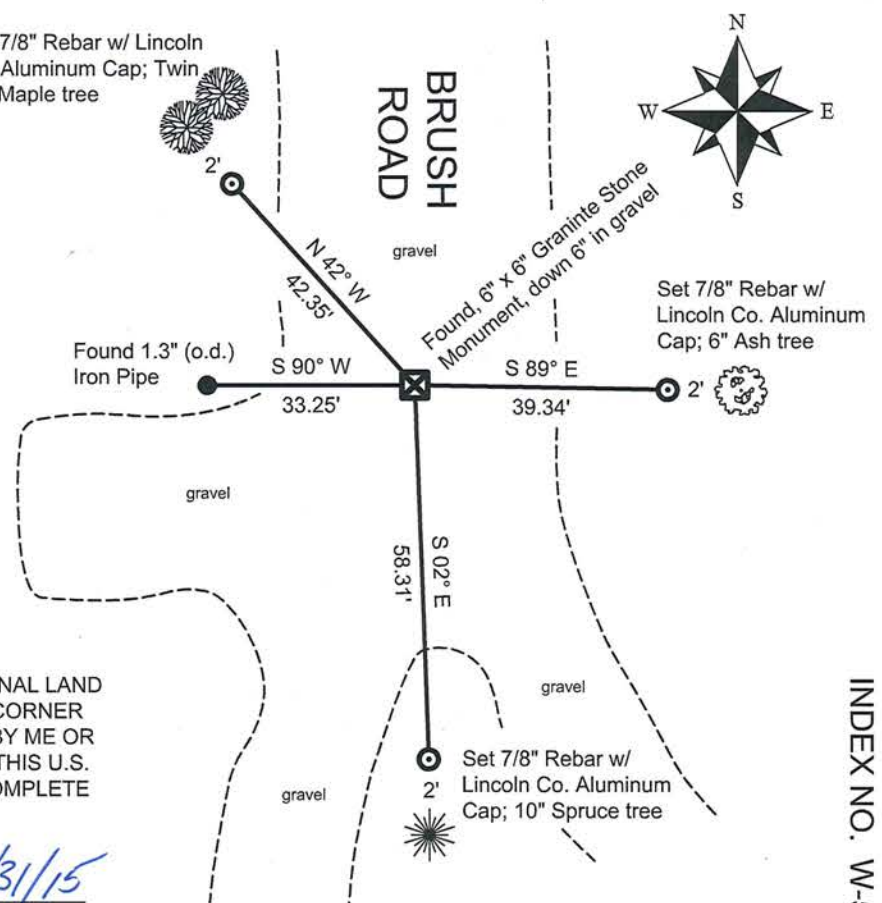
(c)(d)(e) PLAN VIEW OF THE CORNER WITH TIES TO AT LEAST FOUR WITNESSES. IF IN DISAGREEMENT WITH PREVIOUSLY ESTABLISHED CORNER, SHOW THE DISTANCES BETWEEN THE TWO CORNERS AND ALSO THE TIES TO THE DISPUTED CORNER.



- Bearings by hand-held compass.
 - Distances by steel tape.



Set 7/8" Rebar w/ Lincoln Co. Aluminum Cap; Twin 12" Maple tree



I, ANTHONY R. DALLMAN, WISCONSIN PROFESSIONAL LAND SURVEYOR, S-2405, HEREBY CERTIFY THAT THE CORNER LOCATION ON THIS RECORD WAS REFERENCED BY ME OR UNDER MY DIRECTION AND CONTROL AND THAT THIS U.S. PUBLIC LAND SURVEY MONUMENT RECORD IS COMPLETE TO THE BEST OF MY KNOWLEDGE AND BELIEF.

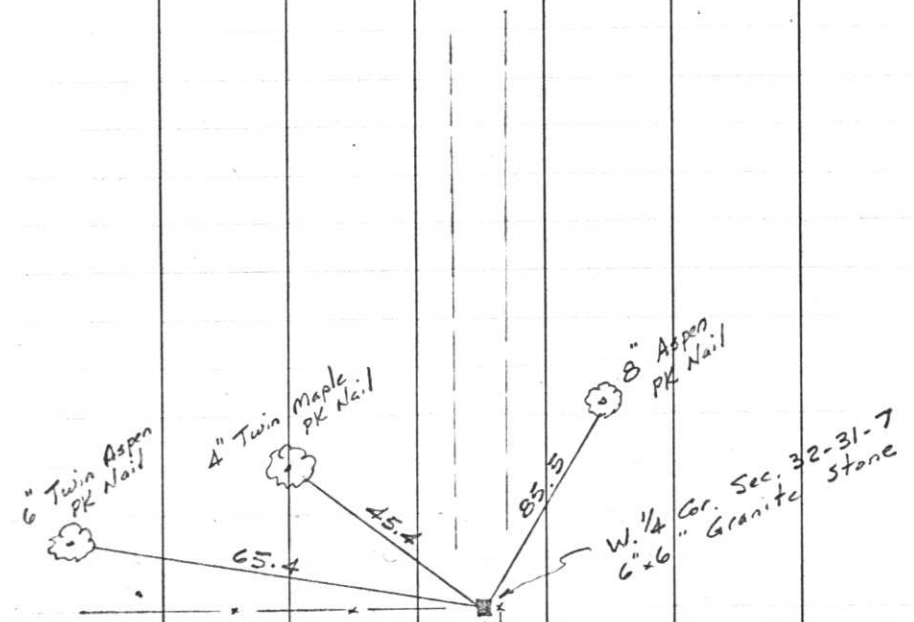
Anthony R. Dallman 7/31/15
 ANTHONY R. DALLMAN, PLS S-2405

INDEX NO. W-5

June 1, 1970

T 31 N, R 7 E

REFERENCES



Project T.D. 1173-2-00 So. Co. Line
 -1.4 Mi. N. Merrill U.S.H. 51
 Freeway Lincoln County Wm. Scherer
 Surveyor Received from Division of
 Hwy's Jan. 11. 1973

RIVER

AVE.

NW Corner
 Sec. 32-31-7
 (Not Found)

BRUSH ROAD
 Not marked



End of Road

± 200'

1/4 Line

W. 1/4 Corner
 Sec. 32-31-7
 6"x6" Granite Stone
 Chiseled
 West of fence corner
 Found by Scherer 6/1/70

N 471,849.98
 2,089,916.30

SEC. LINE