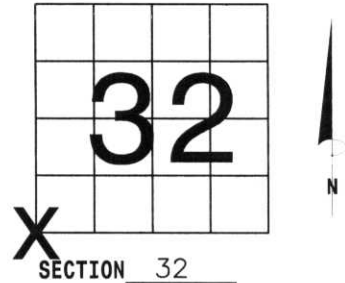


U.S. PUBLIC LAND SURVEY MONUMENT RECORD

NOTE: THIS FORM IS INTENDED AND DESIGNED TO FULFILL ALL REQUIREMENTS OF WISCONSIN ADMINISTRATIVE CODE, CHAPTER A-E 7.08 U.S. PUBLIC LAND SURVEY MONUMENT RECORD (3) (a) (b) (c) (d) (e) (f) (g) (h) (i). AN ADDITIONAL SHEET MAY BE ADDED IF NECESSARY TO CONFORM WITH SAID REQUIREMENTS.

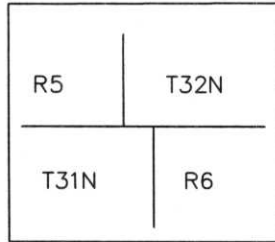
(a) CORNER LOCATION: TOWNSHIP 31 NORTH
 RANGE 7 EAST/~~WEST~~
 TOWN/CITY/VILLAGE SCOTT
 COUNTY LINCOLN



(b) (f) (g) (h) DESCRIPTION OF MONUMENT FOUND AT THIS CORNER AND IF IT WAS ACCEPTED, STATE ALL EVIDENCE (MATERIAL, TESTIMONIAL, OCCUPATIONAL, PLATS, RECORDS, OTHER MONUMENTS) USED AS BASIS FOR ACCEPTING. IF NOT ACCEPTED OR IF NOTHING WAS FOUND, STATE EVIDENCE USED AS BASIS FOR ESTABLISHING LOCATION. IF REESTABLISHED THROUGH LOST CORNER PROPORTIONATE METHODS, INDICATE ALL MONUMENTS, DISTANCES AND DIRECTIONS USED TO ESTABLISH. INDICATE TYPE OF MONUMENT FOUND OR SET AND SIGN POST.

ON FEBRUARY 8, 2005, I FOUND A 6x6 X40" GRANITE MONUMENT, LAYING DOWN, FROZEN TO THE GROUND. USING REMNANTS OF OLD TIES, I DETERMINED LOCATION OF STONE. CAME BACK IN APRIL AND DUG DEEPER HOLE FOR STONE. RE SET STONE. STONE IS IN WET AREA AND MAY SHIFT WITH TIME. TIED OUT. STONE IS ON WEST EDGE OF CLEARING FOR HIGH VOLTAGE POWER LINE.

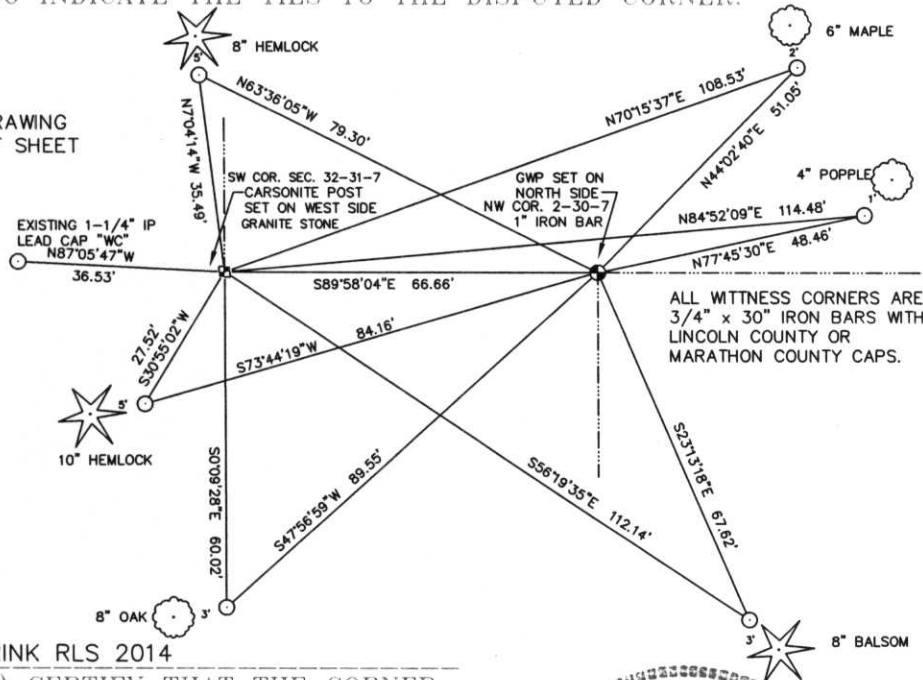
STONE IS INCORRECTLY MARKED AS:



RECEIVED BY LINCOLN COUNTY SURVEYOR THIS 21ST DAY OF April 20 05
Tony Dahl
 COUNTY SURVEYOR

(c) (d) (e) PLAN VIEW OF CORNER WITH TIES TO AT LEAST 4 WITNESS MONUMENTS. IF IN DISAGREEMENT WITH PREVIOUSLY ESTABLISHED CORNER, SHOW THE DISTANCES BETWEEN THE TWO CORNERS AND ALSO INDICATE THE TIES TO THE DISPUTED CORNER.

NOTE: FOR LARGER DRAWING OF TIES, SEE BACK OF SHEET

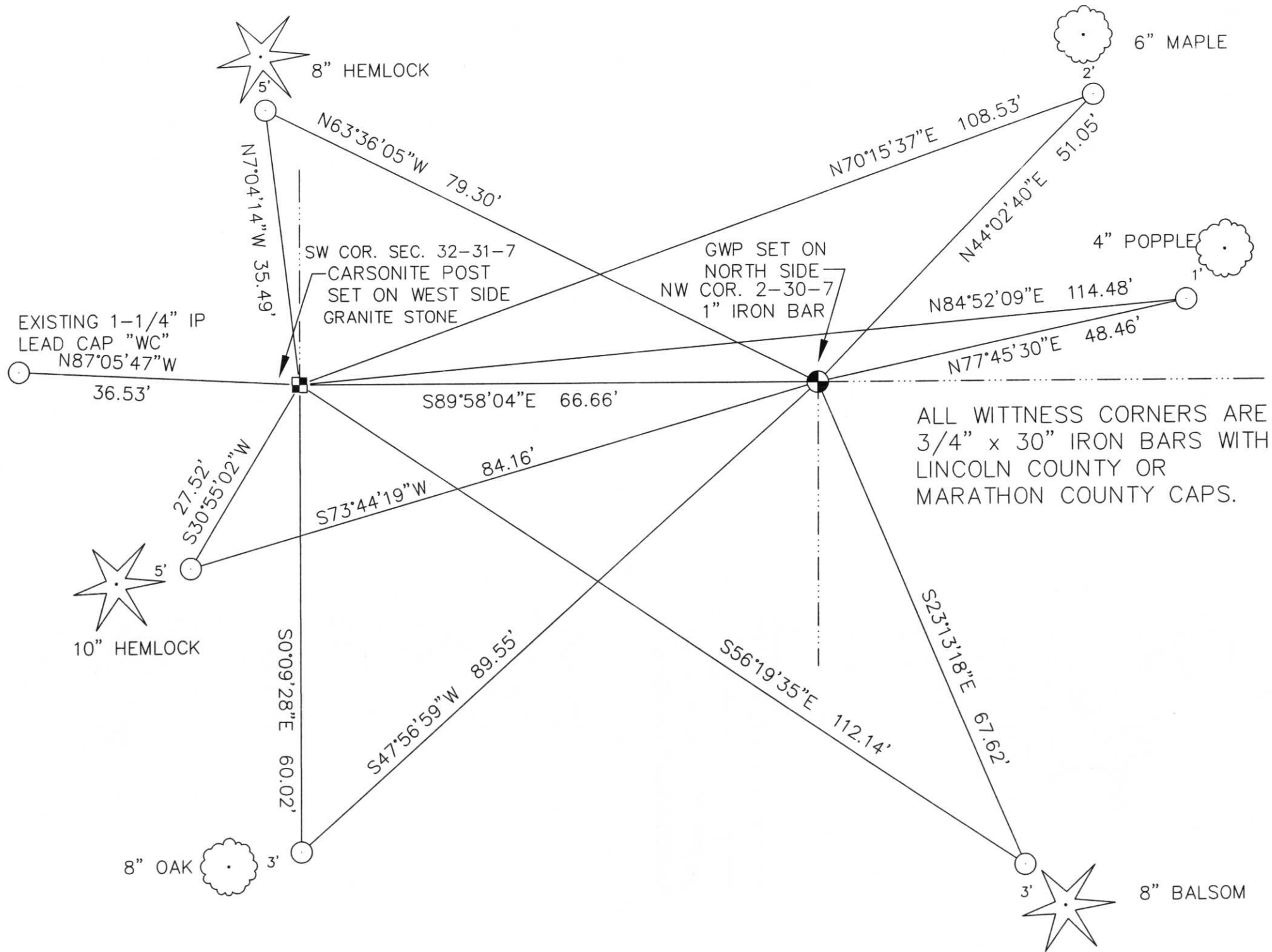


(i) I, DAVID L. OSTERBRINK RLS 2014 (TYPE OR PRINT NAME) CERTIFY THAT THE CORNER LOCATION ON THIS RECORD WAS DETERMINED BY ME OR UNDER MY DIRECTION AND CONTROL AND THAT THIS U.S. PUBLIC LAND SURVEY MONUMENT RECORD IS CORRECT AND COMPLETE TO THE BEST OF MY KNOWLEDGE AND BELIEF.

David L. Osterbrink
 SIGNATURE 4-13-05
 DATE



INDEX NO. 4-5



LINCOLN
MARATHON COUNTY

LISTED IN BOOK

SURVEY MONUMENT LOCATION RECORD

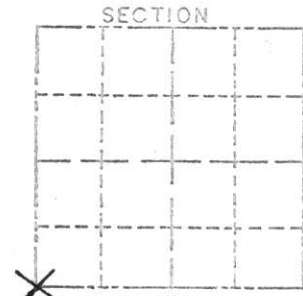
SECTION 32
TOWNSHIP 31N
RANGE 7E
SCOTT
(CITY, VILLAGE, TOWN)

159

NO.

LANDMARK BENCHMARK _____ FOUND
CORNER IDENTITY: 6" SQ. RED GRANITE MON SET
STATE PLANE COORDINATE: N: _____ RE-SET
ZONE: _____ E: _____ RE-TIED

ELEVATION -(FEET): _____ DATUM: _____
THETA ANGLE: _____ WEATHER: SUNNY
DATE OF SURVEY: FEB 1, 1972 TEMPERATURE: 10 °F
SURVEY PARTY: ABENDROTH, DENZINE, MOSHER

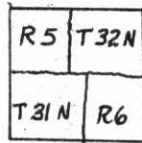


LOCATION
(INDICATED BY X)

BASIS FOR MONUMENT LOCATION:

(DESCRIBE METHOD OF SURVEY AND CORNER AUTHENTICATION)

FOUND 6" x 6" RED GRANITE MONUMENT IN- SEAL
SCRIBED AS FOLLOWS:



MONUMENT IS IN PLACE AND ABOUT 8" ABOVE GROUND.

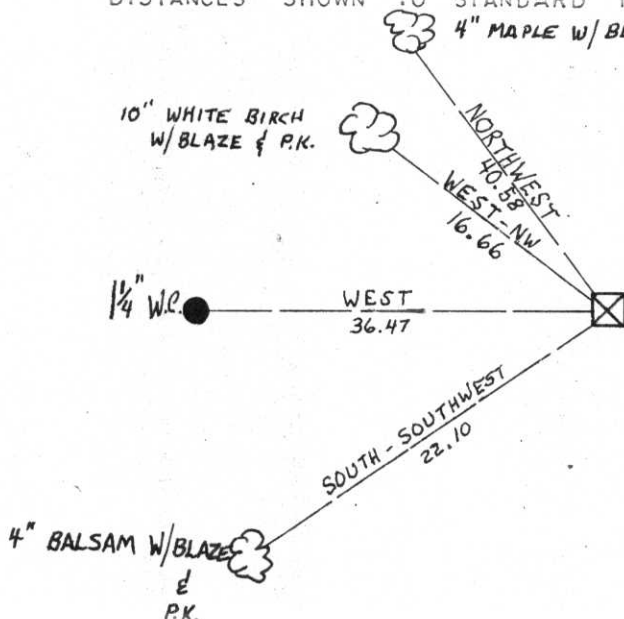
CERTIFIED CORRECT:

Edwin R. Abendroth
5-798

REGISTERED LAND SURVEYOR

DATE: Feb 21, 1972

TIE SKETCH: SHOW MINIMUM OF THREE (3) HORIZONTAL TIE DISTANCES TO FIXED WITNESS MONUMENTS. DESCRIBE ALL MONUMENTS FOUND OR SET. CORRECT ALL DISTANCES SHOWN TO STANDARD TEMPERATURE OF 68° F.



RECEIVED AT LINCOLN COUNTY
COURTHOUSE THIS 30TH DAY
OF December 20 02
Tony Walker
LAND INFORMATION OFFICE

4-5

LINCOLN
MARATHON COUNTY

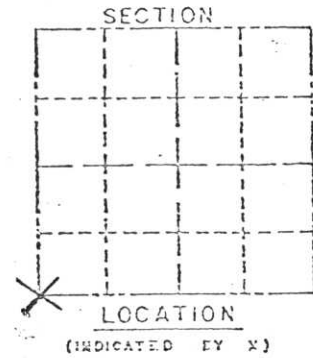
SURVEY MONUMENT LOCATION RECORD

SECTION 32
TOWNSHIP 31N
RANGE 7E
SCOTT
(CITY, VILLAGE, TOWN)

159
NO.

LANDMARK BENCHMARK SET
CORNER IDENTITY: 6" SQ. RED GRANITE MON RE-SET
STATE PLANE COORDINATE: N: _____ RE-TIED
ZONE: _____ E: _____

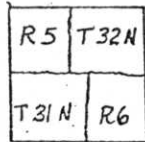
ELEVATION -(FEET): _____ DATUM: _____
THETA ANGLE: _____ WEATHER: SUNNY
DATE OF SURVEY: FEB 1, 1972 TEMPERATURE: 10 °F
SURVEY PARTY: ABENDROTH, DENZINE, MOSHER



BASIS FOR MONUMENT LOCATION:

(DESCRIBE METHOD OF SURVEY AND CORNER AUTHENTICATION)

FOUND 6" x 6" RED GRANITE MONUMENT IN - SEAL
SCRIBED AS FOLLOWS:



MONUMENT IS IN PLACE AND ABOUT 8" ABOVE GROUND.

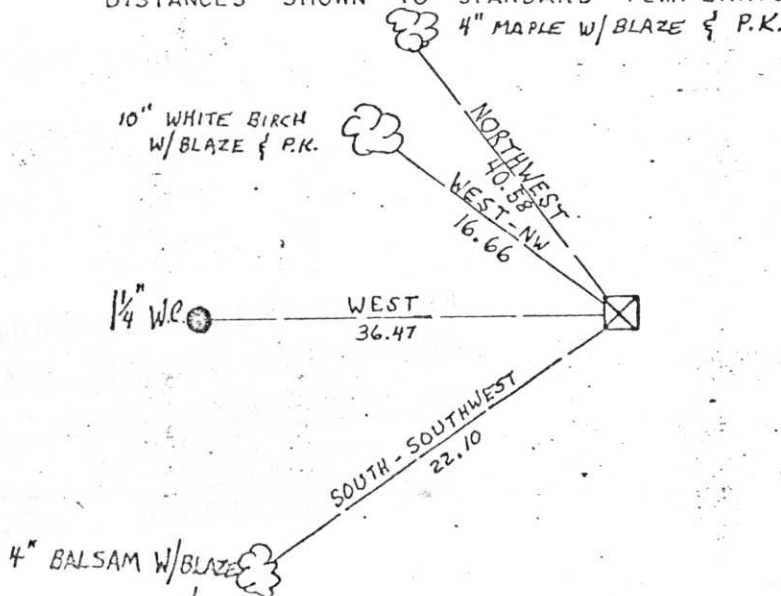
CERTIFIED CORRECT:

Edwin R. Abendroth
5-798

REGISTERED LAND SURVEYOR

DATE: Feb 21, 1972

TIE SKETCH: SHOW MINIMUM OF THREE (3) HORIZONTAL TIE DISTANCES TO FIXED WITNESS MONUMENTS. DESCRIBE ALL MONUMENTS FOUND OR SET. CORRECT ALL DISTANCES SHOWN TO STANDARD TEMPERATURE OF 68° F.



4-5

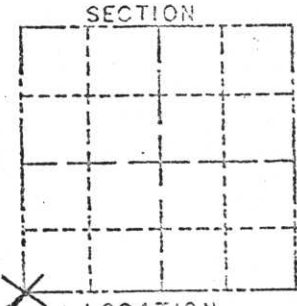
LINCOLN
MARATHON COUNTY

SURVEY MONUMENT LOCATION RECORD

FOUND LANDMARK BENCHMARK _____ SET
 CORNER IDENTITY: 6" SQ. RED GRANITE MON RE-SET
 STATE PLANE COORDINATE: N: _____ RE-TIED
 ZONE: _____ E: _____
 ELEVATION -(FEET): _____ DATUM: _____
 THETA ANGLE: _____ WEATHER: SUNNY
 DATE OF SURVEY: FEB 1, 1972 TEMPERATURE: 10 °F
 SURVEY PARTY: ABENDROTH, DENZINE, MOSHER

SECTION 32
 TOWNSHIP 31N
 RANGE 7E
SCOTT
 (CITY, VILLAGE, TOWN)

159
 NO.



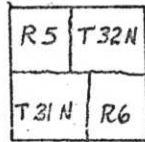
LOCATION
 (INDICATED BY X)



BASIS FOR MONUMENT LOCATION:

(DESCRIBE METHOD OF SURVEY AND CORNER AUTHENTICATION)

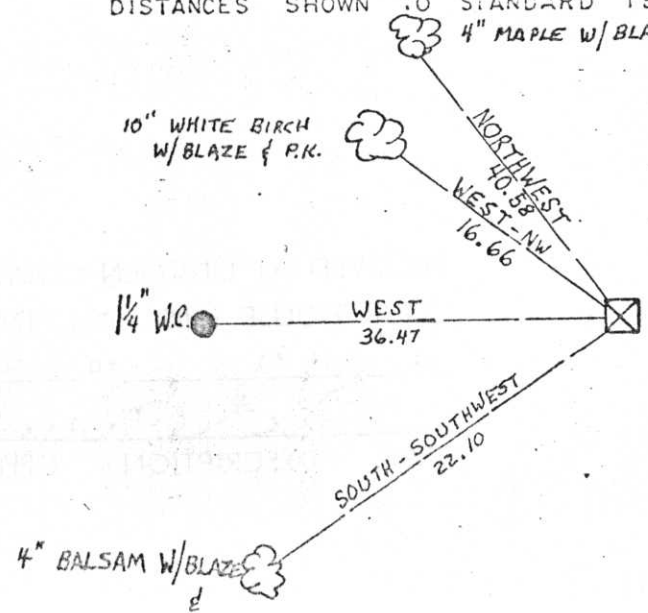
FOUND 6" x 6" RED GRANITE MONUMENT IN - SEAL
 SCRIBED AS FOLLOWS:



MONUMENT IS IN PLACE AND ABOUT 8" ABOVE GROUND.

CERTIFIED CORRECT:
Edwin R. Abendroth
 5-798
 REGISTERED LAND SURVEYOR
 DATE: Feb 21, 1972

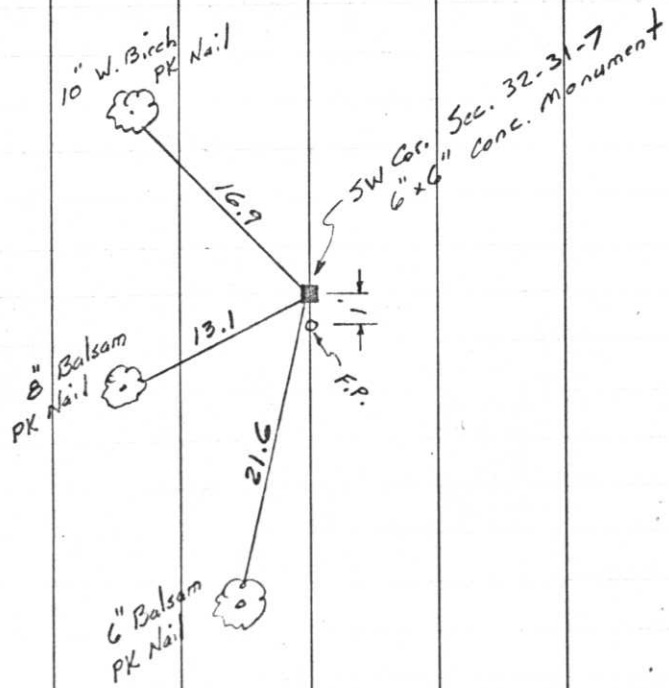
TIE SKETCH: SHOW MINIMUM OF THREE (3) HORIZONTAL TIE DISTANCES TO FIXED WITNESS MONUMENTS. DESCRIBE ALL MONUMENTS FOUND OR SET. CORRECT ALL DISTANCES SHOWN TO STANDARD TEMPERATURE OF 68° F.



1-5

131.

REFERENCES

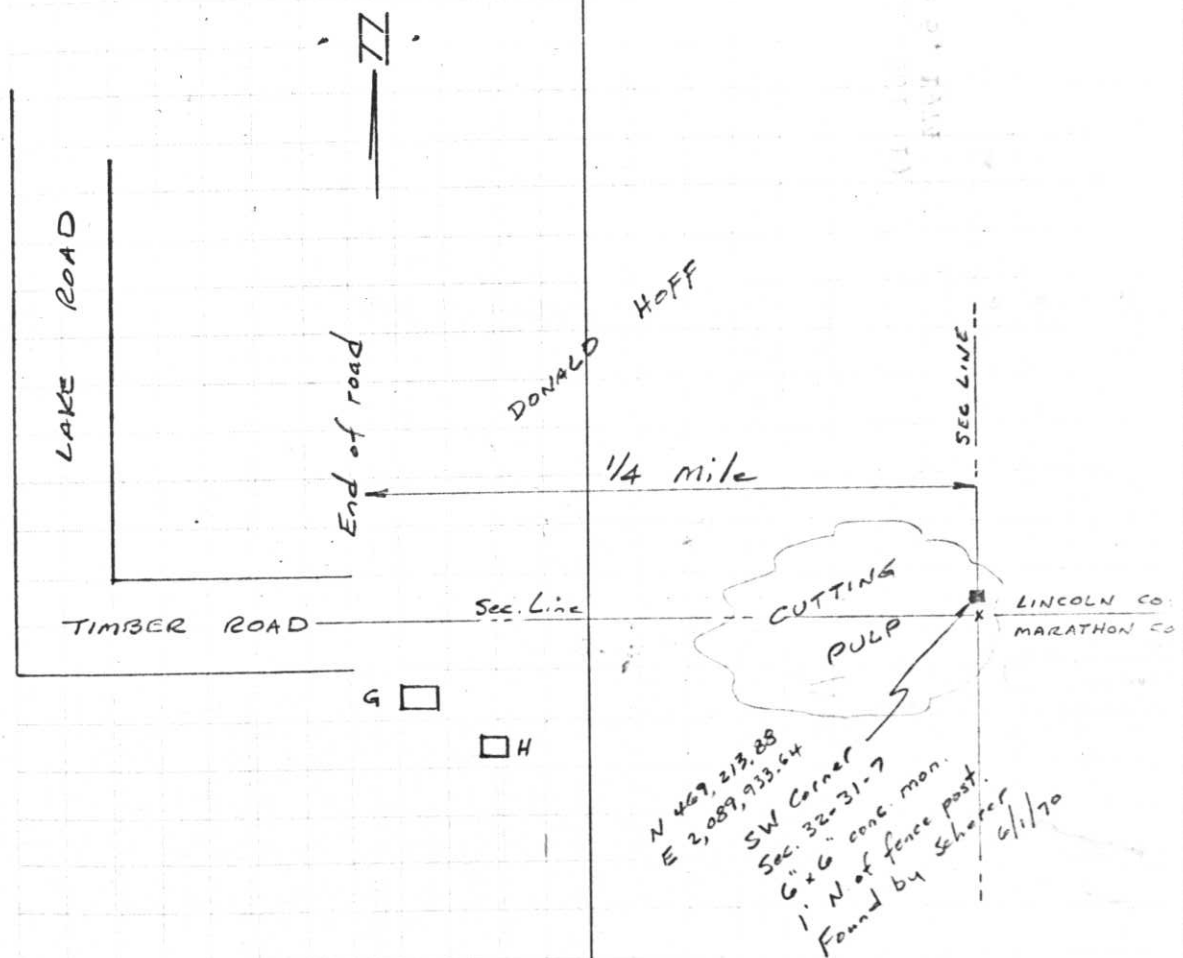


Project I.D. 1173-2-00 So. Co. Line
 -1.4 Mi. N. Merrill U.S.H. 51
 Freeway Lincoln County Wm. Scherer
 Surveyor Received from Division of
 Hwy's Jan. 11, 1973

Y-5 5.

T 31 N , R 7 E

June 1, 1970



N 469, 213.88
 E 2,089, 933.64
 SW Corner
 Sec. 32-31-7
 6" x 6" conc. mon.
 1' N of fence post.
 Found by Scherer 6/1/70