

LINCOLN COUNTY U.S. PUBLIC LAND SURVEY MONUMENT LOCATION RECORD

CORNER NUMBER 2931714

SECTION 29

TOWNSHIP 31 NORTH

RANGE 7 EAST

PINE RIVER

CITY, VILLAGE, TOWN

SECTION



LOCATION
(Indicated By X)



LANDMARK BENCHMARK MEANDER CORNER

FOUND SET RESET RE-TIED

LINCOLN COUNTY COORDINATE: N: 108622.61
E: 402109.45

ELEVATION-(FEET): _____ DATUM: _____

WEATHER: MOSTLY CLOUDY

DATE OF SURVEY: 1-05-06 TEMPERATURE: 30 °F

SURVEY PARTY: NATHAN WINCENTSEN, KEITH WALKOWSKI

BASIS FOR MONUMENT LOCATION:

(DESCRIBE METHOD OF SURVEY AND CORNER AUTHENTICATION)

SEARCHED FOR THE MEANDER CORNER OF THE WEST 1/4 CORNER, FOUND NO EVIDENCE OF CORNER. CALCULATED THE WEST 1/4 CORNER BY EXTENDING THE MONUMENTED SOUTH LINE OF GOVERNMENT LOT 3, SECTION 30 WITH THE MONUMENTED EAST LINE OF GOVERNMENT LOT 1, SECTION 30 PER PREVIOUS SURVEYS OF RECORD. CALCULATED THE NORTHWEST CORNER BY EXTENDING SAID MONUMENTED EAST LINE OF GOVERNMENT LOT 1 WITH THE MONUMENTED NORTH LINE OF GOVERNMENT LOT 5 OF SECTION 29, SET BERNSTEN ON LINE BETWEEN CALCULATED WEST 1/4 CORNER AND THE NORTHWEST CORNER OF SECTION 29, AND PERPETUATED AS SHOWN BELOW.

FIELD BOOK NO. PINE RIVER PAGE NO. 51

COMPANY RIVERSIDE LAND SURVEYING LLC

CERTIFIED CORRECT:

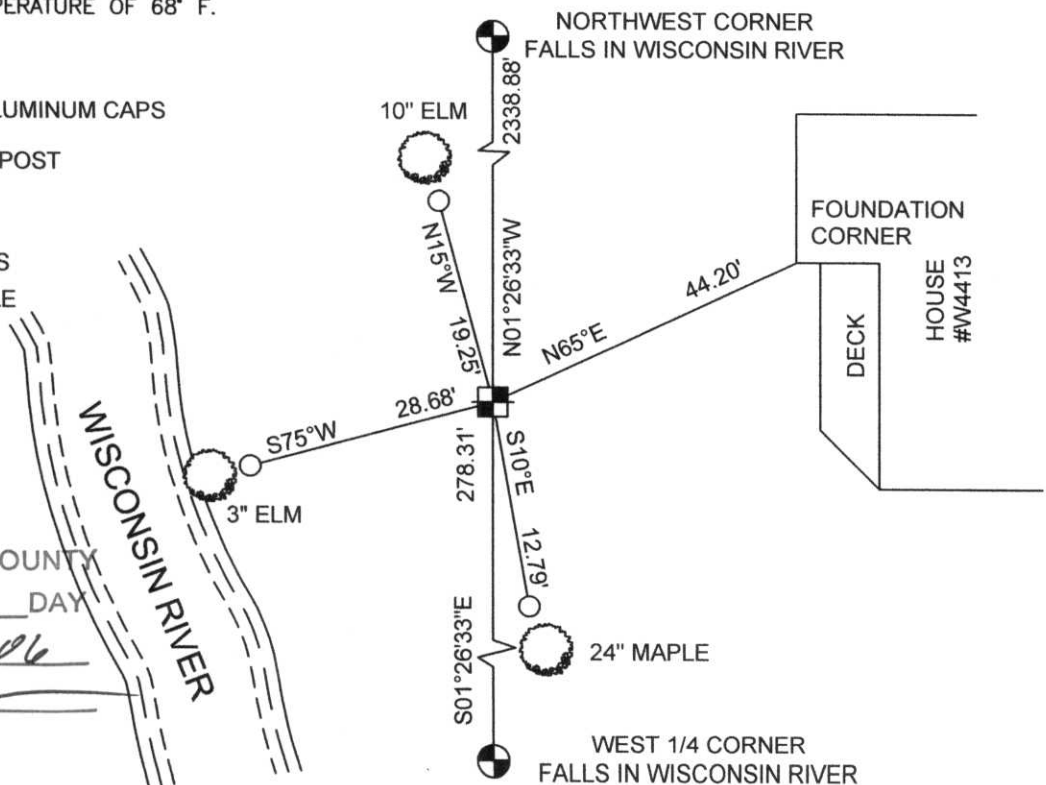
Keith J. Walkowski
KEITH J. WALKOWSKI
Registered Land Surveyor
DATE: Jan 6th, 2006

TIE SKETCH: SHOW MINIMUM OF FOUR (4) HORIZONTAL TIE DISTANCES TO FIXED WITNESS MONUMENTS. DESCRIBE ALL MONUMENTS FOUND OR SET. CORRECT ALL DISTANCES SHOWN TO STANDARD TEMPERATURE OF 68° F.

- SET BERNSTEN
- SET 3/4" REBAR WITH ALUMINUM CAPS
- VINYL SURVEY MARKER POST

NOTE

- ALL BEARINGS ARE FROM A HAND HELD MAGNETIC COMPASS
- THIS DRAWING IS NOT TO SCALE



RECEIVED BY LINCOLN COUNTY SURVEYOR THIS 6TH DAY OF January 20 06
Keith J. Walkowski
COUNTY SURVEYOR

R.S-5