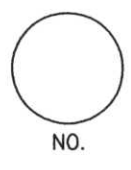
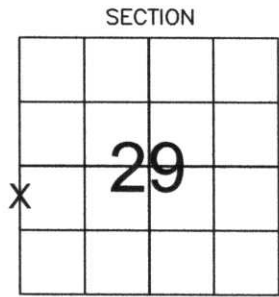


LINCOLN COUNTY U.S. PUBLIC LAND SURVEY MONUMENT LOCATION RECORD

CORNER NUMBER 2931717
 SECTION 29
 TOWNSHIP 31 NORTH
 RANGE 7 EAST
PINE RIVER
 CITY, VILLAGE, TOWN



LANDMARK BENCHMARK _____
 CORNER IDENTITY: _____ MEANDER CORNER FOUND SET
 _____ RESET
 _____ RE-TIED
 LINCOLN COUNTY COORDINATE: N: 107666.57
 E: 402094.54
 ELEVATION-(FEET): _____ DATUM: _____
 WEATHER: MOSTLY CLOUDY
 DATE OF SURVEY: 1-05-06 TEMPERATURE: 30 °F
 SURVEY PARTY: NATHAN WINCENTSEN, KEITH WALKOWSKI



BASIS FOR MONUMENT LOCATION: (DESCRIBE METHOD OF SURVEY AND CORNER AUTHENTICATION)

SEARCHED FOR THE MEANDER CORNER OF THE WEST 1/4 CORNER, FOUND NO EVIDENCE OF CORNER. CALCULATED THE WEST 1/4 CORNER BY EXTENDING THE MONUMENTED SOUTH LINE OF GOVERNMENT LOT 3, SECTION 30 WITH THE MONUMENTED EAST LINE OF GOVERNMENT LOT 1, SECTION 30 PER PREVIOUS SURVEYS OF RECORD. SET BERNSTEN ON LINE BETWEEN THE CALCULATED WEST 1/4 CORNER AND THE SOUTHWEST CORNER OF SECTION 29, AND PERPETUATED AS SHOWN BELOW.



FIELD BOOK NO. PINE RIVER PAGE NO. 49
 COMPANY RIVERSIDE LAND SURVEYING LLC

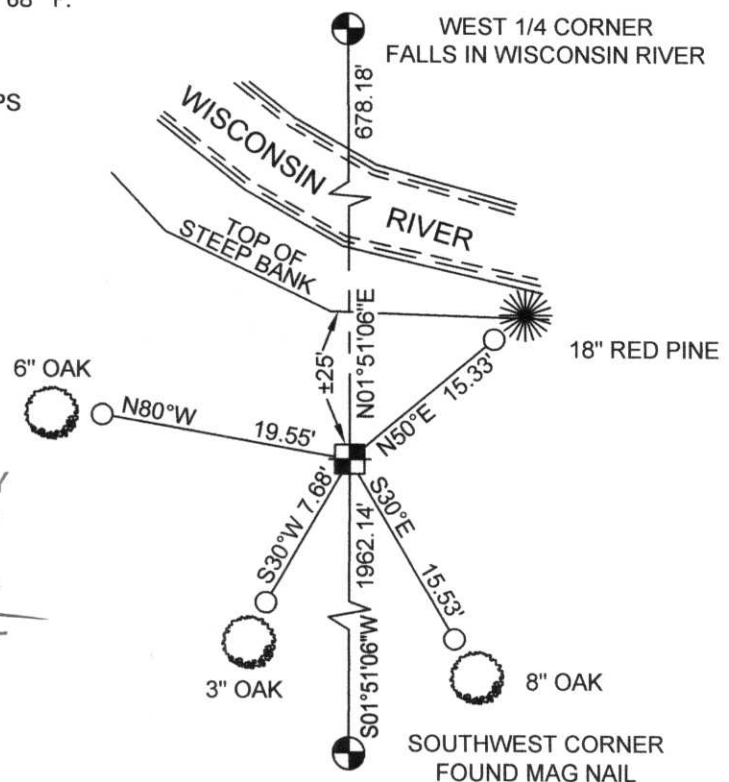
CERTIFIED CORRECT:
Keith J. Walkowski
KEITH J. WALKOWSKI
 Registered Land Surveyor
 DATE: Jan. 6TH, 2006

TIE SKETCH: SHOW MINIMUM OF FOUR (4) HORIZONTAL TIE DISTANCES TO FIXED WITNESS MONUMENTS. DESCRIBE ALL MONUMENTS FOUND OR SET. CORRECT ALL DISTANCES SHOWN TO STANDARD TEMPERATURE OF 68° F.

- SET BERNSTEN
- SET 3/4" REBAR WITH ALUMINUM CAPS
- VINYL SURVEY MARKER POST

NOTE

- ALL BEARINGS ARE FROM A HAND HELD MAGNETIC COMPASS
- THIS DRAWING IS NOT TO SCALE



RECEIVED BY LINCOLN COUNTY SURVEYOR THIS 6TH DAY OF January 20 06
Tony Walker
 COUNTY SURVEYOR

57-5