

LINCOLN COUNTY U.S. PUBLIC LAND SURVEY MONUMENT LOCATION RECORD

SECTION 34
TOWNSHIP 31 N
RANGE 7 E

U-15

LANDMARK BENCHMARK
CORNER IDENTITY: SMP NAIL

FOUND
SET
RESET
RE-TIED

PINE RIVER
CITY, VILLAGE, TOWN

INDEX NO.

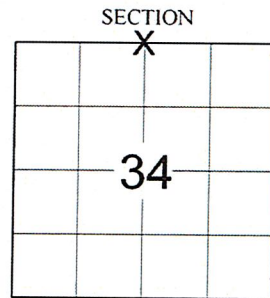
LINCOLN COUNTY COORDINATE: N: _____
E: _____

ELEVATION-(FEET): _____ DATUM: _____

WEATHER: CLOUDY & LIGHT DRIZZLE

DATE OF SURVEY: 7/26/2018 TEMPERATURE: 65 °F

SURVEY PARTY: KEITH WALKOWSKI / AUSTIN PELOT

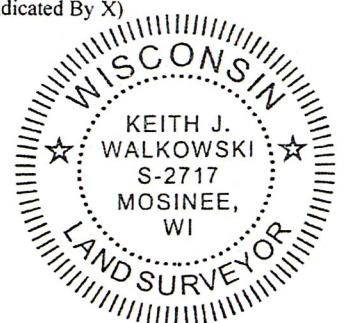


LOCATION
(Indicated By X)

BASIS FOR MONUMENT LOCATION:

(DESCRIBE METHOD OF SURVEY AND CORNER AUTHENTICATION)

SEARCHED FOR THE NORTH 1/4 CORNER AND COULD NOT FIND A CORNER MONUMENT. FOUND 4 TIES FROM THE 1974 TIE SHEET. THE TIE SHEET CALLS FOR BRASS CAP MONUMENTS IN CONCRETE, BUT ONLY FOUND BERNTSEN ALUMINUM MONUMENTS. 2 OF THE 4 TIES HAD TURNED TO A DETERIORATED BLUE COLOR. SET AN SMP NAIL FOR THE CORNER AND ADDED 3 NEW TIES TO PERPETUATE THE CORNER LOCATION AS SHOWN BELOW.



CERTIFIED CORRECT:

FIELD BOOK NO. NA PAGE NO. NA

COMPANY RIVERSIDE LAND SURVEYING LLC

Keith J. Walkowski

KEITH J. WALKOWSKI S-2717

Professional Land Surveyor

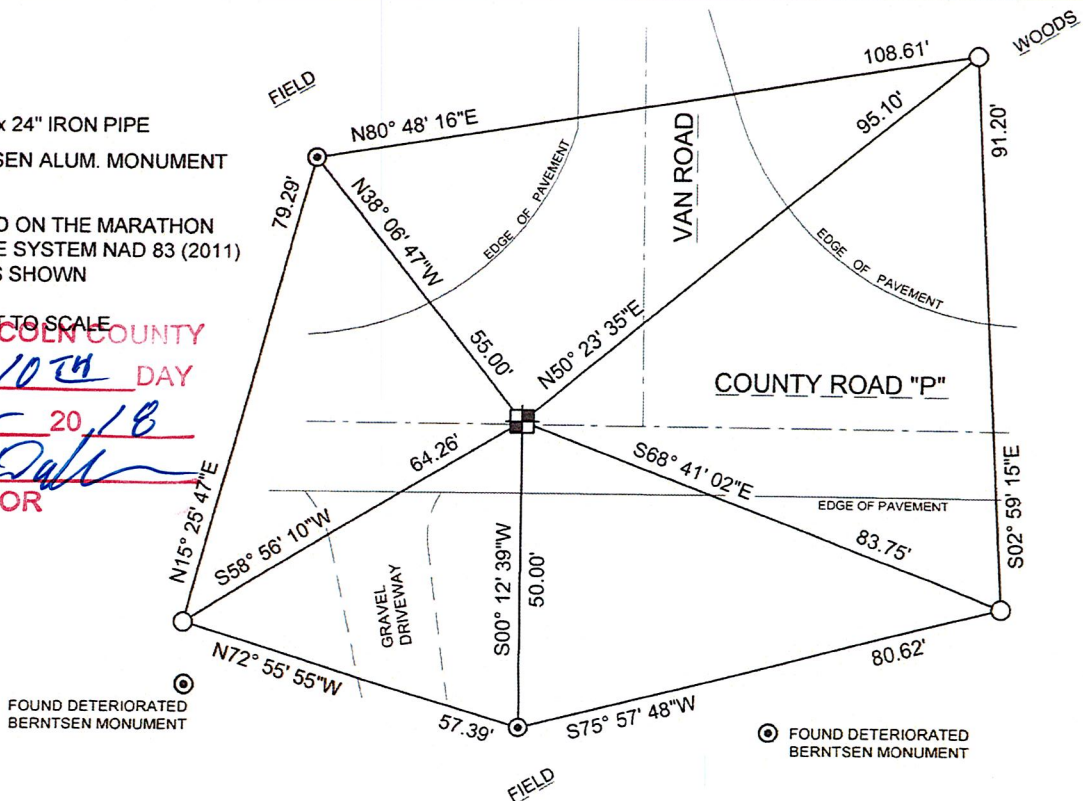
DATE: OCTOBER 10TH, 2018

TIE SKETCH:

- SET SMP NAIL
- SET 1-1/4" O.D. x 24" IRON PIPE
- FOUND BERNTSEN ALUM. MONUMENT

BEARINGS ARE BASED ON THE MARATHON COUNTY COORDINATE SYSTEM NAD 83 (2011) AND REFERENCED AS SHOWN

THIS DRAWING IS NOT TO SCALE
RECEIVED BY LINCOLN COUNTY
SURVEYOR THIS 10TH DAY
OF October 20, 18
Tony Dull
COUNTY SURVEYOR



U-15

INDEX NO.

U.S. PUBLIC LAND SURVEY MONUMENT RECORD

NOTE: This form is intended and designed to fulfill all requirements of Wisconsin Administrative Code, Chapter A-E 7.08 U.S. Public Land Survey Monument Record. An additional sheet may be added if necessary to conform with said requirements.

CORNER LOCATION

Quarter Corner common to Sections 27 and 34
Township 31 North, Range 7 East of the 4th P.M.
Town of Pine River, Lincoln County, Wisconsin

6	5	4	3	2	1
7	8	9	10	11	12
18	17	16	15	14	13
19	20	21	22	23	24
30	29	28	27	26	25
31	32	33	34	35	36

T31N - R7E

HISTORY OF ORIGINAL CORNER ESTABLISHMENT

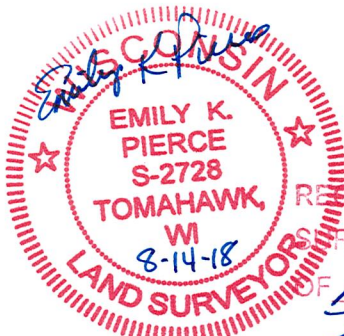
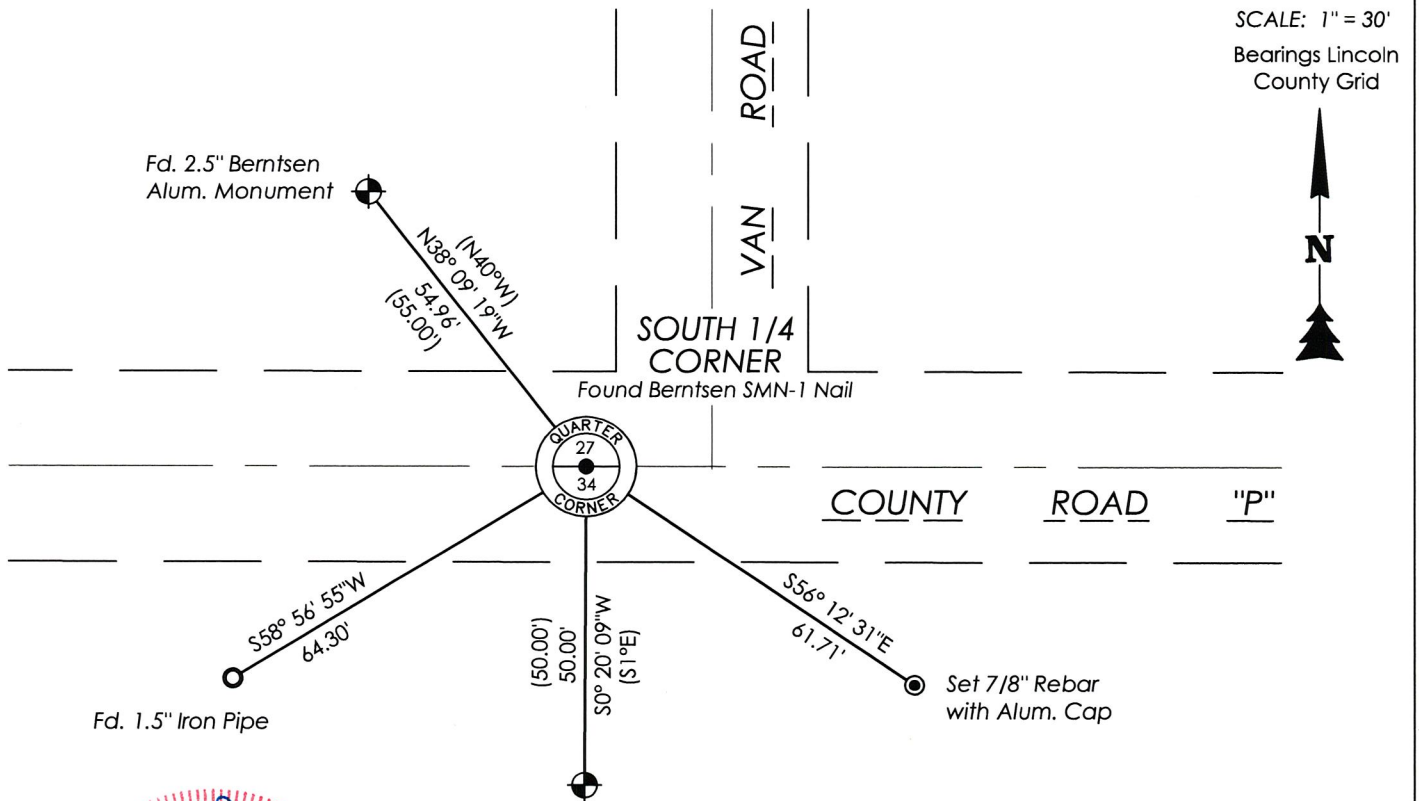
ORIGINAL SURVEYOR: A.G. Ellis
DATE OF SURVEY: Commenced Feb. 1852, Finished March 1852
ORIGINAL ACCESSORIES: At 39.78 ch, set post, sugar 18 inches
14" Sugar, S43°W, 19 links
20" Linden, N44°W, 23 links

DESCRIPTION OF MONUMENT FOUND AT THIS CORNER AND IF IT WAS ACCEPTED, STATE ALL EVIDENCE (MATERIAL, TESTIMONIAL, OCCUPATIONAL, PLATS, RECORDS, OTHER MONUMENTS) USED AS A BASIS FOR ACCEPTING. IF NOT ACCEPTED OR IF NOTHING WAS FOUND, STATE EVIDENCE USED AS BASIS FOR ESTABLISHING LOCATION. IF RE-ESTABLISHED THROUGH LOST CORNER PROPORTIONATE METHODS, INDICATE ALL MONUMENTS, DISTANCES AND DIRECTIONS USED TO ESTABLISH. INDICATE TYPE OF MONUMENT AND SIGN POST FOUND OR SET.

01/08/1974 Wisconsin Department of Transportation states corner is a brass cap set in concrete. Shows 4 brass caps set in concrete as ties to the corner location. No other history of perpetuation was provided.

8/02/2018 I visited corner location and found a Berntsen SMN-1 nail in the centerline of County Road "P", approximately 20 feet west of the centerline of Van Road. I found 2 Berntsen Aluminum monuments at the tie locations to the NW and to the S. I also found the remaining magnet and an aluminum powder at the location of the previous tie to the SE as shown on the 1974 tiesheet. Accepted the two existing Berntsen monuments as being the same ties that were identified as brass caps in concrete. Accepted Berntsen SMN-1 nail as being in the correct corner location as it fit the remaining ties well. I also found a 1.5" iron pipe to the SW and used it as a tie to the corner. Set a 7/8" rebar with cap to the SE to replace tie that only remnants remained.

PLAN VIEW OF CORNER WITH TIES TO AT LEAST 4 WITNESS MONUMENTS. IF IN DISAGREEMENT WITH PREVIOUSLY ESTABLISHED CORNER, SHOW THE DISTANCES BETWEEN THE TWO CORNERS AND ALSO INDICATE THE TIES TO THE DISPUTED.



RECEIVED BY LINCOLN COUNTY
SURVEYOR THIS 15TH DAY
August 2018
OF August
Emily K. Pierce
COUNTY SURVEYOR

I, Emily K. Pierce, Professional Land Surveyor No. S-2728, hereby certify that the corner location on this record was determined by me or under my direction and control and that this U.S. Public Land Survey Monument Record is correct and complete to the best of my knowledge and belief.

Emily K. Pierce
Emily K. Pierce, PLS No. S-2728
STEIGERWALDT LAND SURVEYING, LLC

U-15

122.

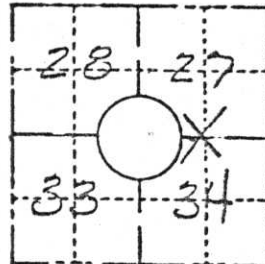
FIELD SURVEY NOTES

PRESERVATION OF LANDMARKS

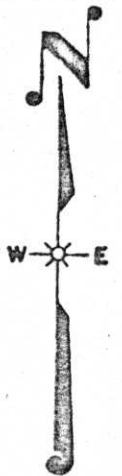
(Pursuant to Section 59.635(7) Wisconsin Statutes)

Wisconsin Department of Transportation
E-D-707-87

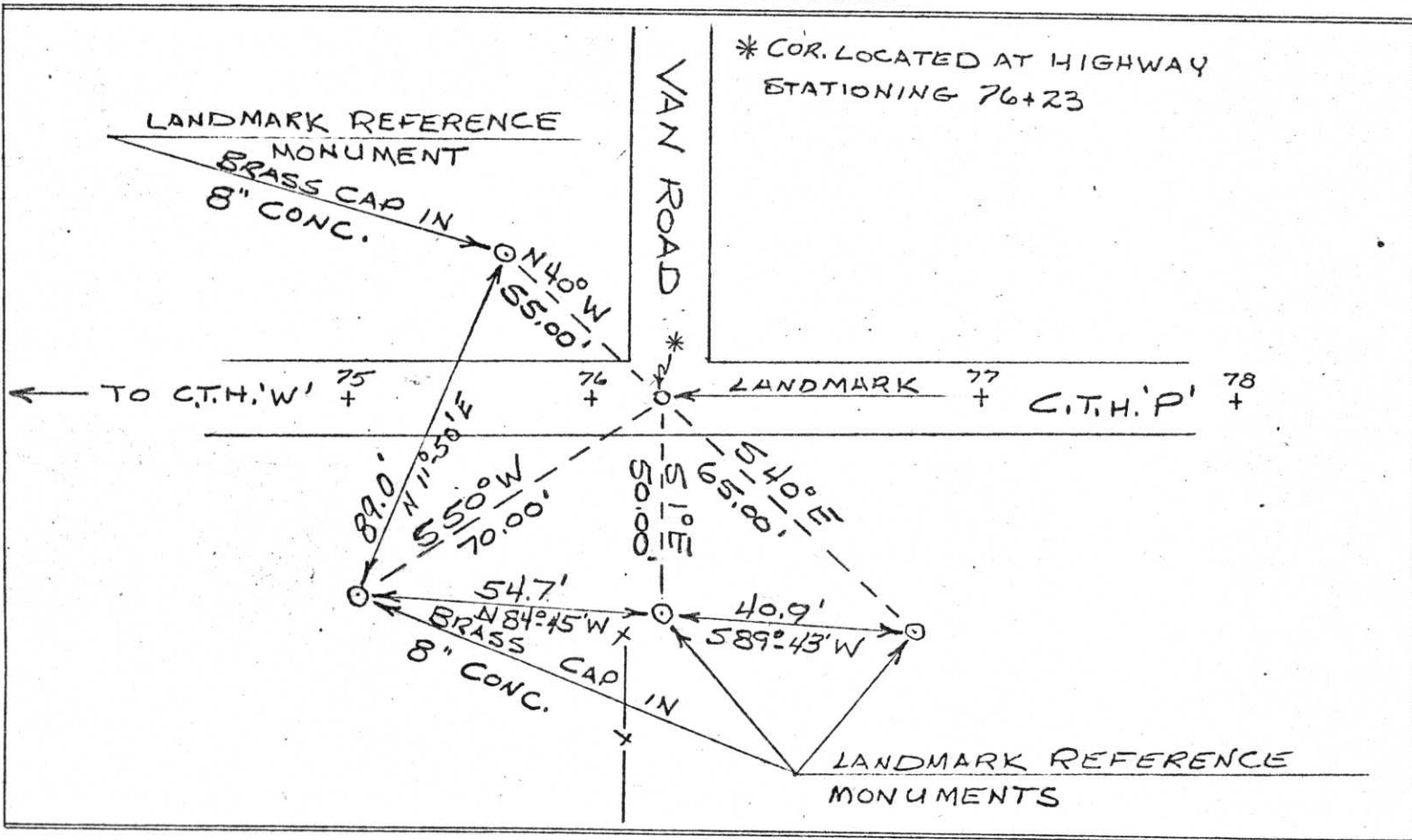
COUNTY LINCOLN		
TOWN PINE RIVER		
HIGHWAY COUNTY TRUNK 'P'		
SECTION 27	TOWNSHIP 31 N	RANGE 7 E
TYPE OF LANDMARK BRASS CAP SET IN CONC.		



LOCATION SKETCH
(Location of landmark indicated by "x")



This space for copy of field notes or ties to the above described landmarks



FILED UNDER PROJECT NUMBER 50569(7) 9424-1-70			COUNTY CLERK'S OFFICE COUNTY OF Lincoln WISCONSIN } 55	
SHC DISTRICT OFFICE NUMBER 7	CITY RHINELANDER	COUNTY ONEIDA	DATE RECEIVED FOR RECORD 1/8/74	DATE COPY SENT TO COUNTY SURVEYOR 1/8/74
LOCATED OR ESTABLISHED BY NAME Ann. Ners R.C.S. 0666			SIGNATURE OF COUNTY CLERK Ken Oldenberry	
TITLE DIST. CONST. ENGR. DATE 1/7/74				

PRESERVATION OF LANDMARKS

PAGE _____

RECEIVED
LINCOLN COUNTY
REGISTERED TAX DEPARTMENT

U-15