

U.S. PUBLIC LAND SURVEY MONUMENT RECORD

NOTE: THIS FORM IS INTENDED AND DESIGNED TO FULFILL ALL REQUIREMENTS OF WISCONSIN ADMINISTRATIVE CODE, CHAPTER A-E 7.08, U.S. PUBLIC LAND SURVEY MONUMENT RECORD (3)(a)(b)(c)(d)(e)(f)(g)(h)(i). ADDITIONAL SHEETS MAY BE NECESSARY TO CONFORM TO SAID REQUIREMENTS.

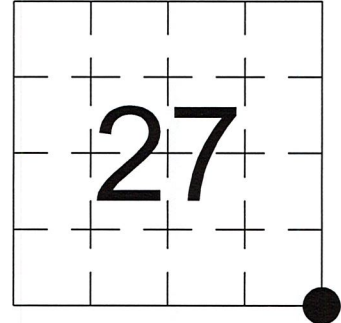
T 31 N, R 7 E

(a) CORNER LOCATION:

SOUTHEAST CORNER, SECTION 27
 TOWNSHIP 31 NORTH
 RANGE 7 EAST
 TOWN OF PINE RIVER
 LINCOLN COUNTY
 WISCONSIN

(b) HISTORY OF ORIGINAL CORNER:

ORIGINAL SURVEYOR: See Previous Tie Sheet
 COMMENCING DATE:
 COMPLETION DATE:
 ORIGINAL BEARING TREES:



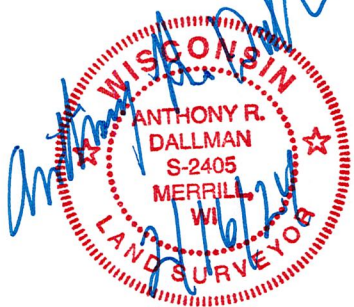
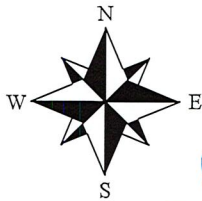
(f)(g)(h) DESCRIPTION OF MONUMENT FOUND AT THIS CORNER AND IF IT WAS ACCEPTED. STATE ALL EVIDENCE (MATERIAL, TESTIMONIAL, OCCUPATIONAL, PLATS, RECORDS, OTHER MONUMENTS) USED AS A BASIS FOR ESTABLISHING LOCATION. IF RE-ESTABLISHING THROUGH LOST CORNER PROPORTIONATE METHODS, INDICATE ALL MONUMENTS, DISTANCES, AND DIRECTIONS USED TO ESTABLISH. INDICATE TYPE OF MONUMENTS FOUND OR SET.

1/07/1974, Arvin Hess, set Brass Cap in Concrete.

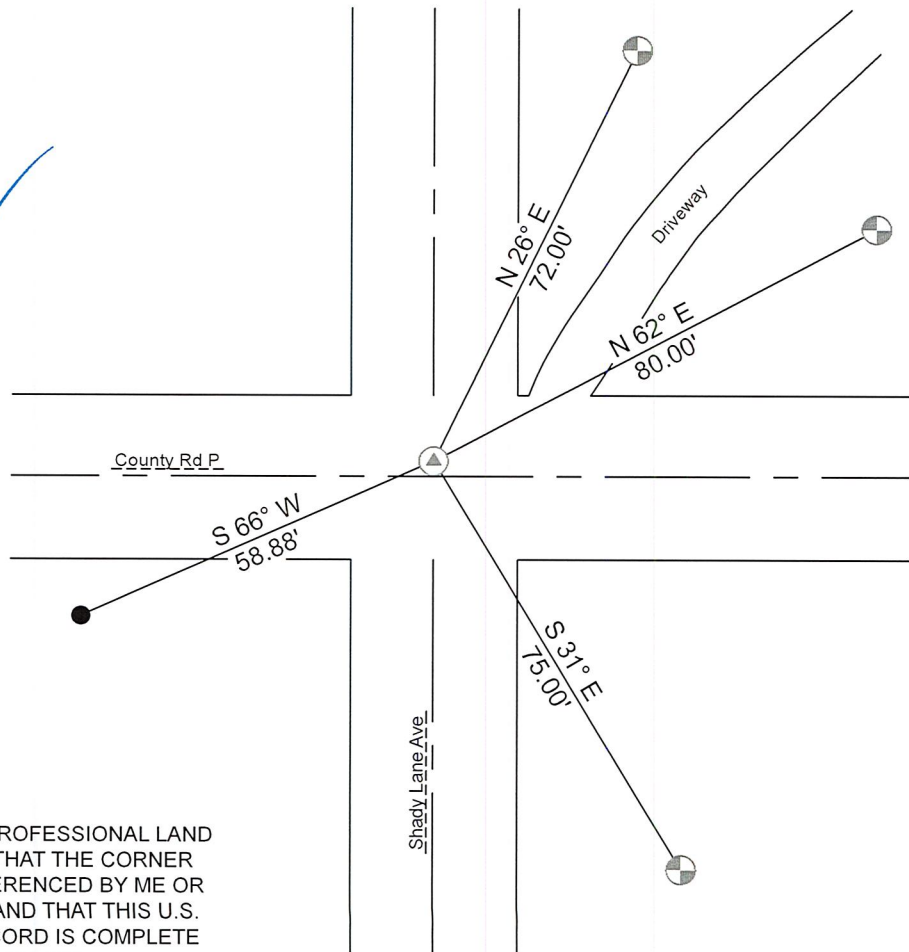
10/04/2023, I, Anthony R. Dallman, PLS-2405, found 3 of 4 existing witness monuments that match a PK Nail that is 1' North of the centerline intersection. I accepted this location and set a witness monument, as shown in the sketch below, to further perpetuate the corner location.

(c)(d)(e) PLAN VIEW OF THE CORNER WITH TIES TO AT LEAST FOUR WITNESSES. IF IN DISAGREEMENT WITH PREVIOUSLY ESTABLISHED CORNER, SHOW THE DISTANCES BETWEEN THE TWO CORNERS AND ALSO THE TIES TO THE DISPUTED CORNER.

- Tie bearings by hand-held compass.
- Tie distances by steel tape.
- Not to scale.



- Berntsen Monument
- Capped Rebar symbol: a solid black circle.



I, ANTHONY R. DALLMAN, WISCONSIN PROFESSIONAL LAND SURVEYOR, S-2405, HEREBY CERTIFY THAT THE CORNER LOCATION ON THIS RECORD WAS REFERENCED BY ME OR UNDER MY DIRECTION AND CONTROL AND THAT THIS U.S. PUBLIC LAND SURVEY MONUMENT RECORD IS COMPLETE TO THE BEST OF MY KNOWLEDGE AND BELIEF.

Anthony R. Dallman 02/16/24
 ANTHONY R. DALLMAN, PLS S-2405

INDEX NO. U-17

43107270000

43107270000_Mon-N



43107270000_North



43107270000_West



43107270000_South



43107270000_East

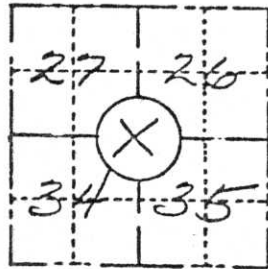


121.

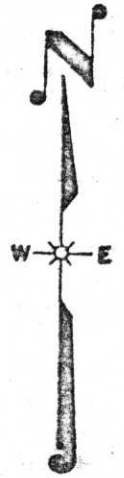
FIELD SURVEY NOTES
PRESERVATION OF LANDMARKS
 (Pursuant to Section 59.635(7) Wisconsin Statutes)

Wisconsin Department of Transportation
 E-D-70747

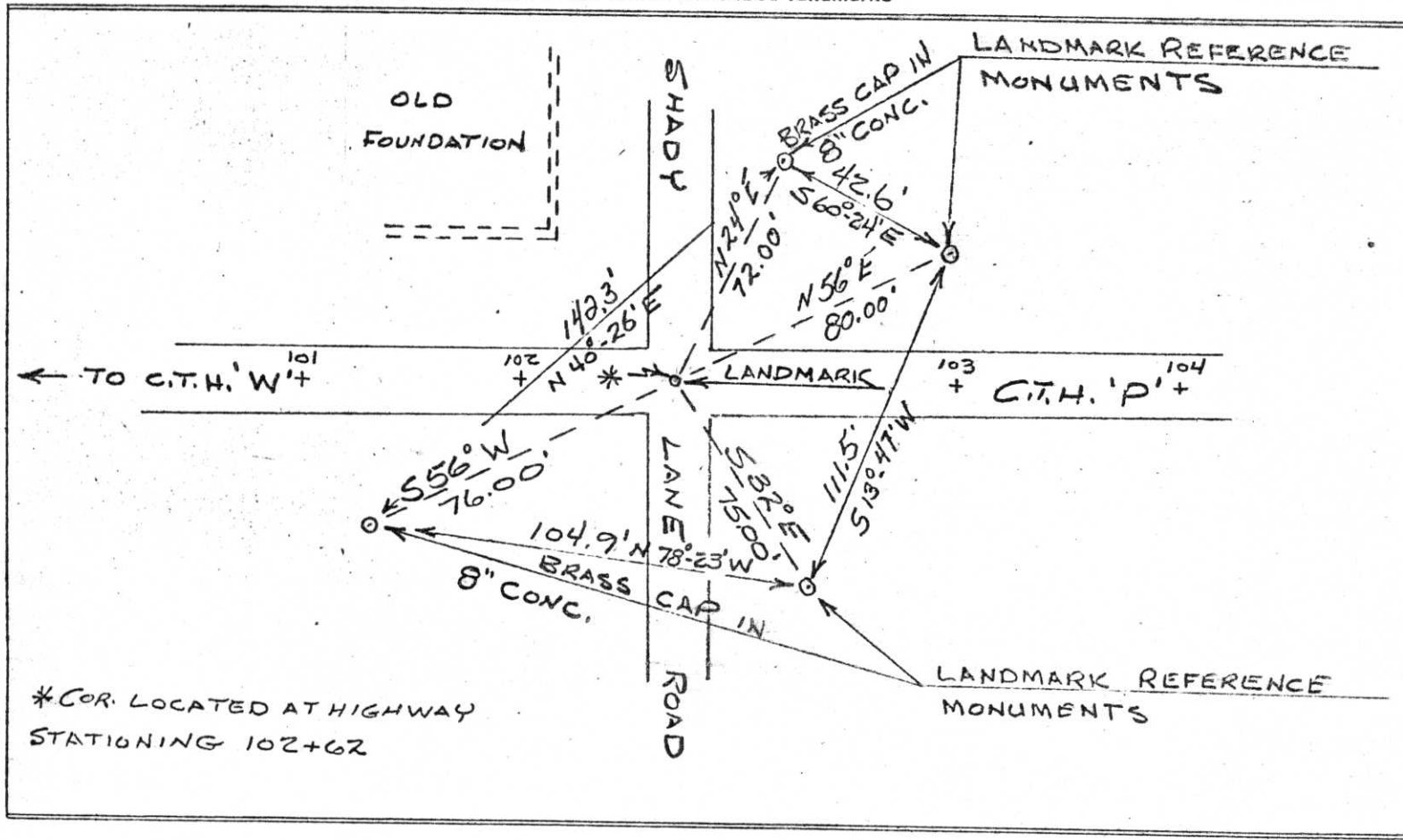
COUNTY LINCOLN		
TOWN PINE RIVER		
HIGHWAY COUNTY TRUNK 'P'		
SECTION 27	TOWNSHIP 31N	RANGE 7E
TYPE OF LANDMARK BRASS CAP SET IN CONC.		



LOCATION SKETCH
 (Location of landmark indicated by "x")



This space for copy of field notes or ties to the above described landmarks



*COR. LOCATED AT HIGHWAY
 STATIONING 102+62

FILED UNDER PROJECT NUMBER 50569(7) 9424-1-70		COUNTY CLERK'S OFFICE COUNTY OF Lincoln WISCONSIN } 55	
SHC DISTRICT OFFICE NUMBER 7	CITY RHINELANDER	COUNTY ONEIDA	DATE RECEIVED FOR RECORD 1/8/74
LOCATED OR ESTABLISHED BY NAME Am. West RCS 066C		DATE COPY SENT TO COUNTY SURVEYOR 1/8/74	
TITLE Dist Const. Engr. DATE 1/2/74		SIGNATURE OF COUNTY CLERK Ken Olden	

RECEIVED
 LINCOLN COUNTY
 FORESTRY TAX DEPARTMENT

4-17