

U.S. PUBLIC LAND SURVEY MONUMENT RECORD

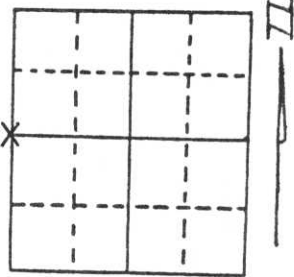
Note: This form is intended and designed to fulfill all requirements of Wisconsin Administrative Code, Chapter A-E 5.02, U.S. Public Land Survey Monument Record (3) (a) (b) (c) (d) (e) (f) (g) (h) (i). An additional sheet may be added if necessary to conform with said requirements.

(a) Corner location: Township 31 North

Range 7 East

Town/City/Village [REDACTED] PINE RIVER

County LINCOLN

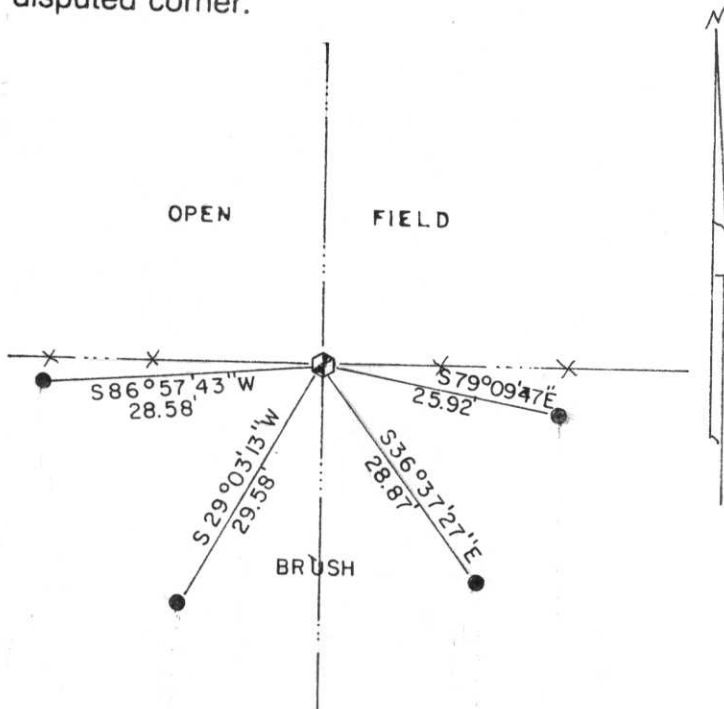


Section 25

(b) (f) (g) (h) Description of monument found at this corner and if it was accepted, state all evidence (material, testimonial, occupational, plats, records, other monuments) used as a basis for accepting. If not accepted or if nothing was found, state evidence used as basis for establishing location. If reestablished through lost corner proportionate methods, indicate all monuments, distances and directions used to establish.

This corner is an existing 3/4" Solid Iron Bar. It was shown to us by long time resident Martin Lueck. He told us that this was the point that the neighbors built their share of line fence up to. It is a very rocky area and this bar was in a indentation that might once have been the location of the Stone Monument. Tied into Section 25 survey and accepted as best evidence for corner. Left bar intact because rocky location and tied out. Placed special County orange Witness Post alongside corner.

(c) (d) (e) Plan view of corner with ties to at least 4 witness monuments. If in disagreement with previously established corner, show the distances between the two corners and also indicate the ties to the disputed corner.



All ties 7/8" x 30" Iron Re-bars with caps.
 From W¹/₄ Cor. to SW Cor. S0°16'19"E, 2640.52'
 From W¹/₄ Cor. to E¹/₄ Cor. N89°15'57"E, 5314.79'

RECEIVED AT LINCOLN COUNTY COURTHOUSE THIS 22 DAY OF August 1995
[Signature]
TAX DESCRIPTION OFFICE

(i) I, Gary R. Krueger RLS NO.1619

(type or print name) certify that the corner location on this record was determined by me or under my direction and control and that this U.S. Public Land Survey Monument Record is correct and complete to the best of my knowledge and belief.

Gary R. Krueger 8-20-95
 Signature Date



Index No. 5-21