

U.S. PUBLIC LAND SURVEY MONUMENT RECORD

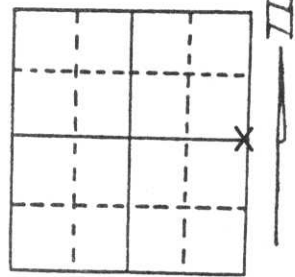
Note: This form is intended and designed to fulfill all requirements of Wisconsin Administrative Code, Chapter A-E 5.02, U.S. Public Land Survey Monument Record (3) (a) (b) (c) (d) (e) (f) (g) (h) (i). An additional sheet may be added if necessary to conform with said requirements.

(a) Corner location: Township 31 North

Range 7 East

Town/City/Village ██████████ PINE RIVER

County LINCOLN ██████████



Section 25

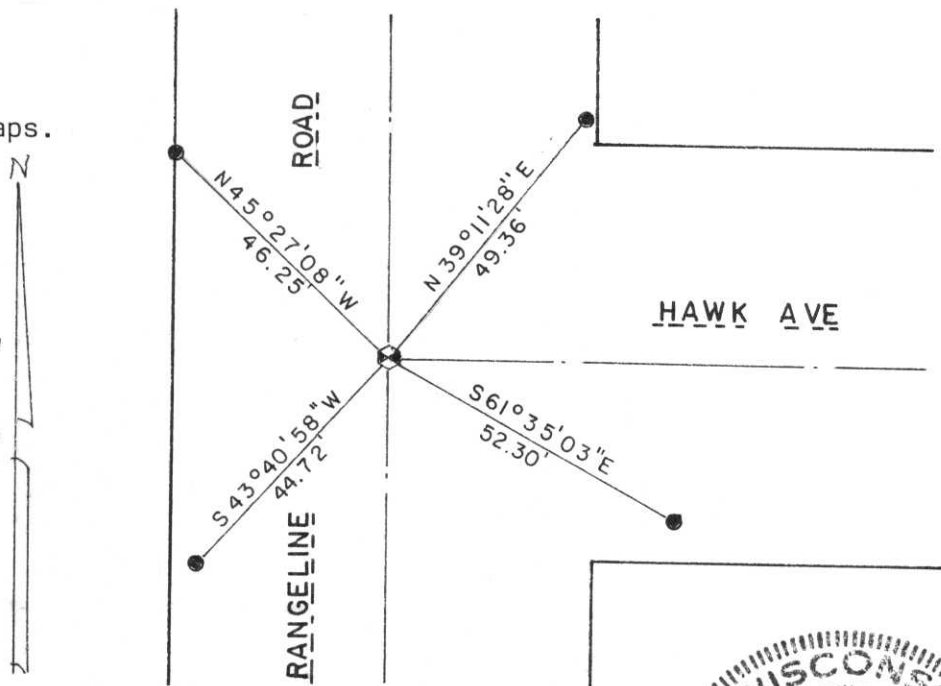
(b) (f) (g) (h) Description of monument found at this corner and if it was accepted, state all evidence (material, testimonial, occupational, plats, records, other monuments) used as a basis for accepting. If not accepted or if nothing was found, state evidence used as basis for establishing location. If reestablished through lost corner proportionate methods, indicate all monuments, distances and directions used to establish.

Dug hole 9' wide North and South and 11' wide East and West and 4' deep. Found no evidence of corner. Set temporary point at centerline of Range Line Road and Hawk Road to the East. Tied to forty fences North and South and fence off the road into the West. Location fit very well with all location work. Accepted as best location for corner. Set Berntsen Monument at this location and tied out.

**RECEIVED AT LINCOLN COUNTY
COURTHOUSE THIS 22 DAY
OF August 19 95.
Pat Riebel
TAX DESCRIPTION OFFICE**

(c) (d) (e) Plan view of corner with ties to at least 4 witness monuments. If in disagreement with previously established corner, show the distances between the two corners and also indicate the ties to the disputed corner.

All ties 7/8" x 30"
Iron Re-bars with caps.
Special County
Witness Post put
alongside one of
the ties.
From E 1/4 Cor. to
SE Cor.
S0°49'07"E, 2644.04'
From E 1/4 Cor. to
NE Cor.
N0°10'26"E, 2632.53'



(i) I, Gary R. Krueger RLS NO.1619
(type or print name) certify that the corner location on this record was determined by me or under my direction and control and that this U.S. Public Land Survey Monument Record is correct and complete to the best of my knowledge and belief.

Gary R. Krueger
Signature

Date



Index No. 5-25