

U.S. PUBLIC LAND SURVEY MONUMENT RECORD

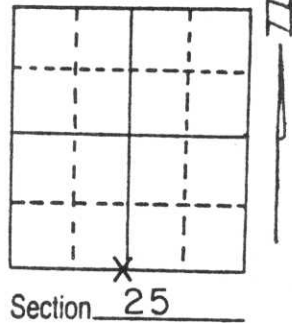
Note: This form is intended and designed to fulfill all requirements of Wisconsin Administrative Code, Chapter A-E 5.02, U.S. Public Land Survey Monument Record (3) (a) (b) (c) (d) (e) (f) (g) (h) (i). An additional sheet may be added if necessary to conform with said requirements.

(a) Corner location: Township 31 North

Range 7 East

Town/City/Village [REDACTED] PINE RIVER

County LINCOLN

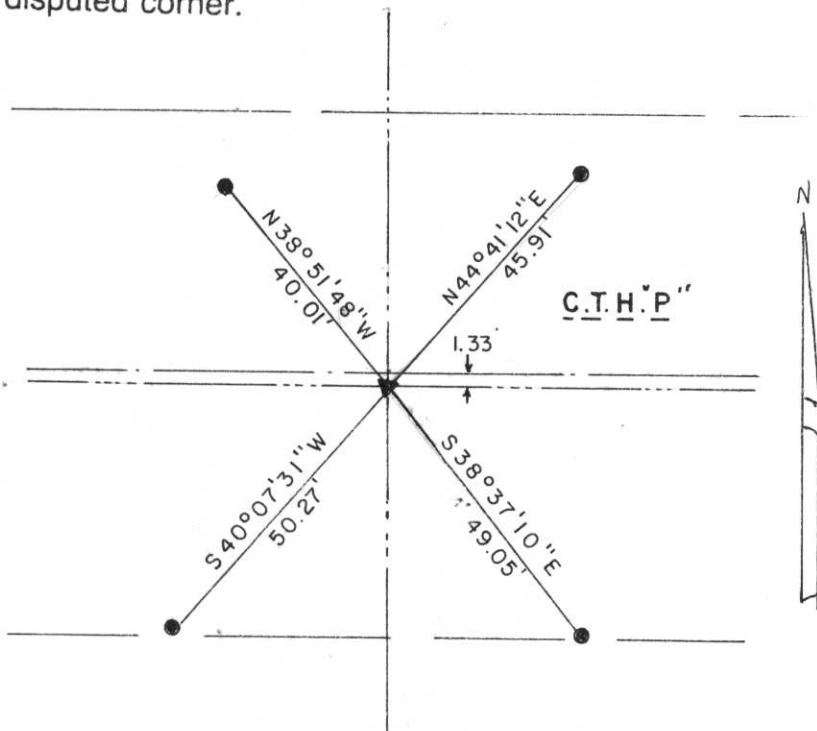


(b) (f) (g) (h) Description of monument found at this corner and if it was accepted, state all evidence (material, testimonial, occupational, plats, records, other monuments) used as a basis for accepting. If not accepted or if nothing was found, state evidence used as basis for establishing location. If reestablished through lost corner proportionate methods, indicate all monuments, distances and directions used to establish.

This corner was found and replaced by Francis Fox in 1974. Two ties were remaining but very unstable. Re-tied corner because of the need to update.

**RECEIVED AT LINCOLN COUNTY
COURTHOUSE THIS 22 DAY
OF August 1995
Pat Ruelke
TAX DESCRIPTION OFFICE**

(c) (d) (e) Plan view of corner with ties to at least 4 witness monuments. If in disagreement with previously established corner, show the distances between the two corners and also indicate the ties to the disputed corner.



All ties are 7/8" x 30" Iron Re-bars with caps. Lath placed by irons with Witness Corners written on them. The tie to the Southwest has a special County Witness Post alongside. See a Railroad Spike for corner.

From S $\frac{1}{4}$ Cor. to the SW Cor.
S89°18'28"W, 2666.68'

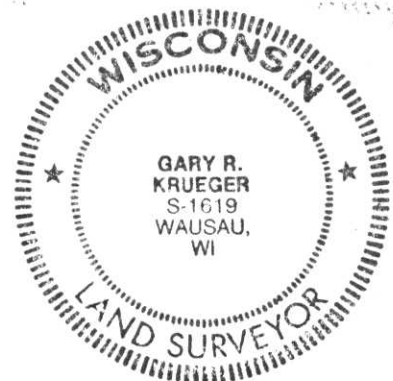
From S $\frac{1}{4}$ Cor. to the SE Cor.
N89°18'03"E, 2673.31'

(i) I, Gary R. Krueger RLS NO.1619

(type or print name) certify that the corner location on this record was determined by me or under my direction and control and that this U.S. Public Land Survey Monument Record is correct and complete to the best of my knowledge and belief.

Gary R. Krueger
Signature

8-20-95
Date



Index No. U-23

CERTIFIED LAND CORNER RESTORATION

Index No. U-23

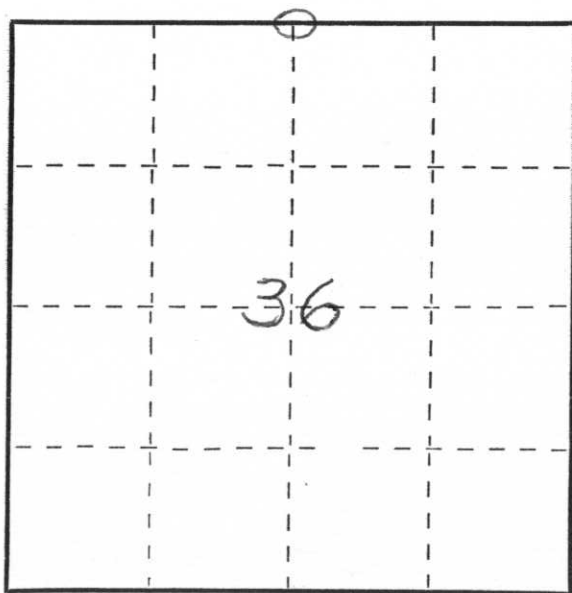
State of Wisconsin }
County of LINCOLN } ss.

History of original corner establishment:
OLD GRANITE STONE

I FRANCIS X FOX, do hereby certify that on the 31ST day of OCTOBER, 1974, I found evidence of the N 1/4 corner of SECTION 36 Township 31, North, Range 7 EAST, Fourth, Principal Meridian, as described hereon; and that from this evidence I established a new monument and accessories as described hereon to perpetuate the original location of this corner.

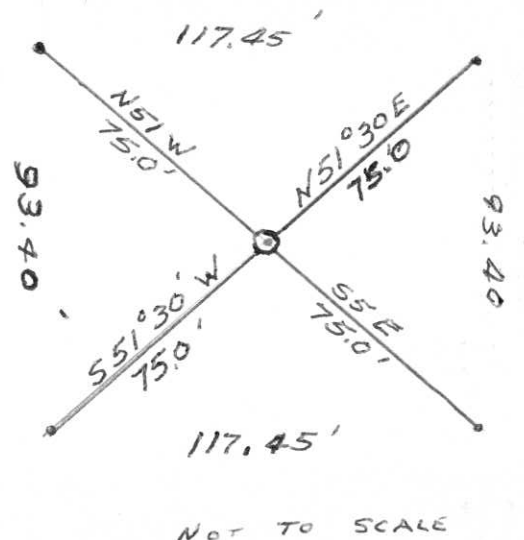
Resident witnesses:

.....
.....
.....



○ = Corner monument restored.

Description of corner evidence found:
OLD GRANITE STONE



Description of monument and accessories I established to perpetuate the original location of this corner.

PLACED STANDARD ALUMINUM CORNER MARKER (WIS. DEPT. TRANSPORTATION FURNISHED) IN BLACK TOP SURFACE. PLACED 4 WITNESS MARKERS (LINCOLN COUNTY FURNISHED) AS SHOWN
CENTER LINE OF HIGHWAY (AS CONSTRUCTED 1974)
IS 1.33' NORTH OF CORNER

Dated at MERRILL, Wis., this 31ST day of OCT, 1974.

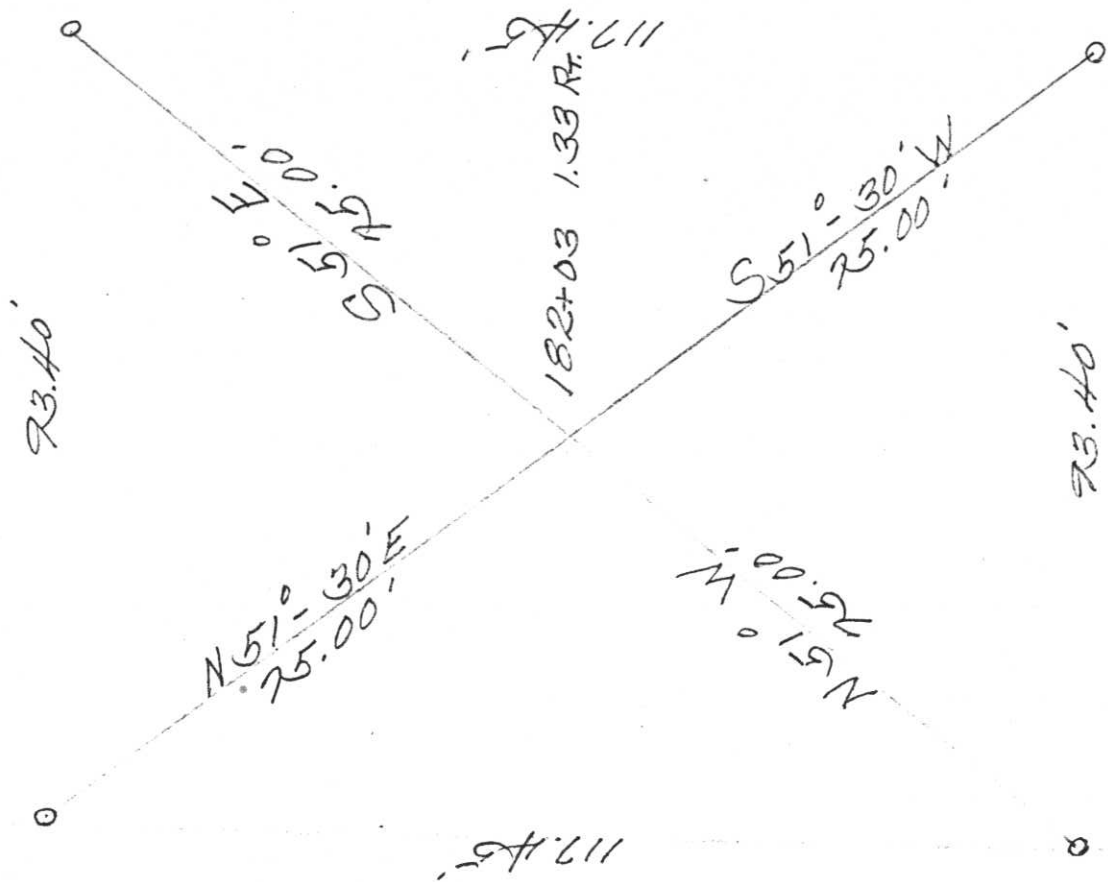
Signature Francis X Fox Title SURVEYOR Registration No. S.0046
(County Surveyor, Registered Land Surveyor, or other duly authorized official)

Office of Register of Deeds, County of....., I hereby certify that the within instrument was filed in this office for record on the..... day of....., 19..... at..... o'clock..... M..

.....
(Register of Deeds)

By..... Deputy

135.



75
56
25

U-23

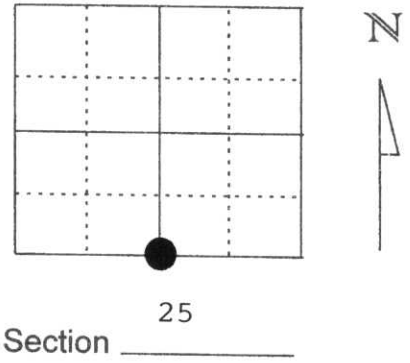
Corner on Hwy P
Found by Francis Fox - 1974

31-7

U.S. PUBLIC LAND SURVEY MONUMENT RECORD

Note: This form is intended and designed to fulfill all requirements of Wisconsin Administrative Code, Chapter A-E 5.02, U.S. Public Land Survey Monument Record (3) (a) (b) (c) (d) (e) (f) (g) (h) (l). An additional sheet may be added if necessary to conform with said requirements.

(a) Corner location: Township 31 North
 Range 7 East
 Town/City/Village TN. OF PINE RIVER
 County Lincoln

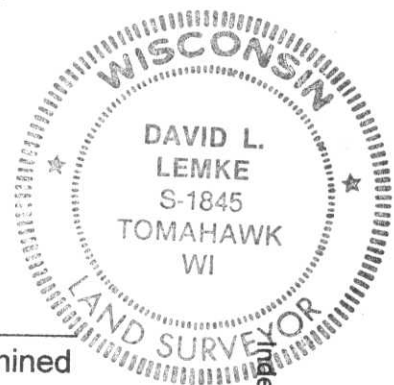
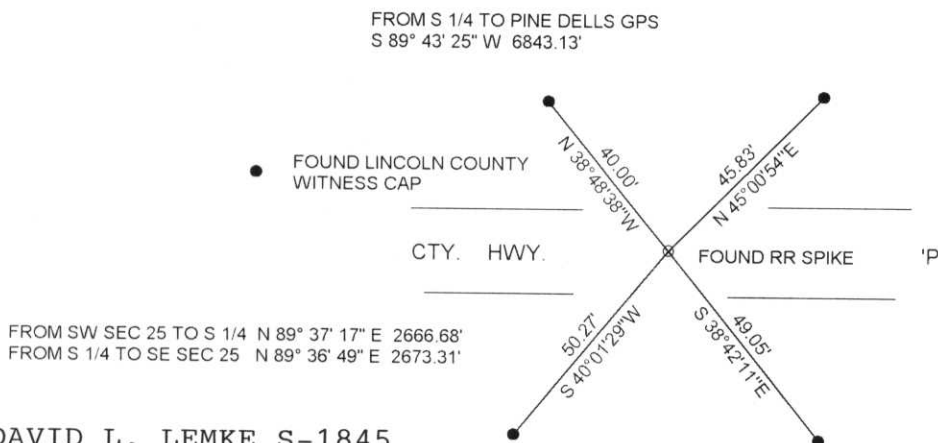


(b) (f) (g) (h) Description of monument found at this corner and if it was accepted, state all evidence (material, testimonial, occupational, plats, records, other monuments) used as a basis for accepting. If not accepted or if nothing was found, state evidence used as basis for establishing location. If reestablished through lost corner proportionate methods, indicate all monuments, distances and directions used to establish.

- 1974 CORNER RE-ESTABLISHED BY FRANCIS FOX
- AUGUST 1995 CORNER POSITION AND WITNESS MONUMENTS RESET BY GARY KRUEGER. TIE SHEET FILED 8/20/95
- MAY 1998 I FOUND ALL MONUMENTS SET BY GARY KRUEGER IN PLACE AND IN GOOD CONDITION.

RECEIVED AT LINCOLN COUNTY
 COURTHOUSE THIS 3rd DAY
 OF June 1998
Pat Priebe
 TAX DESCRIPTION OFFICE

(c) (d) (e) Plan view of corner with ties to at least 4 witness monuments. If in disagreement with previously established corner, show the distances between the two corners and also indicate the ties to the disputed corner.



(l) I, DAVID L. LEMKE S-1845
 (type or print name) certify that the corner location on this record was determined by me or under my direction and control and that this U.S. Public Land Survey Monument Record is correct and complete to the best of my knowledge and belief.
 Signature *David L. Lemke* Date JUN. 03 1998

Index No. 4-23