

U.S. PUBLIC LAND SURVEY MONUMENT RECORD

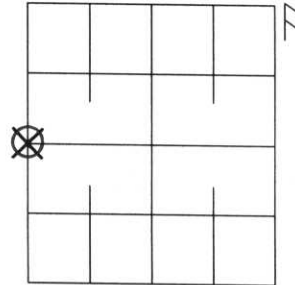
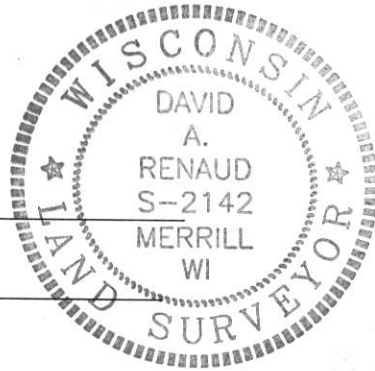
Note: This form is intended and designed to fulfill all requirements of Wisconsin Administrative Code, Chapter A-E 5.02, U.S. Public Land Survey Monument Record (3)(a)(b)(c)(d)(e)(f)(g)(h)(i). An additional sheet may be added if necessary to conform with said requirements.

(a) Corner location: Township 31 North

Range 8 East

Town/City/Village PINE RIVER

County LINCOLN

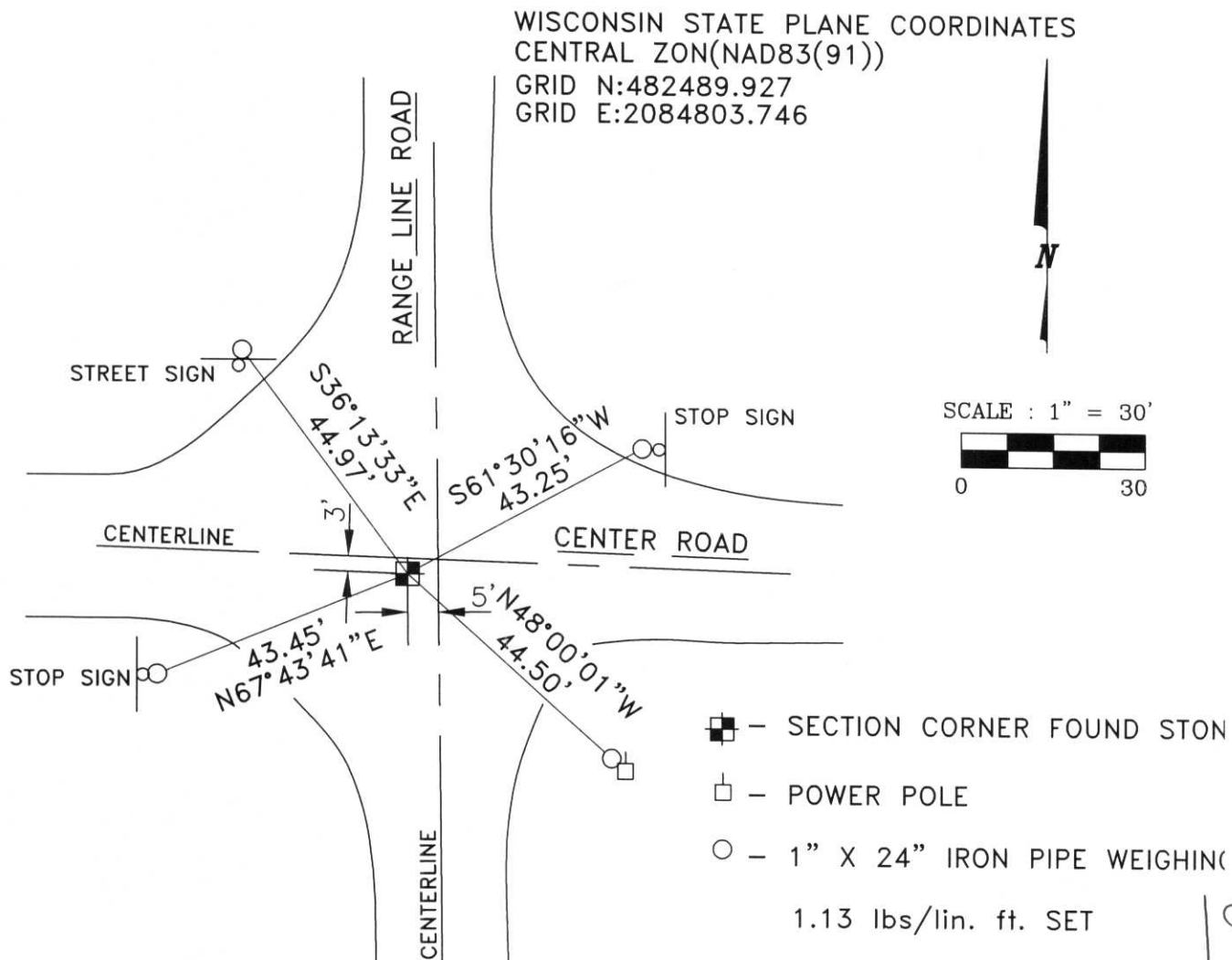


Section 19

(b)(f)(g)(h) Description of monument found at this corner and if it was accepted, state all evidence (material, testimonial, occupational, plats, records, other monuments) used as a basis for accepting. If not accepted or if nothing was found, state evidence used as basis for establishing location. If reestablished through lost corner proportionate methods, indicate all monuments, distances and directions used to establish.

I DUG AT THE INTERSECTIONS OF THE CENTERLINES OF RANGE LINE ROAD AND CENTER ROAD AND FOUND A GRANITE STONE AS SHOWN BELOW. I ACCEPTED THIS STONE AS THE BEST AVAILABLE EVIDENCE OF THE ORIGINAL LOCATION OF THE CORNER.

(c)(d)(e) Plan view of corner with ties to at least 4 witness monuments. If in disagreement with previous established corner, show the distances between the two corners and also indicate the ties to the disputed corner.



(i) I, DAVID A. RENAUD, WI RLS S-2142

certify that the corner location on this record was determined by me or under my direction and control and that this U.S. Public Land Survey Monument Record is correct and complete to the best of my knowledge and belief.

David A. Renaud
Signature

11/2/99
Date

RECEIVED AT LINCOLN COUNTY
COURTHOUSE THIS 3rd DAY
OF Nov 19 99
Pat Priebe
LAND INFORMATION OFFICE