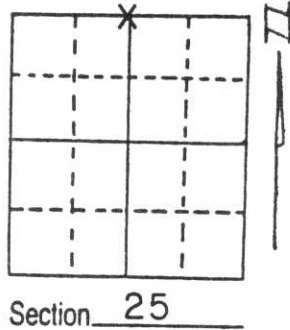


U.S. PUBLIC LAND SURVEY MONUMENT RECORD

Note: This form is intended and designed to fulfill all requirements of Wisconsin Administrative Code, Chapter A-E 5.02, U.S. Public Land Survey Monument Record (3) (a) (b) (c) (d) (e) (f) (g) (h) (i). An additional sheet may be added if necessary to conform with said requirements.

(a) Corner location: Township 31 North
 Range 7 East

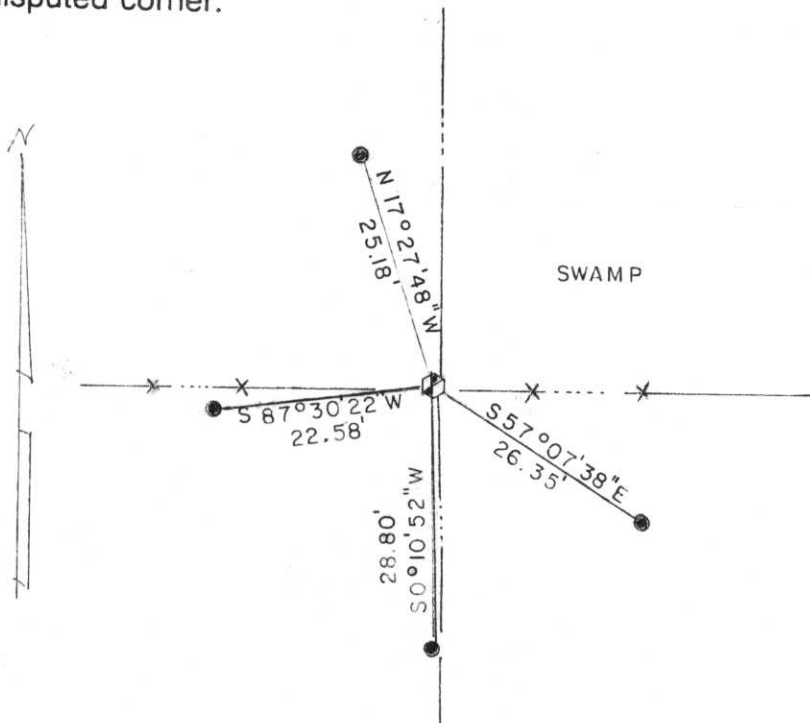
Town/City/Village _____ PINE RIVER _____
 County LINCOLN _____



(b) (f) (g) (h) Description of monument found at this corner and if it was accepted, state all evidence (material, testimonial, occupational, plats, records, other monuments) used as a basis for accepting. If not accepted or if nothing was found, state evidence used as basis for establishing location. If reestablished through lost corner proportionate methods, indicate all monuments, distances and directions used to establish.

Found an old pointed wood post at fence intersection after following barb wire in from the East through this swamp. Alongside this post in the mud lay Granite Stone Monument. We feel the pointed post was the location of the Stone that was removed for precise fencing or the post was there first as the Stone was set alongside. We accepted the post and replaced with a Berntsen Monument. We left the Stone lay right where it was. Placed Special County orange Witness Post alongside corner.

(c) (d) (e) Plan view of corner with ties to at least 4 witness monuments. If in disagreement with previously established corner, show the distances between the two corners and also indicate the ties to the disputed corner.



All ties to 7/8" x 30" Iron Re-bars with caps.
 From N $\frac{1}{4}$ Cor. to the NE Cor. N89°45'26"E, 2678.60'
 From N $\frac{1}{4}$ Cor. to the S $\frac{1}{4}$ Cor. S0°22'52"E, 5297.67'

RECEIVED AT LINCOLN COUNTY
 COURTHOUSE THIS 22 DAY
 OF August 1995
Pat Rieker
 TAX DESCRIPTION OFFICE

(i) I, Gary R. Krueger RLS NO. 1619
 (type or print name) certify that the corner location on this record was determined by me or under my direction and control and that this U.S. Public Land Survey Monument Record is correct and complete to the best of my knowledge and belief.



Gary R. Krueger _____
 Signature Date 8-20-95

Index No. 9-23





