

# LINCOLN COUNTY U.S. PUBLIC LAND SURVEY MONUMENT LOCATION RECORD

CORNER NUMBER 263173

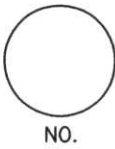
SECTION 26

TOWNSHIP 31 NORTH

RANGE 7 EAST

PINE RIVER

CITY, VILLAGE, TOWN



LANDMARK  BENCHMARK \_\_\_\_\_ FOUND  SET   
 CORNER IDENTITY: \_\_\_\_\_ NORTHEAST CORNER RESET   
 RE-TIED

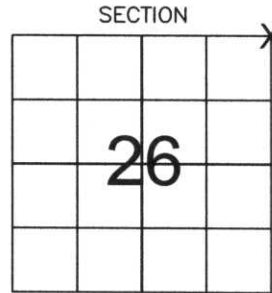
LINCOLN COUNTY COORDINATE: N: 110973.18  
 E: 423163.37

ELEVATION-(FEET): \_\_\_\_\_ DATUM: \_\_\_\_\_

WEATHER: PARTLY CLOUDY

DATE OF SURVEY: 12-22-05 TEMPERATURE: 25 °F

SURVEY PARTY: NATHAN WINCENTSEN, KEITH WALKOWSKI



LOCATION (Indicated By X)



## BASIS FOR MONUMENT LOCATION:

(DESCRIBE METHOD OF SURVEY AND CORNER AUTHENTICATION)

SEARCHED FOR NORTHEAST CORNER, FOUND GRANITE STONE PROTRUDING AND LEANING 2.5 FEET ABOVE GRADE AT A FENCE CORNER. RESET STONE 8" ABOVE GRADE AND ACCEPTED AS THE NORTHEAST CORNER, PERPETUATED AS SHOWN BELOW.

FIELD BOOK NO. PINE RIVER PAGE NO. 46

COMPANY RIVERSIDE LAND SURVEYING LLC

CERTIFIED CORRECT:

Keith J. Walkowski  
KEITH J. WALKOWSKI  
 Registered Land Surveyor  
 DATE: Jan. 3RD, 2006

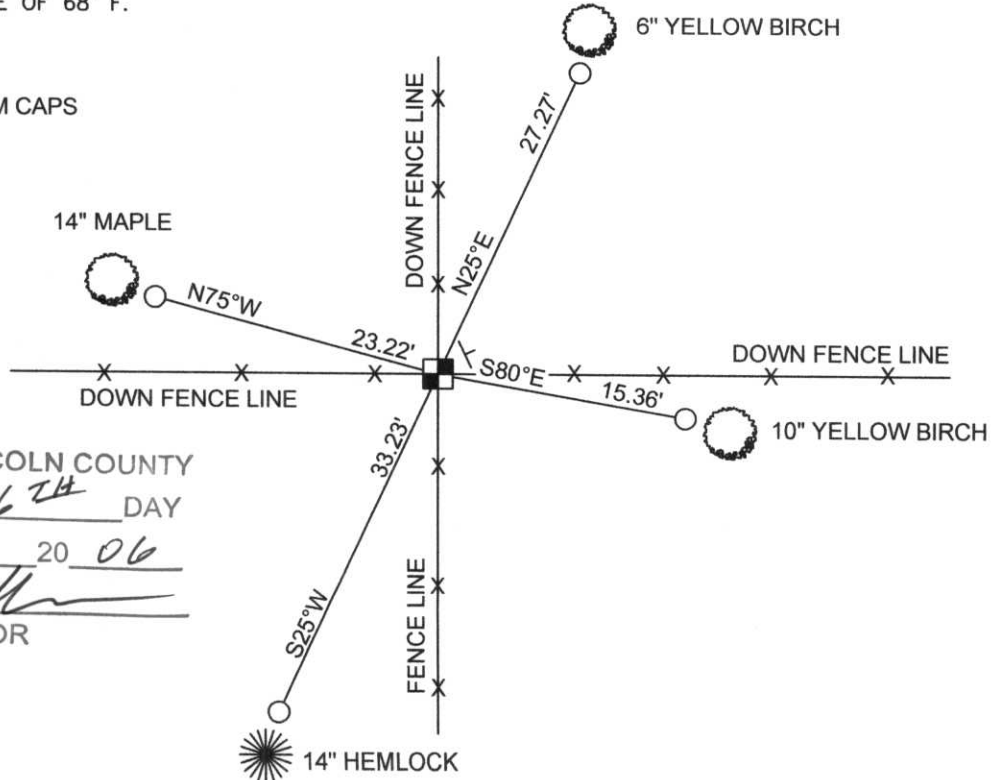
## TIE SKETCH:

SHOW MINIMUM OF FOUR (4) HORIZONTAL TIE DISTANCES TO FIXED WITNESS MONUMENTS. DESCRIBE ALL MONUMENTS FOUND OR SET. CORRECT ALL DISTANCES SHOWN TO STANDARD TEMPERATURE OF 68° F.

- FOUND GRANITE STONE
- SET 3/4" REBAR WITH ALUMINUM CAPS
- VINYL SURVEY MARKER POST

**NOTE**

- ALL BEARINGS ARE FROM A HAND HELD MAGNETIC COMPASS
- THIS DRAWING IS NOT TO SCALE



RECEIVED BY LINCOLN COUNTY SURVEYOR THIS 6<sup>TH</sup> DAY OF January 20 06  
Tony Ball  
 COUNTY SURVEYOR

263173

ATTER II

