

CERTIFIED LAND CORNER RESTORATION

Index No. Q-15

State of Wisconsin }
County of Lincoln } ss.

History of original corner establishment:

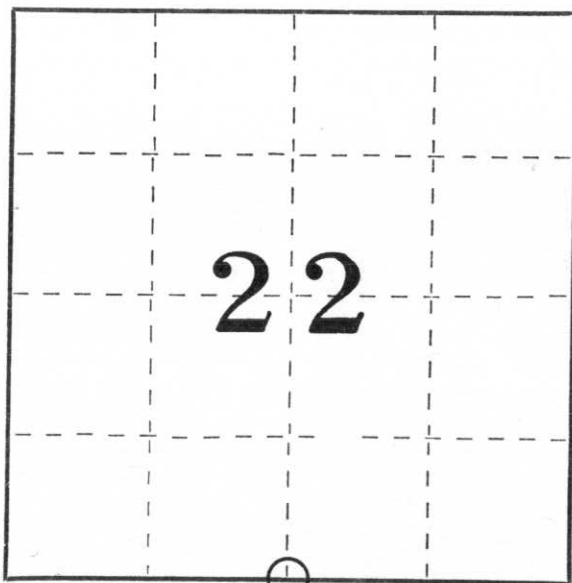
Wood post by original Government surveyor.

I, Sheridan D. Schwark, do hereby certify that on the 19th day of September, 19 80, I found evidence of the S 1/4 corner of Section 22 Township 31, North, Range 7 East, Fourth, Principal Meridian, as described hereon; and that from this evidence I established a new monument and accessories as described hereon to perpetuate the original location of this corner.

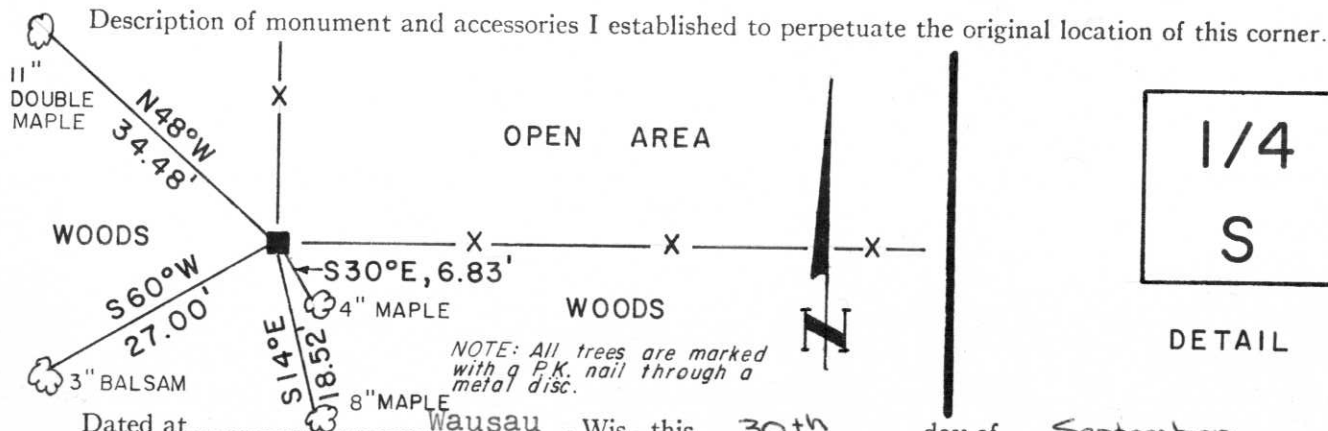
Description of corner evidence found:

We found a red granite monument up approximately 2' above grade and tipped slightly. The monument was 3.4' long, had a .5' x .7' base and a .5' x .5' top. We reset the monument in the same position, leaving it up .5' above grade.

Resident witnesses:



○ = Corner monument restored.



Description of monument and accessories I established to perpetuate the original location of this corner.

Dated at Wausau, Wis., this 30th day of September, 19 80.
Signature Sheridan D. Schwark Title Registered Land Surveyor Registration No. S-1205
(County Surveyor, Registered Land Surveyor, or other duly authorized official)

Office of Register of Deeds, County of _____, I hereby certify that the within instrument was filed in this office for record on the _____ day of _____, 19 _____ at _____ o'clock _____ M.

(Register of Deeds)

By _____ Deputy