

CERTIFIED LAND CORNER RESTORATION

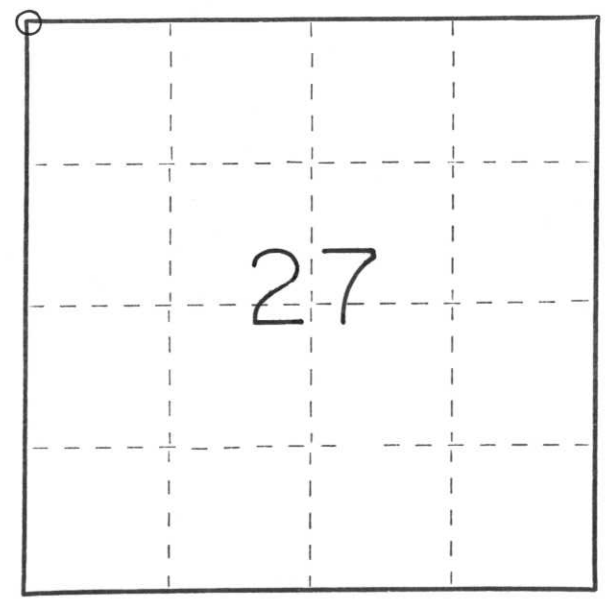
Index No. Q-13

State of Wisconsin }
County of LINCOLN } ss.

I EDWIN R. ABENDROTH, do hereby certify that on the TWELFTH day of DECEMBER, 1991, I found evidence of the NORTHWEST corner of SECTION 27 Township 31, North, Range 7 EAST, Fourth Principal Meridian, as described hereon; and that from this evidence I established a new monument and accessories as described hereon to perpetuate the original location of this corner.

Resident witnesses:
.....
.....
.....

FORM 985 H. C. MILLER CO., MILWAUKEE



○ = Corner monument restored.

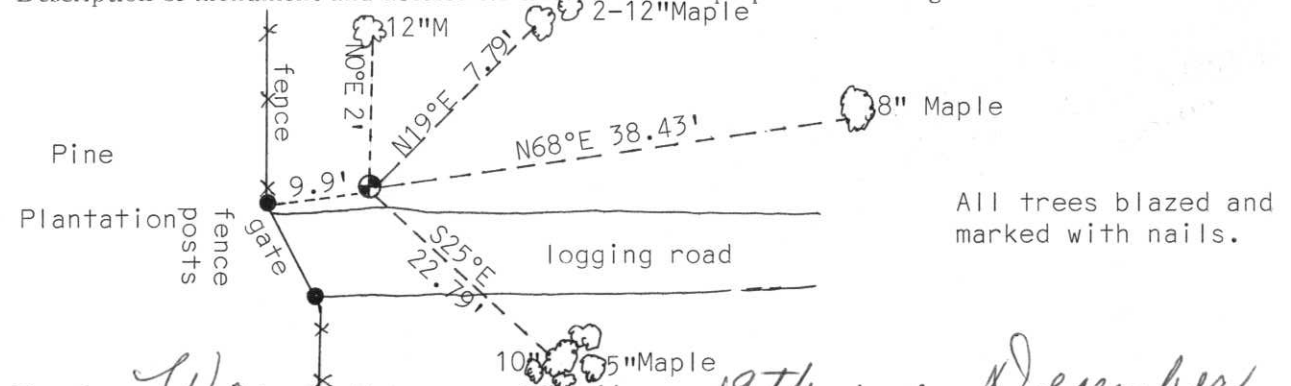
History of original corner establishment:

Original government survey established corner location and set wood post. No further original corner evidence located.

Description of corner evidence found:

We found a fence line running north and south and fence remnants east and west. Talked with Mr. Latzig land owner west of corner. He stated he thought corner to be where we described. However, he had never seen a monument, perhaps monument was bulldozed out when Christmas tree plantation fence was installed. Traversed about Section 27 through this corner all distances were satisfactory set monument.

Description of monument and accessories I established to perpetuate the original location of this corner.



Dated at Wausau, Wis., this 19th day of December, 1991

Signature Edwin R. Abendroth Title Registered Land Surveyor Registration No. S-798
(County Surveyor, Registered Land Surveyor, or other duly authorized official)

Office of Register of Deeds, County of....., I hereby certify that the within instrument was filed in this office for record on the..... day of....., 19..... at..... o'clock..... M.

.....
(Register of Deeds)

By..... Deputy