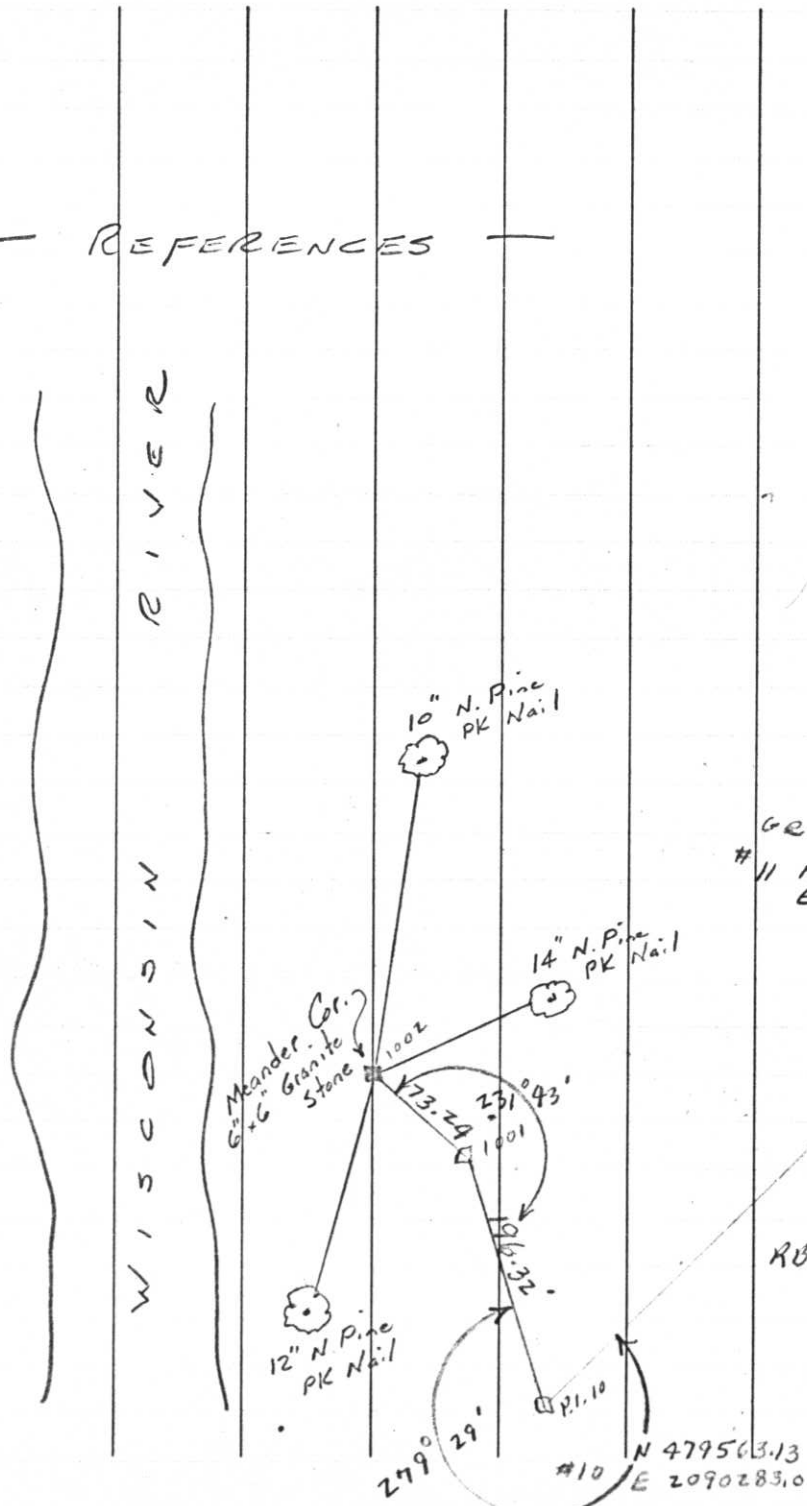


118.

REFERENCES



620 Cor.
#11 N 482217.81
E 2093902.17

RB 9-1-70

Project I.D. 1173-2-00 So. Co. Line
-1.4 Mi. N. Merrill U.S.H. 51
Freeway Lincoln County Wm. Scherer
Surveyor Received from Division of
Hwy's Jan. 11, 1973

Q-5,6
T31N, R7E
May 27, 1970

WISCONSIN RIVER



Trans. Line

End of road

CENTER ROAD

S. Line Sec. 20-31-7

N 479,753.00
E 2,090,122.79
Meander Corner
6" x 6" Granite Stone
"x" chiseled
Top of east bank
orange paint on
trees in area.
Found by Munnighoff
& Scherer 5/27/70

U.S. PUBLIC LAND SURVEY MONUMENT RECORD

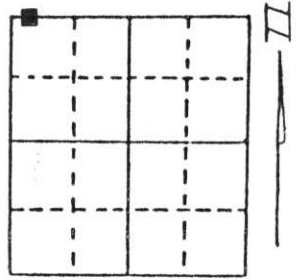
Note: This form is intended and designed to fulfill all requirements of Wisconsin Administrative Code, Chapter A-E 5.02, U.S. Public Land Survey Monument Record (3) (a) (b) (c) (d) (e) (f) (g) (h) (i). An additional sheet may be added if necessary to conform with said requirements.

(a) Corner location: Township 31 North

Range 7 East

Town/City/Village Pine River

County Lincoln



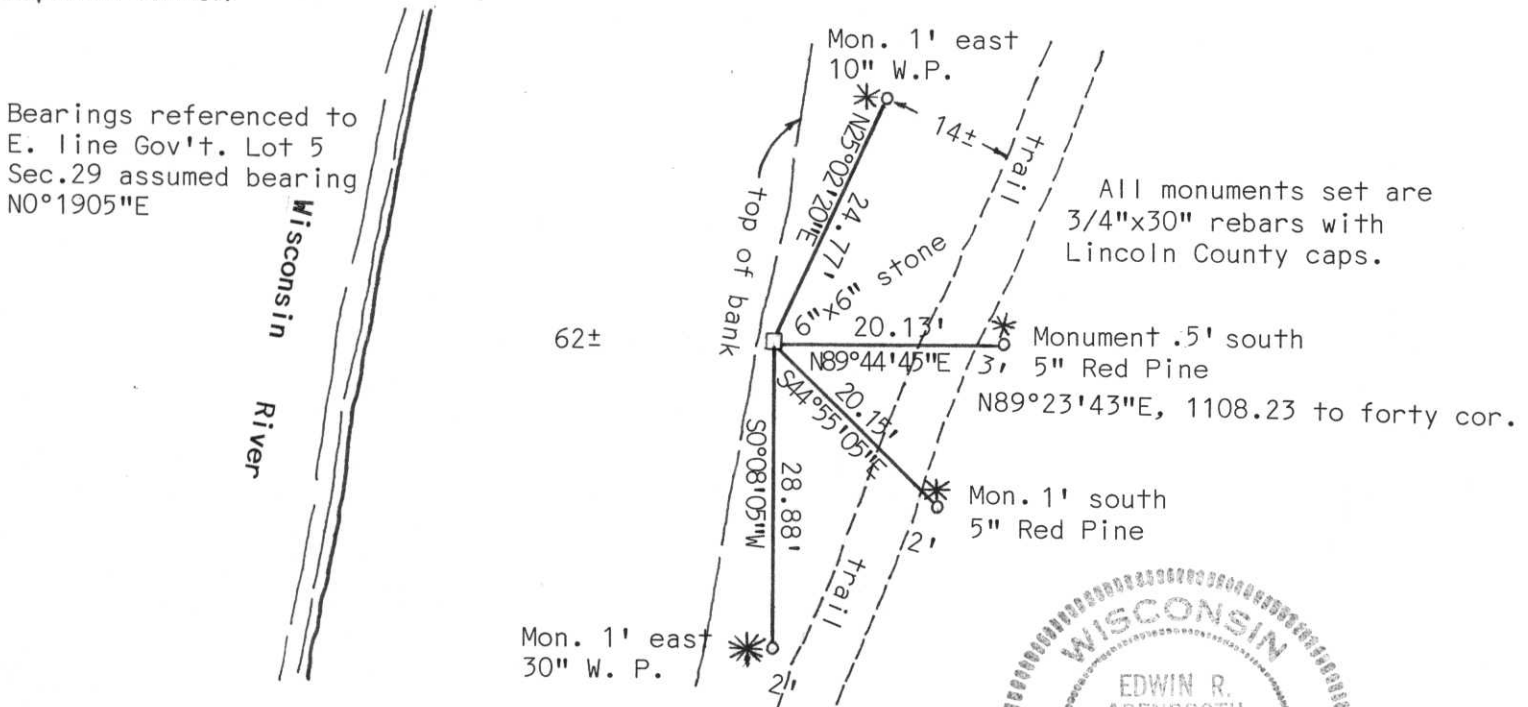
Section 29

(b) (f) (g) (h) Description of monument found at this corner and if it was accepted, state all evidence (material, testimonial, occupational, plats, records, other monuments) used as a basis for accepting. If not accepted or if nothing was found, state evidence used as basis for establishing location. If reestablished through lost corner proportionate methods, indicate all monuments, distances and directions used to establish.

Found 6" X 6" granite stone marked "MC". Corner previously found and tied by transportation department old ties were missing. Retied corner.

**RECEIVED AT LINCOLN COUNTY
COURTHOUSE THIS 14th DAY
OF Dec. 19 95
Pat Priebe
TAX DESCRIPTION OFFICE**

(c) (d) (e) Plan view of corner with ties to at least 4 witness monuments. If in disagreement with previously established corner, show the distances between the two corners and also indicate the ties to the disputed corner.



(i) I, Edwin R. Abendroth
(type or print name) certify that the corner location on this record was determined by me or under my direction and control and that this U.S. Public Land Survey Monument Record is correct and complete to the best of my knowledge and belief.

Edwin R. Abendroth

Signature

Date December 11, 1995



Index No. R-516