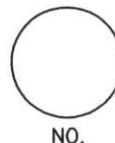


LINCOLN COUNTY U.S. PUBLIC LAND SURVEY MONUMENT LOCATION RECORD

CORNER NUMBER 1931716
 SECTION 19
 TOWNSHIP 31 NORTH
 RANGE 7 EAST
 PINE RIVER
 CITY, VILLAGE, TOWN



LANDMARK BENCHMARK _____
 CORNER IDENTITY: _____ MEANDER CORNER
 FOUND SET
 RESET
 RE-TIED

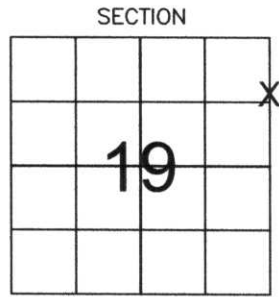
LINCOLN COUNTY COORDINATE: N: 115129.58
 E: 402052.16

ELEVATION-(FEET): _____ DATUM: _____

WEATHER: MOSTLY CLOUDY

DATE OF SURVEY: 1-05-06 TEMPERATURE: 30 °F

SURVEY PARTY: NATHAN WINCENTSEN, KEITH WALKOWSKI



LOCATION (Indicated By X)



BASIS FOR MONUMENT LOCATION:

(DESCRIBE METHOD OF SURVEY AND CORNER AUTHENTICATION)

SEARCHED FOR THE MEANDER CORNER OF THE EAST 1/4 CORNER, FOUND NO EVIDENCE OF MEANDER CORNER. CALCULATED THE EAST 1/4 CORNER PER CSM NO. 437, WHICH MATCHED THE MONUMENTED EAST-WEST 1/4 LINE PER SUN RIDGE ACRES IN SECTION 20. SET BERNSTEN ON LINE BETWEEN SAID CALCULATED EAST 1/4 AND THE NORTHEAST CORNER, AND PERPETUATED AS SHOWN BELOW.

CERTIFIED CORRECT:
Keith J. Walkowski
KEITH J. WALKOWSKI
 Registered Land Surveyor
 DATE: Jan 6th, 2006

FIELD BOOK NO. PINE RIVER PAGE NO. 50
 COMPANY RIVERSIDE LAND SURVEYING LLC

TIE SKETCH:

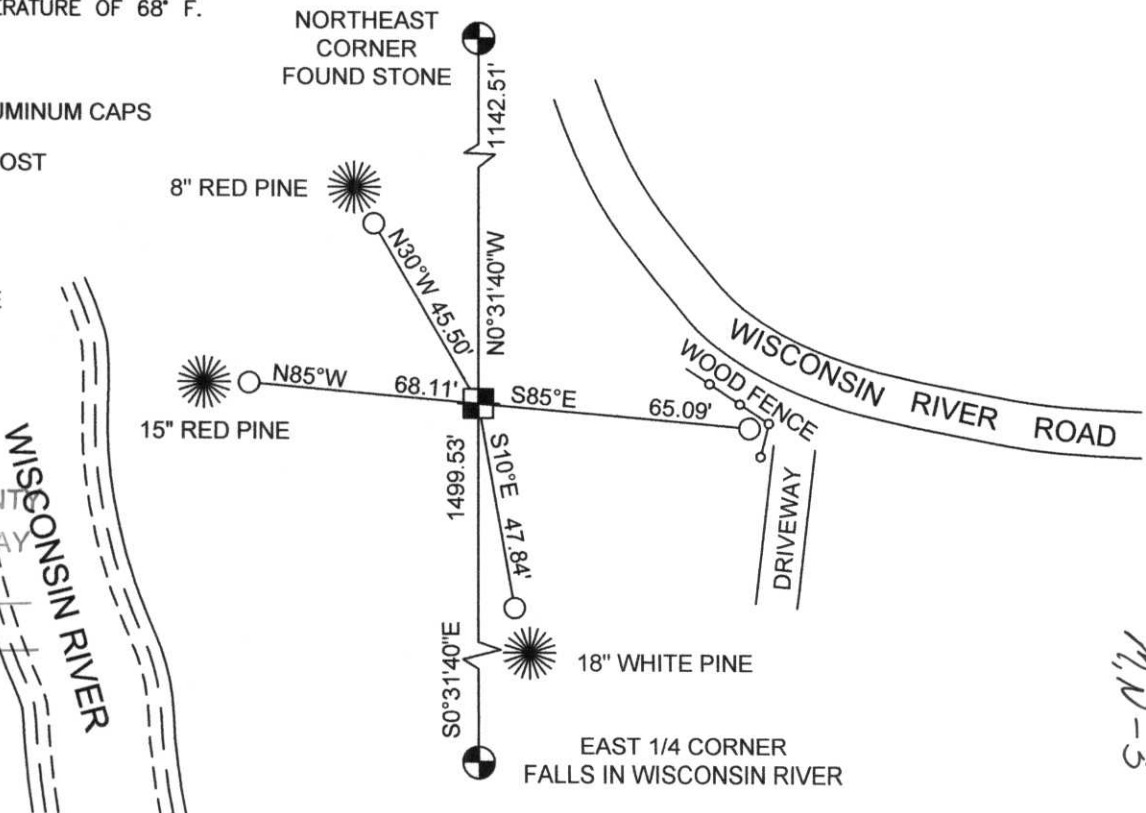
SHOW MINIMUM OF FOUR (4) HORIZONTAL TIE DISTANCES TO FIXED WITNESS MONUMENTS. DESCRIBE ALL MONUMENTS FOUND OR SET. CORRECT ALL DISTANCES SHOWN TO STANDARD TEMPERATURE OF 68° F.

- SET BERNSTEN
- SET 3/4" REBAR WITH ALUMINUM CAPS
- VINYL SURVEY MARKER POST

NOTE

- ALL BEARINGS ARE FROM A HAND HELD MAGNETIC COMPASS
- THIS DRAWING IS NOT TO SCALE

RECEIVED BY LINCOLN COUNTY SURVEYOR THIS 6th DAY OF January 20 06
Tony Ball
 COUNTY SURVEYOR



M-5