

LINCOLN COUNTY U.S. PUBLIC LAND SURVEY MONUMENT LOCATION RECORD

SECTION 18
TOWNSHIP 31N
RANGE 7E



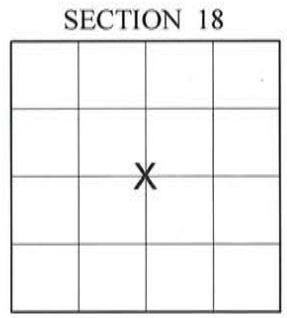
LANDMARK BENCHMARK
CORNER IDENTITY: SURVEY MARKER PIN (SMP)

FOUND
SET
RESET
RE-TIED

SCOTT
CITY, VILLAGE, TOWN

LINCOLN COUNTY COORDINATE: N: _____
E: _____
ELEVATION-(FEET): _____ DATUM: _____

WEATHER: MOSTLY SUNNY
DATE OF SURVEY: 4-15-2015 TEMPERATURE: 55 °F
SURVEY PARTY: KEITH WALKOWSKI



BASIS FOR MONUMENT LOCATION:
(DESCRIBE METHOD OF SURVEY AND CORNER AUTHENTICATION)

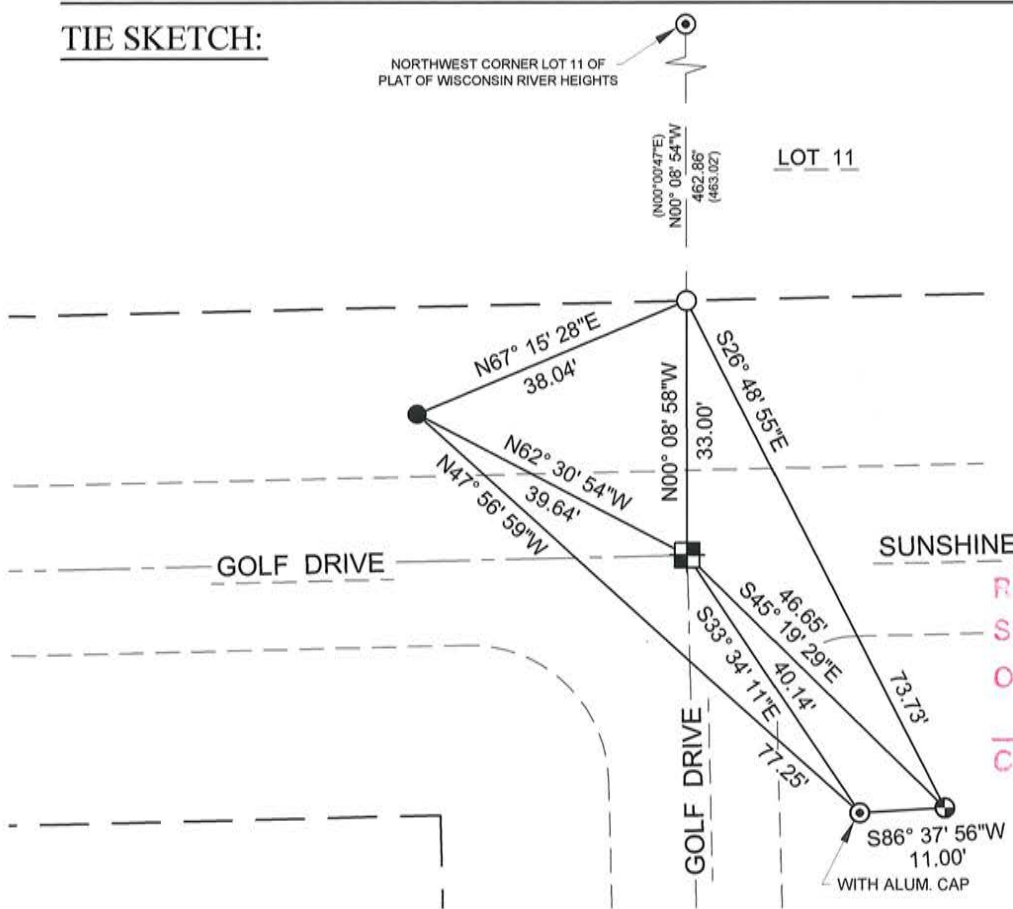
Searched for the Center 1/4 corner using existing tie sheet. The ties did not match the location shown on subdivisions in the area. Set the Center 1/4 corner location per the Plat of Wisconsin River Heights which matched distances to adjoining corners. Perpetuated corner location as shown below.



FIELD BOOK NO. NA PAGE NO. NA
COMPANY RIVERSIDE LAND SURVEYING LLC

CERTIFIED CORRECT:
Keith J. Walkowski
KEITH J. WALKOWSKI S-2717
Professional Land Surveyor
DATE: 5-5-15

TIE SKETCH:



- - SURVEY MARKER PIN (SMP)
- - 1-1/2" O.D. IRON PIPE
- ⊙ - FOUND 3/4" REBAR
- - FOUND 1" REBAR
- ⊕ - FOUND 1-1/4" REBAR
- () - RECORDED BEARING/LENGTH

1. BEARING ARE BASED ON THE LINCOLN COUNTY COORDINATE SYSTEM NAD83 (2011) AND REFERENCED AS SHOWN
2. THIS DRAWING IS NOT TO SCALE

RECEIVED BY LINCOLN COUNTY
SURVEYOR THIS 5TH DAY
OF May 20, 15
Tony Dahl
COUNTY SURVEYOR



U.S. PUBLIC LAND SURVEY MONUMENT RECORD

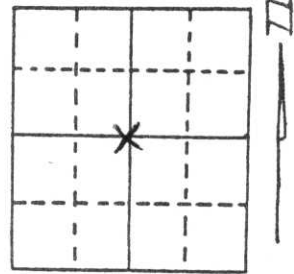
Note: This form is intended and designed to fulfill all requirements of Wisconsin Administrative Code, Chapter A-E 5.02, U.S. Public Land Survey Monument Record (3) (a) (b) (c) (d) (e) (f) (g) (h) (i). An additional sheet may be added if necessary to conform with said requirements.

(a) Corner location: Township 31 North

Range 7 East

Town/City/Village SCOTT

County LINCOLN

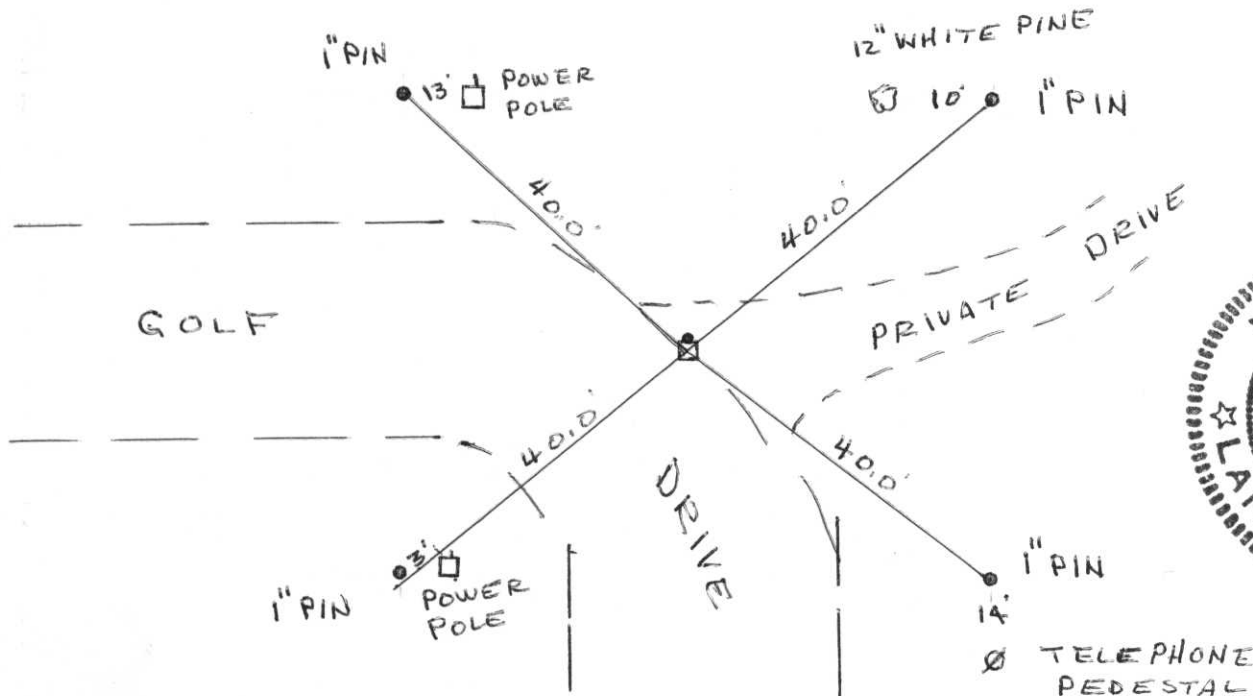


Section 18

(b) (f) (g) (h) Description of monument found at this corner and if it was accepted, state all evidence (material, testimonial, occupational, plats, records, other monuments) used as a basis for accepting. If not accepted or if nothing was found, state evidence used as basis for establishing location. If reestablished through lost corner proportionate methods, indicate all monuments, distances and directions used to establish.

Located corner near intersection of centerlines of Golf Drive. A white granite monument with + on top. A 1" iron rod on the north edge of monument. 1 foot below surface.

(c) (d) (e) Plan view of corner with ties to at least 4 witness monuments. If in disagreement with previously established corner, show the distances between the two corners and also indicate the ties to the disputed corner.



(i) I, Robert K. Fergot

(type or print name) certify that the corner location on this record was determined by me or under my direction and control and that this U.S. Public Land Survey Monument Record is correct and complete to the best of my knowledge and belief.

Robert K. Fergot
Signature

October 30, 1995
Date

Index No. K-3

REVIEW
OF LOCAL

STATION

31 N
7 E

LOC - PINE RIVER

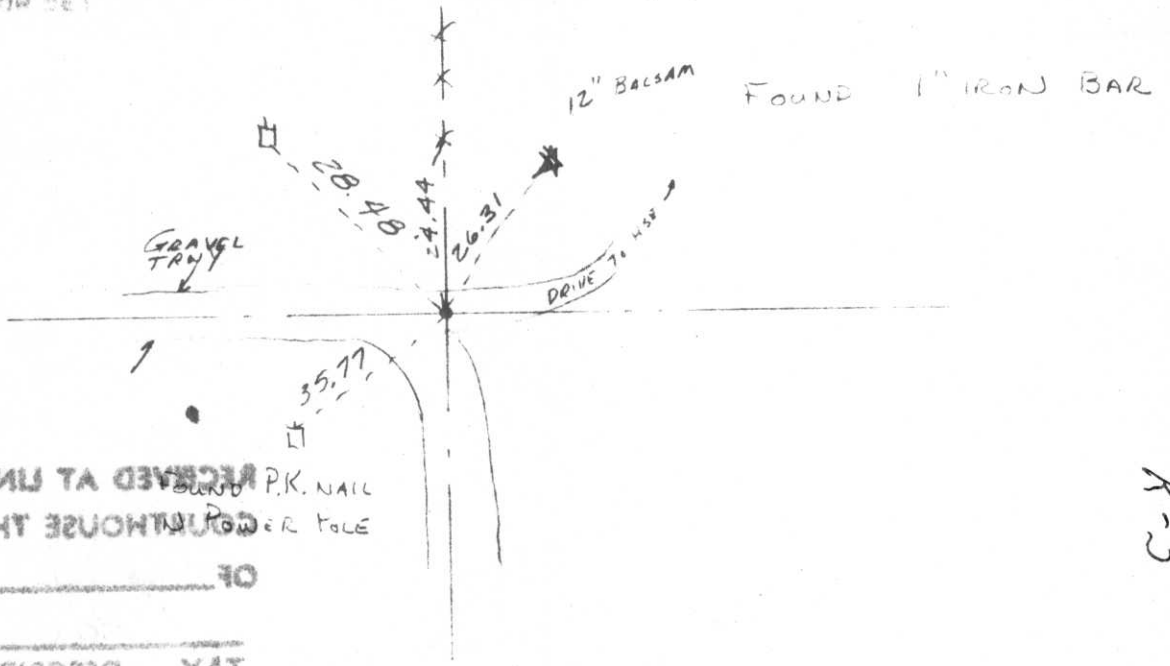
X LANDMARK BENCHMARK

CORNER POINT CENTER SEC
DATE OF SURVY JUNE 1, 1976
WEATHER CLEAR BREEZY
TEMPERATURE 65°
SURVEY BY D. TUSTY M. HENRICHS

1X8

BASE FOR MONUMENT LOCAL
OFFICE WITH A COPY OF THIS AND CORRECTED TO

THE SKETCH SHOWS HORIZONTAL DISTANCES MEASURED BETWEEN MONUMENTS AND ALSO ALL MONUMENTS FOUND OR SET



RECEIVED AT LINCOLN COUNTY
COUNTY HOUSE THIS DAY
OF 19
TAX DESCRIPTION OFFICE

P.K. NAIL
POWER POLE

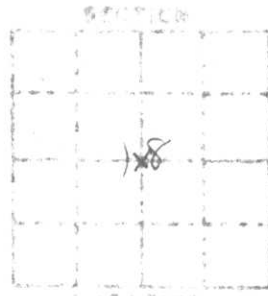
K-3

NO. 50 SURVEY LOCATION

LANDMARK RANCH MARK

CORNER IDENT. CENTER SEC
DATE OF SURV. JUNE 1, 1976
WEATHER CLEAR, BREEZY
TEMPERATURE 65°
SURVEYORS D. TUSTY M. HENRICHS

SECTION 1
TOWNSHIP 31 N
RANGE 7 E
SCOTT - PINE RIVER
COUNTY, OREGON



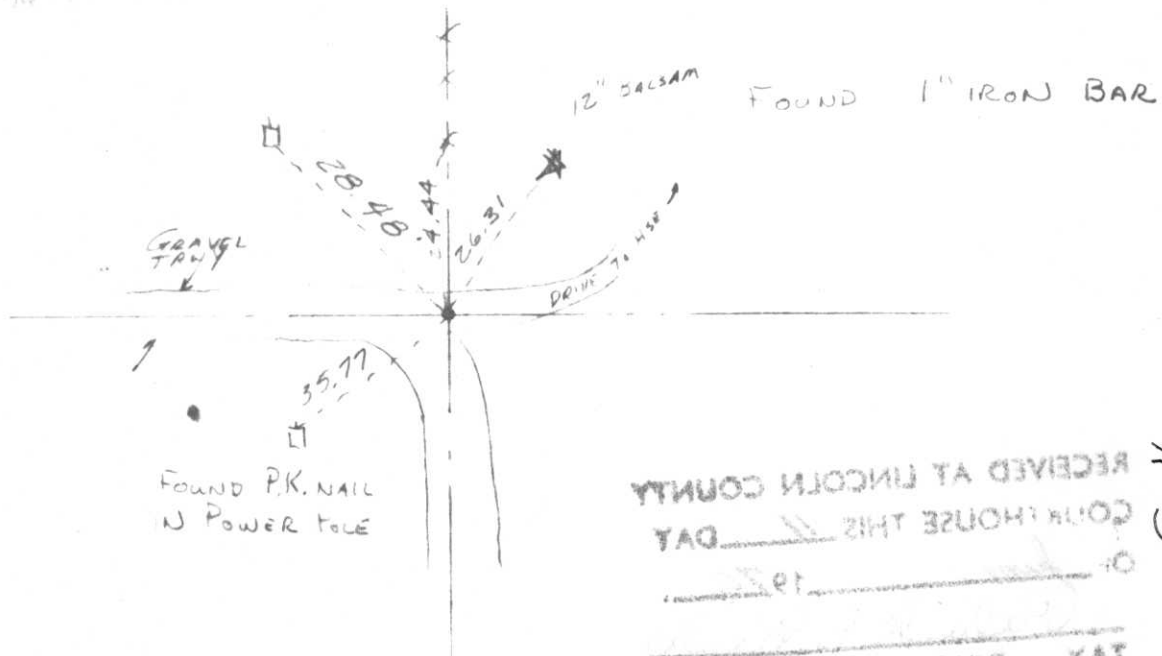
LOCATION INDICATED BY X



LOCATION OF MONUMENT LOCATION

WITH A COPY OF THIS AND A COPY OF AUTHORIZATION

THESE MONUMENTS ARE TO BE PLACED BY THE SURVEYOR AT THE CORNERS OF THESE MONUMENTS. REMOVE ALL MONUMENTS



RECEIVED AT LINCOLN COUNTY
COURTHOUSE THIS 11 DAY
OF 1976
TAX DESCRIPTION OFFICE

H-3