

U.S. PUBLIC LAND SURVEY MONUMENT RECORD

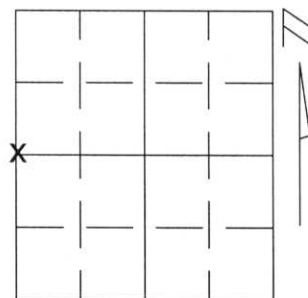
Note: This form is intended and designed to fulfill all requirements of Wisconsin Administrative Code, Chapter A-E 5.02, U.S. Public Land Survey Monument Record (3)(a)(b)(c)(d)(e)(f)(g)(h)(i). An additional sheet may be added if necessary to conform with said requirements.

(a) Corner location: Township 31 North

Range 7 East

Town/City/Village PINE RIVER

County LINCOLN

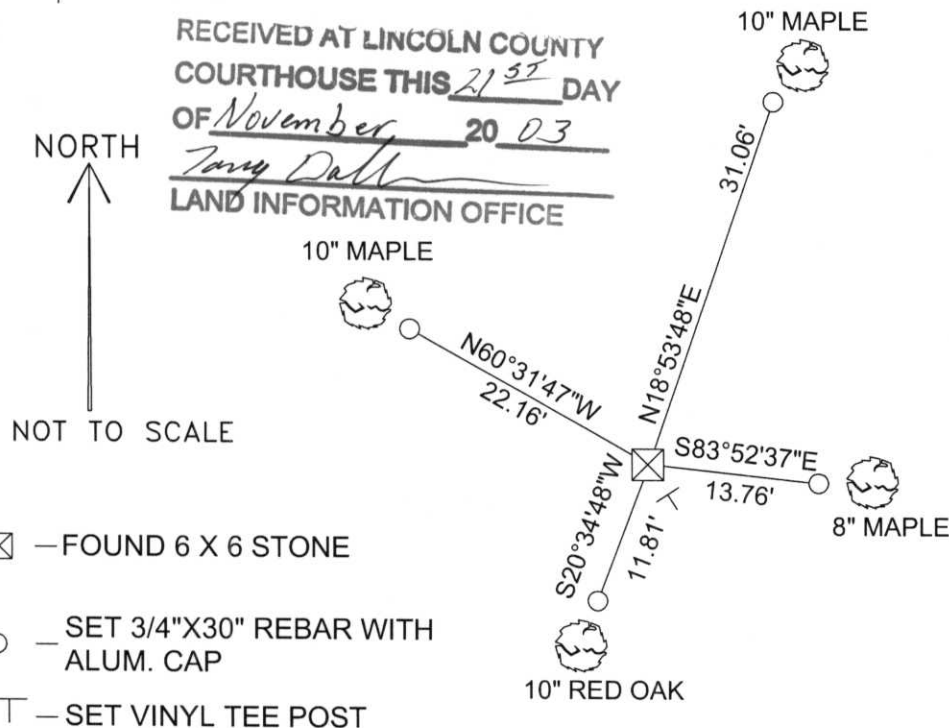


Section 17

(b)(f)(g)(h) Description of monument found at this corner and if it was accepted, state all evidence (material, testimonial, occupational, plats, records, other monuments) used as a basis for accepting. If not accepted or if nothing was found, state evidence used as basis for establishing location. If reestablished through lost corner proportionate methods, indicate all monuments, distances and directions used to establish.

I found 6"x6" stone as shown on current Land Survey Monument Record at the Lincoln County Surveyors Office. Several ties were missing or disturbed. The corner was then re-tied.

(c)(d)(e) Plan view of corner with ties to at least 4 witness monuments. If in disagreement with previously established corner, show the distances between the two corners and also indicate the ties to the disputed corner.



NOTE

-ALL BEARINGS SHOWN ARE REFERENCED TO LINCOLN COUNTY COORDINATE SYSTEM.

-ALL TIES MEASURED ELECTRONICALLY WITH TOTAL STATION.

- ALL WITNESS MONUMENTS SET ±1' FROM TREES AND ALL BEARING TREES HAVE OLD BLAZES.

RECEIVED AT LINCOLN COUNTY
 COURTHOUSE THIS 21ST DAY
 OF November 20 03
Tony Dahl
 LAND INFORMATION OFFICE



☒ — FOUND 6 X 6 STONE

○ — SET 3/4"X30" REBAR WITH ALUM. CAP

⊥ — SET VINYL TEE POST

(i) I, Kyle R. Fischer
 (type or print name) certify that the corner location on this record was determined by me or under my direction and control and that this U.S. Public Land Survey Monument Record is correct and complete to the best of my knowledge and belief.

Kyle R. Fischer 11-18-03
 Signature Date

U.S. PUBLIC LAND SURVEY MONUMENT RECORD

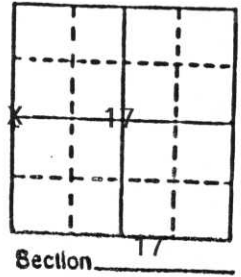
Note: This form is intended and designed to fulfill all requirements of Wisconsin Administrative Code, Chapter A-E 5.02, U.S. Public Land Survey Monument Record (3) (a) (b) (c) (d) (e) (f) (g) (h) (i). An additional sheet may be added if necessary to conform with said requirements.

(a) Corner location: Township 31 North

Range 7 East

Town Pine River

County Lincoln

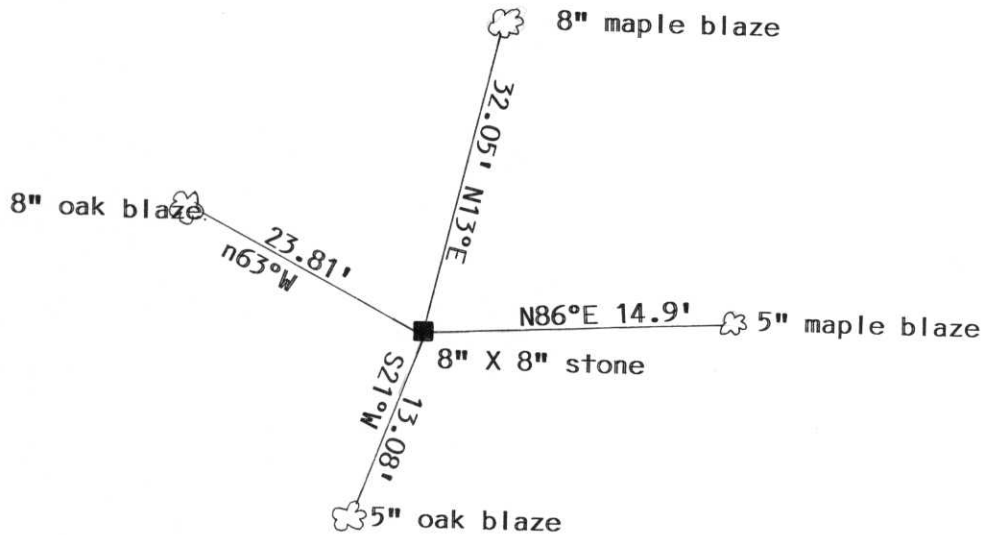


b) (f) (g) (h) Description of monument found at this corner and if it was accepted, state all evidence (material, testimonial, occupational, plats, records, other monuments) used as a basis for accepting. If not accepted or if nothing was found, state evidence used as basis for establishing location. If reestablished through lost corner proportionate methods, indicate all monuments, distances and directions used to establish.

We found a 8" X 8" Granite stone monument with " $\frac{1}{4}$ " Sec. markings on top of stone with a cross monument was in good shape and position. Referenced to bearing trees.



c) (d) (e) Plan view of corner with ties to at least 4 witness monuments. If in disagreement with previously established corner, show the distances between the two corners and also indicate the ties to the disputed corner.



(i) I, Edwin R. Abendroth RLS No. S-798
 (type or print name) certify that the corner location on this record was determined by me or under my direction and control and that this U.S. Public Land Survey Monument Record is correct and complete to the best of my knowledge and belief.

Edwin R. Abendroth May 15, 1992
 Signature Date

Index No. K-5