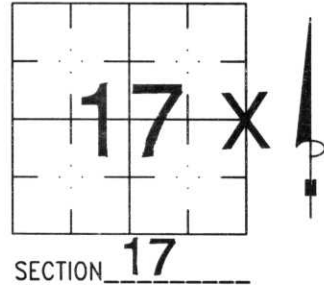


U.S. PUBLIC LAND SURVEY MONUMENT RECORD

NOTE: THIS FORM IS INTENDED AND DESIGNED TO FULFILL ALL REQUIREMENTS OF WISCONSIN ADMINISTRATIVE CODE, CHAPTER A-E 7.08 U.S. PUBLIC LAND SURVEY MONUMENT RECORD (3) (a) (b) (c) (d) (e) (f) (g) (h) (i). AN ADDITIONAL SHEET MAY BE ADDED IF NECESSARY TO CONFORM WITH SAID REQUIREMENTS.

(a) CORNER LOCATION: TOWNSHIP 31 NORTH
 RANGE 7 EAST/WEST
 TOWN/CITY/VILLAGE PINE RIVER
 COUNTY LINCOLN



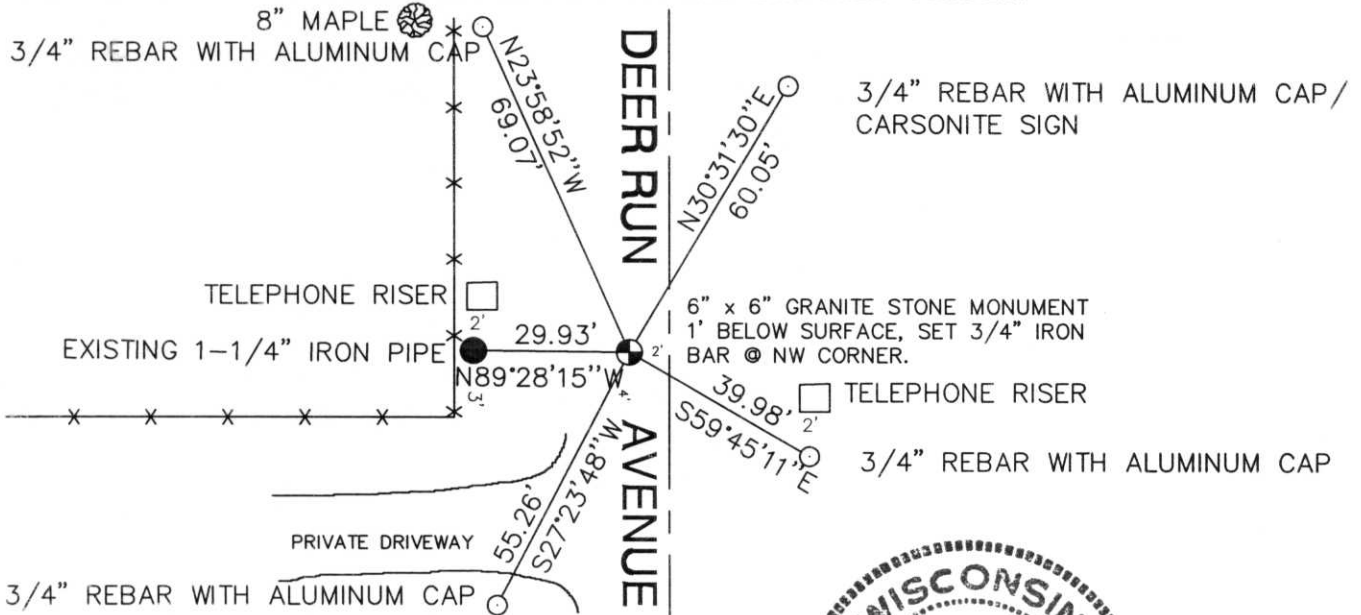
SECTION 17

(b) (f) (g) (h) DESCRIPTION OF MONUMENT FOUND AT THIS CORNER AND IF IT WAS ACCEPTED, STATE ALL EVIDENCE (MATERIAL, TESTIMONIAL, OCCUPATIONAL, PLATS, RECORDS, OTHER MONUMENTS) USED AS BASIS FOR ACCEPTING. IF NOT ACCEPTED OR IF NOTHING WAS FOUND, STATE EVIDENCE USED AS BASIS FOR ESTABLISHING LOCATION. IF REESTABLISHED THROUGH LOST CORNER PROPORTIONATE METHODS, INDICATE ALL MONUMENTS, DISTANCES AND DIRECTIONS USED TO ESTABLISH. INDICATE TYPE OF MONUMENT FOUND OR SET AND SIGN POST.

ORIGINAL TIES WERE ALL GONE. FOUND 16D NAIL IN ROAD, MEASURED FROM NE CORNER SECTION 17, DID NOT MATCH DISTANCE FROM CSM BY ABENDROTH BY 1 FOOT. ASKED TOWN GRADER OPERATOR TO DIG DOWN TO STONE WITH GRADER BLADE. WHEN HE HIT THE GRANITE STONE, IT CHOKED OFF THE GRADER. CHIPPED NE CORNER OF STONE A LITTLE. STONE WAS IN GOOD SHAPE, 1 FOOT BELOW SURFACE. POUNDED 3/4" x 24" IRON BAR AT NW CORNER OF STONE. TIED OUT, SHOT TIE DISTANCES WITH EDM.

**RECEIVED AT LINCOLN COUNTY
 COURTHOUSE THIS 13th DAY
 OF July 19 99
Pat Probst
LAND INFORMATION OFFICE**

(c) (d) (e) PLAN VIEW OF CORNER WITH TIES TO AT LEAST 4 WITNESS MONUMENTS. IF IN DISAGREEMENT WITH PREVIOUSLY ESTABLISHED CORNER, SHOW THE DISTANCES BETWEEN THE TWO CORNERS AND ALSO INDICATE THE TIES TO THE DISPUTED CORNER.



(i) I, DAVID L. OSTERBRINK RLS
 (TYPE OR PRINT NAME) CERTIFY THAT THE CORNER LOCATION ON THIS RECORD WAS DETERMINED BY ME OR UNDER MY DIRECTION AND CONTROL AND THAT THIS U.S. PUBLIC LAND SURVEY MONUMENT RECORD IS CORRECT AND COMPLETE TO THE BEST OF MY KNOWLEDGE AND BELIEF.

David L. Osterbrink _____ 7-7-99 _____
 SIGNATURE DATE

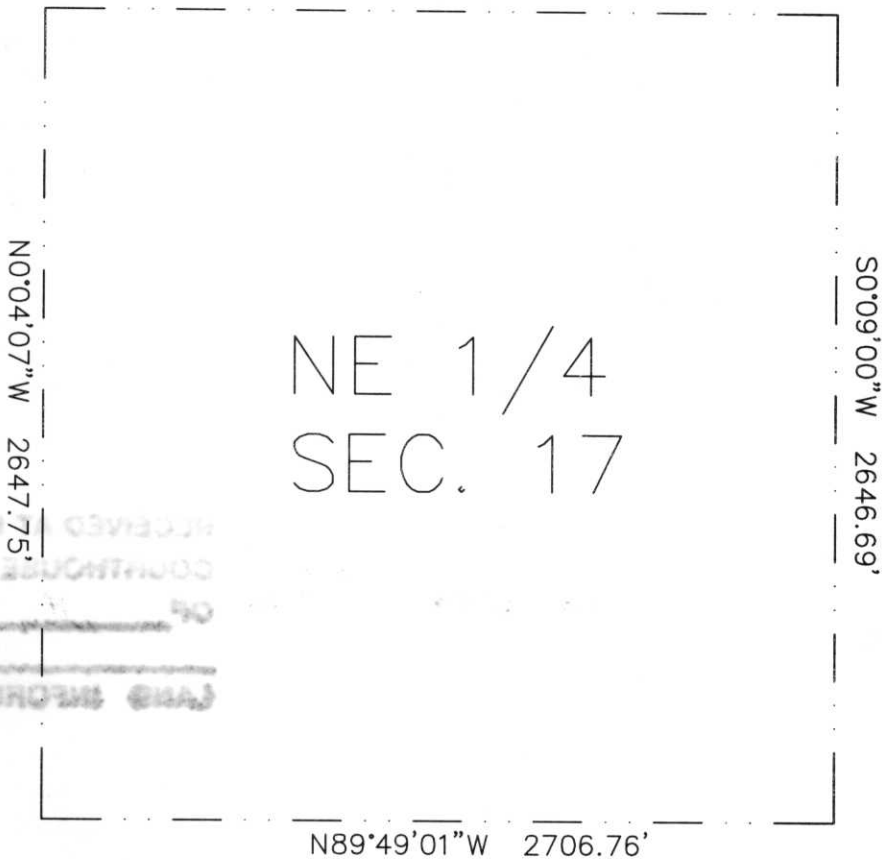


INDEX NO. K-9

N 1/4 COR. SEC. 17-31-7
NO MONUMENT, SHOT TIES
PAPER CORNER

NE COR. SEC. 17-31-7
EXISTING COUNTY PK NAIL

S89°47'42"E 2716.85'



RECEIVED
COUNTY CLERK
LINCOLN COUNTY
OCT 18 1900
LAND RECORDS OFFICE

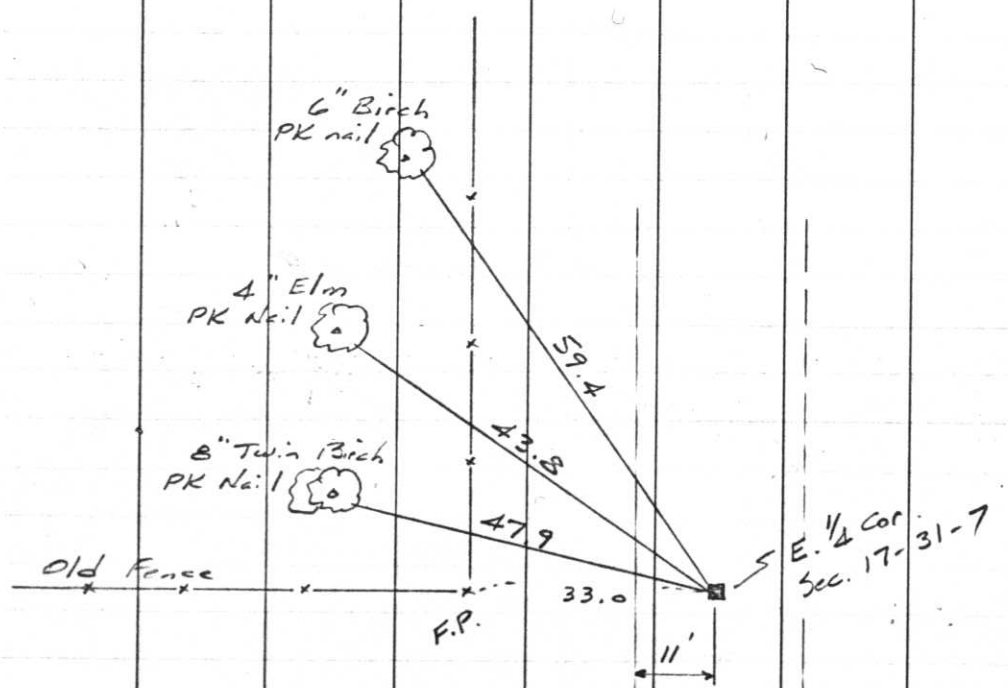
CENTER OF SECTION 17
SET 5/8" 1/2 ROUND
IRON BAR IN PLACE OF
RUSTED SPIKE

EAST 1/4 COR. SEC. 17-31-7
EXISTING GRANITE STONE

NO SCALE

115.

REFERENCES



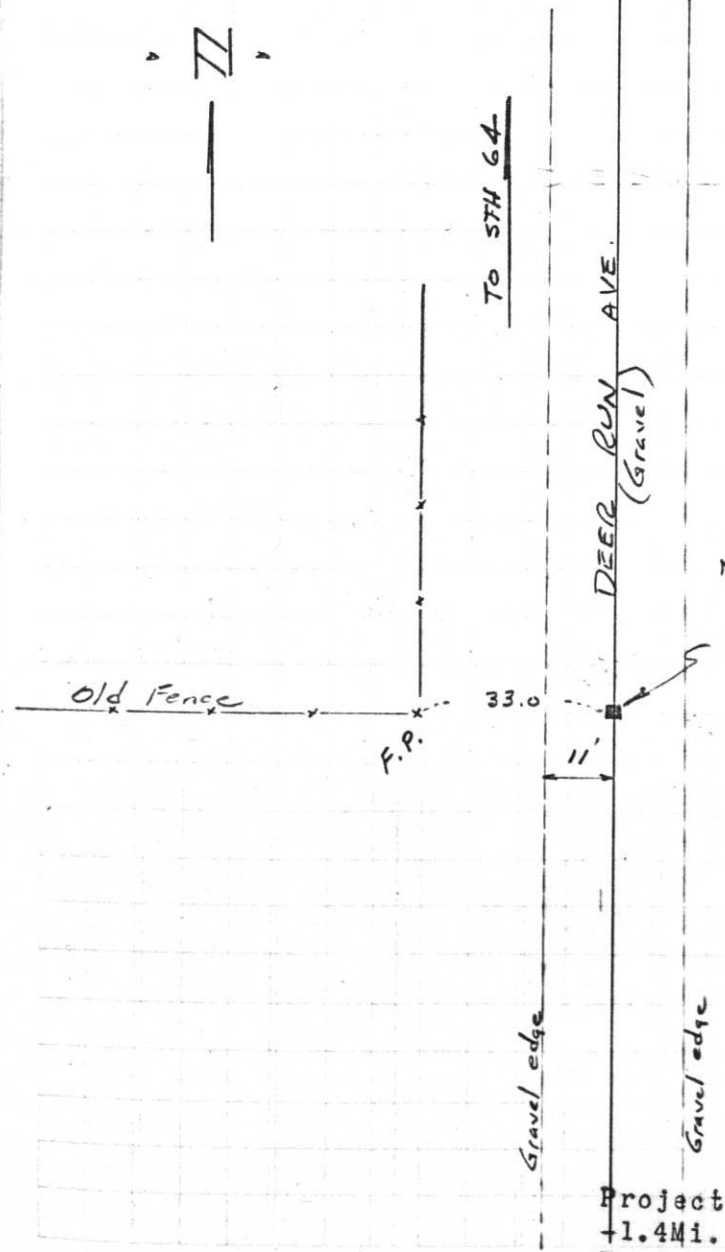
K-9

20

T31 N

R7E

June 25, 1970



N 487,743.70
 E 2,095,177.77
 E. 1/4 Cor. Sec. 17-31-7
 6" x 6" Granite stone
 3" below gravel
 Found by Scherer 6/25/70
 (Used Lincoln & Gradall)

Project I.D. 1173-2-00 So. Co. Line
 +1.4 Mi. N. Merrill U.S.H. 51
 Freeway Lincoln County Wm. Scherer
 Surveyor Received from Division of
 Hwy's Jan. 11 1973