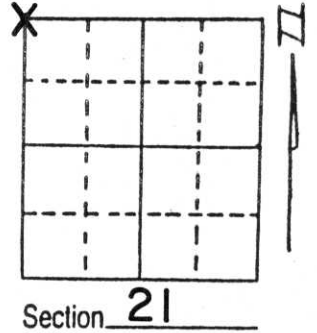


# U.S. PUBLIC LAND SURVEY MONUMENT RECORD

Note: This form is intended and designed to fulfill all requirements of Wisconsin Administrative Code, Chapter A-E 5.02, U.S. Public Land Survey Monument Record (3) (a) (b) (c) (d) (e) (f) (g) (h) (i). An additional sheet may be added if necessary to conform with said requirements.

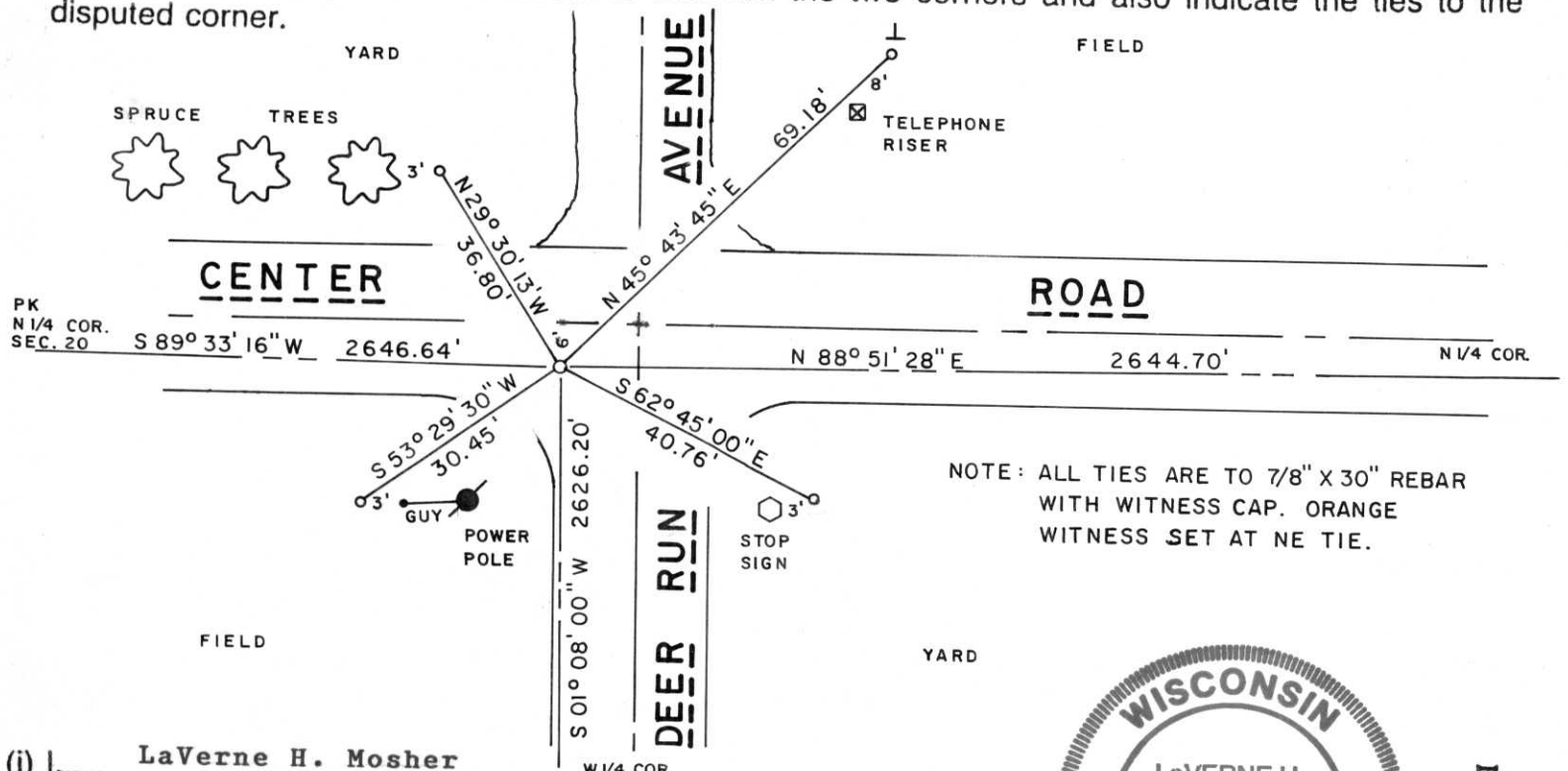
(a) Corner location: Township 31 North  
 Range 7 East  
 Town/City/Village PINE RIVER  
 County LINCOLN



(b) (f) (g) (h) Description of monument found at this corner and if it was accepted, state all evidence (material, testimonial, occupational, plats, records, other monuments) used as a basis for accepting. If not accepted or if nothing was found, state evidence used as basis for establishing location. If reestablished through lost corner proportionate methods, indicate all monuments, distances and directions used to establish.

Original Corner - Wood Post set during Original Government Survey, 1850's.  
 Traversed through entire North 1/2 of Section 21 as well as to adjoining corners in Sections 16 and 17. Also discussed corner location with Mr. Henry Wilharms, local resident who was knowledgeable about cornerstones in this area. Mr. Wilharms informed me he had seen this cornerstone protruding from roadbed many years ago but had not seen it since road was blacktopped many years ago. Excavated with backhoe in area indicated by Mr. Wilharms but found no evidence of cornerstone. Area excavated was about 10' x 8' to depth of about 40 inches. Established corner point at point indicated by Mr. Wilharms, Sr. as best evidence of corner location; said point in harmony with our computed point as determined by measurement. Set a standard Lincoln County Monument (Berntsen) at corner such that top of monument is about 5 inches below roadway surface.

(c) (d) (e) Plan view of corner with ties to at least 4 witness monuments. If in disagreement with previously established corner, show the distances between the two corners and also indicate the ties to the disputed corner.



(i) I, LaVerne H. Mosher  
 (type or print name) certify that the corner location on this record was determined by me or under my direction and control and that this U.S. Public Land Survey Monument Record is correct and complete to the best of my knowledge and belief.

LaVerne H. Mosher July 17, 1995  
 Signature Date



Index No. 6-14