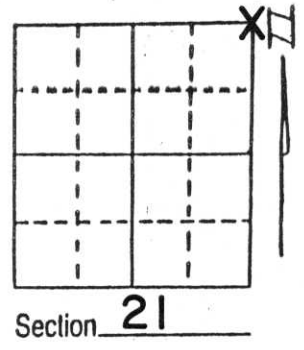


U.S. PUBLIC LAND SURVEY MONUMENT RECORD

Note: This form is intended and designed to fulfill all requirements of Wisconsin Administrative Code, Chapter A-E 5.02, U.S. Public Land Survey Monument Record (3) (a) (b) (c) (d) (e) (f) (g) (h) (i). An additional sheet may be added if necessary to conform with said requirements.

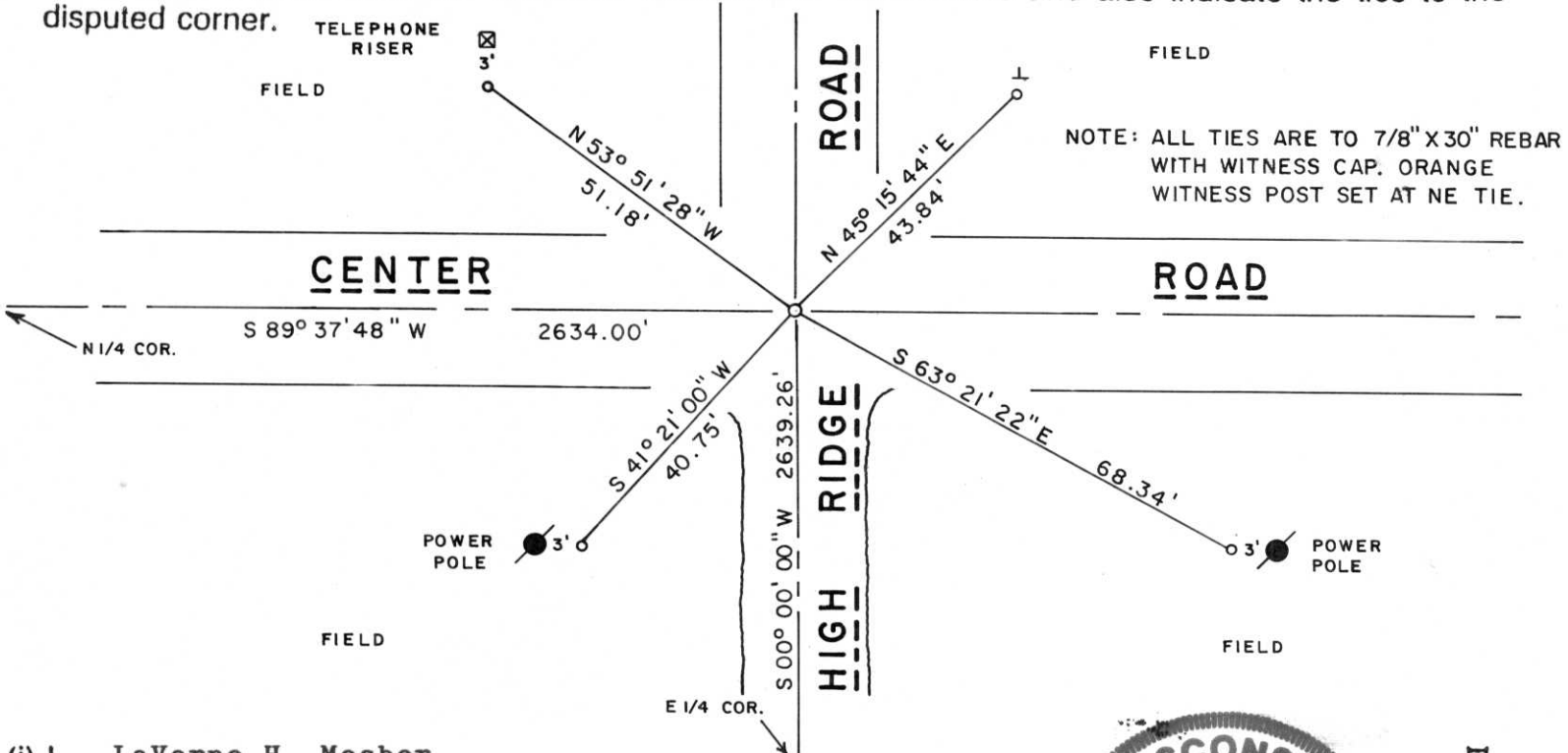
(a) Corner location: Township 31 North
 Range 7 East
 Town/~~City/Village~~ PINE RIVER
 County LINCOLN



(b) (f) (g) (h) Description of monument found at this corner and if it was accepted, state all evidence (material, testimonial, occupational, plats, records, other monuments) used as a basis for accepting. If not accepted or if nothing was found, state evidence used as basis for establishing location. If reestablished through lost corner proportionate methods, indicate all monuments, distances and directions used to establish.

Original Corner - Wood Post set during Original Government Survey. Traversed from Stone at East 1/4 to NE to N1/4 to NW and thence to stone at West 1/4 corner to determine position for excavation. Recovered a PK Nail at centerline intersect, origin unknown but believe to be set for survey of new bridge to East. Excavated with backhoe at centerline of road then widened in each direction until area measuring 9 feet x 9 feet x 40 inches deep was uncovered. No trace of corner monument was found. Corner point established by measurement from adjacent forty fence lines and other established corners in the area. Set a standard Lincoln County Berntsen Monument at corner such that top of monument is about 5 inches below roadway surface.

(c) (d) (e) Plan view of corner with ties to at least 4 witness monuments. If in disagreement with previously established corner, show the distances between the two corners and also indicate the ties to the disputed corner.



(i) I, LaVerne H. Mosher
 (type or print name) certify that the corner location on this record was determined by me or under my direction and control and that this U.S. Public Land Survey Monument Record is correct and complete to the best of my knowledge and belief.
LaVerne H. Mosher 07/14/95
 Signature Date



Index No. 194/3