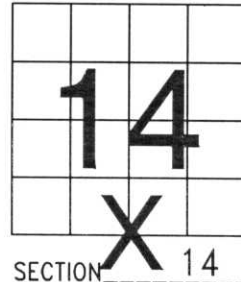


# U.S. PUBLIC LAND SURVEY MONUMENT RECORD

NOTE: THIS FORM IS INTENDED AND DESIGNED TO FULFILL ALL REQUIREMENTS OF WISCONSIN ADMINISTRATIVE CODE, CHAPTER A-E 7.08 U.S. PUBLIC LAND SURVEY MONUMENT RECORD (3) (a) (b) (c) (d) (e) (f) (g) (h) (i). AN ADDITIONAL SHEET MAY BE ADDED IF NECESSARY TO CONFORM WITH SAID REQUIREMENTS.

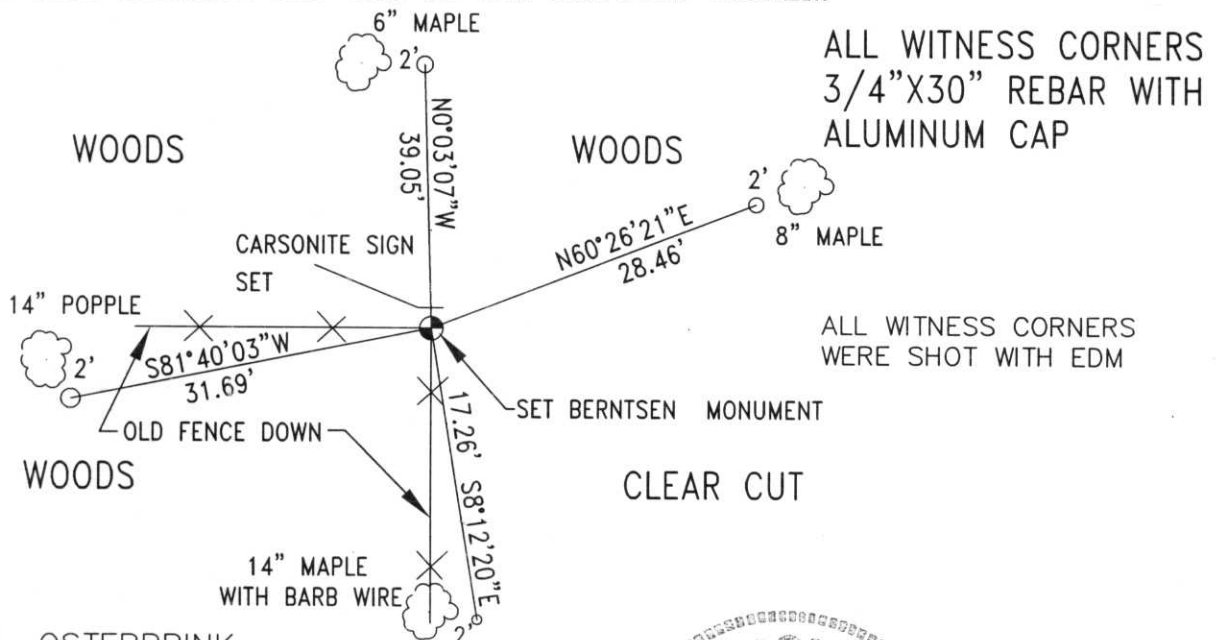
(a) CORNER LOCATION: TOWNSHIP 31 NORTH  
 RANGE 7 EAST/~~WEST~~  
 TOWN/~~CITY/VILLAGE~~ PINE RIVER  
 COUNTY LINCOLN



(b) (f) (g) (h) DESCRIPTION OF MONUMENT FOUND AT THIS CORNER AND IF IT WAS ACCEPTED, STATE ALL EVIDENCE (MATERIAL, TESTIMONIAL, OCCUPATIONAL, PLATS, RECORDS, OTHER MONUMENTS) USED AS BASIS FOR ACCEPTING. IF NOT ACCEPTED OR IF NOTHING WAS FOUND, STATE EVIDENCE USED AS BASIS FOR ESTABLISHING LOCATION. IF REESTABLISHED THROUGH LOST CORNER PROPORTIONATE METHODS, INDICATE ALL MONUMENTS, DISTANCES AND DIRECTIONS USED TO ESTABLISH. INDICATE TYPE OF MONUMENT FOUND OR SET AND SIGN POST.

CORNER SET IN 1852 BY ALBERT & FREDERICK ELIS. KRUEGER SET A NAIL HERE FOR CSM VOL. 4, PG. 249. THE NAIL REPRESENTED AN OLD EAST - WEST FENCE AND FENCE FROM SOUTH INTERSECTION. NEIGHBORS DID NOT KNOW OF ANY OTHER LOCATION FOR CORNER. AFTER TRAVERSING TO ALL CORNERS AROUND THIS CORNER I FOUND THAT THE BEARING WAS WAY OFF COMPARED TO LINES TO THE NORTH AND SOUTH. SEARCHED AREA THAT CORNER SHOULD HAVE BEEN AT, FOUND NO EVIDENCE. HELD KRUEGER NAIL, WHICH REPRESENTED OLD FENCE LINE INTERSECTION AND EDGES OF LOGGING OPERATIONS BY VARIOUS LAND OWNERS. SET BERNTSEN MONUMENT, TIED OUT CORNER.

(c) (d) (e) PLAN VIEW OF CORNER WITH TIES TO AT LEAST 4 WITNESS MONUMENTS. IF IN DISAGREEMENT WITH PREVIOUSLY ESTABLISHED CORNER, SHOW THE DISTANCES BETWEEN THE TWO CORNERS AND ALSO INDICATE THE TIES TO THE DISPUTED CORNER.



RECEIVED AT LINCOLN COUNTY  
 COURTHOUSE THIS 22 DAY  
 OF Oct 19 98  
 OF Pat Krueger  
 TAX DESCRIPTION OFFICE

(i) I, DAVID L. OSTERBRINK  
 (TYPE OR PRINT NAME) CERTIFY THAT THE CORNER LOCATION ON THIS RECORD WAS DETERMINED BY ME OR UNDER MY DIRECTION AND CONTROL AND THAT THIS U.S. PUBLIC LAND SURVEY MONUMENT RECORD IS CORRECT AND COMPLETE TO THE BEST OF MY KNOWLEDGE AND BELIEF.

David L. Osterbrink  
 SIGNATURE

10-18-98  
 DATE



INDEX NO. M-19





