

U.S. PUBLIC LAND SURVEY MONUMENT RECORD

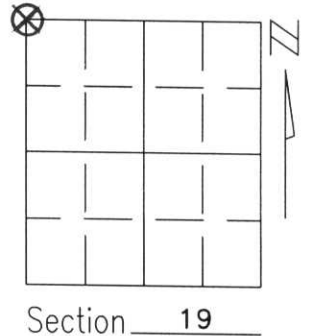
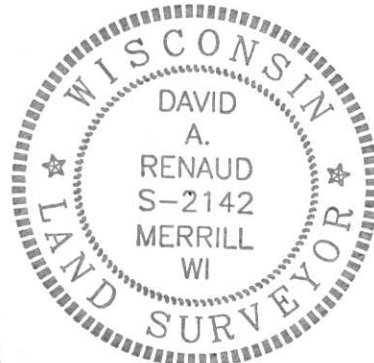
Note: This form is intended and designed to fulfill all requirements of Wisconsin Administrative Code, Chapter A-E 5.02, U.S. Public Land Survey Monument Record (3)(a)(b)(c)(d)(e)(f)(g)(h)(i). An additional sheet may be added if necessary to conform with said requirements.

(a) Corner location: Township 31 North

Range 8 East

Town/City/Village PINE RIVER

County LINCOLN

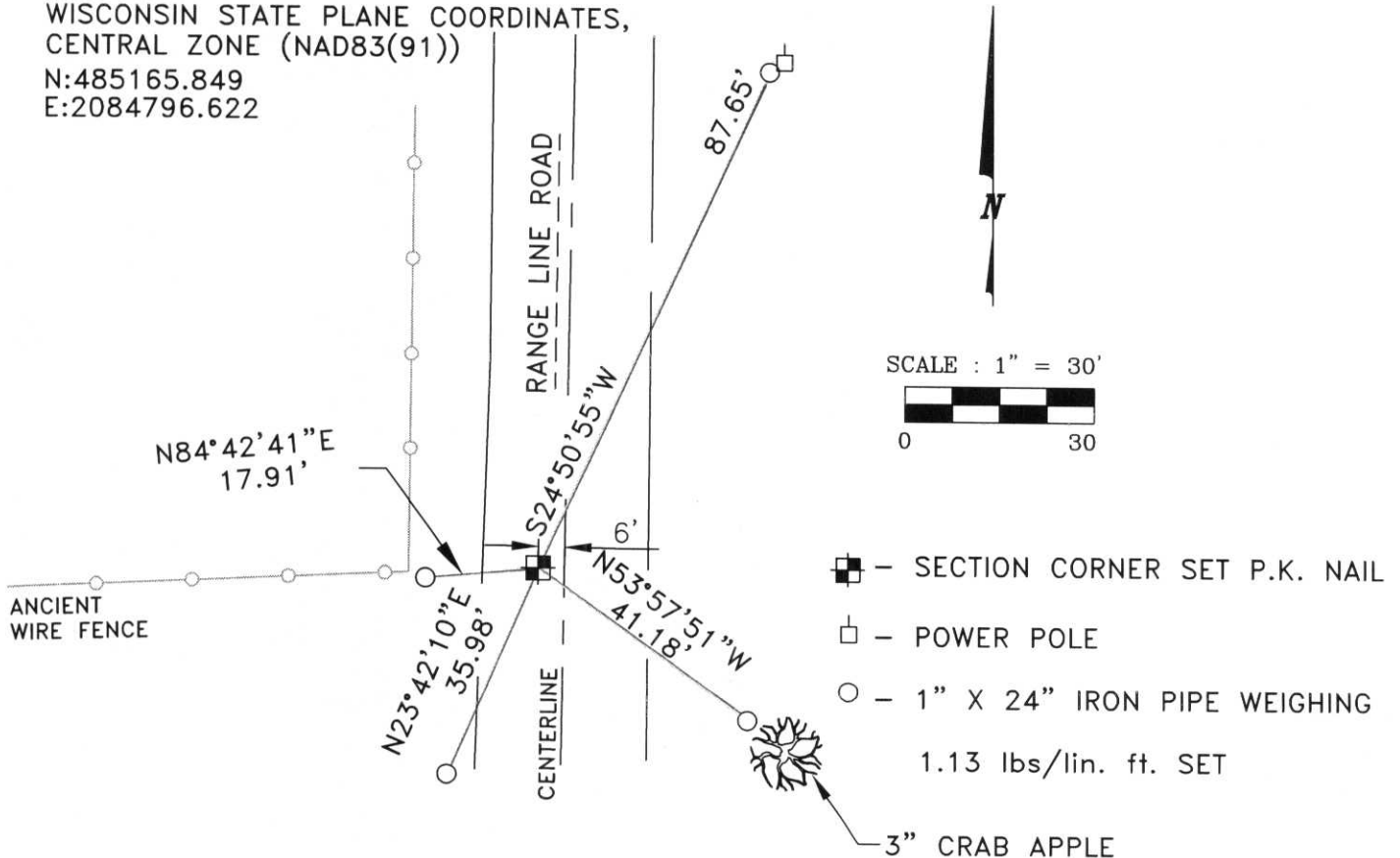


(b)(f)(g)(h) Description of monument found at this corner and if it was accepted, state all evidence (material, testimonial, occupational, plats, records, other monuments) used as a basis for accepting. If not accepted or if nothing was found, state evidence used as basis for establishing location. If reestablished through lost corner proportionate methods, indicate all monuments, distances and directions used to establish.

I HEARD FROM A LONG TIME LOCAL RESIDENT THAT A STONE MONUMENT BELIEVED TO BE AT THE CORNERS ORIGINAL LOCATION HAD BEEN REMOVED DURING ROAD CONSTRUCTION. HE STATED THAT THE STONE HAD BEEN ABOUT 6' WEST OF THE CENTERLINE OF RANGE LINE ROAD. I ACCEPTED THIS TESTIMONY AND AN OLD FENCE LINE RUNNING WEST FROM THE ROAD AS THE BEST AVAILABLE EVIDENCE OF THE CORNER'S ORIGINAL LOCATION.

(c)(d)(e) Plan view of corner with ties to at least 4 witness monuments. If in disagreement with previously established corner, show the distances between the two corners and also indicate the ties to the disputed corner.

WISCONSIN STATE PLANE COORDINATES,
CENTRAL ZONE (NAD83(91))
N:485165.849
E:2084796.622



(i) I, DAVID A. RENAUD, WI RLS S-2142
certify that the corner location on this record was determined by me or under my direction and control and that this U.S. Public Land Survey Monument Record is correct and complete to the best of my knowledge and belief.

David A. Renaud 11/2/99
Signature Date

RECEIVED AT LINCOLN COUNTY
COURTHOUSE THIS 3rd DAY
OF Nov 19 99
Pat Pribe
LAND INFORMATION OFFICE

M-1

REMARKS

103 GDS 17
 201 PK FD SW SEC 19
 202 E 1/4 W
 203 E 1/4 E
 204 TP PK SW RUM ANGELOINE + CENTER
 205 PK FD. EBY SEC 19
 206 E 1/4 E
 207 TP PK
 208 TP PK
 209 E 1/4 E
 210 TP PK NORTH SIDE OF CENTER RD.
 211 TP 600
 212 TP 600
 214 SC STAKE FD AT N OF 19

Talk to
 County Surveyor

SW CORNER SEC 19 -
 Dug a 6" x 6" concrete stake 1/5' -
 Found stake 4' x 4' x 1/2'
 Below stake
 Base of stake with pins
 over the top of the stake

AT CENTER SECTION

8/25/19 - WEST 1/4 SEC 19 -
 TERNING or VICTOR ALEXANDER
 REMEMBERS THE STAKE BEING LOCATED
 IN 1952. THE STAKE WAS LOCATED
 6' WEST OF E (LUSTON), AND DID
 NOT DIG BECAUSE VERN REMEMBERS THE
 STAKE BEING REMOVED
 BY D. H. HARRISON