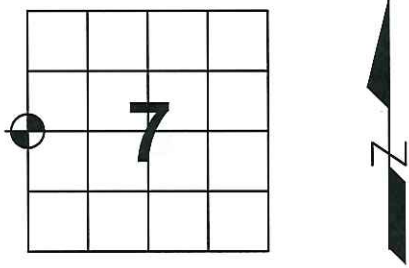


U.S. PUBLIC LAND SURVEY MONUMENT RECORD

Note: This form is intended and designed to fulfill all requirements of Wisconsin Administrative Code, Chapter A-E 7.08, U.S. Public Land Survey Monument Record (3) (a) (b) (c) (d) (e) (f) (g) (h) (i). An additional sheet may be added if necessary to conform with said requirements.

(a) Corner location: Township 31 North
 Range 8 East
 Town/City/Village Pine River
 County Lincoln



(b) (f) (g) (h) Description of monument found at this corner and if it was accepted, state all evidence (material, testimonial, occupational, plats, records, other monuments) used as basis for accepting. If not accepted or if nothing was found, state evidence used as basis for establishing location. If reestablished through lost corner proportionate methods, indicate all monuments, distances and directions used to establish.

July 1851 – Marsh, James M. Set post for Quarter Section Corner. Birch 9 S19°E 33 lks
 Birch 7 S52°E 10 lks
 Birch 8 N72°W 30 lks
 Birch 8 N18°W 33 lks

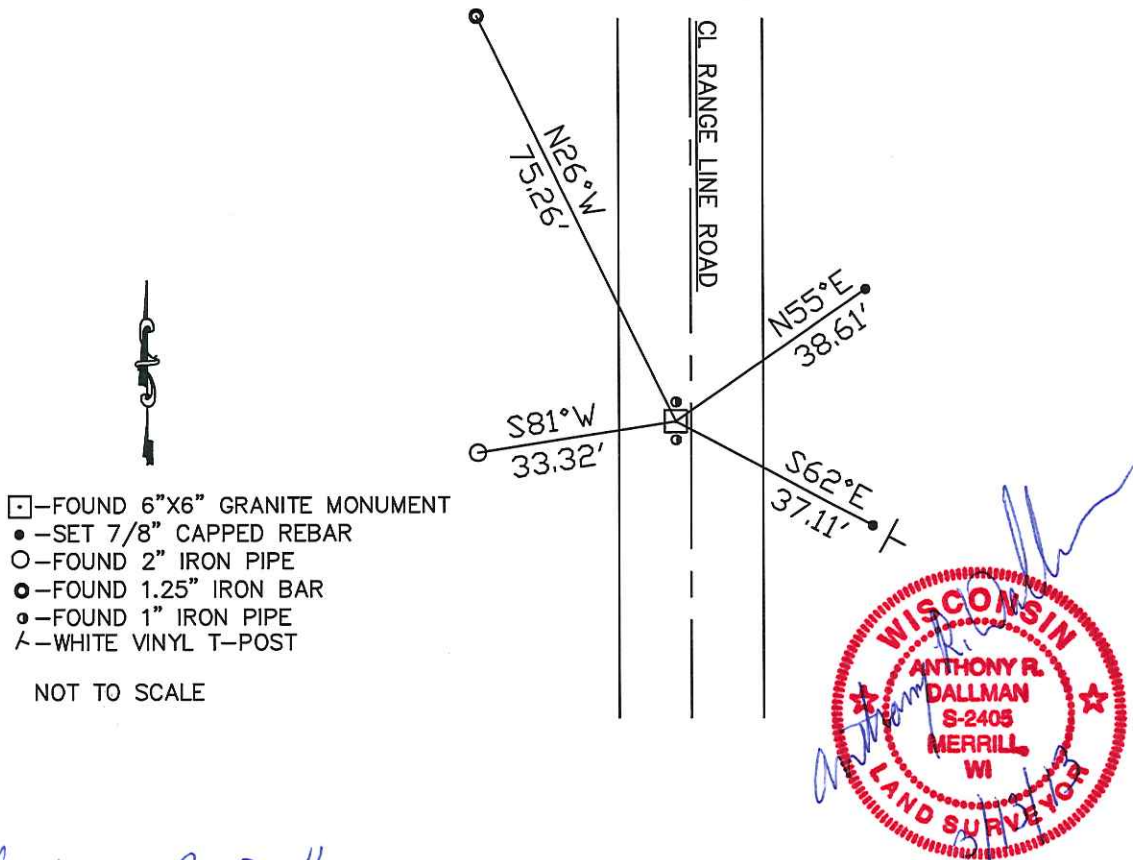
Feb. 1975 – Kelly, William F. Located 6"X6" Granite Monument in field. Set two 1"x30" iron pipes alongside stone. Set Berntsen Monument 1' North of stone as witness.

Aug. 1994 – Abendroth, Edwin R. Found granite stone monument in place in field.

Oct. 1998 – Aero-Metric reported ties are gone.

May 2012 – Dallman, Anthony R. Found 6"X6" Granite Monument 2' west of CL Range Line Rd. Down 26" from road surface with an iron pipe on the North and South sides of stone. Witnessed as shown below:

(c) (d) (e) Plan view of corner with ties to at least 4 witness monuments. If in disagreement with previously established corner, show the distance between the two corners and also indicate the ties to the disputed corner.



(i) I, Anthony R. Dallman

(type or print name) certify that the corner location on this record was determined by me or under my direction and control and that this U.S. Public Land Survey Monument Record is correct and complete to the best of my knowledge and belief.

Anthony R. Dallman
 Signature

3/13/13
 Date

Index No. 9-1

U.S. PUBLIC LAND SURVEY MONUMENT RECORD

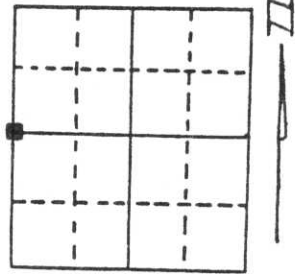
Note: This form is intended and designed to fulfill all requirements of Wisconsin Administrative Code, Chapter A-E 5.02, U.S. Public Land Survey Monument Record (3) (a) (b) (c) (d) (e) (f) (g) (h) (i). An additional sheet may be added if necessary to conform with said requirements.

(a) Corner location: Township 31 North

Range 8 East

Town/City/Village Pine River

County Lincoln



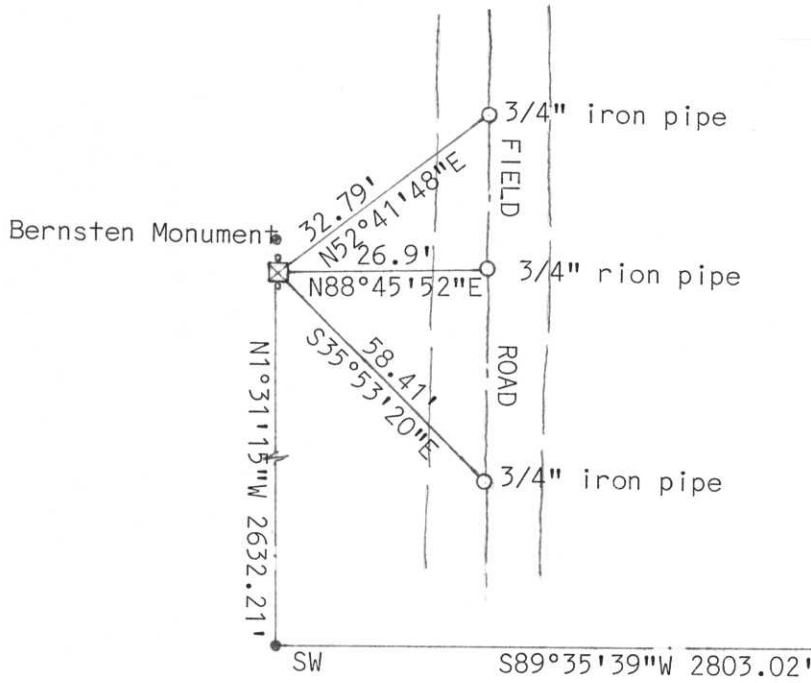
Section 7

(b) (f) (g) (h) Description of monument found at this corner and if it was accepted, state all evidence (material, testimonial, occupational, plats, records, other monuments) used as a basis for accepting. If not accepted or if nothing was found, state evidence used as basis for establishing location. If reestablished through lost corner proportionate methods, indicate all monuments, distances and directions used to establish.

Found granite stone monument in place in corn field originally located by William Kelly.



(c) (d) (e) Plan view of corner with ties to at least 4 witness monuments. If in disagreement with previously established corner, show the distances between the two corners and also indicate the ties to the disputed corner.



*Ties gone
per Aero-Metric
10/98*

(i) I, Edwin R. Abendroth
(type or print name) certify that the corner location on this record was determined by me or under my direction and control and that this U.S. Public Land Survey Monument Record is correct and complete to the best of my knowledge and belief.

Edwin R. Abendroth August 9, 1994
Signature Date

Index No. G-1

CERTIFIED LAND CORNER RESTORATION

Index No. G-1

State of Wisconsin }
County of LINCOLN } ss.

I WILLIAM F. KELLY, do hereby certify that on the 5TH day of FEBRUARY, 1975, I found evidence of the 1/4 SECTION corner of SECTIONS 12 & 7 Township 21, North, Range 7 & 8 EAST, Fourth, Principal Meridian, as described hereon; and that from this evidence I established a new monument and accessories as described hereon to perpetuate the original location of this corner.

Resident witnesses:

WALTER ZAHN

History of original corner establishment:
GRANITE STONE SET
IN THE 1920'S

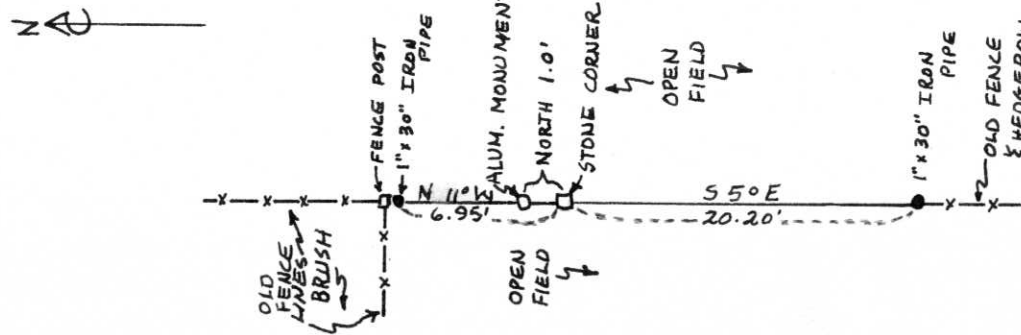
Description of corner evidence found:

LOCATED 6" x 6" GRANITE STONE MARKED 1/4 S.



William F. Kelly

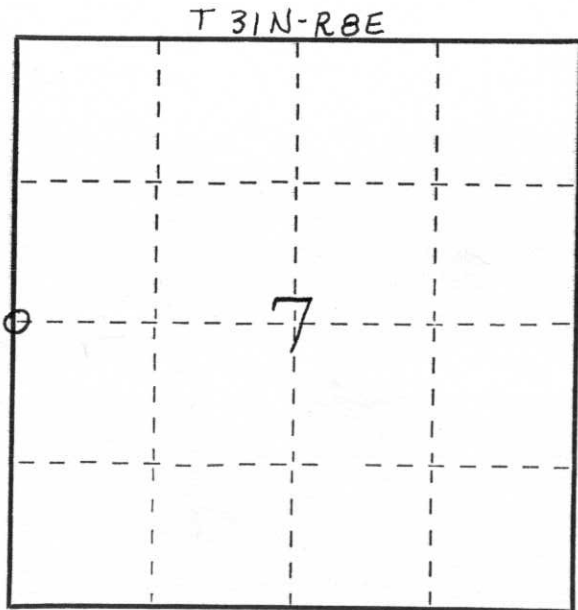
Description of monument and accessories I established to perpetuate the original location of this corner.



ALUM. MONUMENT MARKED:



SET NEW ALUM. MON. 1 FT. NORTH OF CORNER AS WITNESS CORNER TO STONE. ALSO SET 2 - 1" x 30" IRON PIPES AS WITNESS MARKERS TO STONE AS NO TREES EXIST AROUND CORNER.



○ = Corner monument restored.

Dated at ELCHO, Wis., this 5TH day of FEBRUARY, 1975

Signature William F. Kelly Title REGISTERED LAND SURVEYOR Registration No. 51098
(County Surveyor, Registered Land Surveyor, or other duly authorized official)

Office of Register of Deeds, County of _____, I hereby certify that the within instrument was filed in this office for record on the _____ day of _____, 19____ at _____ o'clock _____ M.

(Register of Deeds)

By _____ Deputy





LINCOLN
COUNTY
SURVEYOR





