

# LINCOLN COUNTY U.S. PUBLIC LAND SURVEY MONUMENT LOCATION RECORD

SECTION 11  
TOWNSHIP 31 N  
RANGE 7 E

**I-19**  
NO.

LANDMARK       BENCHMARK

FOUND   
SET   
RESET   
RE-TIED

CORNER IDENTITY: SOUTH 1/4 CORNER SECTION 11 ( SNM-1 NAIL)  
LINCOLN COUNTY COORDINATE: N: 121611.2760  
E: 420606.0260

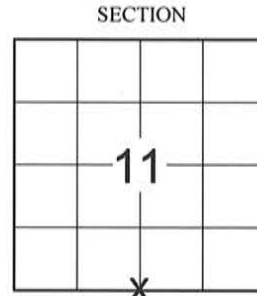
ELEVATION-(FEET): \_\_\_\_\_ DATUM: \_\_\_\_\_

WEATHER: CLEAR AND SUNNY

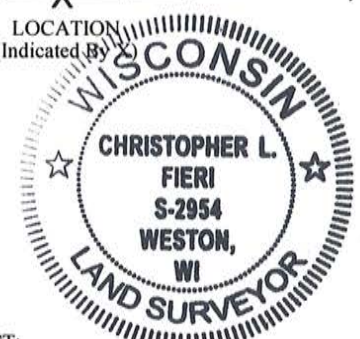
DATE OF SURVEY: 9/12/2014 TEMPERATURE: 65 °F

SURVEY PARTY: KEITH WALKOWSKI AND CHRIS FIERI

PINE RIVER  
CITY, VILLAGE, TOWN



LOCATION  
(Indicated By)



## BASIS FOR MONUMENT LOCATION:

(DESCRIBE METHOD OF SURVEY AND CORNER AUTHENTICATION)

11/15/1996 - Gary Krueger established the corner location from State Highway Plans and lines of occupation. Fit well with centerlines of "64" and Town Road.

9/15/2014 - I visited the corner location prior to the resurfacing of Highway "64" and recovered all four (4) witness monuments from the previous corner restoration form. Distances checked well. Set four (4) Berntsen SSDR-130 witness monuments and returned after construction to set a Berntsen SNM-1 Nail at the corner location.

CERTIFIED CORRECT:

*Christopher L. Fieri*

CHRISTOPHER L. FIERI S-2954

Registered Land Surveyor

DATE: 11-18-2014

FIELD BOOK NO. 41 PAGE NO. 21

COMPANY RIVERSIDE LAND SURVEYING LLC

## TIE SKETCH:

- BERNTSEN SNM-1 NAIL SET
- BERNTSEN SSDR-130 MONUMENT SET
- 1" REBAR WITH LINCOLN COUNTY CAP FOUND
- VINYL T-POST SET

RECEIVED BY LINCOLN COUNTY  
SURVEYOR THIS 4<sup>TH</sup> DAY  
OF December 2014  
*Tom Dahl*  
COUNTY SURVEYOR

SOUTHWEST CORNER  
SECTION 11, T31N, R7E



N89° 08' 52"W  
2637.25'

STATE HIGHWAY

WOODED

MAPLE ROAD

WOODED

S88° 56' 40"E

108.52'

16" SPRUCE

N21° 41' 58"W

N46° 59' 18"W

N34° 00' 24"W

102.17'

107.51'

77.35'

N22° 44' 13"E

N39° 54' 38"E

71.81'

147.62'

N89° 08' 52"W  
2637.25'

N89° 49' 00"E  
2640.09'

"64"

SOUTHEAST CORNER  
SECTION 11, T31N, R7E



BEARINGS ARE BASED ON THE LINCOLN COUNTY COORDINATE SYSTEM NAD (83) 2011 AND REFERENCED TO THE SOUTH LINE OF THE SOUTHWEST 1/4 OF SECTION 11 MEASURED TO BEAR NORTH 89°08'52" WEST

POWER POLE #3107-14W16

GATE FIELD ENTRANCE

FENCE

**I-19**  
NO.

# U.S. PUBLIC LAND SURVEY MONUMENT RECORD

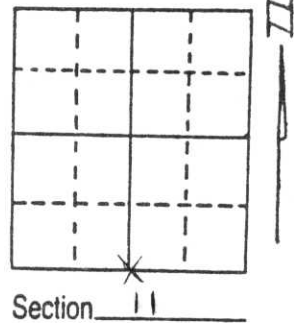
Note: This form is intended and designed to fulfill all requirements of Wisconsin Administrative Code, Chapter A-E 5.02, U.S. Public Land Survey Monument Record (3) (a) (b) (c) (d) (e) (f) (g) (h) (i). An additional sheet may be added if necessary to conform with said requirements.

(a) Corner location: Township 31 North

Range 7 East

Town/City/Village PINE RIVER

County LINCOLN



(b) (f) (g) (h) Description of monument found at this corner and if it was accepted, state all evidence (material, testimonial, occupational, plats, records, other monuments) used as a basis for accepting. If not accepted or if nothing was found, state evidence used as basis for establishing location. If reestablished through lost corner proportionate methods, indicate all monuments, distances and directions used to establish.

Did not dig for corner because of concrete and being S.T.H. "64". Corner was established from State Highway Plans and lines of occupation. PK Nail was set and tied out. Corner fits centerline of "64" and Town Road.

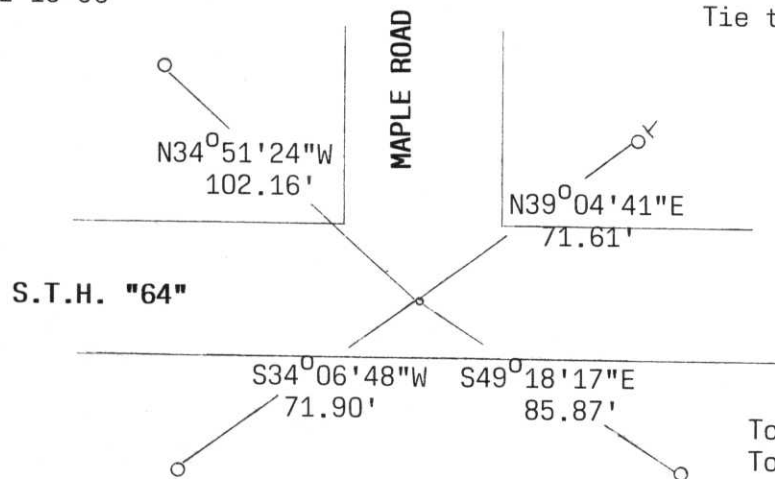
**RECEIVED AT LINCOLN COUNTY  
COURTHOUSE THIS 26th DAY  
OF Dec. 19 96  
Pat Priebe  
TAX DESCRIPTION OFFICE**

(c) (d) (e) Plan view of corner with ties to at least 4 witness monuments. If in disagreement with previously established corner, show the distances between the two corners and also indicate the ties to the disputed corner.

Ties completed 11-15-96

All ties to 7/8" x 30" Rebars  
Tie to NE has DO NOT DISTURB SIGN

No Scale



To SE Cor. N88°56'37"E, 2640.14'  
To SW Cor. S89°58'36"W, 2637.92'  
To N¼ Cor. N0°15'11"W, 5343.75'

(i) I, Gary R. Krueger RLS NO.1619  
(type or print name) certify that the corner location on this record was determined by me or under my direction and control and that this U.S. Public Land Survey Monument Record is correct and complete to the best of my knowledge and belief.

*Gary R. Krueger* 12-1996  
Signature Date



Index No. I-19