

LINCOLN COUNTY U.S. PUBLIC LAND SURVEY MONUMENT LOCATION RECORD

SECTION 11
TOWNSHIP 31 N
RANGE 7 E

1-21
NO.

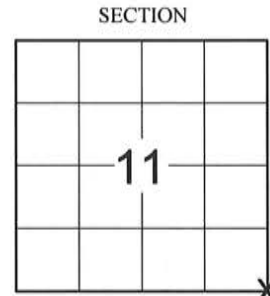
LANDMARK BENCHMARK _____

FOUND
SET
RESET
RE-TIED

CORNER IDENTITY: SOUTHEAST CORNER SECTION 11 (SNM-1 NAIL)

PINE RIVER
CITY, VILLAGE, TOWN

LINCOLN COUNTY COORDINATE: N: 121619.7190
E: 423246.1050



ELEVATION-(FEET): _____ DATUM: _____

WEATHER: CLEAR AND SUNNY

DATE OF SURVEY: 9/12/2014 TEMPERATURE: 65 °F

SURVEY PARTY: KEITH WALKOWSKI AND CHRIS FIERI

LOCATION
(Indicated By)



BASIS FOR MONUMENT LOCATION:

(DESCRIBE METHOD OF SURVEY AND CORNER AUTHENTICATION)

11/15/1996 - Gary Krueger established the corner location from State Highway Plans and lines of occupation. P.K. Nail was set at the corner location and tied out. Corner is approximately 6 feet South of the centerline of "64".

9/15/2014 - I visited the corner location prior to the resurfacing of Highway "64" and recovered a gear headed spike at the corner location. Also recovered all four (4) witness monuments from the previous corner restoration form. Distances checked well. Set four (4) Berntsen SSSDR-130 witness monuments and returned after construction to set a Berntsen SNM-1 Nail at the corner location.

CERTIFIED CORRECT:

Christopher L. Fieri

CHRISTOPHER L. FIERI S-2954

Registered Land Surveyor

DATE: 11-18-2014

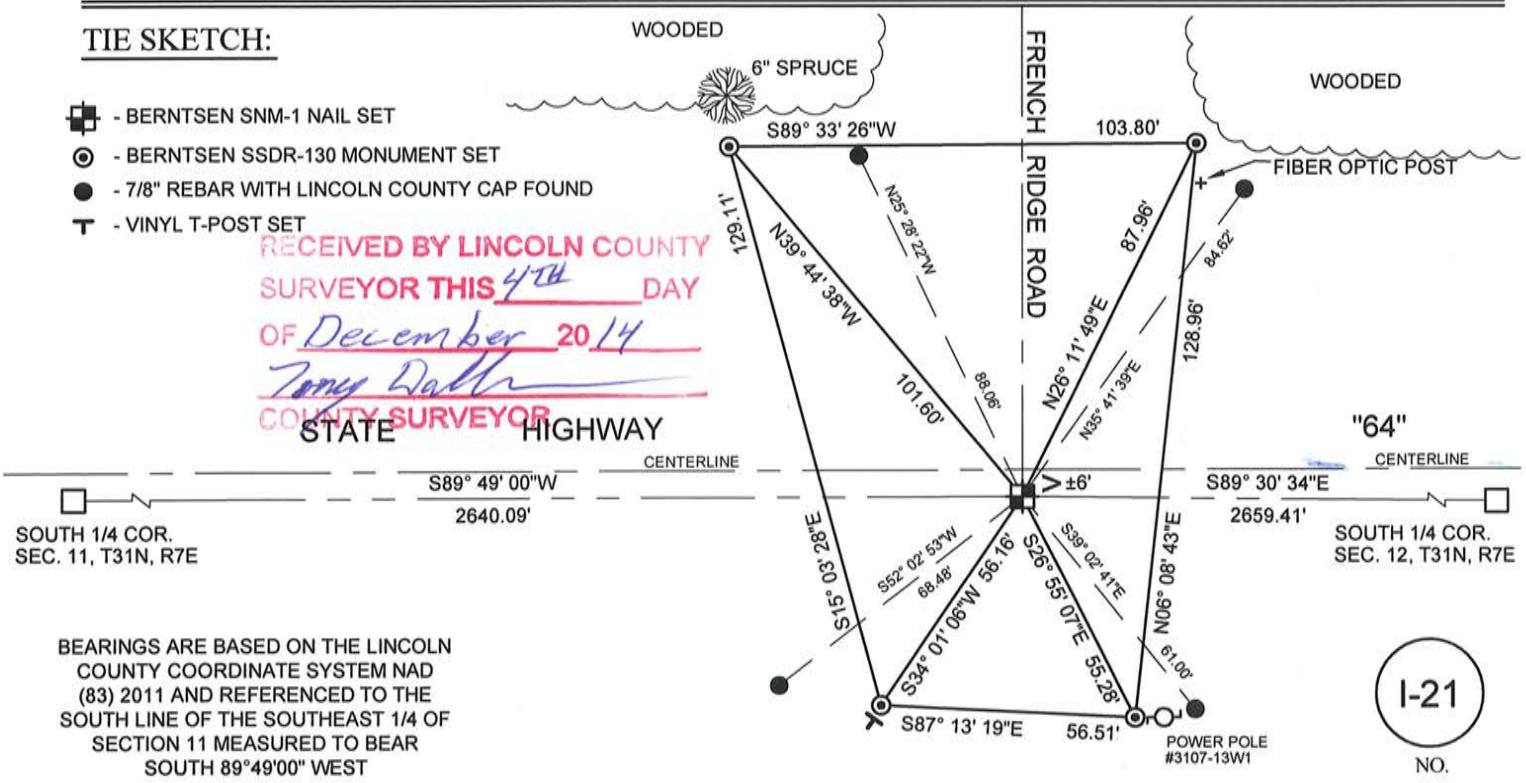
FIELD BOOK NO. 41 PAGE NO. 20

COMPANY RIVERSIDE LAND SURVEYING LLC

TIE SKETCH:

- BERNTSEN SNM-1 NAIL SET
- BERNTSEN SSSDR-130 MONUMENT SET
- 7/8" REBAR WITH LINCOLN COUNTY CAP FOUND
- VINYL T-POST SET

RECEIVED BY LINCOLN COUNTY
SURVEYOR THIS 4TH DAY
OF December 20 14
Tony Dahl
COUNTY SURVEYOR



1-21
NO.

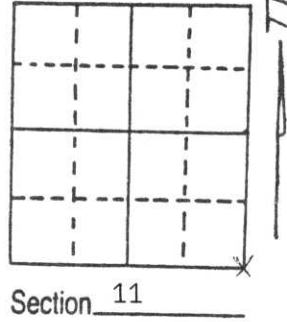
BEARINGS ARE BASED ON THE LINCOLN COUNTY COORDINATE SYSTEM NAD (83) 2011 AND REFERENCED TO THE SOUTH LINE OF THE SOUTHEAST 1/4 OF SECTION 11 MEASURED TO BEAR SOUTH 89°49'00" WEST

U.S. PUBLIC LAND SURVEY MONUMENT RECORD

Note: This form is intended and designed to fulfill all requirements of Wisconsin Administrative Code, Chapter A-E 5.02, U.S. Public Land Survey Monument Record (3) (a) (b) (c) (d) (e) (f) (g) (h) (i). An additional sheet may be added if necessary to conform with said requirements.

(a) Corner location: Township 31 North
 Range 7 East

Town/City/Village PINE RIVER
 County LINCOLN



(b) (f) (g) (h) Description of monument found at this corner and if it was accepted, state all evidence (material, testimonial, occupational, plats, records, other monuments) used as a basis for accepting. If not accepted or if nothing was found, state evidence used as basis for establishing location. If reestablished through lost corner proportionate methods, indicate all monuments, distances and directions used to establish.

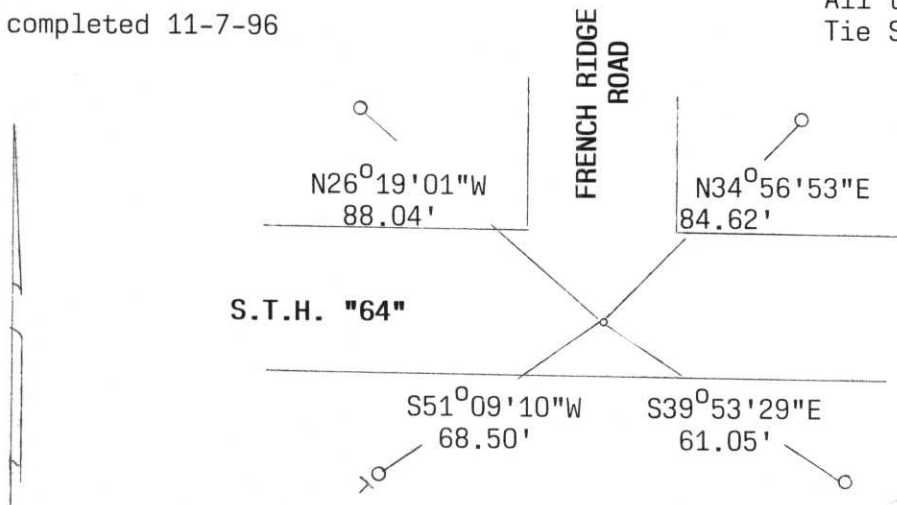
Did not dig for corner because of concrete and being S.T.H. "64". Corner was actually established from State Highway Plans and lines of occupation. PK Nail was set and tied out. Corner is approx. 6' South of centerline of "64".

**RECEIVED AT LINCOLN COUNTY
 COURTHOUSE THIS 26th DAY
 OF Dec. 1996
Pat Priebe
 TAX DESCRIPTION OFFICE**

(c) (d) (e) Plan view of corner with ties to at least 4 witness monuments. If in disagreement with previously established corner, show the distances between the two corners and also indicate the ties to the disputed corner.

Ties completed 11-7-96

All ties to 7/8" x 30" Rebars
 Tie SW has DO NOT DISTURB SIGN



No Scale

To S $\frac{1}{4}$ Cor. S88°56'37"W, 2640.14'
 To E $\frac{1}{4}$ Cor. N0°25'03"W, 2645.43'

(i) I, Gary R. Krueger, RLS NO.1619
 (type or print name) certify that the corner location on this record was determined by me or under my direction and control and that this U.S. Public Land Survey Monument Record is correct and complete to the best of my knowledge and belief.

Gary R. Krueger Signature 12-19-96 Date



Index No. I-21