

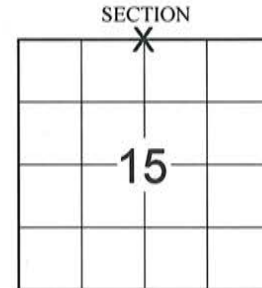
LINCOLN COUNTY U.S. PUBLIC LAND SURVEY MONUMENT LOCATION RECORD

SECTION 15
TOWNSHIP 31 N
RANGE 7 E

I-15
NO.

LANDMARK BENCHMARK FOUND
CORNER IDENTITY: NORTH 1/4 CORNER SECTION 15 (1" IRON BAR) SET
LINCOLN COUNTY COORDINATE: N: 121658.446 RE-SET
E: 415318.250 RE-TIED

PINE RIVER
CITY, VILLAGE, TOWN



ELEVATION-(FEET): _____ DATUM: _____
WEATHER: OVERCAST
DATE OF SURVEY: 9/15/2014 TEMPERATURE: 65 °F

SURVEY PARTY: KEITH WALKOWSKI AND CHRIS FIERI

BASIS FOR MONUMENT LOCATION:

(DESCRIBE METHOD OF SURVEY AND CORNER AUTHENTICATION)

6/20/1991 - David Osterbrink researched at the County Highway Department and found no information for this corner location. State Highway plans called for the section corner to fall 15 feet North of the centerline of Highway "64". Searched area with metal detector and found no evidence of the corner. Rhinelander DOT confirmed that the highway had never moved North - South. Set a 1" Iron Bar for the corner monument 15 feet North of the centerline of Highway "64" on fencelines North and South. Set witness monuments to perpetuate the corner location.

2013 - REI Engineering found the 1" Iron Bar of record laying flat by the edge of the asphalt. Recovered three (3) existing witness monuments and set a 3/4" x 24" rebar at the corner location.

9/15/2014 - I visited the corner location prior to the resurfacing of Highway "64" and recovered the Iron Bar of record. Measured to existing witness monuments which checked reasonably well. Set four (4) Berntsen witness monuments and returned after construction to confirm that the corner monument had not been disturbed.



CERTIFIED CORRECT:

Christopher L. Fieri

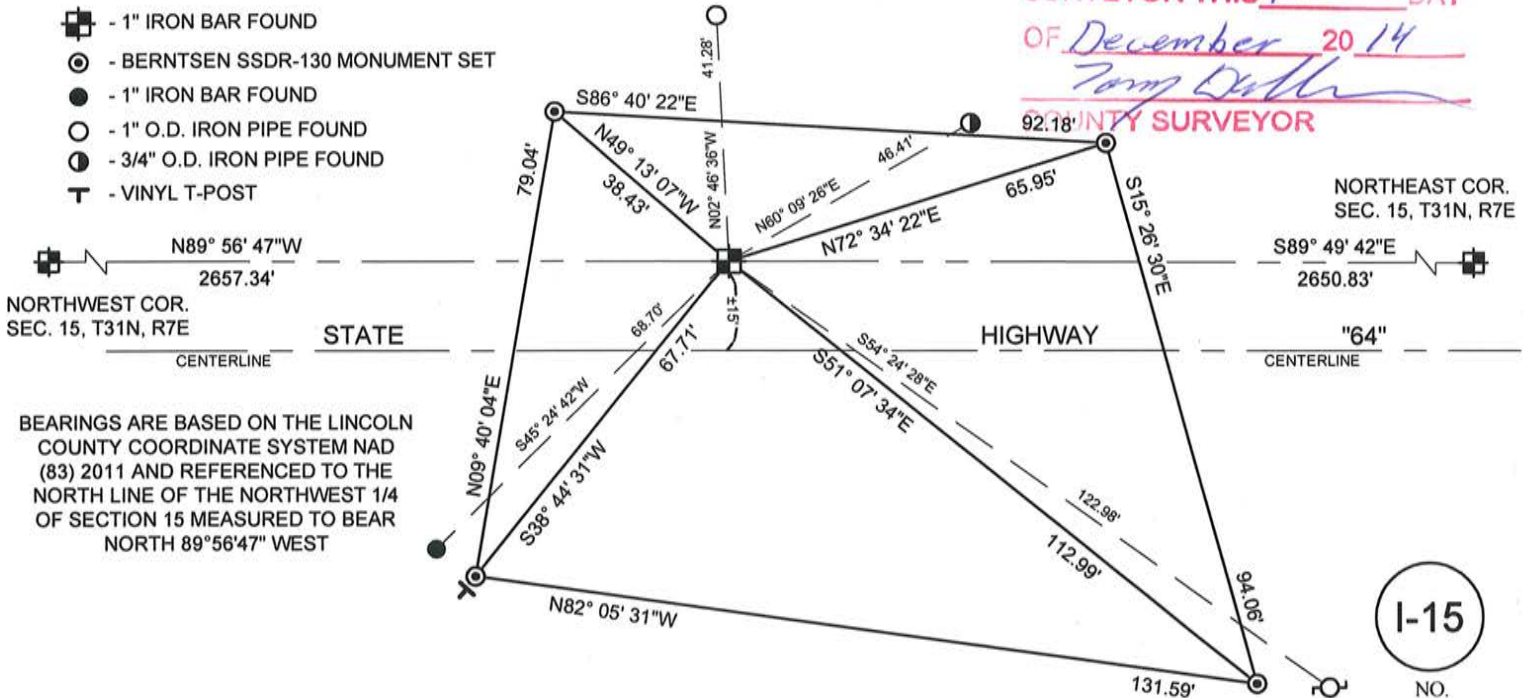
CHRISTOPHER L. FIERI S-2954

Registered Land Surveyor

DATE: 11-18-2014

TIE SKETCH:

RECEIVED BY LINCOLN COUNTY
SURVEYOR THIS 4TH DAY
OF December 20 14
Tom Diller
COUNTY SURVEYOR



BEARINGS ARE BASED ON THE LINCOLN COUNTY COORDINATE SYSTEM NAD (83) 2011 AND REFERENCED TO THE NORTH LINE OF THE NORTHWEST 1/4 OF SECTION 15 MEASURED TO BEAR NORTH 89°56'47" WEST

NORTHEAST COR.
SEC. 15, T31N, R7E

S89° 49' 42"E
2650.83'

"64"
CENTERLINE

I-15
NO.

60D NAIL FOUND IN
POWER POLE

U.S. PUBLIC LAND SURVEY MONUMENT RECORD

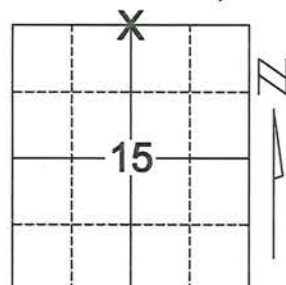
Note: This form is intended and designed to fulfill all requirements of Wisconsin Administrative Code, Chapter A-E 7.08, U.S. Public Land Survey Monument Record (3)(a)(b)(c)(d)(e)(f)(g)(h)(i). An additional sheet may be added if necessary to conform with said requirements.

(a) Corner location: Township 31 North

Range 7 East

Town/City/Village PINE RIVER

County LINCOLN



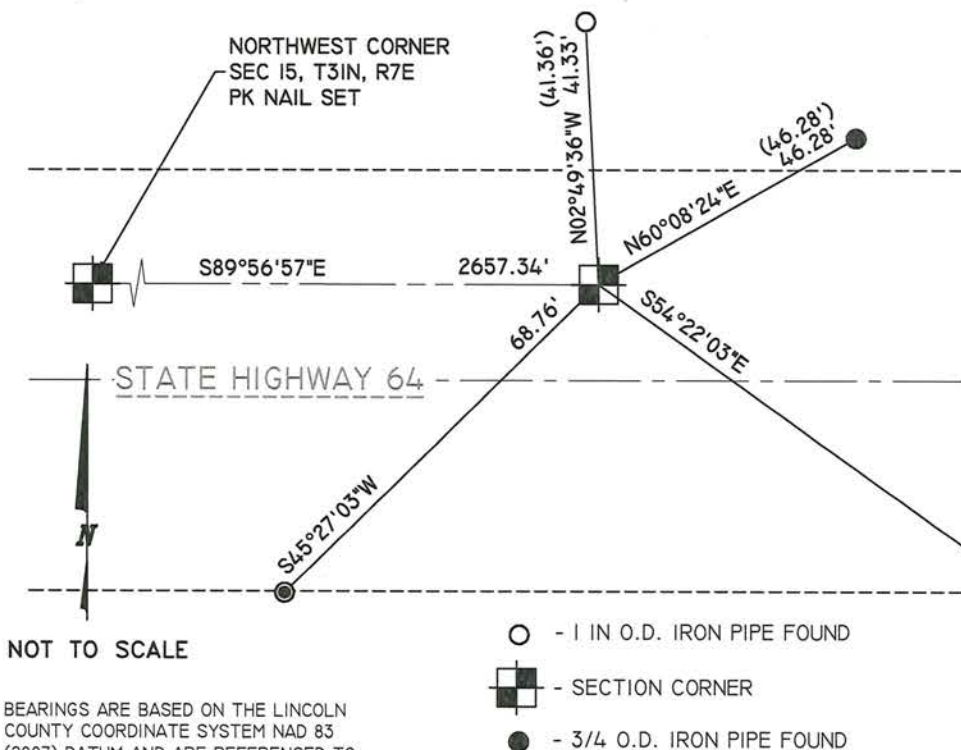
Section 15

(b)(f)(g)(h) Description of monument found at this corner and if it was accepted, state all evidence (material, testimonial, occupational, plats, records, other monuments) used as a basis for accepting. If not accepted or if nothing was found, state evidence used as basis for establishing location. If reestablished through lost corner proportionate methods, indicate all monuments, distances and directions used to establish.

1991- DAVID OSTERBRINK RESEARCHED COUNTY HIGHWAY DEPARTMENT AND HAD NO RECORD OF CORNER IN THIS AREA. STATE HIGHWAY PLANS CALLED FOR SECTION CORNER TO BE 15 FEET NORTH OF CENTER LINE. CHECKED AREA WITH MAGNETIC LOCATOR, RE-BARS IN CONCRETE MADE IT IMPOSSIBLE TO PICK UP ANY IRONS, RR SPIKES, ETC. TALKING WITH RHINELANDER DOT, THEY SAID PLANS SHOW HIGHWAY WAS NEVER MOVED NORTH-SOUTH. SET CORNER 15 FEET NORTH OF EXISTING CENTER LINE OF PAVEMENT, ON FENCE LINES TO NORTH AND SOUTH OF HIGHWAY.

2013- REI ENGINEERING FOUND IRON BAR LAYING FLAT BY EDGE OF ASPHALT. FOUND 3 EXISTING TIES AND SET A 3/4 INCH X 24 INCH REBAR FOR CORNER. ALSO SET A 1 INCH BY 18 INCH IRON BAR SOUTHWEST OF CORNER FOR THE WITNESS TIE.

(c)(d)(e) Plan view of corner with ties to at least 4 witness monuments. If in disagreement with previously established corner, show the distances between the two corners and also indicate the ties to the disputed corner.



NOT TO SCALE

BEARINGS ARE BASED ON THE LINCOLN COUNTY COORDINATE SYSTEM NAD 83 (2007) DATUM AND ARE REFERENCED TO THE NORTH LINE OF THE NORTHWEST 1/4 MEASURED TO BEAR SOUTH 89°56'57" EAST.

- - 1 IN O.D. IRON PIPE FOUND
- ◻ - SECTION CORNER
- - 3/4 O.D. IRON PIPE FOUND
- △ - 60D NAIL IN POWER POLE FOUND
- ⊙ - 1 IN O.D. X 18 IN IRON BAR SET

(i) I, Joshua W. Prentice, RLS S-2852, certify that the corner location on this record was determined by me or under my direction and control and that this U.S. Public Land Survey Monument Record is correct and complete to the best of my knowledge and belief.

RECEIVED BY LINCOLN COUNTY SURVEYOR THIS 20TH DAY OF January 20 14
Tommy Dalby
 COUNTY SURVEYOR

[Signature]
 Signature _____ Date 1-16-2014

Index No. I-15

U.S. PUBLIC LAND SURVEY MONUMENT RECORD

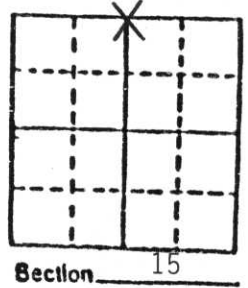
Note: This form is intended and designed to fulfill all requirements of Wisconsin Administrative Code, Chapter A-E 5.02, U.S. Public Land Survey Monument Record (3) (a) (b) (c) (d) (e) (f) (g) (h) (i). An additional sheet may be added if necessary to conform with said requirements.

(a) Corner location: Township 31 North

Range 7 East

Town PINE RIVER

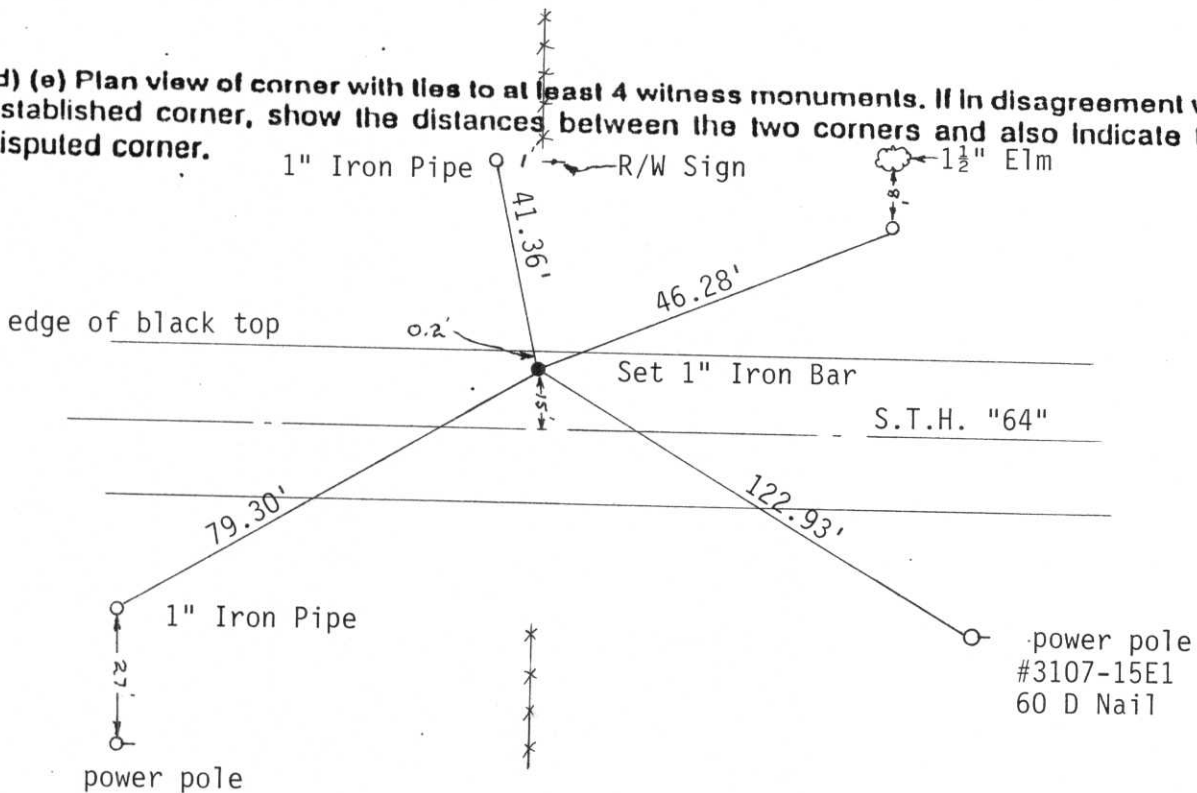
County LINCOLN



b) (f) (g) (h) Description of monument found at this corner and if it was accepted, state all evidence (material, testimonial, occupational, plats, records, other monuments) used as a basis for accepting. If not accepted or if nothing was found, state evidence used as basis for establishing location. If reestablished through lost corner proportionate methods, indicate all monuments, distances and directions used to establish.

County Highway Department had no record of corner in this area. State Hwy. plans called for Section Corner to be 15' North of center line. Checked area with magnetic locator, re-bars in concrete made it impossible to pick up any irons, RR spikes etc. Talking with Rhinelander DOT, they said plans show Highway was never moved North-South. Set corner 15' North of existing center line of pavement, on fence lines to North and South of Highway.

c) (d) (e) Plan view of corner with ties to at least 4 witness monuments. If in disagreement with previously established corner, show the distances between the two corners and also indicate the ties to the disputed corner.



(i) I, David L. Osterbrink
 (type or print name) certify that the corner location on this record was determined by me or under my direction and control and that this U.S. Public Land Survey Monument Record is correct and complete to the best of my knowledge and belief.

David L. Osterbrink 6-20-91
 Signature Date



Index No. I-15

RECEIVED JUN 25 1991