

# LINCOLN COUNTY U.S. PUBLIC LAND SURVEY MONUMENT LOCATION RECORD

SECTION 16  
TOWNSHIP 31 N  
RANGE 7 E

I-11  
NO.

LANDMARK       BENCHMARK      FOUND   
CORNER IDENTITY: NORTH 1/4 CORNER SECTION 16 (SNM-1 NAIL)      SET   
RESET   
RE-TIED

LINCOLN COUNTY COORDINATE: N: 121622.3600'  
E: 410016.8110'

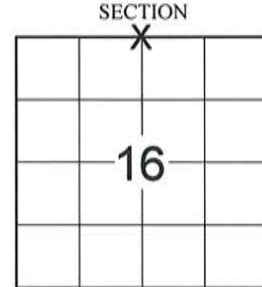
ELEVATION-(FEET): \_\_\_\_\_ DATUM: \_\_\_\_\_

WEATHER: CLEAR AND SUNNY

DATE OF SURVEY: 9/15/2014 TEMPERATURE: 65 °F

SURVEY PARTY: KEITH WALKOWSKI AND CHRIS FIERI

PINE RIVER  
CITY, VILLAGE, TOWN



LOCATION  
(Indicated By)



**BASIS FOR MONUMENT LOCATION:**  
(DESCRIBE METHOD OF SURVEY AND CORNER AUTHENTICATION)  
1852 - A.G. Ellis established the original corner.

11/6/2005 - David Goslin re-established this corner using Highway "64" right-of-way information from Division Job Number 7069 and single proportionate measure. He set a Berntsen Survey Marker Nail at the corner and set four (4) witness monuments to perpetuate it's location.

9/15/2014 - I visited the corner location prior to the resurfacing of Highway "64" and recovered the survey nail of record. Recovered all four (4) witness monuments and checked the record distances from the previous corner restoration form. Set four (4) Berntsen SSDR-130 witness monuments and returned after construction to set a Berntsen SNM-1 Nail at the corner location.

CERTIFIED CORRECT:

*Christopher L. Fieri*

CHRISTOPHER L. FIERI S-2954

Registered Land Surveyor

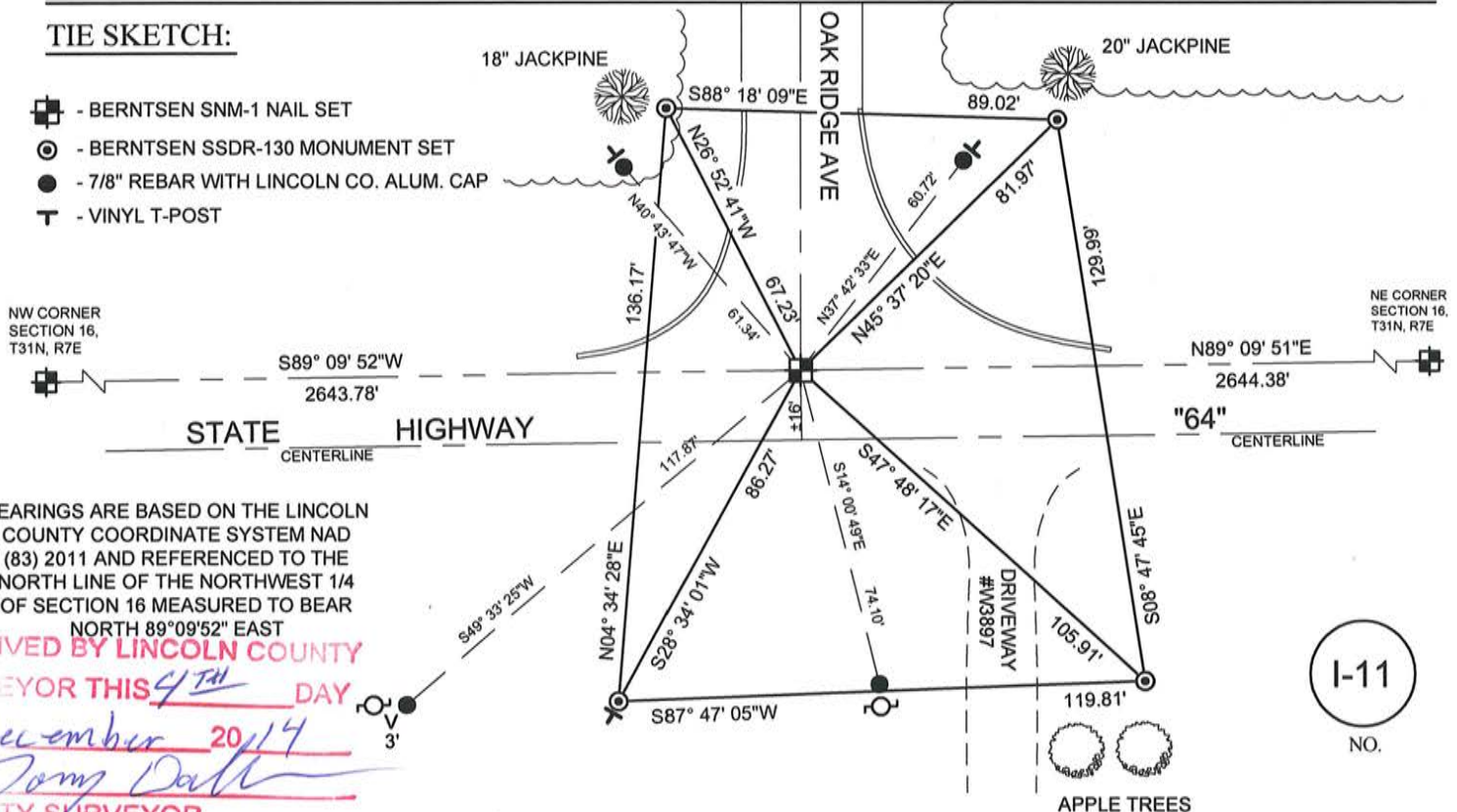
DATE: 11-18-2014

FIELD BOOK NO. 41 PAGE NO. 23

COMPANY RIVERSIDE LAND SURVEYING LLC

## TIE SKETCH:

- BERNTSEN SNM-1 NAIL SET
- BERNTSEN SSDR-130 MONUMENT SET
- 7/8" REBAR WITH LINCOLN CO. ALUM. CAP
- VINYL T-POST



BEARINGS ARE BASED ON THE LINCOLN COUNTY COORDINATE SYSTEM NAD (83) 2011 AND REFERENCED TO THE NORTH LINE OF THE NORTHWEST 1/4 OF SECTION 16 MEASURED TO BEAR NORTH 89°09'52" EAST

RECEIVED BY LINCOLN COUNTY  
SURVEYOR THIS 4TH DAY  
OF December 20 2014  
*Jerry Dahl*  
COUNTY SURVEYOR

I-11  
NO.

