

EYING, IN

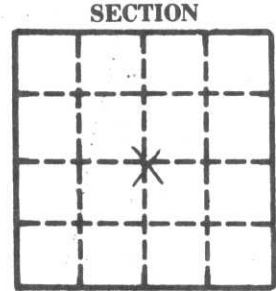
SURVEY MONUMENT LOCATION RECORD

SECTION 8
TOWNSHIP 31
RANGE 7E
LINCOLN
[CITY, VILLAGE, COUNTY]

LANDMARK BENCHMARK

FOUND
SET
RE-SET
RE-TIED

CORNER IDENTITY RR SPIKE
DATE OF SURVEY OCT. 6 1976
WEATHER CLOUDY & COOL
TEMPERATURE 45°
SURVEY PARTY D. FLUSTY M. HENRICH'S



SECTION
LOCATION
[INDICATED BY X]

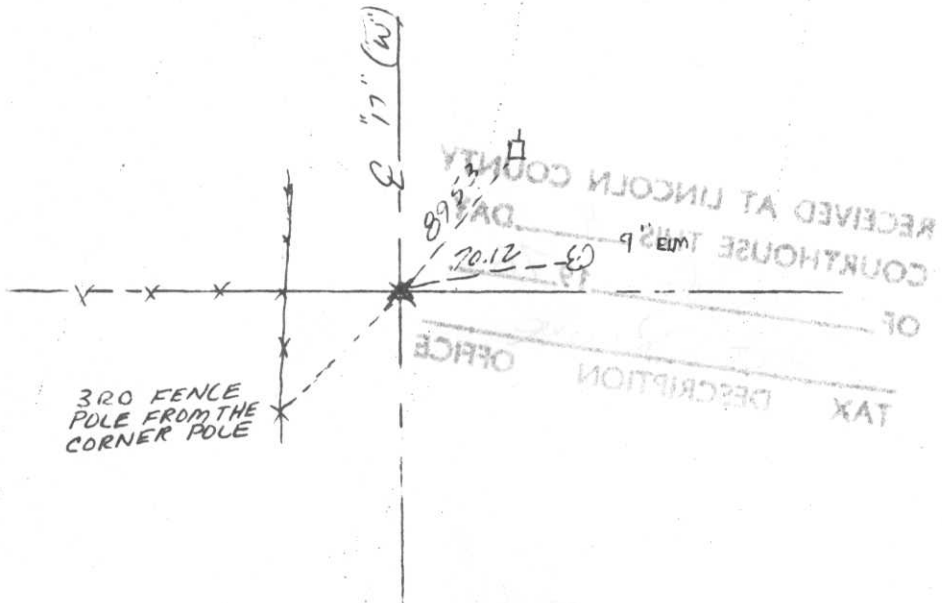


BASIS FOR MONUMENT LOCATION

DESCRIBE METHOD OF SURVEY AND CORNER AUTHENTICATION

TIE SKETCH

SHOW HORIZONTAL TIE DISTANCES TO FIXED WITNESS MONUMENTS. DESCRIBE ALL MONUMENTS FOUND OR SET.



RECEIVED AT LINCOLN COUNTY
COURTHOUSE THIS 9
DAY 10 1976
TAX DESCRIPTION OFFICE