

# U.S. PUBLIC LAND SURVEY MONUMENT RECORD

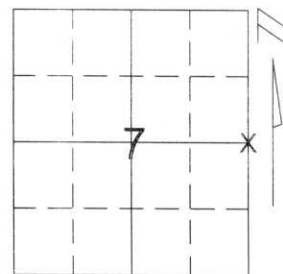
Note: This form is intended and designed to fulfill all requirements of Wisconsin Administrative Code, Chapter A-E 5.02, U.S. Public Land Survey Monument Record (3)(a)(b)(c)(d)(e)(f)(g)(h)(i). An additional sheet may be added if necessary to conform with said requirements.

(a) Corner location: Township 31 North

Range 7 East

Town/City/Village MERRILL

County LINCOLN



Section 7

(b)(f)(g)(h) Description of monument found at this corner and if it was accepted, state all evidence (material, testimonial, occupational, plats, records, other monuments) used as a basis for accepting. If not accepted or if nothing was found, state evidence used as basis for establishing location. If reestablished through lost corner proportionate methods, indicate all monuments, distances and directions used to establish.

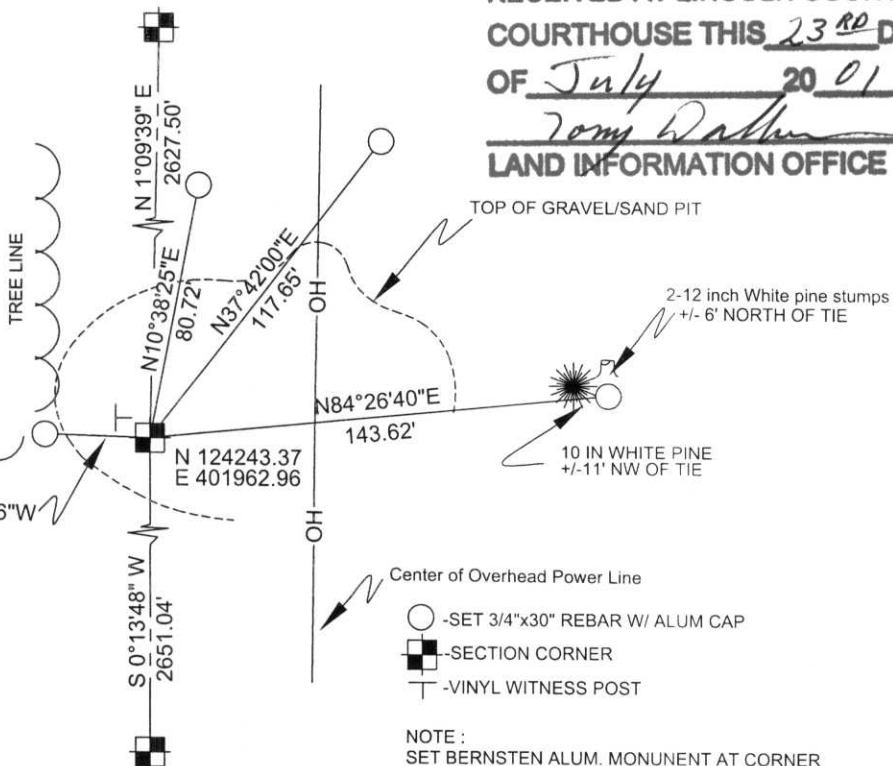
THIS CORNER HAD BEEN TIED OUT BY SHERIDAN SCHWARK IN 1975. DUE TO MINING OPERATIONS, ALL EVIDENCE OF THE CORNER AND ITS ACCESSORIES HAD BEEN DESTROYED. I COMPUTED THE LOCATION OF THE CORNER FROM SURVEYS (ON FILE AT THE LINCOLN COUNTY SURVEYOR'S OFFICE) BY SCHWARK AND OTHERS. THIS COMPUTED LOCATION FIT WELL WITH SURVEYS IN BOTH THE SOUTHEAST AND NORTHEAST 1/4s OF SECTION 7 THAT SHOWED TIES TO THE SOUTHEAST AND NORTHEAST SECTION CORNERS. I ACCEPTED THIS COMPUTED LOCATION AS THE BEST AVAILABLE EVIDENCE OF THE CORNER'S ORIGINAL LOCATION. I SET AND TIED OUT THE CORNER AS SHOWN BELOW.

(c)(d)(e) Plan view of corner with ties to at least 4 witness monuments. If in disagreement with previously established corner, show the distances between the two corners and also indicate the ties to the disputed corner.

COORDINATES AND BEARINGS ARE REFERENCED TO THE LINCOLN COUNTY COORDINATE SYSTEM AS DEVELOPED BY THE WISCONSIN DEPARTMENT OF TRANSPORTATION AND WERE DETERMINED BY GPS OBSERVATIONS ON CONTROL POINTS AS SUPPLIED BY THE WDOT.

NORTH

1" = 60'



RECEIVED AT LINCOLN COUNTY  
COURTHOUSE THIS 23<sup>RD</sup> DAY  
OF July 20 01  
Tom Dabbs  
LAND INFORMATION OFFICE

NOTE :  
SET BERNSTEN ALUM. MONUMENT AT CORNER

(i) I, DAVID A. RENAUD

(type or print name) certify that the corner location on this record was determined by me or under my direction and control and that this U.S. Public Land Survey Monument Record is correct and complete to the best of my knowledge and belief.

David A. Renaud 6/25/01  
Signature Date



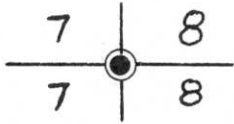
Index No. G-5

# U. S. PUBLIC LAND SURVEY MONUMENT RECORD

**INSTRUCTIONS:** This record shall show the location of the corner and shall include all of the following nine elements (a through i).

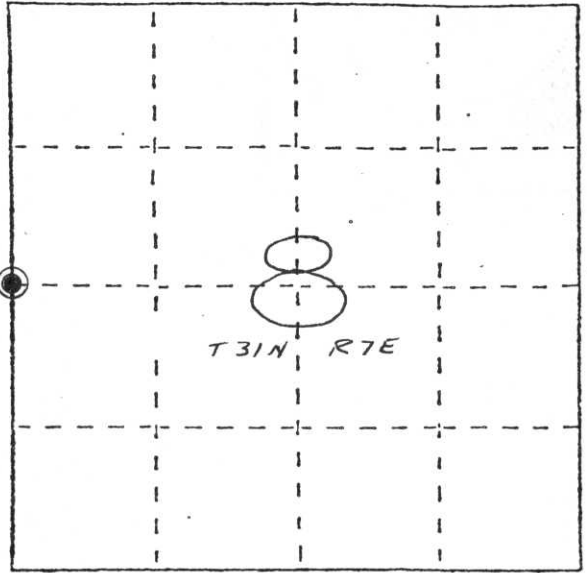
(a) Identify the corner by reference to the U.S. public land survey system.

● = Corner monument restored.



West 1/4 Corner of Section 8,  
T31N, R7E, Lincoln County,  
Wisconsin

Date of Survey: April 6, 1988

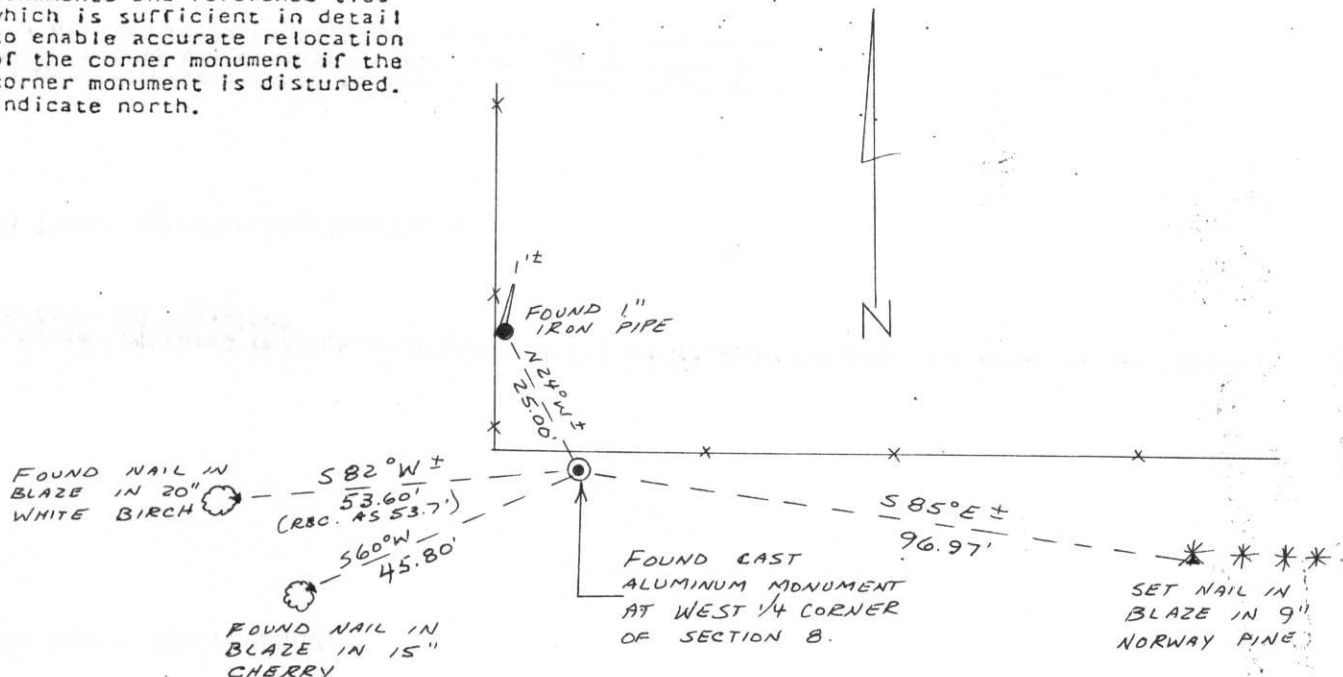


(b) Describe any record evidence, monument evidence, occupational evidence, testimonial evidence or any other material evidence you considered, and whether the monument was found or placed.

I found a cast aluminum monument at the West 1/4 corner of Section 8, T31N, R7E, and 3 of the 4 ties as established by Sheridan D. Schwark on December 4, 1975. I accepted this location and added a 4th tie as shown below.

(c) In the plan view drawing below, provide reference ties to at least 4 witness monuments, or, if the location is within a municipality, to at least 2 witness monuments. (Witness monuments shall be made of concrete, natural stone, iron or other equally durable material.) Describe witness monuments.

(d) Show a plan view drawing depicting the relevant monuments and reference ties which is sufficient in detail to enable accurate relocation of the corner monument if the corner monument is disturbed. Indicate north.



(e) Describe any material discrepancy between the location of the corner as restored or reestablished and the location of that corner as previously restored or reestablished by distance and direction. Show the discrepancy on the plan view drawing under (d), above. Show the distances between the corner as previously restored or reestablished and (1) the corner as restored or reestablished, and (2) to at least 2 of the witness monuments shown on the drawing in (d), above.

No known discrepancy.

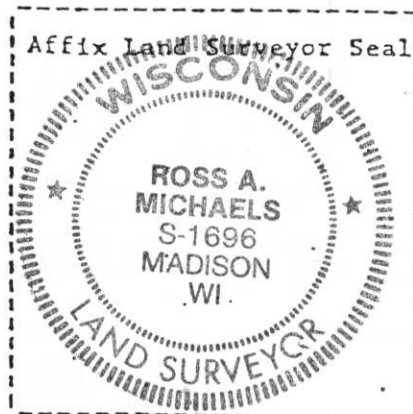
(f) Was the corner restored through acceptance of (1) an obliterated evidence location, or, (2) a found perpetuated location?

A found perpetuated location.

(g&h) Was the corner reestablished through lost corner proportionate methods? If so, show the method, including the directions and distances to other public land survey corners used as evidence or used for proportioning in determining the corner location?

Not a lost corner.

RECEIVED AT LINCOLN COUNTY  
COURTHOUSE THIS 20 DAY  
OF May 1988  
TAX DESCRIPTION OFFICE  
*Pat Mabe*



(1) I, Ross A. Michaels  
(type or print name) certify that the corner location shown on this record was determined by me or under my direction and control and that this U.S. Public Land Survey Monument Record is correct and complete to the best of my knowledge and belief.

*hals*

1988

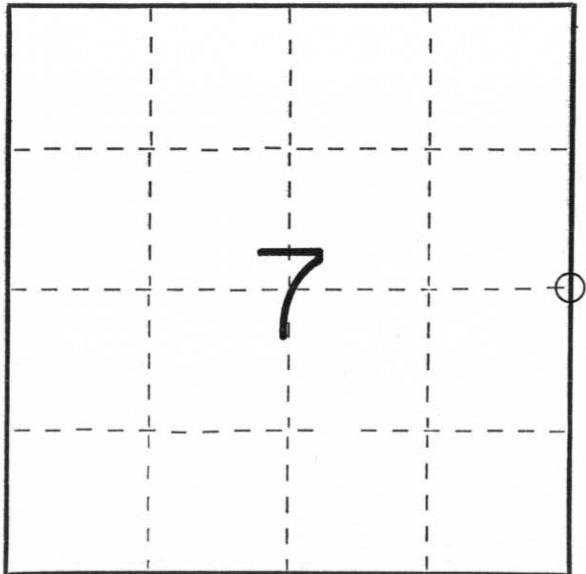
CERTIFIED LAND CORNER RESTORATION

Index No. G-5

State of Wisconsin }  
County of LINCOLN } ss.

I Sheridan D. Schwark, do hereby certify that on the 4th day of December, 19 75, I found evidence of the East one-quarter corner of Section 7 Township 31, North, Range 7 East, Fourth, Principal Meridian, as described hereon; and that from this evidence I established a new monument and accessories as described hereon to perpetuate the original location of this corner.

Resident witnesses:  
.....  
.....  
.....



○ = Corner monument restored.

History of original corner establishment:

Original Surveyors: A.G. & L.G. Ellis  
Date of Original Survey: March, 1852  
Original Bearing Trees: Hemlock 18" S14°W, 10 lks.  
Pine 16" S47°E, 30 lks.

Description of corner evidence found:

I checked and found no remains of an original corner post or any bearing trees. After further research, I felt that the best available evidence was an old fenceline from the West which fit an existing stone monument at the center one-quarter and also lined up with existing streets West of the center one-quarter, and a fence line to the North which was located on the 1935 highway map when S.T.H. "17" was reworked. The position of this fence seems to meander to the West at the southern portion of the half mile; therefore I extended the straight section South to establish the East one-quarter corner.

Description of monument and accessories I established to perpetuate the original location of this corner.

Set a Lincoln County Berntsen monument - 36" - witnessed by  
a 1" iron pipe, N24°W, 24.9 feet  
an 18" White Birch S82°W, 53.7 feet  
a 13" Cherry S60°W, 45.8 feet and  
a 6" Norway Pine S32°E, 18.1 feet

Dated at Merrill, Wis., this 15th day of December, 19 75

Signature Sheridan D. Schwark Title Reg. Land Surveyor Registration No. S-1205  
(County Surveyor, Registered Land Surveyor, or other duly authorized official)

Office of Register of Deeds, County of \_\_\_\_\_, I hereby certify that the within instrument was filed in this office for record on the \_\_\_\_\_ day of \_\_\_\_\_, 19 \_\_\_\_\_ at \_\_\_\_\_ o'clock \_\_\_\_\_ M.

.....  
(Register of Deeds)

By \_\_\_\_\_ Deputy