

U.S. PUBLIC LAND SURVEY MONUMENT RECORD

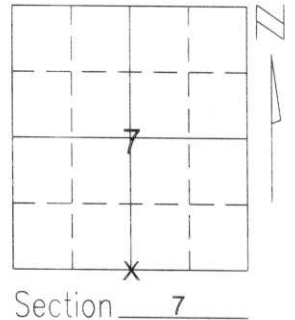
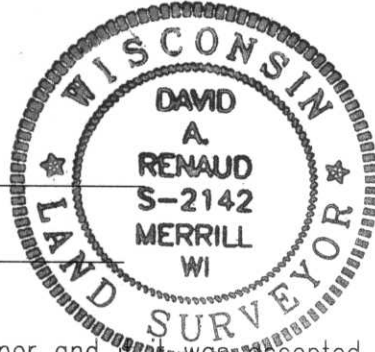
Note: This form is intended and designed to fulfill all requirements of Wisconsin Administrative Code, Chapter A-E 5.02, U.S. Public Land Survey Monument Record (3)(a)(b)(c)(d)(e)(f)(g)(h)(i). An additional sheet may be added if necessary to conform with said requirements.

(a) Corner location: Township 31 North

Range 7 East

Town/City/Village MERRILL

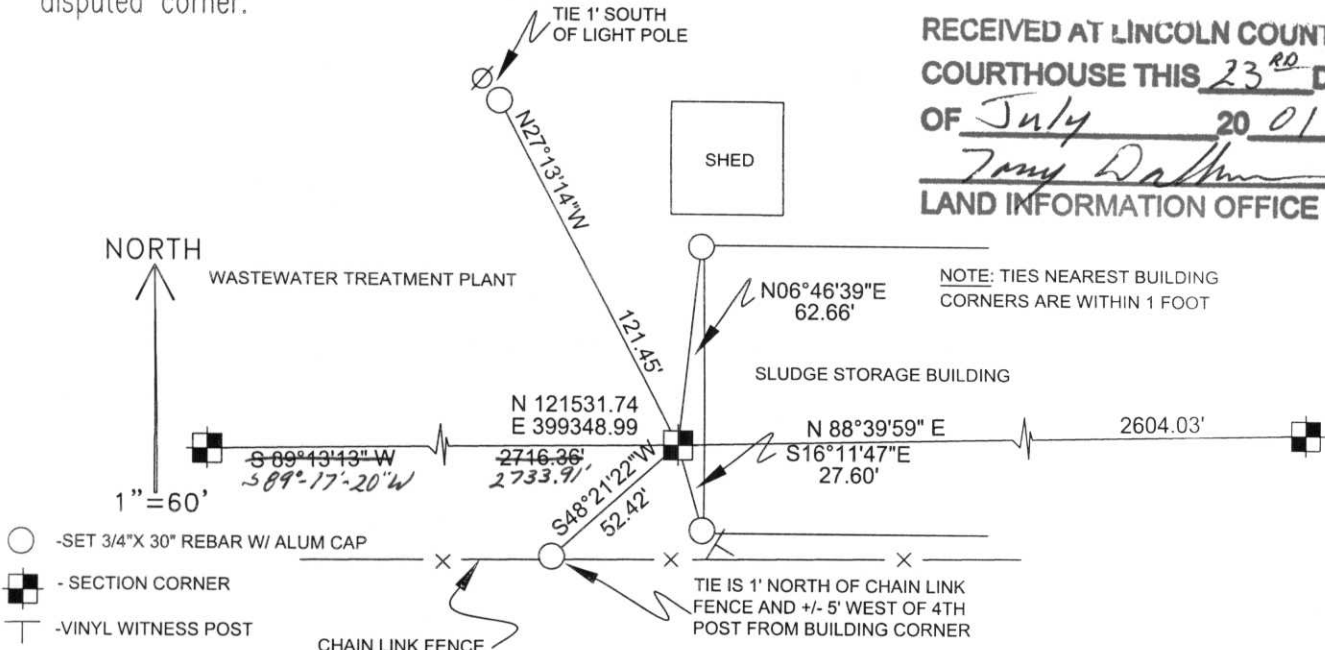
County LINCOLN



(b)(f)(g)(h) Description of monument found at this corner and if it was accepted, state all evidence (material, testimonial, occupational, plats, records, other monuments) used as a basis for accepting. If not accepted or if nothing was found, state evidence used as basis for establishing location. If reestablished through lost corner proportionate methods, indicate all monuments, distances and directions used to establish.

I MEASURED EXTENSIVELY THROUGHOUT SECTION 7. THE CORNERS ALONG THE NORTH LINE OF THIS SECTION ARE IN AND ARE ACCEPTED. THE MAIN EVIDENCE LEFT OF THE ORIGINAL LOCATION OF THIS CORNER ARE THE CENTERLINES OF STREETS THROUGHOUT THIS SECTION WHICH GENERALLY FALL ALONG 1/16TH LINES. I FOUND THAT THE LOCATION OF THESE CENTERLINES FIT VERY WELL TO EACH OTHER AS WELL AS THE ORIGINAL GOVERNMENT SURVEY OF SECTION 7. PREVIOUS SURVEYS (ON FILE AT THE LINCOLN COUNTY SURVEYOR'S OFFICE) IN THE SOUTHEAST 1/4 OF SECTION 7 INDICATE THAT THIS CORNER HAD BEEN IN AND MEASURED TO, HOWEVER, WE FOUND NO EVIDENCE OF THE CORNER'S LOCATION. CONSTRUCTION OF A WASTEWATER TREATMENT PLANT IS LIKELY THE REASON THAT NOTHING WAS FOUND. I COMPUTED THE CORNER'S LOCATION BASED ON THESE PREVIOUS SURVEYS AND FOUND THAT THIS LOCATION FELL WEST OF THE CENTERLINE OF JOHNSON STREET TO THE NORTH AS SHOWN OF PREVIOUS SURVEYS. THIS LOCATION ALSO FIT WITH A BEST FIT LINE THROUGH THE NORTH 1/4 CORNER OF SECTION 7 AND FOUND IRON STAKES ALONG THE NORTH & SOUTH 1/4 LINE OF SECTION 7. I ACCEPTED THE COMPUTED LOCATION BASED ON PREVIOUS SURVEYS AS THE BEST AVAILABLE EVIDENCE OF THE CORNER'S LOCATION.

(c)(d)(e) Plan view of corner with ties to at least 4 witness monuments. If in disagreement with previously established corner, show the distances between the two corners and also indicate the ties to the disputed corner.



RECEIVED AT LINCOLN COUNTY
COURTHOUSE THIS 23RD DAY
OF July 2001
Tony Dalton
LAND INFORMATION OFFICE

NOTE: TIES NEAREST BUILDING CORNERS ARE WITHIN 1 FOOT

NOTE:
-SET BERNSTEIN MONUMENT AT CORNER

COORDINATES AND BEARINGS ARE REFERENCED TO THE LINCOLN COUNTY COORDINATE SYSTEM AS DEVELOPED BY THE WISCONSIN DEPARTMENT OF TRANSPORTATION AND WERE DETERMINED BY GPS OBSERVATIONS ON CONTROL POINTS AS SUPPLIED BY THE WDOT.

(i) I, DAVID A. RENAUD

(type or print name) certify that the corner location on this record was determined by me or under my direction and control and that this U.S. Public Land Survey Monument Record is correct and complete to the best of my knowledge and belief.

David A. Renaud 6/25/01
Signature Date

Revised 12/13/01 ARD

Index No. I-3