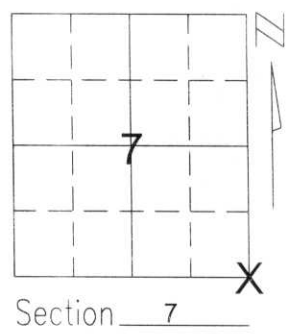


U.S. PUBLIC LAND SURVEY MONUMENT RECORD

Note: This form is intended and designed to fulfill all requirements of Wisconsin Administrative Code, Chapter A-E 5.02, U.S. Public Land Survey Monument Record (3)(a)(b)(c)(d)(e)(f)(g)(h)(i). An additional sheet may be added if necessary to conform with said requirements.

(a) Corner location: Township 31 North
Range 7 East
Town/City/Village MERRILL
County LINCOLN

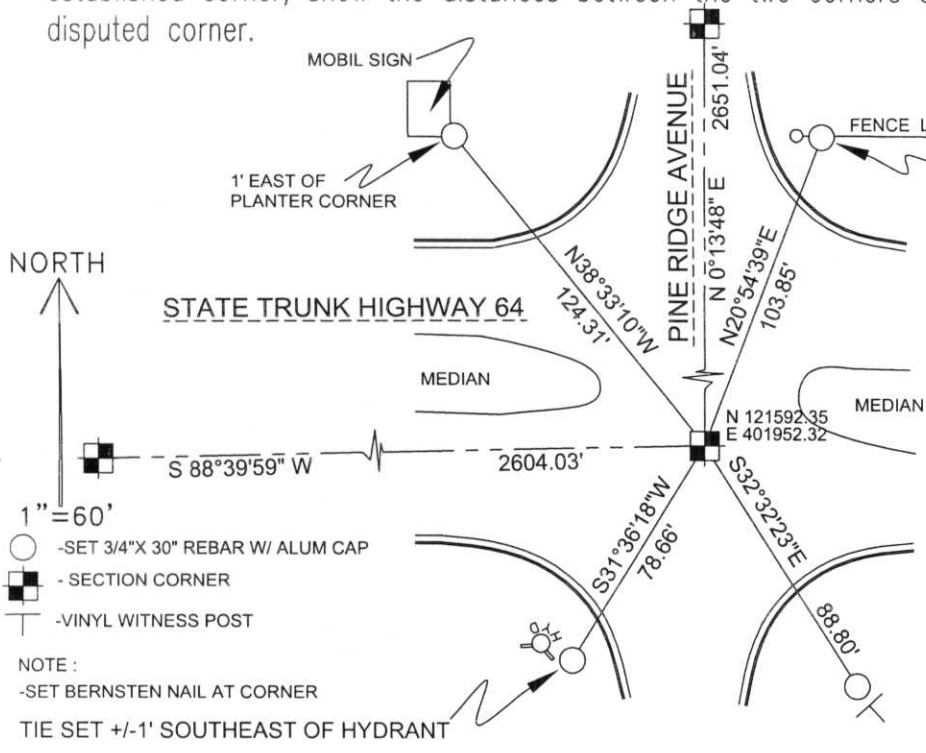


(b)(f)(g)(h) Description of monument found at this corner and if it was accepted, state all evidence (material, testimonial, occupational, plats, records, other monuments) used as a basis for accepting. If not accepted or if nothing was found, state evidence used as basis for establishing location. If reestablished through lost corner proportionate methods, indicate all monuments, distances and directions used to establish.

THIS CORNER HAD BEEN TIED OUT IN 1976 BY SHERIDAN SCHWARK. I FOUND A P.K. NAIL AT THE INTERSECTION OF STATE TRUNK HIGHWAY "64" AND PINE RIDGE AVENUE. I FOUND TWO REMAINING TIES TO THE CORNER AS SHOWN ON THE TIE SHEET AND VERIFIED THAT THE DISTANCES TO THE REMAINING TIES WAS CORRECT. I ACCEPTED THE P.K. NAIL AS LOCATION OF CORNER AND REPLACED WITH A BERNSTEN NAIL, AND RETIED CORNER AS SHOWN BELOW.

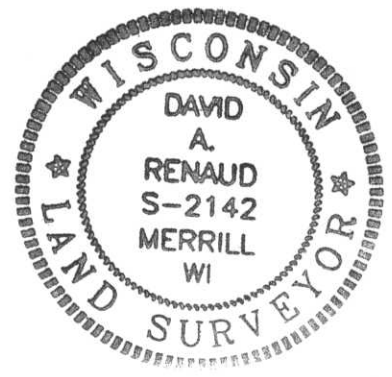
RECEIVED AT LINCOLN COUNTY
COURTHOUSE THIS 23RD DAY
OF July 20 01
Tony Dallen
LAND INFORMATION OFFICE

(c)(d)(e) Plan view of corner with ties to at least 4 witness monuments. If in disagreement with previously established corner, show the distances between the two corners and also indicate the ties to the disputed corner.



COORDINATES AND BEARINGS ARE REFERENCED TO THE LINCOLN COUNTY COORDINATE SYSTEM AS DEVELOPED BY THE WISCONSIN DEPARTMENT OF TRANSPORTATION AND WERE DETERMINED BY GPS OBSERVATIONS ON CONTROL POINTS AS SUPPLIED BY THE WDOT.

(i) I, DAVID A. RENAUD
(type or print name) certify that the corner location on this record was determined by me or under my direction and control and that this U.S. Public Land Survey Monument Record is correct and complete to the best of my knowledge and belief.



Index No. I-5

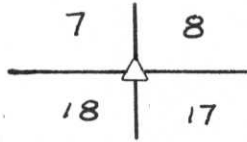
David A. Renaud 6/25/01
Signature Date

U. S. PUBLIC LAND SURVEY MONUMENT RECORD

INSTRUCTIONS: This record shall show the location of the corner and shall include all of the following nine elements (a through i).

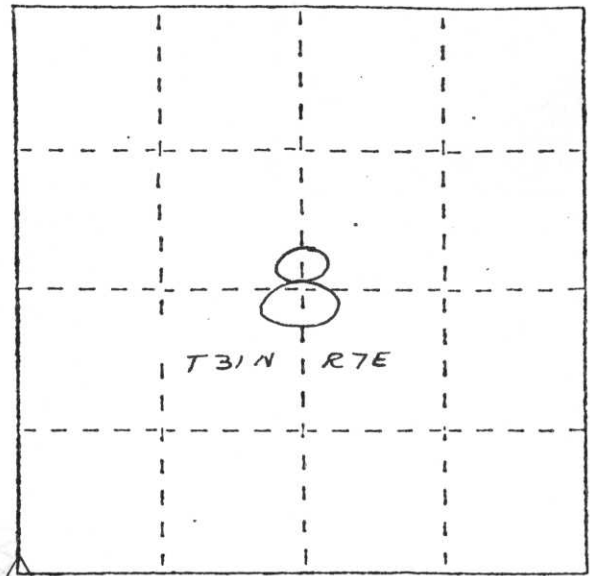
- (a) Identify the corner by reference to the U.S. public land survey system.

△ = Corner monument restored.



Southwest Corner of Section 8, T31N, R7E, Lincoln County, Wisconsin

Date of Survey: April 6, 1988

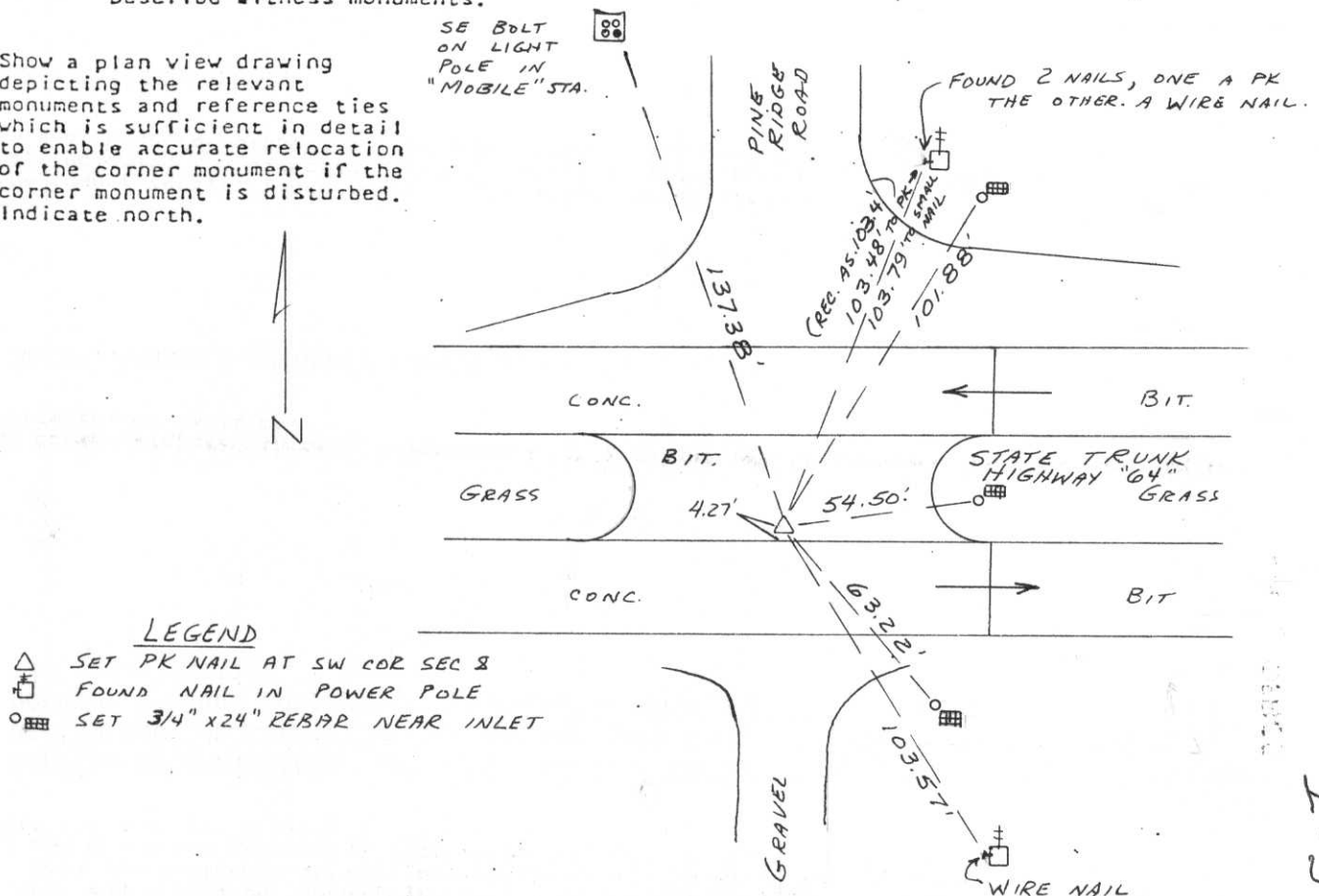


- (b) Describe any record evidence, monument evidence, occupational evidence, testimonial evidence or any other material evidence you considered, and whether the monument was found or placed.

I set a P.K. nail at the Southwest corner of Section 8, T31N, R7E using ties by T. Zimmerman and L. Rogers dated June 25, 1986. The monument was missing, probably due to road construction. Only one tie remained from the tie sheet by Sheridan D. Schwark dated June 10, 1976 and it measures within 0.08 feet.

- (c) In the plan view drawing below, provide reference ties to at least 4 witness monuments, or, if the location is within a municipality, to at least 2 witness monuments. (Witness monuments shall be made of concrete, natural stone, iron or other equally durable material.) Describe witness monuments.

- (d) Show a plan view drawing depicting the relevant monuments and reference ties which is sufficient in detail to enable accurate relocation of the corner monument if the corner monument is disturbed. Indicate north.



(c) Describe any material discrepancy between the location of the corner as restored or reestablished and the location of that corner as previously restored or reestablished by distance and direction. Show the discrepancy on the plan view drawing under (d), above. Show the distances between the corner as previously restored or reestablished and (1) the corner as restored or reestablished, and (2) to at least 2 of the witness monuments shown on the drawing in (d), above.

A point approximately 0.5' North and 1.5' West of this point may have been used as the Section corner for two surveys just North of this corner in Section 7, however I found no physical evidence of this point and none of the ties would fit this location.

(f) Was the corner restored through acceptance of (1) an obliterated evidence location, or, (2) a found/perpetuated location?

An obliterated evidence location.

(g&h) Was the corner reestablished through lost corner proportionate methods? If so, show the method, including the directions and distances to other public land survey corners used as evidence or used for proportioning in determining the corner location?

Not a lost corner.

RECEIVED AT LINCOLN COUNTY
COURTHOUSE THIS 20 DAY
OF May 1988
Pet. Pinner
TAX DESCRIPTION OFFICE

(1) I, Ross A. Michaels
(type or print name) certify that the corner location shown on this record was determined by me or under my direction and control and that this U.S. Public Land Survey Monument Record is correct and complete to the best of my knowledge and belief.

Michaels

1988



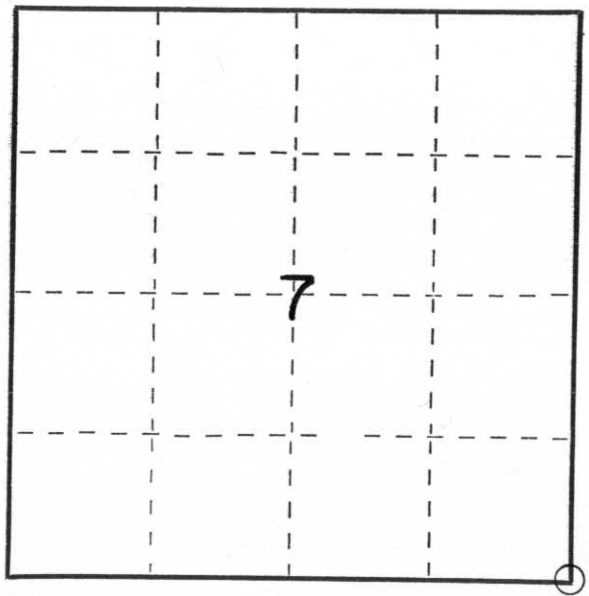
CERTIFIED LAND CORNER RESTORATION

Index No. I-5

State of Wisconsin }
County of Lincoln } ss.

I Sheridan D. Schwark, do hereby certify that on the _____ day of April, 1976, I found evidence of the South east corner of Section 7 Township 31, North, Range 7 East, Fourth, Principal Meridian, as described hereon; and that from this evidence I established a new monument and accessories as described hereon to perpetuate the original location of this corner.

Resident witnesses:



○ = Corner monument restored.

History of original corner establishment:

Original Surveyor: A. G. Ellis and L. G. Ellis
Date of original survey: March, 1852
Original Corner: Wood Post
Original bearing trees: Birch 8" is marked
Birch 12" N45°W. 19 lks.

Ties gone
Per Aero-metric
10/98

Description of corner evidence found:

There was no evidence of the original bearing trees. The highway department had located the corner in 1939 when State Trunk Highway "64" was being worked on. I relocated the position of the corner, using the highway notes.

Description of monument and accessories I established to perpetuate the original location of this corner.

Set a Lincoln County Berntsen monument - 36" - witnessed by

- a P.K. nail in Power Pole No. 3107-17 WI S3°W, 97.8 feet
- a P.K. nail in Power Pole No. 3107-8 LI N15°E, 103.4 feet
- a 5/8" solid iron rod at the Northwest corner of a 3' x 6' catch basin S38°E 64.7 feet
- a 5/8" solid iron rod \pm 3 ft. south of a stop sign N14°W, 84.2 feet

Dated at Merrill, Wis., this 10 TH day of JUNE, 1976

Signature Sheridan D. Schwark Title Registered Land Surveyor Registration No. S-1205
(County Surveyor, Registered Land Surveyor, or other duly authorized official)

Office of Register of Deeds, County of Lincoln, I hereby certify that the within instrument was filed in this office for record on the _____ day of _____, 19____ at _____ o'clock _____ M.

(Register of Deeds)

By _____ Deputy