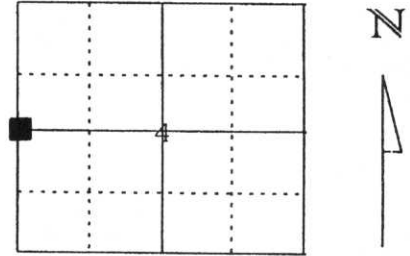


# U.S. PUBLIC LAND SURVEY MONUMENT RECORD

Note: This form is intended and designed to fulfill all requirements of Wisconsin Administrative Code, Chapter A-E 5.02, U.S. Public Land Survey Monument Record (3) (a) (b) (c) (d) (e) (f) (g) (h) (i). An additional sheet may be added if necessary to conform with said requirements.

(a) Corner location: Township 31 North  
 Range 7 East  
 Town/City/Village TOWN OF PINE RIVER  
 County Lincoln

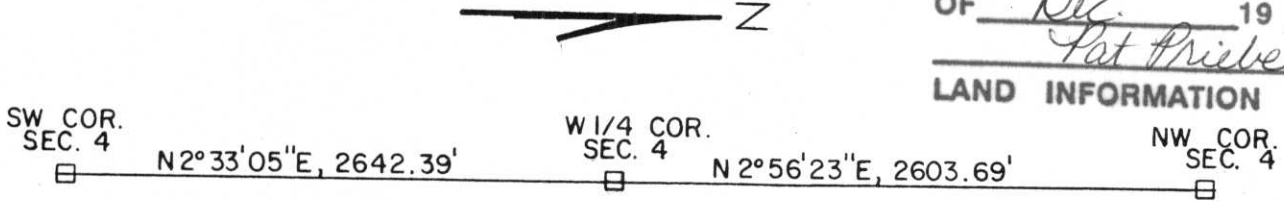


Section 4

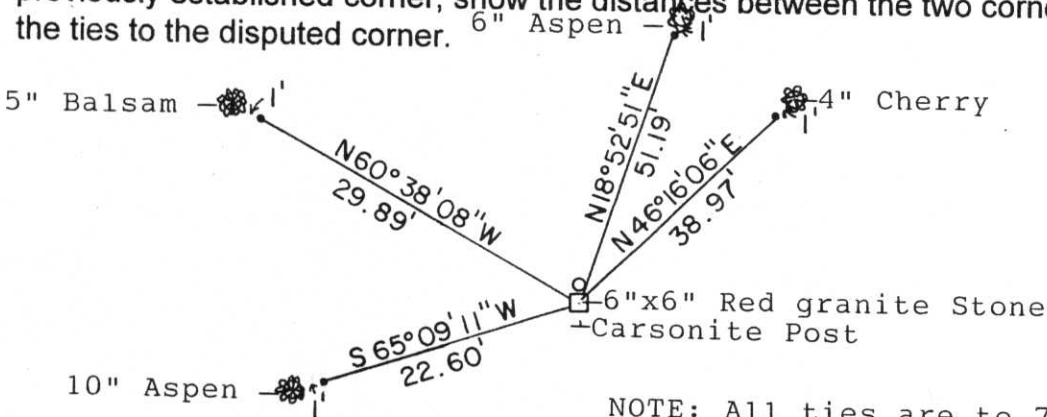
(b) (f) (g) (h) Description of monument found at this corner and if it was accepted, state all evidence (material, testimonial, occupational, plats, records, other monuments) used as a basis for accepting. If not accepted or if nothing was found, state evidence used as basis for establishing location. If reestablished through lost corner proportionate methods, indicate all monuments, distances and directions used to establish.

We searched the intersection of an old fence line to the North and West and found a 6"x6"x40" Red Granite Stone lying on its side. We stood it up to its original position and placed a 1 1/2" iron pipe to the North side of the stone. Accepted the position of the stone. Tied to 7/8" rebar with Lincoln County caps.

RECEIVED AT LINCOLN COUNTY  
 COURTHOUSE THIS 22nd DAY  
 OF Dec. 19 98  
*Pat Priebe*  
 LAND INFORMATION OFFICE



(c) (d) (e) Plan view of corner with ties to at least 4 witness monuments. If in disagreement with previously established corner, show the distances between the two corners and also indicate the ties to the disputed corner.



NOTE: All ties are to 7/8" rebar with Lincoln County caps.

(I) I, William W. Nutter, R.L.S. S-2299  
 (type or print name) certify that the corner location on this record was determined by me or under my direction and control and that this U.S. Public Land Survey Monument Record is correct and complete to the best of my knowledge and belief.

*William W. Nutter* 12-21-98  
 Signature Date

Index No. C-9