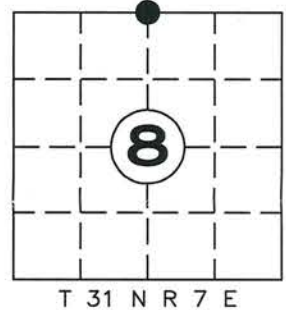


# U.S. PUBLIC LAND SURVEY MONUMENT RECORD

NOTE: THIS FORM IS INTENDED AND DESIGNED TO FULFILL ALL REQUIREMENTS OF WISCONSIN ADMINISTRATIVE CODE CHAPTER A-E 7.08 U.S. PUBLIC LAND SURVEY MONUMENT RECORD (3) (a)(b)(c)(d)(e)(f)(g)(h)(i). AN ADDITIONAL SHEET MAY BE ADDED IF NECESSARY TO CONFIRM WITH SAID REQUIREMENTS.

(a) TYPE OF MONUMENT: BERNTSEN SURVEY NAIL  
 N¼ CORNER SECTION 8 TOWNSHIP 31 NORTH, RANGE 7 EAST  
 TOWN OF: PINE RIVER, LINCOLN COUNTY  
 LINCOLN COUNTY COORDINATES:  
 NORTHING: 126866.823  
 EASTING: 404668.902



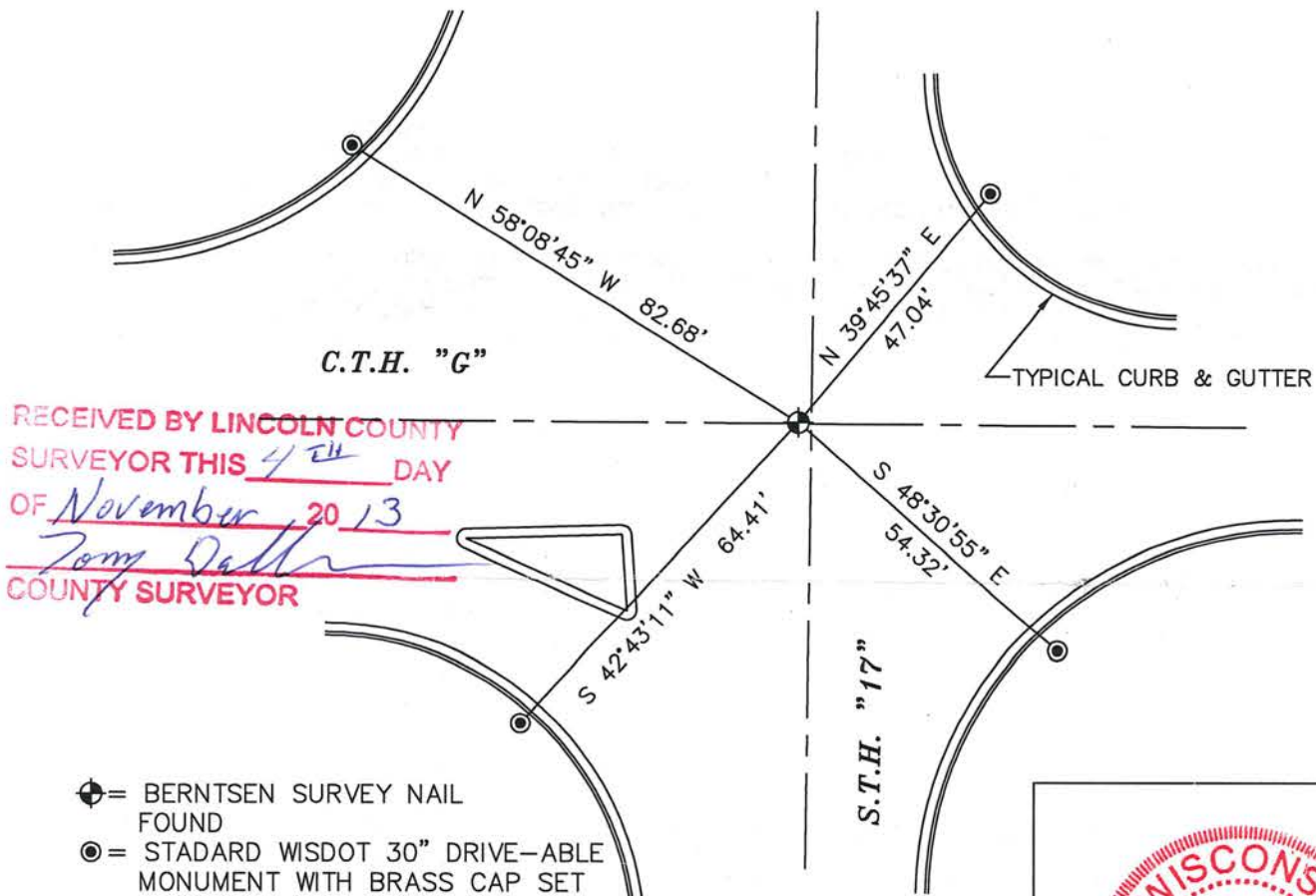
(b) HISTORY OF ORIGINAL CORNER:  
 ORIGINAL SURVEYOR: A.G. ELLIS, F.S. ELLIS, FEB. 1852 – MAR. 1852  
 SET POST, HEMLOCK 14 N27E 9, DO 14 S1E 47

(f)(g)(h) DESCRIPTION OF MONUMENT FOUND AT THIS CORNER AND IF IT WAS ACCEPTED STATE ALL EVIDENCE (MATERIAL, TESTIMONIAL, OCCUPATIONAL, PLATS, RECORDS, OTHER MONUMENTS) USED AS A BASIS FOR ESTABLISHING LOCATION. IF REESTABLISHED THROUGH LOST CORNER PROPORTIONATE METHODS, INDICATE ALL MONUMENTS, DISTANCES, AND DIRECTIONS USED TO ESTABLISH. INDICATE TYPE OF MONUMENT AND SIGN POST FOUND OR SET.

9 JUNE 1970: SURVEY NOTES ON FILE CALL FOR A R.R. SPIKE 6" WEST OF PAINT STRIPE  
 6 OCT 1976: D. TLUSTY CALLS FOR P.K. NAIL FOUND  
 4-11-77: WISDOT SURVEY NOTES CALL FOR R.R. SPIKE IN PAVEMENT  
 10-26-06 RLS 2357: RECONSTRUCTION OF STH "17" DESTROYED THE EXISTING CORNER AND TIES. I RESTORED THE NORTH ¼ CORNER OS SECTION 8 BY USING COORDINATES ESTABLISHED PRIOR TO HIGHWAY CONSTRUCTION AND SET NEW TIES. N: 126866.82 E: 404668.95

14 OCT. 2013: PRIOR TO STH "17" & C.T.H. "G" ROAD CONSTRUCTION PROJECT FOUND AND VERIFIED BERNTSEN SURVEY NAIL AT CORNER LOCATION. AFTER COMPLETION OF ROAD CONSTRUCTION VERIFIED BERNTSEN SURVEY NAIL AND SET FOUR NEW WITNESS MONUMENTS

(c)(d)(e) PLAN VIEW OF CORNER WITH TIES TO AT LEAST FOUR WITNESSES. IF IN DISAGREEMENT WITH PREVIOUSLY ESTABLISHED CORNER, SHOW THE DISTANCE BETWEEN THE TWO CORNERS AND ALSO INDICATED THE TIE TO THE DISPUTED CORNER.



RECEIVED BY LINCOLN COUNTY  
 SURVEYOR THIS 4<sup>TH</sup> DAY  
 OF November 20 13  
Darren Krzanowski  
 COUNTY SURVEYOR

INDEX NO. T31N R7E E-7

I DARREN B. KRZANOWSKI, REGISTERED LAND SURVEYOR NO. 2663, HEREBY CERTIFY THAT THE CORNER LOCATION ON THIS RECORD WAS REFERENCED BY ME OR UNDER MY DIRECTION AND CONTROL AND THAT THIS U.S. PUBLIC LAND SURVEY MONUMENT RECORD IS COMPLETE TO THE BEST OF MY KNOWLEDGE AND BELIEF.

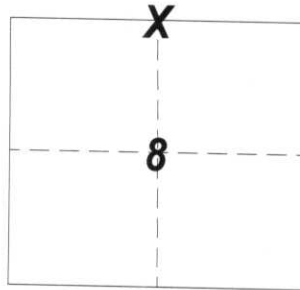
Darren Krzanowski  
 DARREN B. KRZANOWSKI RLS 2663  
 DATED THIS 1ST DAY OF NOVEMBER 2013



LINCOLN COUNTY  
GOVERNMENT LAND CORNER CERTIFICATE

TYPE OF MONUMENT: BERNTSEN SURVEY MARKER NAIL

L.C.C.S COORDINATES  
N: 126866.82  
E: 404668.95



CORNER NO. \_\_\_\_\_

SECTION 8  
TOWN 31 NORTH  
RANGE 7 EAST

DRAWN BY: KELLY D. CALLAWAY

BASIS FOR CORNER LOCATION

Reconstruction of STH "17" destroyed the existing corner and ties. I restored the North 1/4 corner of Section 8 by using Coordinates established prior to highway construction and set new ties. (See Sketch)

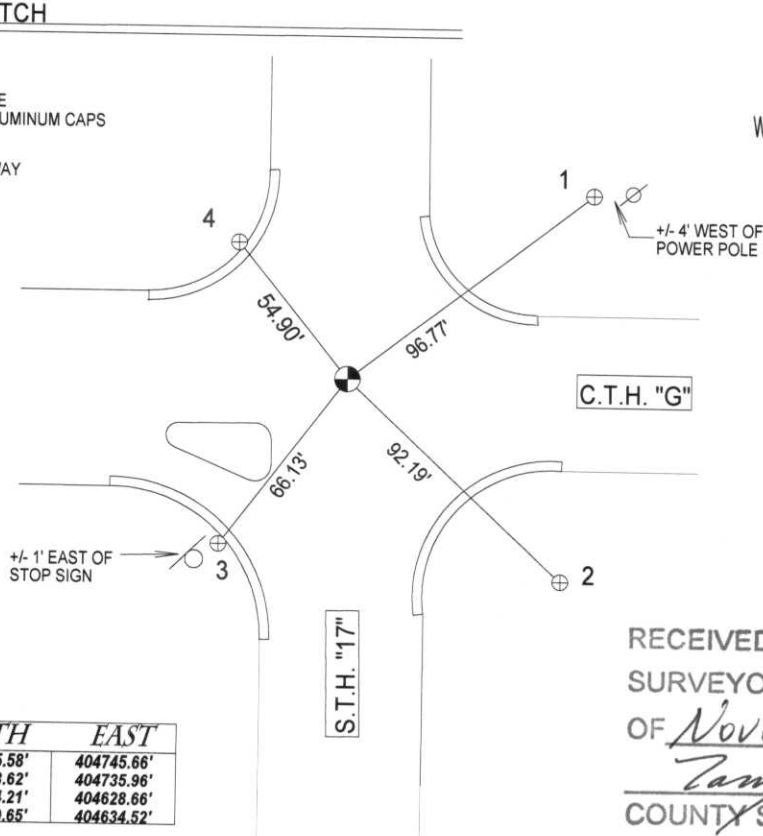


LOCATION & TIE SKETCH

ALL REFERENCE MONUMENTS ARE  
REBAR WITH LINCOLN COUNTY ALUMINUM CAPS

CREW MEMBERS: KELLY CALLAWAY  
MARK HINTZ

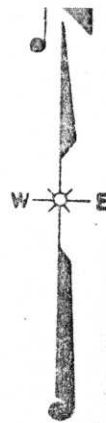
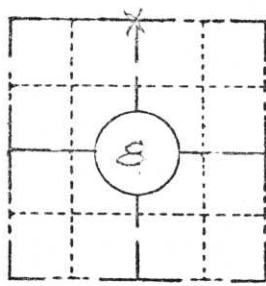
DATE: 10/23/06



NUMBER	NORTH	EAST
1	126925.58'	404745.66'
2	126803.62'	404735.96'
3	126814.21'	404628.66'
4	126909.65'	404634.52'

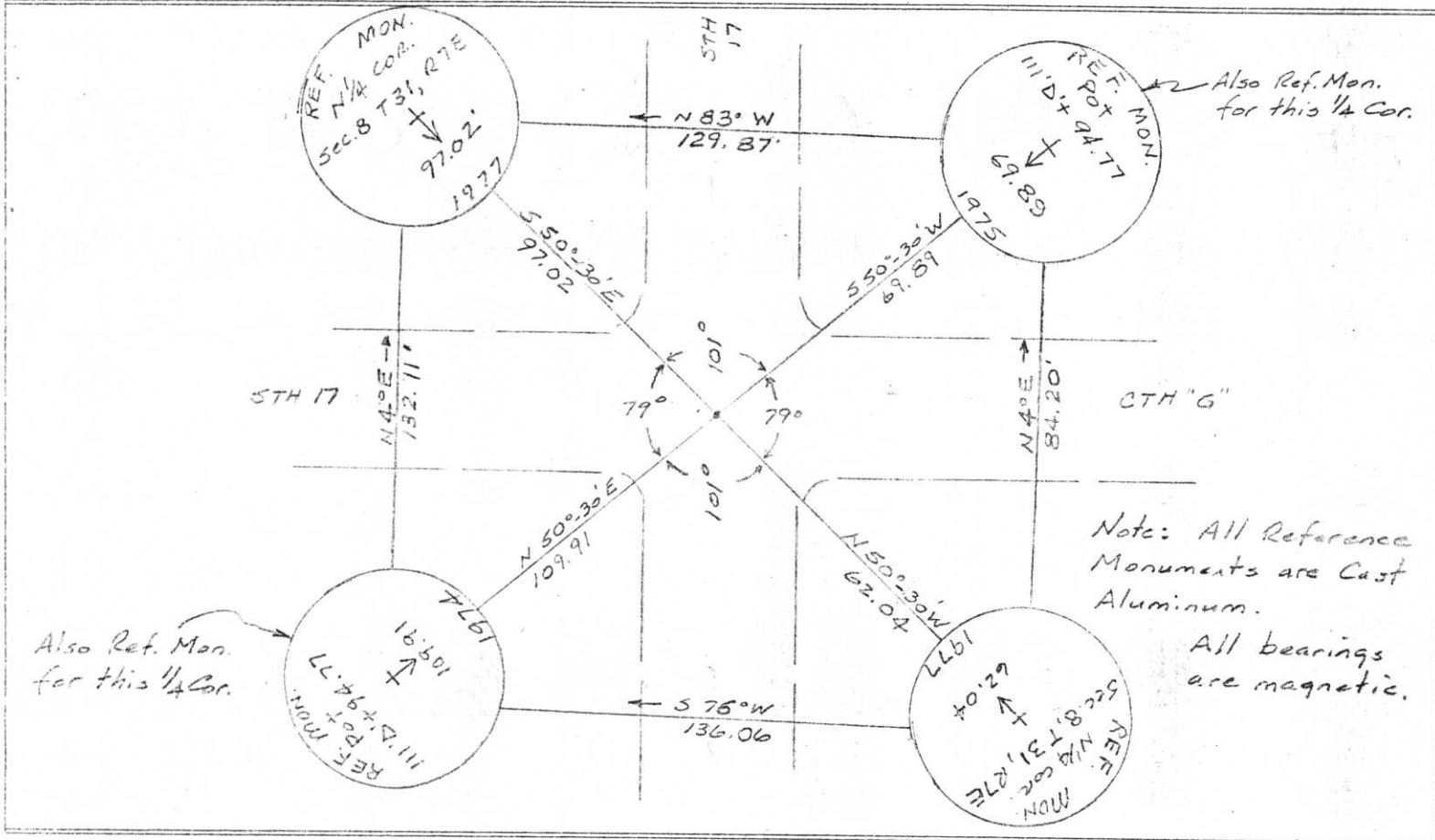
RECEIVED BY LINCOLN COUNTY  
SURVEYOR THIS 15<sup>TH</sup> DAY  
OF November 20, 06  
*Tony Dath*  
COUNTY SURVEYOR

COUNTY <i>Lincoln</i>		
TOWN <i>Pine River</i>		
HIGHWAY <i>STH 17</i>		
SECTION <i>8</i>	TOWNSHIP <i>31 N</i>	RANGE <i>R 7 E</i>
TYPE OF LANDMARK <i>R.R. spike in Pavement</i>		



LOCATION SKETCH  
(Location of landmark indicated by "x")

This space for copy of field notes or ties to the above described landmarks

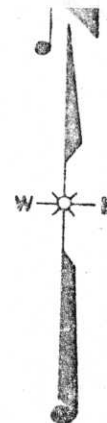
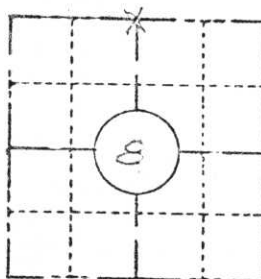


FILED UNDER PROJECT NUMBER <i>1173-2-00</i>		
SHC DISTRICT OFFICE NUMBER <i>7</i>		
CITY <i>Rhineland</i>	COUNTY <i>Oneida</i>	
LOCATED AND ESTABLISHED BY NAME <i>Jack R. Wallis</i>		
TITLE <i>Survey Crew Chief</i> DATE <i>4-11-77</i>		

COUNTY CLERK'S OFFICE	
COUNTY OF	WISCONSIN } 55
DATE RECEIVED FOR RECORD	DATE COPY SENT TO COUNTY SURVEYOR
SIGNATURE OF COUNTY CLERK	

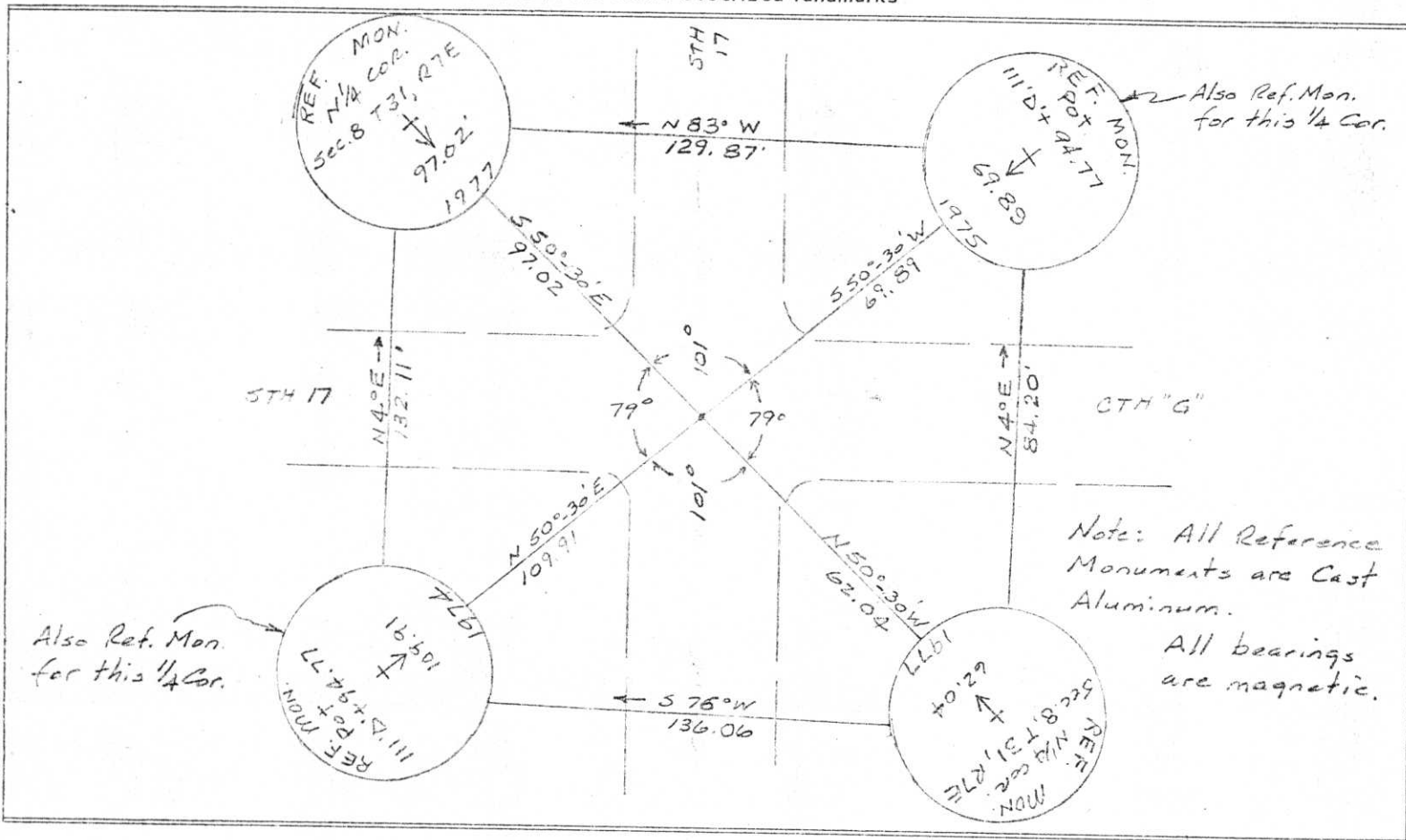
Notes: This work done under the supervision of William H. Scherer, Survey Supervisor, R.L.S. 5-866  
**PRESERVATION OF LANDMARKS**  
*William H. Scherer*

COUNTY <i>Lincoln</i>		
TOWN <i>Pine River</i>		
HIGHWAY <i>STH 17</i>		
SECTION <i>8</i>	TOWNSHIP <i>31 N</i>	RANGE <i>R 7E</i>
TYPE OF LANDMARK <i>R.R. Spike in Pavement</i>		



LOCATION SKETCH  
(Location of landmark indicated by "x")

This space for copy of field notes or ties to the above described landmarks



FILED UNDER PROJECT NUMBER <i>1173-2-00</i>		
SHC DISTRICT OFFICE NUMBER <i>7</i>		
CITY <i>Rhineland</i>	COUNTY <i>Oneida</i>	
LOCATED OR ESTABLISHED BY and referenced by: NAME <i>Jack P. Williams</i> TITLE <i>Survey Crew Chief</i> DATE <i>4-11-77</i>		

COUNTY CLERK'S OFFICE	
COUNTY OF	WISCONSIN } SS
DATE RECEIVED FOR RECORD	DATE COPY SENT TO COUNTY SURVEYOR
SIGNATURE OF COUNTY CLERK	

Note: This work done under the supervision of William H. Scherer, Survey Supervisor, R.L.S. S-566  
 William H. Scherer

E-7

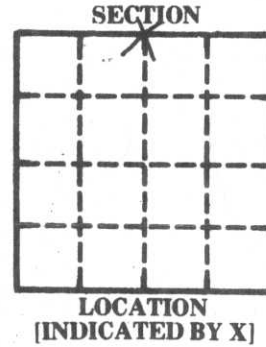
# SURVEY MONUMENT LOCATION RECORD

LANDMARK     BENCHMARK

FOUND   
 SET   
 RE-SET   
 RE-TIED

SECTION 8  
 TOWNSHIP 31 N  
 RANGE 7 E  
 [CITY, VILLAGE, COUNTY] LINCOLN

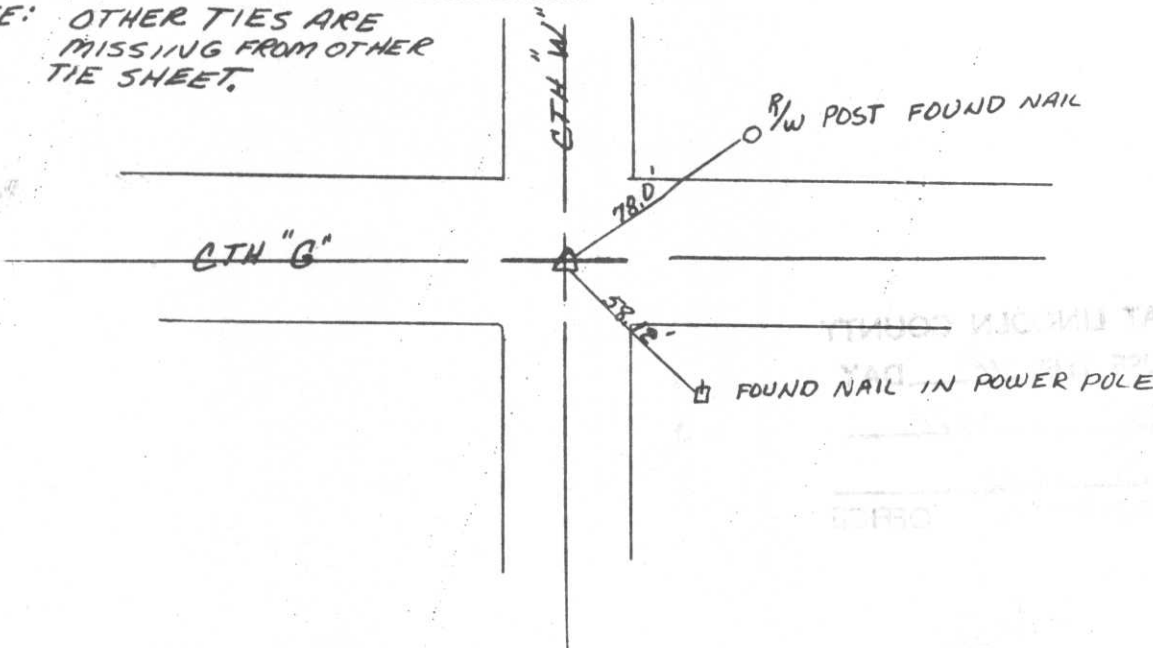
CORNER IDENTITY PK NAIL FOUND  
 DATE OF SURVEY OCT 6 1976  
 WEATHER CLOUDY + BREEZY  
 TEMPERATURE ±50°  
 SURVEY PARTY D. TLUSTY M. HENRICH S



**BASIS FOR MONUMENT LOCATION**  
 DESCRIBE METHOD OF SURVEY AND CORNER AUTHENTICATION

**TIE SKETCH**    SHOW HORIZONTAL TIE DISTANCES TO FIXED WITNESS MONUMENTS. DESCRIBE ALL MONUMENTS FOUND OR SET.

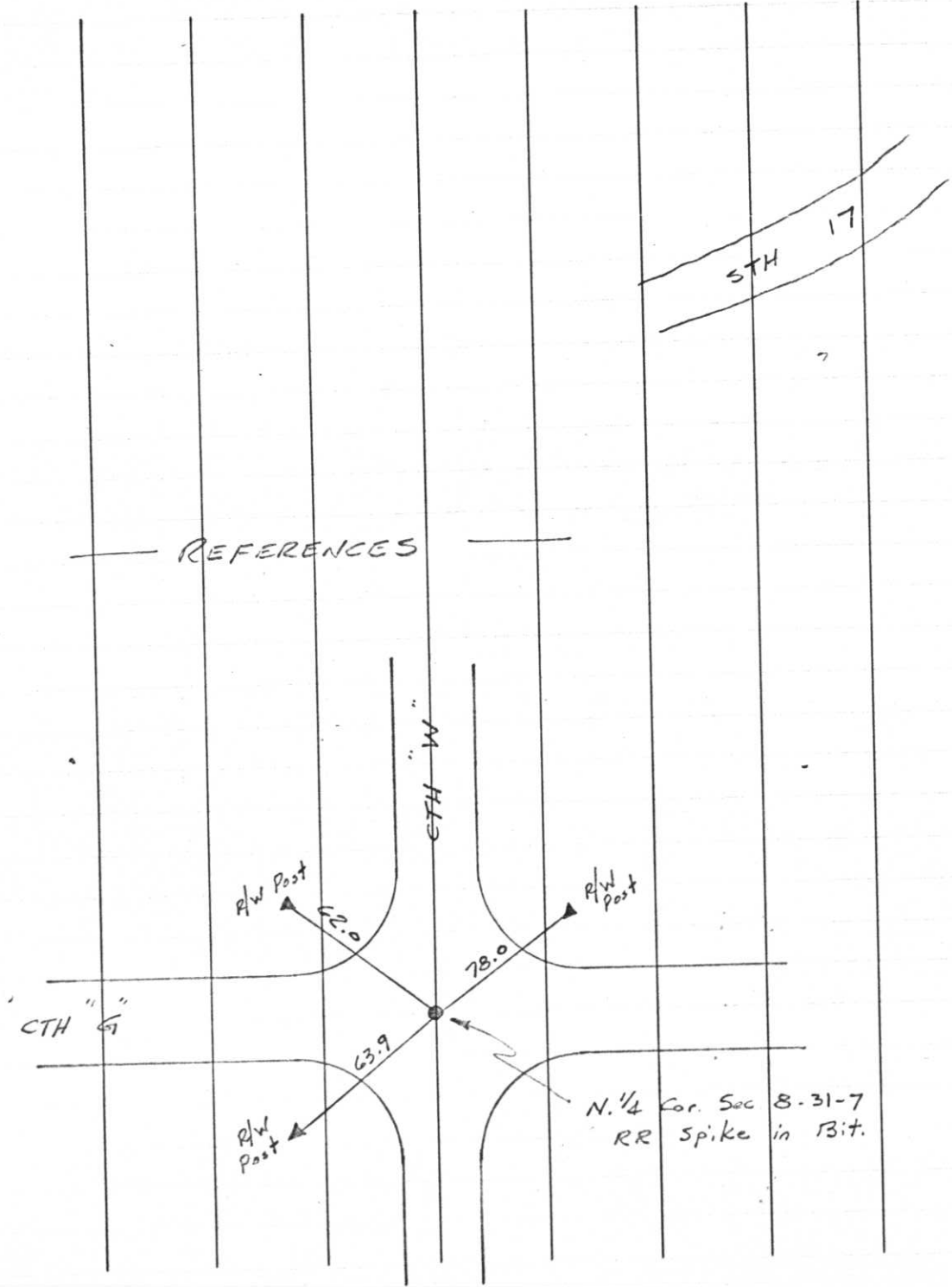
NOTE: OTHER TIES ARE MISSING FROM OTHER TIE SHEET.



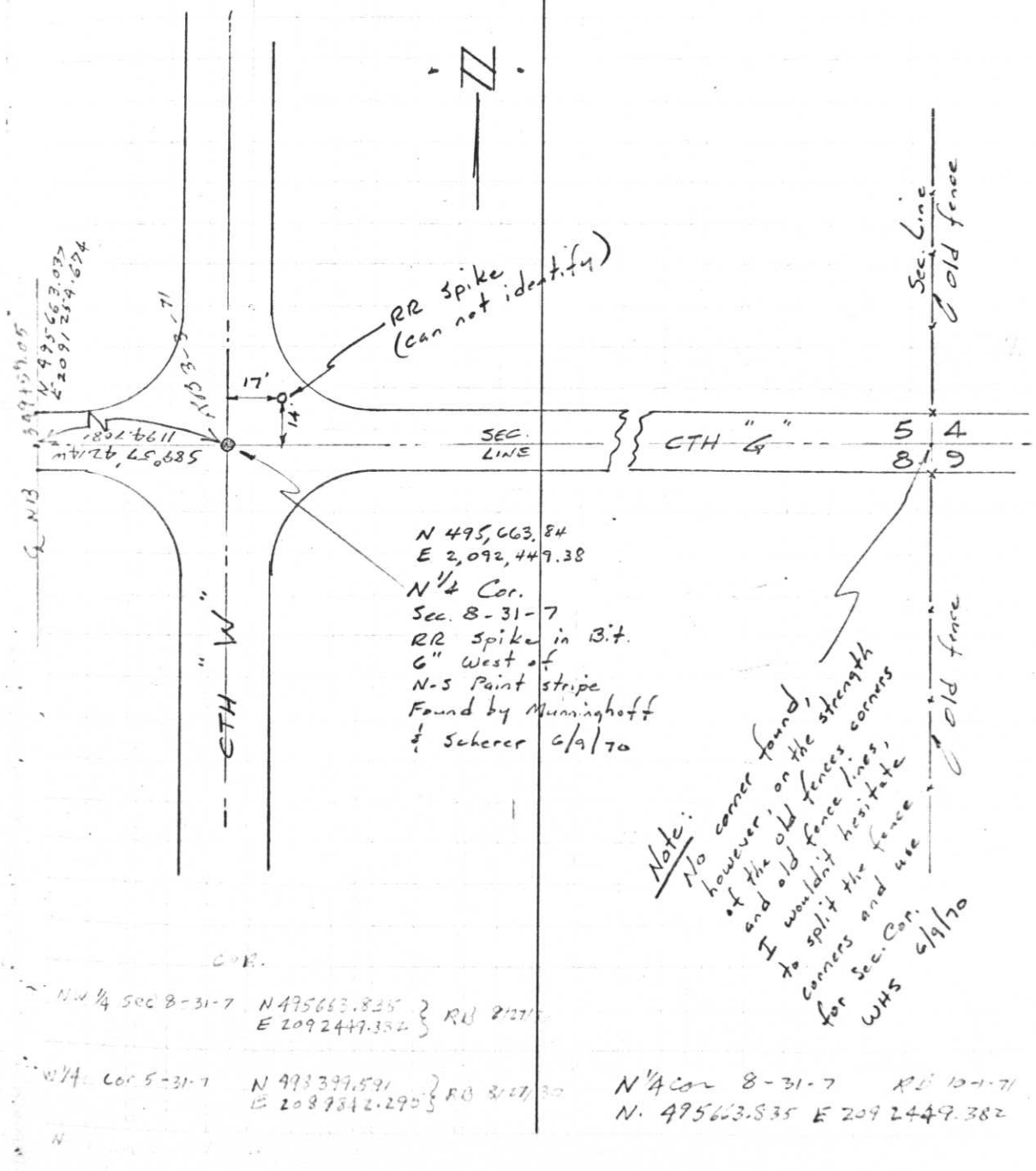
RECEIVED AT LINCOLN COUNTY COURT HOUSE  
 OF \_\_\_\_\_  
 TAX \_\_\_\_\_

T 31 N, R 7 E

June 9, 1970



REFERENCES



N 495,663.84  
E 2,092,449.38  
N 1/4 Cor.  
Sec. 8-31-7  
RR spike in B.t.  
6" West of  
N-S Paint stripe  
Found by Munninghoff  
& Scherer 6/9/70

Note:  
No corner found,  
however, on the strength  
of the old fences corners  
and old fence lines,  
I would hesitate  
to split the fence  
for Sec. Cor.  
WHS 6/9/70

N 1/4 Sec 8-31-7 }  
N 495663.825 } RD 2127  
E 2092449.354 }  
N 1/4 Cor 8-31-7 }  
N 493399.591 } RD 2127, 30  
E 2087812.295 }

N 1/4 Cor 8-31-7 RD 10-1-71  
N. 495663.835 E 2092449.382





18 11:15 AM





18 11:17 AM



18 11:18 AM



18 11:15 AM