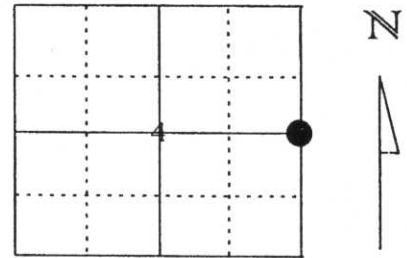


U.S. PUBLIC LAND SURVEY MONUMENT RECORD

Note: This form is intended and designed to fulfill all requirements of Wisconsin Administrative Code, Chapter A-E 5.02, U.S. Public Land Survey Monument Record (3) (a) (b) (c) (d) (e) (f) (g) (h) (l). An additional sheet may be added if necessary to conform with said requirements.

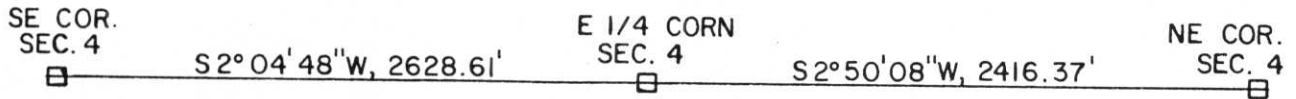
(a) Corner location: Township 31 North
 Range 7 East
 Town/City/Village Pine River
 County Lincoln



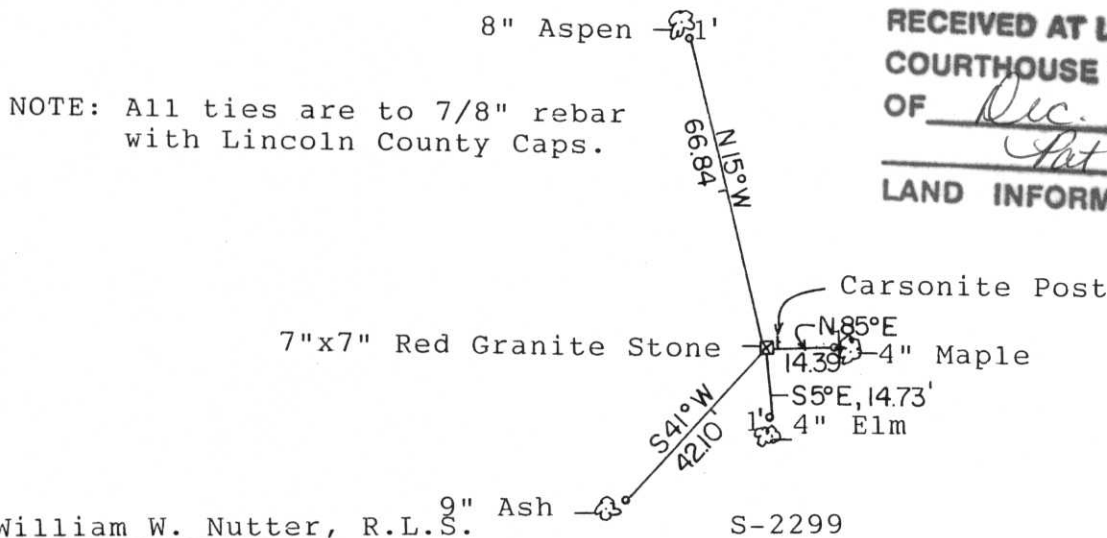
Section 4

(b) (f) (g) (h) Description of monument found at this corner and if it was accepted, state all evidence (material, testimonial, occupational, plats, records, other monuments) used as a basis for accepting. If not accepted or if nothing was found, state evidence used as basis for establishing location. If reestablished through lost corner proportionate methods, indicate all monuments, distances and directions used to establish.

Found a Red Granite Stone in a rock mound at the intersection of a North-South fence and a ditch to the West and old rock fence to the East. We accepted this position. Tied to 7/8" rebar with Lincoln County Caps.



(c) (d) (e) Plan view of corner with ties to at least 4 witness monuments. If in disagreement with previously established corner, show the distances between the two corners and also indicate the ties to the disputed corner.



**RECEIVED AT LINCOLN COUNTY
 COURTHOUSE THIS 22nd DAY
 OF Dec 19 98
Pat Piche
LAND INFORMATION OFFICE**

(l) I, William W. Nutter, R.L.S. S-2299
 (type or print name) certify that the corner location on this record was determined by me or under my direction and control and that this U.S. Public Land Survey Monument Record is correct and complete to the best of my knowledge and belief.
William W. Nutter 12-21-98
 Signature Date

Index No. 4-13