

U.S. PUBLIC LAND SURVEY MONUMENT RECORD

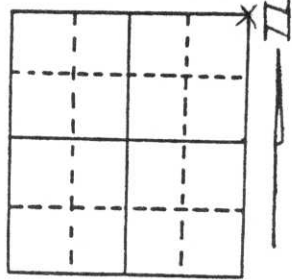
Note: This form is intended and designed to fulfill all requirements of Wisconsin Administrative Code, Chapter A-E 5.02, U.S. Public Land Survey Monument Record (3) (a) (b) (c) (d) (e) (f) (g) (h) (i). An additional sheet may be added if necessary to conform with said requirements.

(a) Corner location: Township 31 North

Range 7 East

Town/City/Village PINE RIVER

County LINCOLN



Section 11

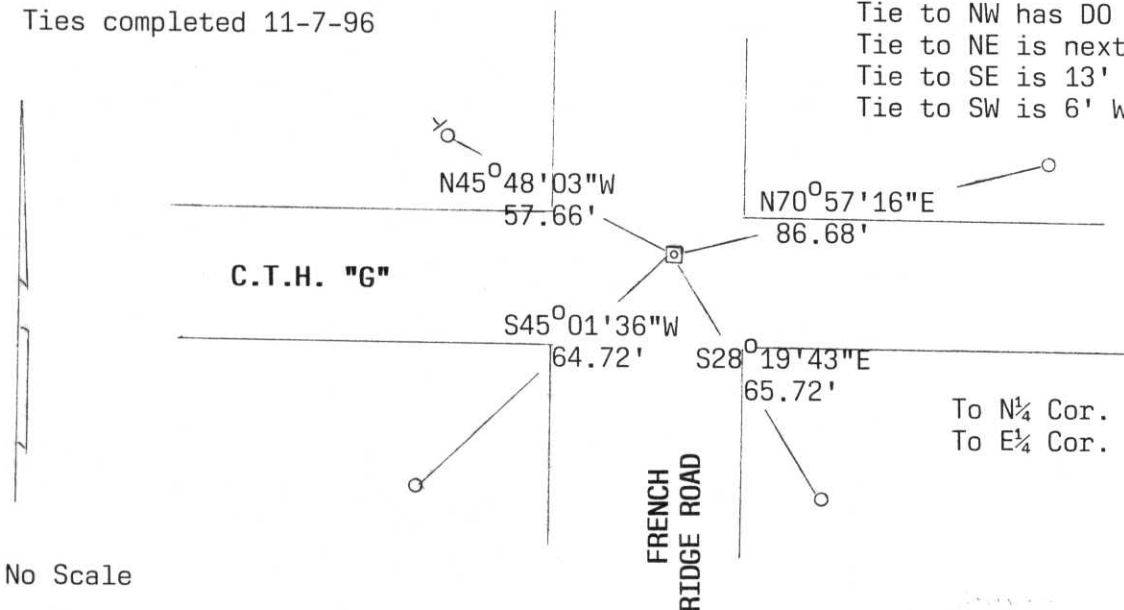
(b) (f) (g) (h) Description of monument found at this corner and if it was accepted, state all evidence (material, testimonial, occupational, plats, records, other monuments) used as a basis for accepting. If not accepted or if nothing was found, state evidence used as basis for establishing location. If reestablished through lost corner proportionate methods, indicate all monuments, distances and directions used to establish.

Dug with backhoe on 10-30-96 and found 6" x 6" Granite Stone Monument 4.5 feet below the road surface. Corner is 5 feet North of centerline of Hwy "G" and 5 feet East of centerline of Town Road to the South. Placed Iron Bar over stone and tied out.

**RECEIVED AT LINCOLN COUNTY
COURTHOUSE THIS 26th DAY
OF Dec. 19 96
Pat Priebe
TAX DESCRIPTION OFFICE**

(c) (d) (e) Plan view of corner with ties to at least 4 witness monuments. If in disagreement with previously established corner, show the distances between the two corners and also indicate the ties to the disputed corner.

Ties completed 11-7-96



All ties 7/8" x 30" Iron Bars
Tie to NW has DO NOT DISTURB SIGN
Tie to NE is next to Fire No. Sign
Tie to SE is 13' South of PP
Tie to SW is 6' West of Tel. Box

To N $\frac{1}{4}$ Cor. S89°59'12"W, 2641.62'
To E $\frac{1}{4}$ Cor. S0°03'07"E, 2650.28'

No Scale

(i) I, Gary R. Krueger RLS NO.1619
(type or print name) certify that the corner location on this record was determined by me or under my direction and control and that this U.S. Public Land Survey Monument Record is correct and complete to the best of my knowledge and belief.

Gary R. Krueger
Signature

12-19-96
Date



Index No. E-21