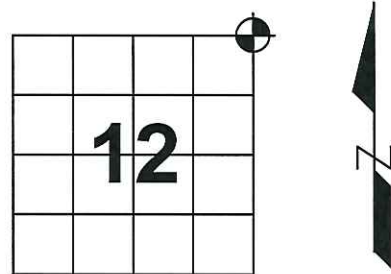


U.S. PUBLIC LAND SURVEY MONUMENT RECORD

Note: This form is intended and designed to fulfill all requirements of Wisconsin Administrative Code, Chapter A-E 7.08, U.S. Public Land Survey Monument Record (3) (a) (b) (c) (d) (e) (f) (g) (h) (i). An additional sheet may be added if necessary to conform with said requirements.

(a) Corner location: Township 31 North
 Range 7 East
 Town/~~City/ Village~~ Pine River
 County Lincoln



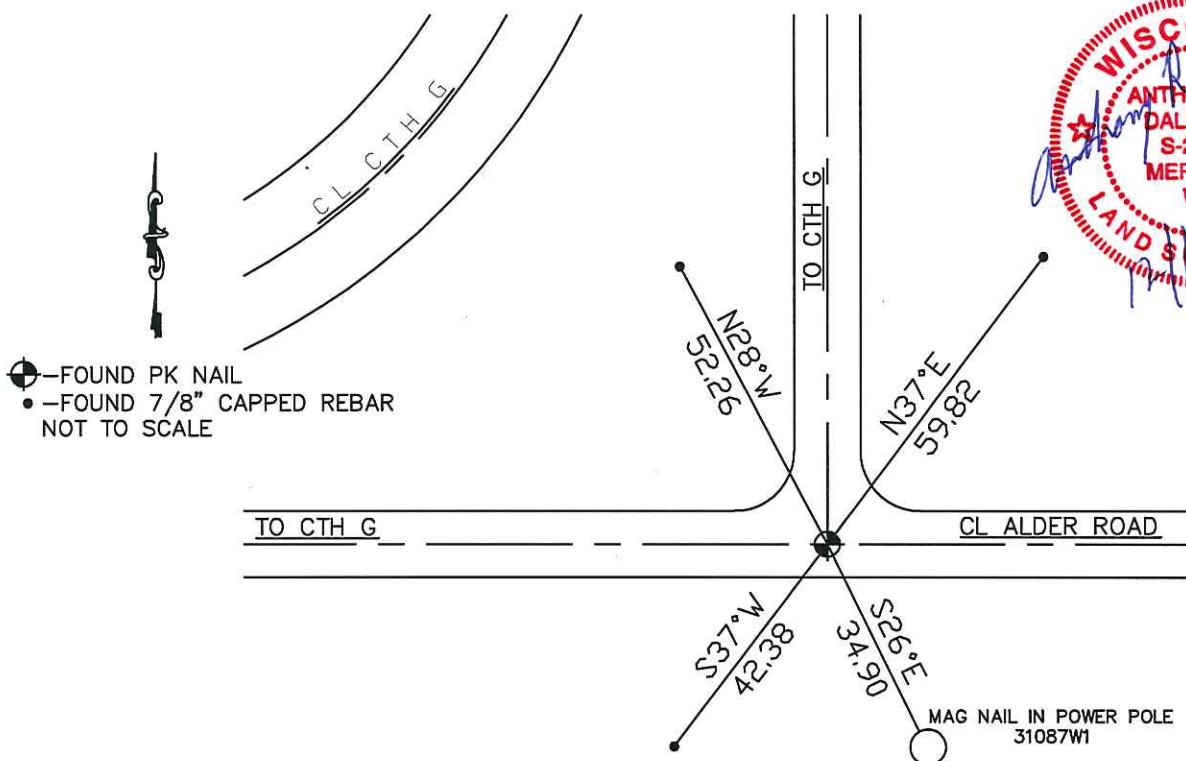
(b) (f) (g) (h) Description of monument found at this corner and if it was accepted, state all evidence (material, testimonial, occupational, plats, records, other monuments) used as basis for accepting. If not accepted or if nothing was found, state evidence used as basis for establishing location. If reestablished through lost corner proportionate methods, indicate all monuments, distances and directions used to establish.

July 1851 – Marsh, James M. Set post for corner to Sections 1,6,7,12.
 Birch 8 S04°E 37 Lks
 Hemlock 14 S47°W 26 Lks
 Hemlock 18 N81°W 17 Lks
 Hemlock 20 N12°E 7 Lks

Aug. 1995 – Krueger Gary R. Dug with backhoe and found the Granite Stone Monument about 9” below the road surface. Stone was scribed on top showing all four Sections it represented. Placed 7/8”x24” iron rebar on Northeast side of stone.

April 2012 – Dallman, Anthony R. Found P.K. Nail in CL intersection of Alder Road and CTH G, fit Krueger’s ties. Southeast tie was missing. Set new Southeast tie and held Krueger’s existing ties as shown below:

(c) (d) (e) Plan view of corner with ties to at least 4 witness monuments. If in disagreement with previously established corner, show the distance between the two corners and also indicate the ties to the disputed corner.



(i) I, Anthony R. Dallman
 (type or print name) certify that the corner location on this record was determined by me or under my direction and control and that this U.S. Public Land Survey Monument Record is correct and complete to the best of my knowledge and belief.

Anthony R. Dallman
 Signature Date 12/18/12

Index No. **E-25**









