

LINCOLN COUNTY U.S. PUBLIC LAND TIE SHEET RECORD

SECTION 36
TOWNSHIP 31N
RANGE 6 E

363164
NO.

LANDMARK

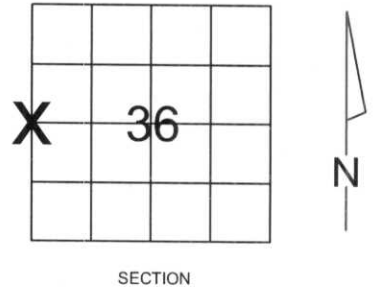
SCOTT
CITY, VILLAGE, TOWN

CORNER INDENTITY: SURVEY NAIL

LINCOLN COUNTY COORDINATE: N: 103075.39
E: 391314.46

DATE OF SURVEY: November 14, 2007
SURVEY PARTY: Dahlvig/Nieds

FOUND
SET
RE-SET
RE-TIED



Description of monument found at this corner and if was accepted, state all evidence (material, testimonial, occupational, plats, records, other monuments) used as a basis for accepting. If not accepted or if nothing was found, state evidence used as basis for establishing location. If reestablished through lost corner proportionate methods, indicate all monuments, distances and directions used to establish.

BASIS FOR MONUMENT LOCATION:

(DESCRIBE METHOD OF SURVEY AND CORNER AUTHENTICATION)

Set Survey Nail based on location surveyed for previous Certified Survey Map #1165, prepared by Central Wisconsin Engineers, recorded in Vol. 5 Pg. 348 in the Lincoln County Register of Deeds Office.



CWE, Inc.

5707 SCHOFIELD AVE.
WESTON, WISCONSIN
54476

PHONE: (715) 359-9400
FAX: (715) 355-4199

general@cwengineers.com
www.cwengineers.com

RECEIVED BY LINCOLN COUNTY
SURVEYOR THIS 26TH DAY
OF November 20, 07
Tony Dahl
COUNTY SURVEYOR

CERTIFIED CORRECT:

[Signature]

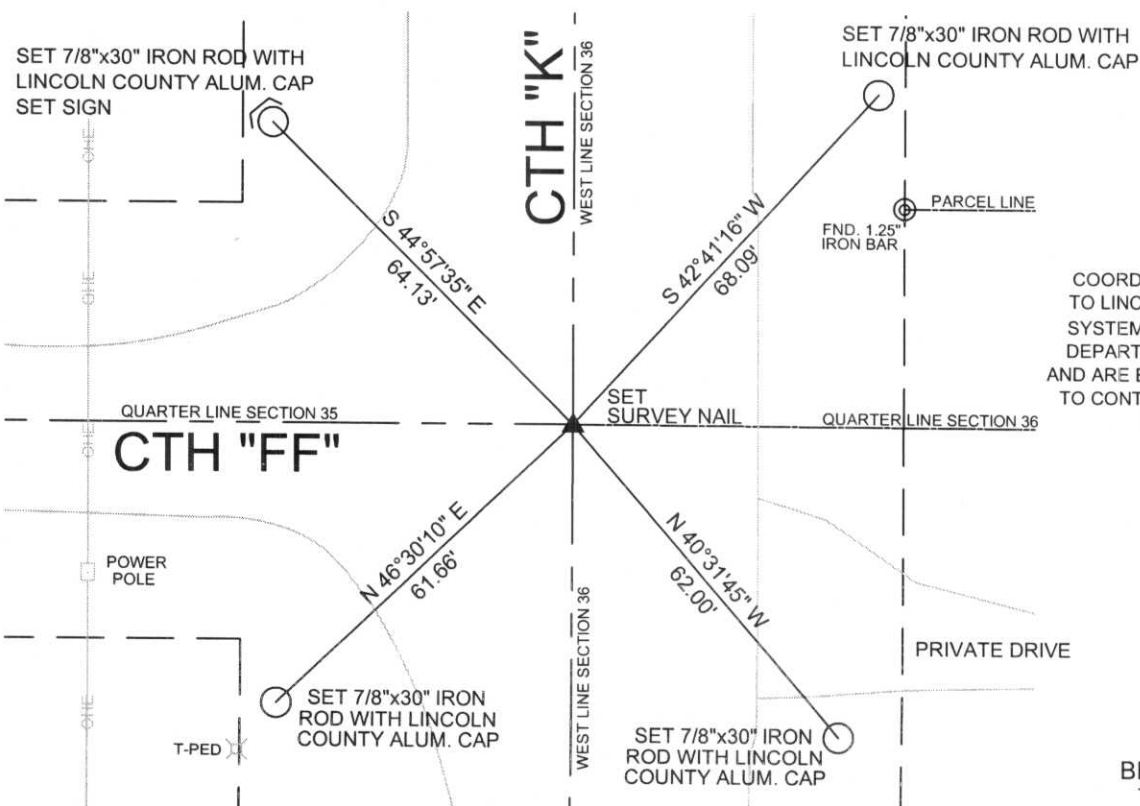
Ronald Jacobson RLS 2059-008

Registered Land Surveyor

DATE: November 26, 2007

TIE SKETCH:

SHOW MINIMUM OF FOUR (4) HORIZONTAL TIE DISTANCES TO FIXED WITNESS MONUMENTS.
DESCRIBE ALL MONUMENTS FOUND OR SET. ALL DISTANCES SHOWN IN US SURVEY FEET.



COORDINATES ARE REFERENCED TO LINCOLN COUNTY COORDINATE SYSTEM AS DEVELOPED BY THE WI. DEPARTMENT OF TRANSPORTATION AND ARE BASED ON GPS OBSERVATIONS TO CONTROL POINTS AS SUPPLIED BY LINCOLN COUNTY.

NOT TO SCALE
BEARINGS REFERENCED TO LINCOLN COUNTY COORDINATE SYSTEM